

SKID SPECIFICATIONS	
SERVICE:	SWEET
FITTINGS:	SA-105-N, SA-234-WPB
PIPE:	SA-106-B
BOLTING:	SA-193-B7, SA-194-2H
GASKETS:	1/8" 304SS SPIRAL WOUND FLEXITALIC
CORROSION ALLOWANCE:	1/16"
TUBING, FITTINGS, FERRELS:	CS

N6	3" NPT	GLYCOL WASTE TANK			
N5	3" NPT	ENGINE WASTE OIL TANK			
N4	1" NPT	INLET SCRUBBER DRAIN			
N3	2" NPT	FUEL/START GAS INLET			
N2	4"-300# RF	UNIT DISCHARGE	N8	2" NPT	STARTER EXHAUST OUTLET
N1	6"-300# RF	UNIT SUCTION	N7	1" NPT	LUBE OIL DRAIN
Nozzle	Size	Nozzle Description	Nozzle	Size	Nozzle Description

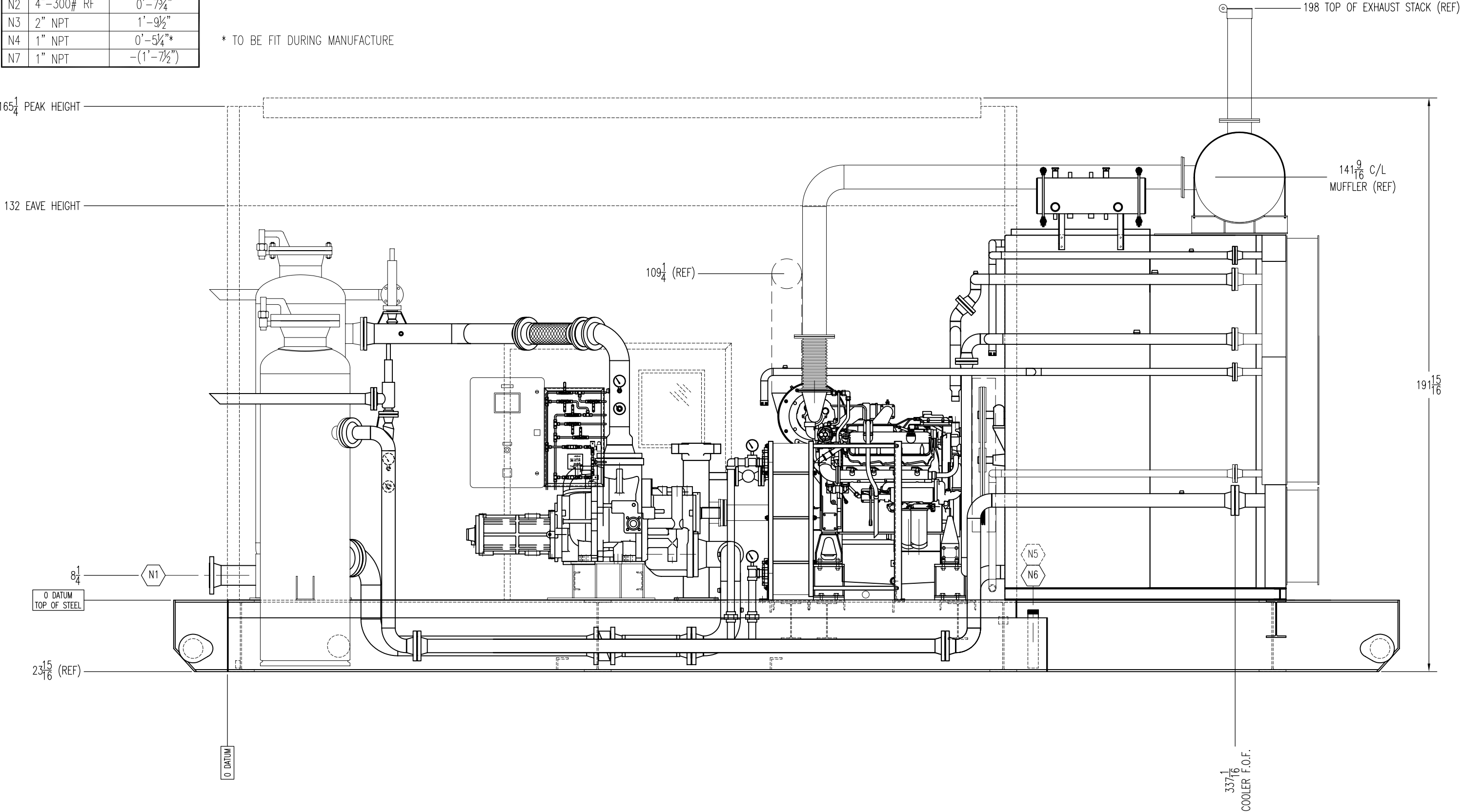


5218-68 Avenue, Edmonton, AB T6B 2X7
Phone: (780) 463-7001 Fax: (780) 463-7661
The information contained herein is confidential property of L.O.P. Inc. and is not for publication. The information is issued on the understanding that no part thereof shall be copied or communicated to a third party without authorization in writing from L.O.P. Inc.

1	01/20/05	As Built	EYR	EYR	RMW	PROJECT: 425 HP / KOBELCO KS28M ROTARY SCREW COMPRESSOR GENERAL ARRANGEMENT
0	07/30/04	ISSUED FOR CONSRUCTION	GDB	EYR	RMW	CUSTOMER: LOP STOCK
REV	DATE	DESCRIPTION	BY	CHK	APP	DATE: JUNE 28, 2004 SCALE: 3/8"=1'-0"
						DRAWN BY: GDB CHECKED BY: EYR APPROVED BY: RMW DRAWING NUMBER: i1458-01A REVISION: 1

		C/L ELEV.
N1	6"-300# RF	0'-8 $\frac{1}{4}$ "
N2	4"-300# RF	0'-7 $\frac{3}{4}$ "
N3	2" NPT	1'-9 $\frac{1}{2}$ "
N4	1" NPT	0'-5 $\frac{1}{4}$ "*
N7	1" NPT	-(1'-7 $\frac{1}{2}$ ")

* TO BE FIT DURING MANUFACTURE



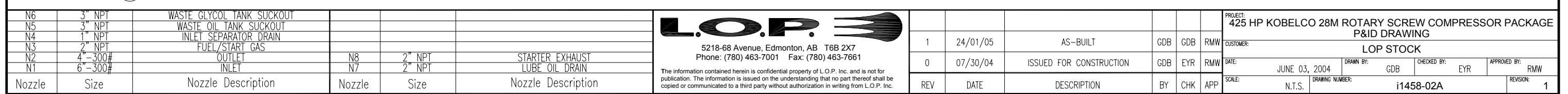
N6	3" NPT	GLYCOL WASTE TANK			
N5	3" NPT	ENGINE WASTE OIL TANK			
N4	1" NPT	INLET SCRUBBER DRAIN			
N3	2" NPT	FUEL/START GAS INLET			
N2	4"-300# RF	UNIT DISCHARGE	N8	2" NPT	STARTER EXHAUST OUTLET
N1	6"-300# RF	UNIT SUCTION	N7	1" NPT	LUBE OIL DRAIN
Nozzle	Size	Nozzle Description	Nozzle	Size	Nozzle Description

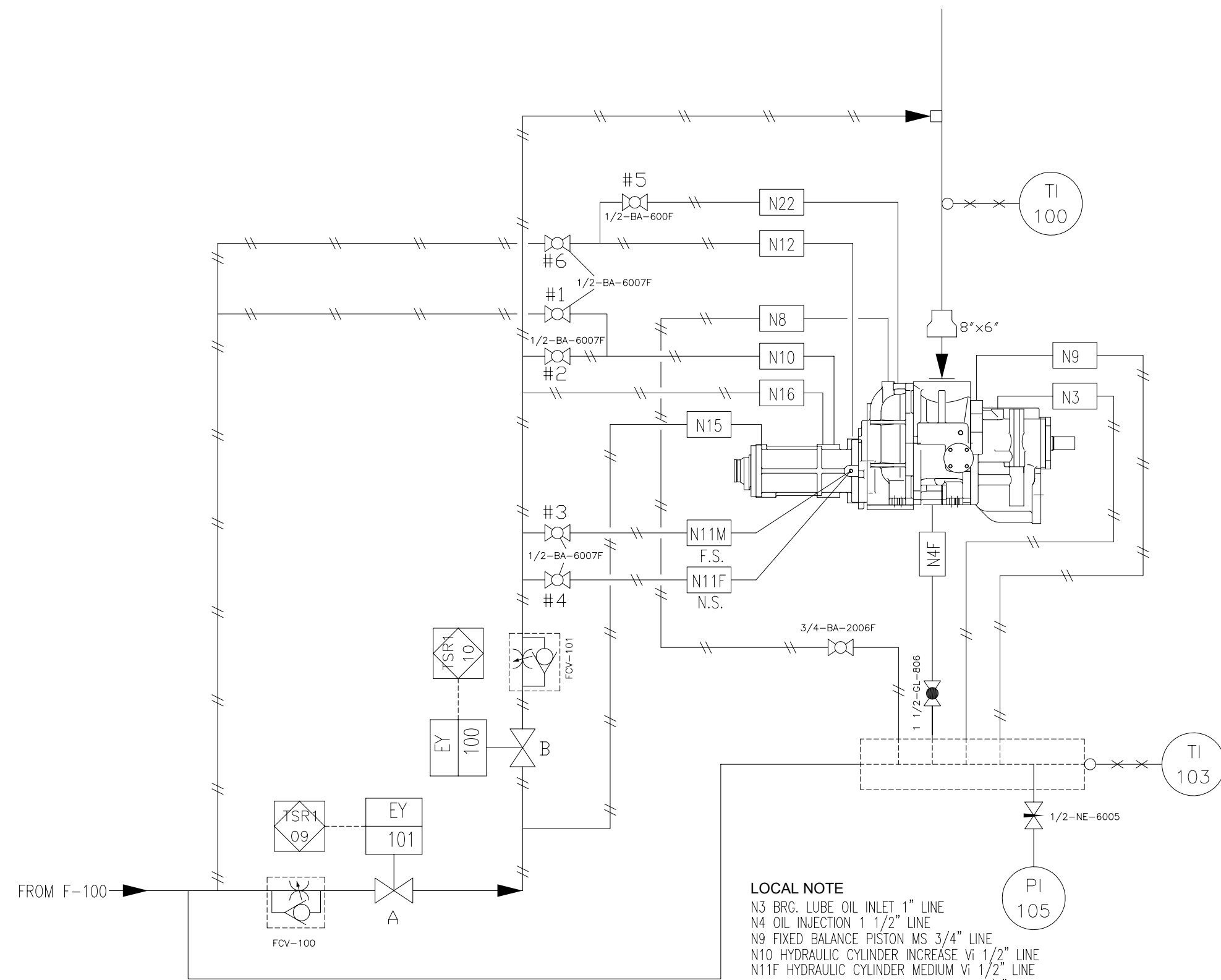
L.O.P.

5218-68 Avenue, Edmonton, AB T6B 2X7
Phone: (780) 463-7001 Fax: (780) 463-7661

The information contained herein is confidential property of L.O.P. Inc. and is not for publication. The information is issued on the understanding that no part thereof shall be copied or communicated to a third party without authorization in writing from L.O.P. Inc.

1	01/20/05	As Built	EYR	EYR	RMW	PROJECT: 425 HP / KOBELCO KS28M ROTARY SCREW COMPRESSOR GENERAL ARRANGEMENT				
0	07/30/04	ISSUED FOR CONSRUCTION	GDB	EYR	RMW	CUSTOMER: LOP STOCK				
REV	DATE	DESCRIPTION	BY	CHK	APP	DATE: JUNE 28, 2004	DRAWN BY: GDB	CHECKED BY: EYR	APPROVED BY: RMW	
						SCALE: 3/8"=1'-0"	DRAWING NUMBER: i1458-01B	REVISION: 1		





LEGEND

✕-✕-○ THERMOWELL

—//— INDICATES TUBING

○ LOCAL INDICATION

○ SIGNAL TO PANEL

○ INDICATION AND SIGNAL IN PANEL

N6	3" NPT	WASTE OIL TANK SUCKOUT			
N5	3" NPT	WASTE OIL TANK SUCKOUT			
N4	1" NPT	INLET SEPARATOR DRAIN			
N3	2" NPT	FUEL/START GAS			
N2	4"-300#	OUTLET	N8	2" NPT	STARTER EXHAUST
N1	6"-300#	INLET	N7	2" NPT	LUBE OIL DRAIN
Nozzle	Size	Nozzle Description	Nozzle	Size	Nozzle Description

L.O.P.

5218-68 Avenue, Edmonton, AB T6B 2X7
Phone: (780) 463-7001 Fax: (780) 463-7661

The information contained herein is confidential property of L.O.P. Inc. and is not for publication. The information is issued on the understanding that no part thereof shall be copied or communicated to a third party without authorization in writing from L.O.P. Inc.

1	24/01/05	AS-BUILT	GDB	GDB	RMW
0	07/30/04	ISSUED FOR CONSTRUCTION	GDB	EYR	RMW
REV	DATE	DESCRIPTION	BY	CHK	APP

REQUIRED	N 22	Rc 3/4	1	SUCTION PRESSURE	
	N 21	Rc 3/4	1	DRAIN	
	N 20	Rc 3/4	1	OIL RETURN	
	N 19	Rc 1/8	1	MECH. SEAL OIL DRAIN	
	N 18	PLUGGED	1	HYDRAULIC CYLINDER DRAIN	
REQUIRED	N 17	PLUGGED	1	HYDRAULIC CYLINDER DRAIN	
REQUIRED	N 16	Rc 1/2	1	HYDRAULIC CYLINDER (L)	
REQUIRED	N 15	Rc 1/2	1	HYDRAULIC CYLINDER (U)	
	N 14	PLUGGED	1	HYDRAULIC CYLINDER DRAIN	
	N 13	PLUGGED	1	HYDRAULIC CYLINDER DRAIN	
REQUIRED	N 12	Rc 1/2	1	HYDRAULIC CYLINDER	DECREASE Vi
REQUIRED	N 11 F	Rc 1/2	1	HYDRAULIC CYLINDER	MEDIUM Vi
REQUIRED	N 11 M	Rc 1/2	1	HYDRAULIC CYLINDER	MEDIUM Vi
REQUIRED	N 10	Rc 1/2	1	HYDRAULIC CYLINDER	INCREASE Vi
REQUIRED	N 9	Rc 3/4	1	FIXED BALANCE PISTON	
	N 8	Rc 3/4	1	ADDITIONAL BALANCE PISTON	
	N 7	Rc 1 1/4	1	LIQ. INJECTION (L)	
	N 6	Rc 1 1/4	1	LIQ. INJECTION (H)	
	N 5	2 1/2" SPECIAL	1	ECONOMIZER HOLE	
REQUIRED	N 4F	Rc 1 1/4	1	OIL INJECTION	
REQUIRED	N 3	Rc 1	1	BEARING LUBE OIL SUPPLY	
REQUIRED	N 2	ANSI 300# 8"	1	GAS DISCHARGE	
REQUIRED	N 1	10" SPECIAL	1	GAS SUCTION	
	NOZZLE NO.	THREAD SIZE OR FLANGE RATING	NO. REQ'D	SERVICE	REMARKS
COMPRESSOR NOZZLE TABLE					

Vi Control Settings

2.2Vi Valves #2 & #6 are open The rest are closed

2.9Vi Valves #1 & #3 are open The rest are closed

3.65Vi Valves #1 & #4 are open The rest are closed

5.0Vi Valves #1 & #5 are open The rest are closed

Slide Valve Control Settings

Unload Valve "A" open The rest are closed

Load Valve "B" open The rest are closed

PROJECT:	425 HP KOBELCO 28M ROTARY SCREW COMPRESSOR PACKAGE
P&ID DRAWING	
CUSTOMER:	LOP STOCK
DATE:	JUNE 10, 2004
DRAWN BY:	GDB
CHECKED BY:	EYR
APPROVED BY:	RMW
SCALE:	N.T.S.
DRAWING NUMBER:	i1458-02C
REVISION:	1