

9	FROM METHANOL TANK	[3/8]" TUBING	-						
8	TO WELLHEAD (INHIBITOR)	[3/8]" TUBING	-						
7	FROM INHIBITOR TANK	[3/8]" TUBING	-						
6	FLARE HEADER	4" 400# RF	-						
5	HEATER DRAIN	2" 4000# NPT	-						
4	FUEL GAS OUTLET	1" 4000# NPT	-						
3	FUEL GAS INLET	1" 4000# NPT	-						
2	OUTLET	4" 900# RF	-						
1	INLET	4" 2500# RTJ	-						
TAG	DESCRIPTION	SIZE/RATING	PIPE SPEC.	TAG	DESCRIPTION	SIZE/RATING	PIPE SPEC.		
CUSTOMER CONNECTIONS				CUSTOMER CONNECTIONS					

GENERAL NOTES:

1. PIPING DESIGNED TO ASME CODE B31.3 - 2002 EDITION, - ADDENDA
2. INSTRUMENTATION TUBING TO BE [3/8]" DIAMETER 316SS.
3. FITTINGS TO BE 316SS SWAGelok [C/W] SS FERRULES.
4. FUTURE GLYCOL CIRCULATION PUMP.
5. 10 PIPE DIAMETERS UPSTREAM AND 5 PIPE DIAMETERS DOWNSTREAM.
6. EXIT @ EAVE HEIGHT.
7. ALTERNATE HEATER CONFIGURATION AS PER CPC DWG No. VAL-WEL-PID-0080 REV. 1.
8. FLARE HEADER BACK PRESSURE TO BE 100 kPag OR LESS
9. REGULATORS TO BE LOCKING TYPE. IN THE EVENT OF A NO-FLOW SITUATION, UPSTREAM AND DOWNSTREAM PRESSURES WILL NOT EQUALIZE.

FOR INFORMATION ONLY

D	07/15/05	JL	-	RE-ISSUED FOR FINAL APPROVAL
C	07/08/05	JN	JN	AW RE-ISSUED FOR FINAL APPROVAL (HAZOP MARK UPS)
B	06/21/05	JN	-	ISSUED FOR FINAL APPROVAL
A	06/08/05	JN	-	ISSUED FOR APPROVAL

REV	DATE	REV BY	CHK'D BY	APP'D BY	DESCRIPTION

REVISIONS

This drawing is the property of NATCO CANADA and is lent to the recipient for his/her confidential use only. In consideration of the loan of this drawing, the recipient promises and agrees that it shall not be used in any way detrimental to the interests of NATCO CANADA, that it shall be returned upon request, and that it shall not be reproduced, copied, lent or otherwise disposed of, directly or indirectly, without the written approval of NATCO CANADA.

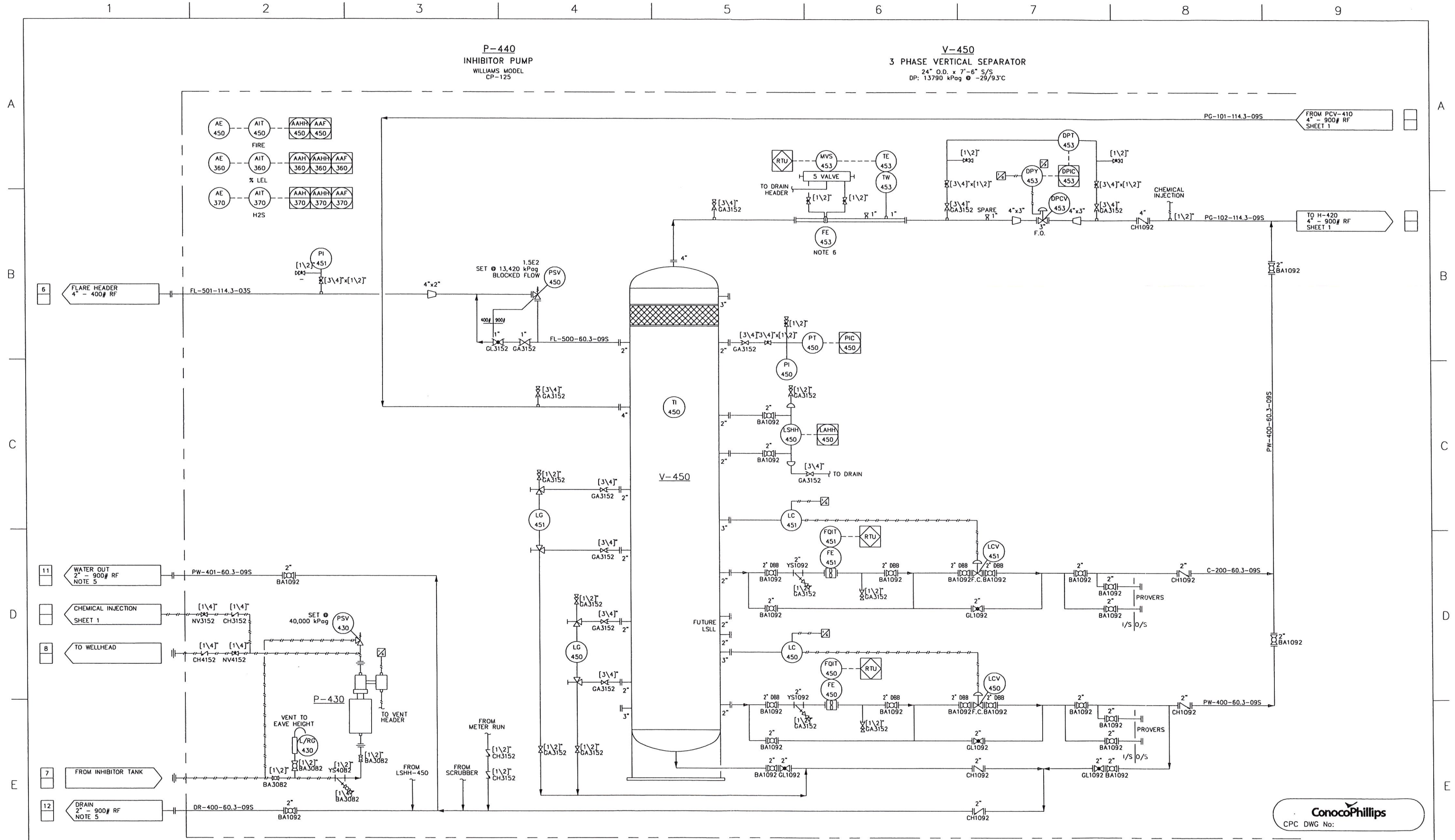
NATCO CANADA

CALGARY ALBERTA CANADA

TITLE: PROCESS & INSTRUMENTATION DIAGRAM (P&ID)
2.0 MMBTU/HR INLINE HEATER - 24" O.D. 3 PH. SEPARATOR PACKAGE B

CUSTOMER: ConocoPhillips [C\O] VECO

DESIGNER: JEREMY N.	EXTENSION: 211	DATE: 07/15/05
PROJECT MANAGER: AL W.	DRAWN BY: JAY L.	SCALE: NONE
CUST. REF. NO.	CONTRACT NO. B340	UNITS REQ. DRAWING NUMBER 1
		PROG. CODE: D-8340-01
		SHT. 1 OF 2
		REV D



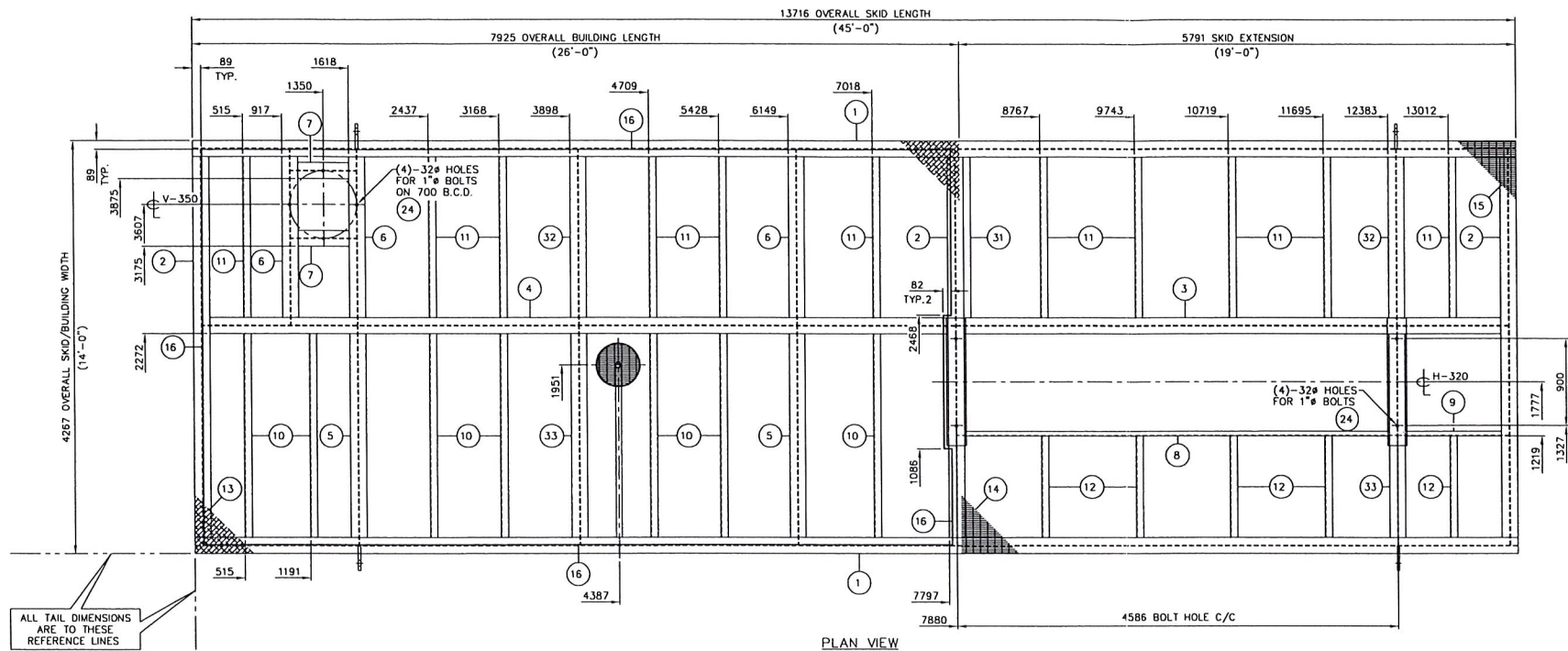
9	FROM METHANOL TANK	[3/8]" TUBING	-						
8	TO WELLHEAD (INHIBITOR)	[3/8]" TUBING	-						
7	FROM INHIBITOR TANK	[3/8]" TUBING	-						
6	FLARE HEADER	4" 400# RF	-						
5	HEATER DRAIN	2" 4000# NPT	-						
4	FUEL GAS OUTLET	1" 4000# NPT	-						
3	FUEL GAS INLET	1" 4000# NPT	-	12	DRAIN	2" 900# RF	-		
2	OUTLET	4" 900# RF	-	11	WATER OUT	2" 900# RF	-		
1	INLET	4" 2500# RTJ	-	10	TO WELLHEAD (METHANOL)	[3/8]" TUBING	-		
TAG	DESCRIPTION	SIZE/RATING	PIPE SPEC.	TAG	DESCRIPTION	SIZE/RATING	PIPE SPEC.		
CUSTOMER CONNECTIONS				CUSTOMER CONNECTIONS					

GENERAL NOTES:

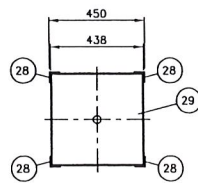
1. PIPING DESIGNED TO ASME CODE B31.3 - 2002 EDITION, - ADDENDA
2. INSTRUMENTATION TUBING TO BE [3/8]" DIAMETER 316SS.
3. FITTINGS TO BE 316SS SWAGelok [C\W] SS FERRULES.
4. FUTURE GLYCOL CIRCULATION PUMP.
5. 10 PIPE DIAMETERS UPSTREAM AND 5 PIPE DIAMETERS DOWNSTREAM.
6. EXIT @ EAVE HEIGHT.
7. SENSING LINES TO MVS-453 TO BE 1/2" 0.049" WT 316SS.

FOR INFORMATION ONLY

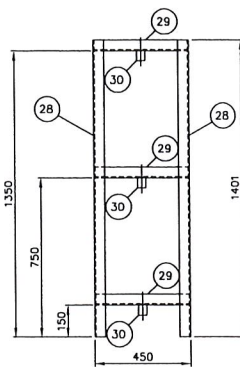
D				07/15/05	JL	-	-	RE-ISSUED FOR FINAL APPROVAL
C				07/08/05	JN	JN	AW	RE-ISSUED FOR FINAL APPROVAL (HAZOP MARK UPS)
B				06/21/05	JN	-	-	ISSUED FOR FINAL APPROVAL
A				06/08/05	JN	-	-	ISSUED FOR APPROVAL
REV	DATE	REV	BY	CHKD	BY	APPRD	BY	DESCRIPTION
REVISIONS								
This drawing is the property of NATCO CANADA and is lent to the recipient for his/her confidential use only. In consideration of the loan of this drawing, the recipient promises and agrees that it shall not be used in any way detrimental to the interests of NATCO CANADA, that it shall be returned upon request, and that it shall not be reproduced, copied, lent or otherwise disposed of, directly or indirectly, without the written approval of NATCO CANADA.								
NATCO CANADA				CALGARY ALBERTA CANADA				
15-21 (9-29M)-52-01-W6M				FIELD: SOLOMON				
8340				CONTRACT NO.				
1				UNITS REQ. DRAWING NUMBER				
D-8340-01				SHT. 2 OF 2				
D				REV				



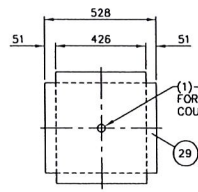
ALL TAIL DIMENSIONS
ARE TO THESE
REFERENCE LINES



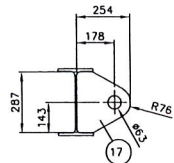
PLAN VIEW



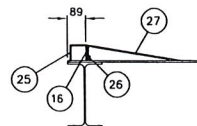
PUMP STAND DETAIL
ELEVATION VIEW
SCALE 1:15
1 REQUIRED



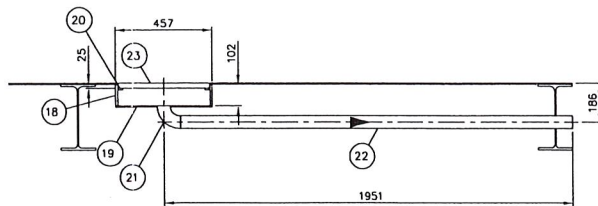
ITEM #29 DETAIL
SCALE 1:15
3 REQUIRED



LIFT LUG DETAIL
SCALE 1:15
4 REQUIRED



TYP. DOOR/DRIP LIP DETAIL
SCALE 1:15
2 SINGLE DOORWAYS REQUIRED



FLOOR DRAIN DETAIL
SCALE 1:15

FULL SIZE CONNECTION	FULL SIZE CONNECTION	FULL SIZE CONNECTION	REDUCED CONNECTION	FLOOR SUPPORT FULL COPE	FLOOR SUPPORT NO COPE	FLOOR PLATE TO SKID CONNECTION	FLOOR PLATE SEAMS	TYPICAL BOLTING	
1	2	3	4	5	6	7	8	9	10
W12 x W12	-	-	W12 x C6	-	W12 x L3 C6 x L3	-	-	-	-

MATERIAL LIST

ITEM	QTY	PART/COMP. No.	DESCRIPTION	MATERIAL
001	2	22511527	WIDE FLANGE 12" x 35#	G402150W
002	3	22511527	WIDE FLANGE 12" x 35#	G402150W
003	1	22511527	WIDE FLANGE 12" x 35#	G402150W
004	1	22511527	WIDE FLANGE 12" x 35#	G402150W
005	2	22511517	WIDE FLANGE 12" x 26#	G402150W
006	3	22511517	WIDE FLANGE 12" x 26#	G402150W
007	2	22511517	WIDE FLANGE 12" x 26#	G402150W
008	1	22111627	CHANNEL 6.00" x 8.2#	G402144W
009	1	22111627	CHANNEL 6.00" x 8.2#	G402144W
010	7	22011783	ANGLE 3.00" x 2.00" x 0.250"	SA36/44W
011	11	22011783	ANGLE 3.00" x 2.00" x 0.250"	SA36/44W
012	5	22011783	ANGLE 3.00" x 2.00" x 0.250"	SA36/44W
013	1	16002501	PLATE 0.250" THICK	SA36/44W
014	1	29555374	GRATING TYPE 19-4 1"x3/16"	CARBON STEEL
015	1	29555374	GRATING TYPE 19-4 1"x3/16"	CARBON STEEL
016	1	10514620	BAR FLAT 3.000" x 0.250"	SA36/44W
017	4	16112500	PLATE 1.250" THICK NORMALIZED	SA51670N
018	1	13603716	PIPE ERW 18" (W 0.375")	SA53B
019	1	16002501	PLATE 0.250" THICK	SA36/44W
020	1	16002501	PLATE 0.250" THICK	SA36/44W
021	1	30002409	ELL. WELD 2" STD LR 90	SA234WPB
022	1	13021019	PIPE 2" STD SMLS T.O.E.	SA106B
023	1	29555374	GRATING TYPE 19-4 1"x3/16"	CARBON STEEL
024	8	65209414	BOLT HEX 1.0" x 3/16" LG w/ NUT & WASHER	SA325
025	2	22011967	ANGLE 3.00" x 3.00" x 0.250"	SA36/44W
026	2	10512420	BAR FLAT 1" x 0.250"	SA36/44W
027	2	20025100	CHECKERED PLATE 0.250" THICK	MILD STEEL
028	4	22011527	ANGLE 2.00" x 2.00" x 0.250"	SA36/44W
029	3	16002501	PLATE 0.250" THICK	SA36/44W
030	3	50703017	CPLG 0.5" 3000# FS HALF 0.9375"	SA105N
031	1	10514620	BAR FLAT 3" x 0.250"	SA36/44W
032	2	22511527	WIDE FLANGE 12" x 35#	G402150W
033	2	22511527	WIDE FLANGE 12" x 35#	G402150W

- ALL FILLET WELDS TO BE 1/4" UNLESS OTHERWISE NOTED.
- ALL MEMBERS ARE TO BE FLUSH WITH THE TOP OF SKID., UNLESS OTHERWISE NOTED.
- SEE PAINTING SCHEDULE 8339-90.
- SEE INSULATION SCHEDULE 8339-92.
- INSULATE UNDERSIDE OF SKID UNDER BUILDING ONLY WITH 3" FIRE RETARDANT SPRAY ON FOAM INSULATION.

ConocoPhillips
CPC DWG No:

SKID WEIGHT

WEIGHT OF STEEL (LBS/Kg)	13,449 LBS / 6113 Kg
WEIGHT OF BUILDING (LBS/Kg)	5335 LBS / 2425 Kg
TOTAL WEIGHT (LBS/Kg)	18,784 LBS / 8538 Kg

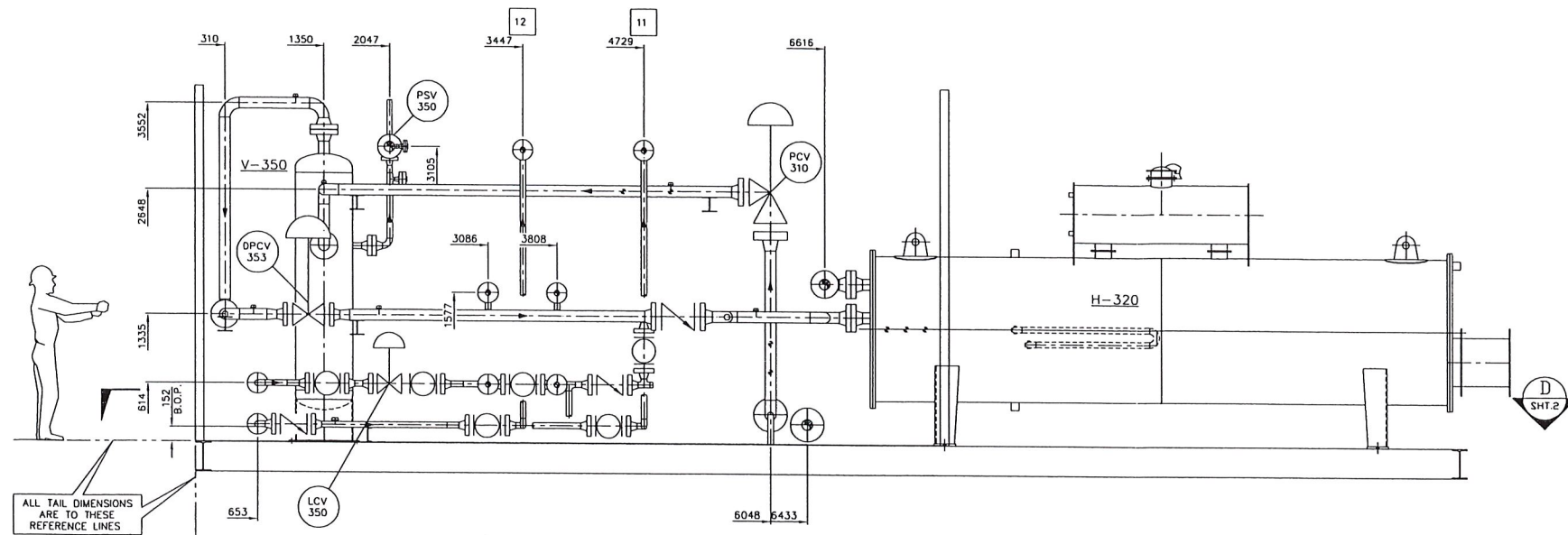
0	06/30/05	JN		ISSUED FOR FABRICATION
A	06/15/05	JN		ISSUED FOR APPROVAL

REVISIONS

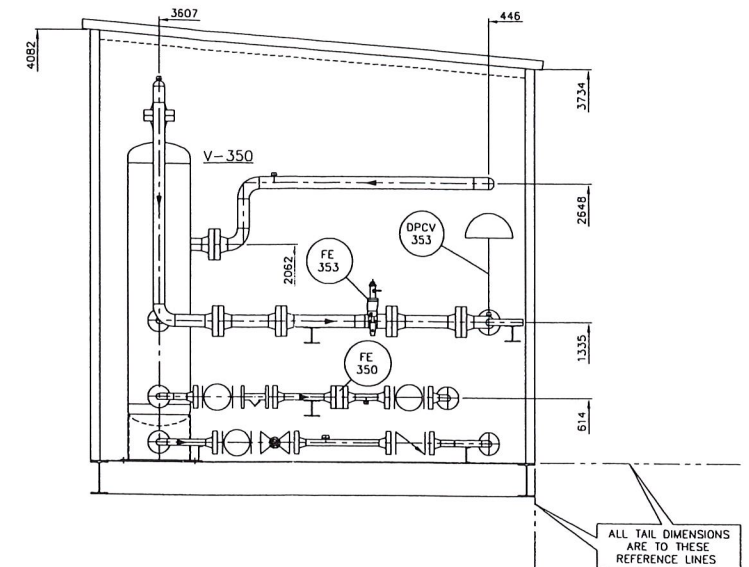
This drawing is the property of NATCO CANADA and is lent to the recipient for his confidential use only. In consideration of the loan of this drawing, the recipient promises and agrees that it shall not be used in any way detrimental to the interests of NATCO CANADA, that it shall be returned upon request, and that it shall not be reproduced, copied, lent or otherwise disposed of directly or indirectly, without the written approval of NATCO CANADA.

NATCO CANADA

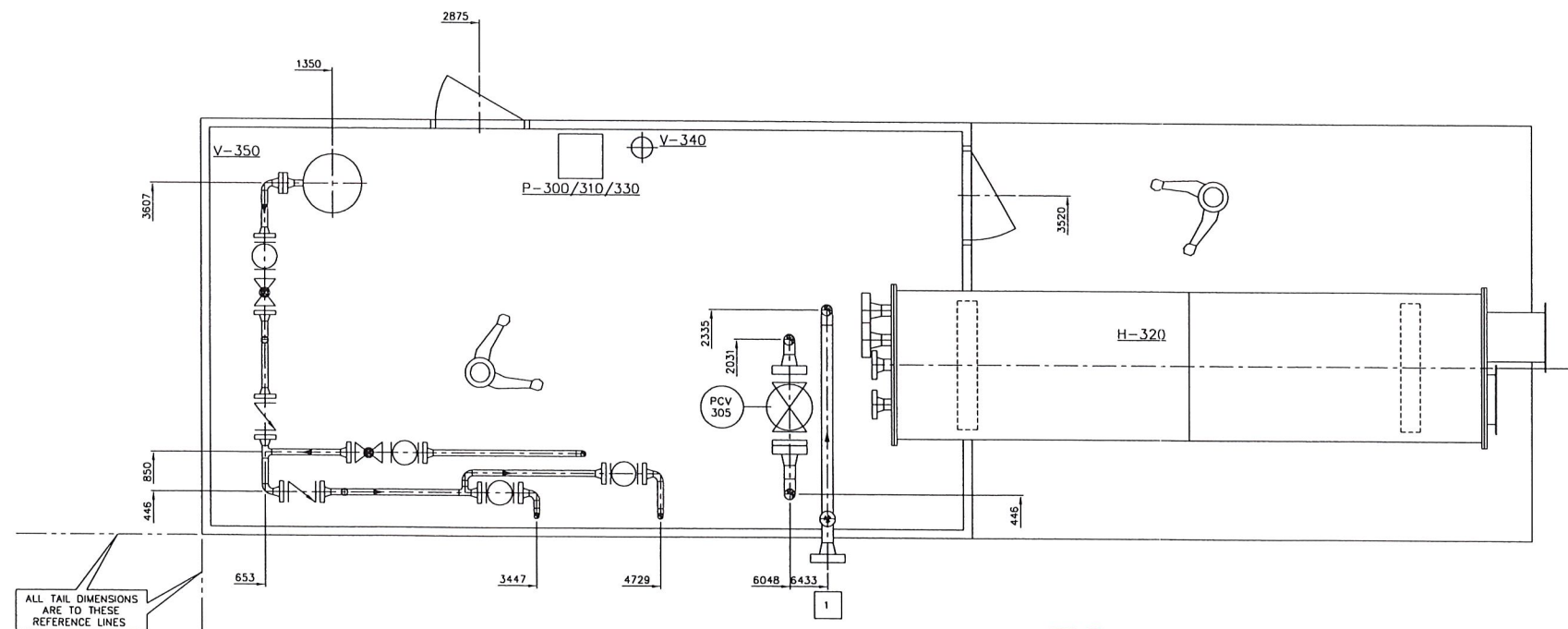
CALGARY	ALBERTA	CANADA
TITLE 4267mm (14'-0") x 13,716mm (45'-0") STRUCTURAL SKID		
CUSTOMER 2.0 MMBTU/HR LINE HEATER - 24" O.D. x 7'-6" S/S SEPARATOR PACKAGE		
CONTRACTOR ConocoPhillips c/o VECO CANADA		
LOCATION FIELD: SOLOMON	PROJECT ENGINEER JEREMY N. BROWN	DATE 06/08/2005
UNITS REC 1	DRAWN BY JEREMY N. BROWN	SCALE 1:30
CONTRACT NO. 8339	PROJ. CODE D-8339-04	REV 1 OF 2



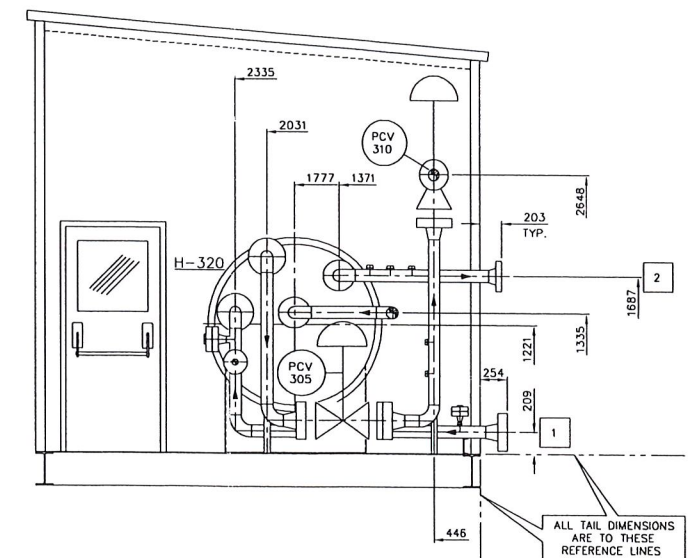
SECTION 'C'



SECTION 'A'



SECTION 'D'



SECTION 'B'

FOR INFORMATION ONLY

ConocoPhillips
CPC DWG No:

9	FROM METHANOL TANK	-	-	-	-
8	TO WELLHEAD	-	-	-	-
7	FROM INHIBITOR TANK	-	-	-	-
6	FLARE HEADER	4" - 300# RF	-	-	-
5	HEATER DRAIN	1" - 3000# NPT	-	-	-
4	FUEL GAS OUT	1" - 3000# NPT	-	-	-
3	FUEL GAS INLET	1" - 3000# NPT	12	DRAIN	2" - 900# RF
2	GAS OUT	4" - 900# RF	11	WATER OUT	2" - 900# RF
1	INLET	4" - 2500# RTJ	10	METHANOL TO WELLHEAD	-
TAG	DESCRIPTION	SIZE-RATING	TAG	DESCRIPTION	SIZE-RATING

GENERAL NOTES:

1. PIPING DESIGNED TO ASME CODE B31.3 2002 EDITION, - ADDENDA.
2. UNLESS OTHERWISE INDICATED, SHOP SHALL LOCATE ALL CUSTOMER CONNECTIONS NOT SHOWN ON DRAWING.
3. ALL SKID EDGE DIMENSIONS SHALL HAVE A TOLERANCE OF $\pm [1/4"]$ OF THE INDICATED DIMENSIONS.
4. WELD GAP = 2 mm. SHOP TO ADJUST AS REQUIRED.
5. THREADED PIPING TO BE SHOP RUN.
6. ALL CUSTOMER CONNECTIONS TO BE ON COMMON WALL.

TOTAL PACKAGE WEIGHT (LBS/Kg):		60,950 LBS. 27,705 Kg	
TOTAL SHIPPING WEIGHT (LBS/Kg):		60,950 LBS. 27,705 Kg	
OVERALL	45'-5[1/2] / 13,856	15'-0" / 4572	14'-6" / 4420
SHIPPING	-	-	-
DESCRIPTION	LENGTH (FT-IN/MM)	WIDTH (FT-IN/MM)	HEIGHT (FT-IN/MM)
OVERALL PACKAGE DIMENSIONS/WEIGHTS			

REV	DATE	REV	DATE	REV	DATE
B	05/08/05	JN	-	-	-
A	05/31/05	JN	-	-	-

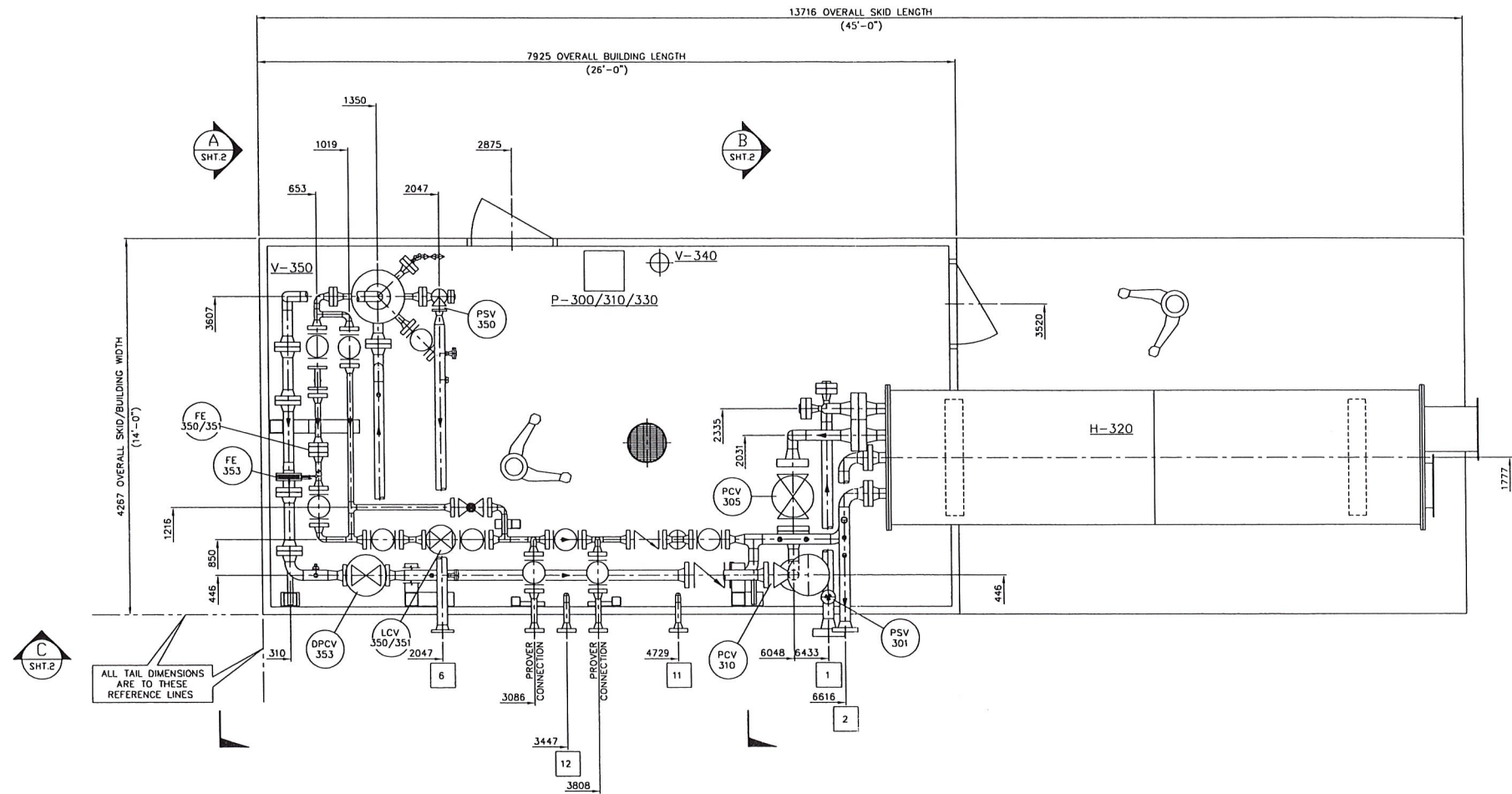
ISSUED FOR APPROVAL
ISSUED FOR EQUIPMENT LAYOUT

REVISIONS

This drawing is the property of NATCO CANADA and is lent to the recipient for his confidential use only. In consideration of the loan of this drawing, the recipient promises and agrees that it shall not be used in any way detrimental to the interests of NATCO CANADA, that it shall be returned upon request, and that it shall not be reproduced, copied, lent or otherwise disposed of, directly or indirectly, without the written approval of NATCO CANADA.

NATCO CANADA

CALGARY	ALBERTA	CANADA
TITLE	PIPING & EQUIPMENT GENERAL ARRANGEMENT	
CUSTOMER	2.0 MMBTU/HR LINE HEATER - 24" O.D. x 7'-6" S/S SEPARATOR PACKAGE	
CONTRACT NO.	ConocoPhillips c/o VECO CANADA	
LOCATION	FIELD: SOLOMON	
DESIGNER	JEREMY N.	DATE: 05/30/2005
DRAWN BY	AL W.	SCALE: 1 : 30
CUST. REF. NO.	CONTRACT NO.	8339
UNITS REQ.	DRAWING NUMBER	1
PROJ. CODE	D-8339-02	REV B
	SHT. 2 OF 2	



PLAN VIEW

FOR INFORMATION ONLY



CPC DWG No:

9	FROM METHANOL TANK	-	-	-	-
8	TO WELLHEAD	-	-	-	-
7	FROM INHIBITOR TANK	-	-	-	-
6	FLARE HEADER	4" - 300# RF	-	-	-
5	HEATER DRAIN	1" - 3000# NPT	-	-	-
4	FUEL GAS OUT	1" - 3000# NPT	-	-	-
3	FUEL GAS INLET	1" - 3000# NPT	12	DRAIN	2" - 900# RF
2	GAS OUT	4" - 900# RF	11	WATER OUT	2" - 900# RF
1	INLET	4" - 2500# RTJ	10	METHANOL TO WELLHEAD	-
TAG	DESCRIPTION	SIZE-RATING	TAG	DESCRIPTION	SIZE-RATING

GENERAL NOTES:

1. PIPING DESIGNED TO ASME CODE B31.3 2002 EDITION, - ADDENDA.
2. UNLESS OTHERWISE INDICATED, SHOP SHALL LOCATE ALL CUSTOMER CONNECTIONS NOT SHOWN ON DRAWING.
3. ALL SKID EDGE DIMENSIONS SHALL HAVE A TOLERANCE OF $\pm 1/4"$ OF THE INDICATED DIMENSIONS.
4. WELD GAP = 2 mm. SHOP TO ADJUST AS REQUIRED.
5. THREADED PIPING TO BE SHOP RUN.
6. ALL CUSTOMER CONNECTIONS TO BE ON COMMON WALL.

TOTAL PACKAGE WEIGHT (LBS/Kg):	60,950 LBS.	27,705 Kg
TOTAL SHIPPING WEIGHT (LBS/Kg):	60,950 LBS	27,705 Kg
OVERALL	45'-5 1/2" / 13.856	15'-0" / 4.572
SHIPPING	-	-
DESCRIPTION	LENGTH (FT-IN/MM)	WIDTH (FT-IN/MM)
		HEIGHT (FT-IN/MM)

This drawing is the property of NATCO CANADA and is lent to the recipient for his confidential use only. In consideration of the loan of this drawing, the recipient promises and agrees that it shall not be used in any way detrimental to the interests of NATCO CANADA, that it shall be returned upon request, and that it shall not be reproduced, copied, lent or otherwise disposed of, directly or indirectly, without the written approval of NATCO CANADA.

NATCO CANADA		
CALGARY	ALBERTA	CANADA
TITLE: PIPING & EQUIPMENT GENERAL ARRANGEMENT		
2.0 MMBTU/HR LINE HEATER - 24" O.D. x 7'-6" S/S SEPARATOR PACKAGE		
CUSTOMER: ConocoPhillips c/o VECO CANADA		
LOCATION: FIELD: SOLOMON	PROJECT: JEREMY N.	DATE: 05/30/2005
CUST. R/F. NO.	CONTRACT NO. 8339	UNITS: 1
		DRAWING NUMBER: D-8339-02
		PREP. CODE: SHT. 1 OF 2
		REV: B