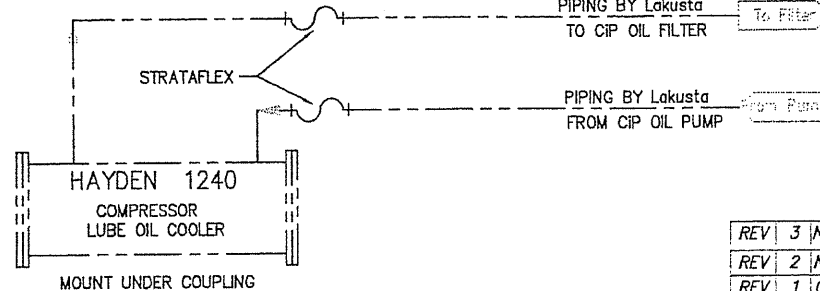


CUSTOMER SUPPLIED
RELIEF, SET @ 350#
REQUIRED FOR SUCTION

CUSTOMER TO SUPPLY
SUCTION CONTROL VALVE
CONTROLLER MTD I/S BLDG
BY LAKUSTA

PROJECT NAME: *Harmattan*
DATE: *Nov 27/06* *RB/RS*
PROJECT #: *65037* *Prospec*

1" N.P.T. 1" CPLG
PACKING VENT/DRAIN & OIL DRAIN
CUSTOMER CONNECTION TO VENTED STORAGE TANK



VENDOR TO PROCEED AS NOTED
☒ APPROVED FOR CONSTRUCTION.
☐ APPROVED FOR CONST. AS NOTED
☐ REVISE AND RESUBMIT AS NOTED

SIGNED: *[Signature]*
 DATE: *Nov 29, 2006*

REV	3	NOV 24/06 PER CUSTOMER REQUESTS
REV	2	NOV 17/06 PER CUSTOMER REQUESTS
REV	1	OCT 18/06 PER CUSTOMER REQUESTS
REV	0	10-12-06 RELEASED FOR PRODUCTION

UNLESS OTHERWISE NOTED DIMENSIONS
ARE IN INCHES AND TOLERANCES:

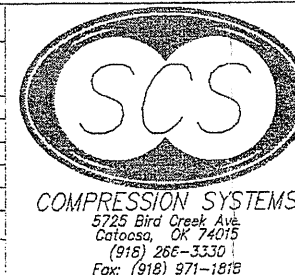
DEC. DIM.	DEC. DIM.	ANGLE	FIN. DIM.	FIN. DIM.
± .010	± .005	± 1°	± .005	± .005

ALL MACHINED PARTS TO BE .0008
BREAK SHARP EDGES FOR OR CHAMFER

SIGNATURE	DATE
DRAWN BY: SH	10-2-06
CHK BY:	
APPD BY:	
CUST. APPR:	

DO NOT SCALE PRINT

THIRD ANGLE
PROJECTION



10/9/2006 2:41pm Stephen Harding

NOTICE: THIS DOCUMENT CONTAINS PROPRIETARY
INFORMATION AND IT SHALL NOT BE USED OR
REPRODUCED OR CONTENTS DISCLOSED IN WHOLE
OR IN PART WITHOUT PRIOR WRITTEN CONSENT
FROM SCREW COMPRESSOR SYSTEMS INC.

ELECTRIC MOTOR W/CIP PXT-2
[6" / 4"] P&ID

JOB NO.	SIZE	DWG. NO.	REV.
2432C	D	FS-01	3

SCALE: NONE FILE NO.: 2432C-01 SHEET 1 OF 2