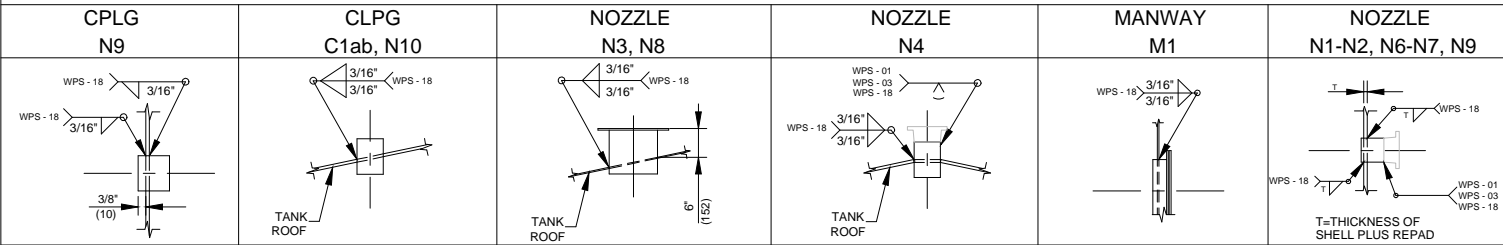


GENERAL NOTES

DESIGN						PAINTING AND INSULATION	
DESIGN CODE	API SPEC, 12F, TWELFTH EDITION, OCT 2008, 650 MOD		ADDITIONAL CODES			INTERNAL FINISH	SSPC-SP5 BLAST, DEVCHEM 253,
DESIGN PRESSURE	16oz/sq in		DESIGN VACUUM	.4oz/sq in		FULL INTERNAL COATING, HOLIDAY FREE	
RADIOGRAPHY	SPOT X-RAY AS PER 650 MOD		JOINT EFFICIENCY	NONE			
IMPACT TESTING	NONE		AIR-TEST PRESSURE	24oz	CAPACITY	750 BBL (119 CU) NOMINAL	EXTERNAL FINISH
MINIMUM DESIGN METAL TEMPERATURE	-45°C (-113F) MAX:149°C (300F)		SERVICE	SOUR	OVERALL WIDTH	15'-7 3/8" [4759]	INSULATE w/ 1 1/2" URETHANE FOAM
OVERALL HEIGHT	27'-0 1/4" TOL +/- 6" [8235]		WEIGHT	Dry: 16,000 lbs		c/w BLACK ELASTOMERIC SEALER	

APPURTENANCE & ATTACHMENT WELD DETAILS (NTS)

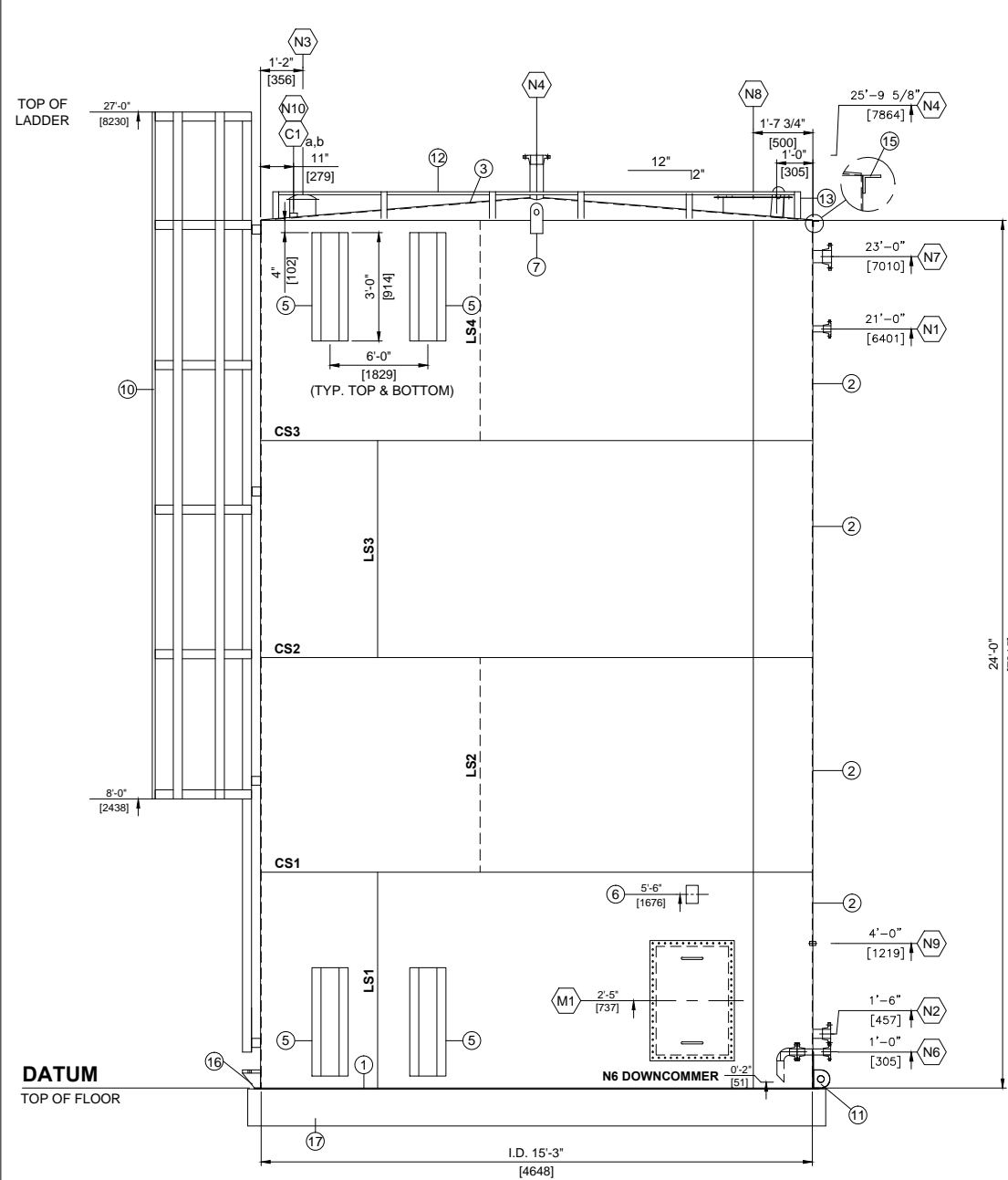


NOZZLE SCHEDULE

MK#	QTY	SIZE	SCH	RATE	TYPE	PROJECTION INT	EXT	REPAD	DESCRIPTION
N1	1	60 2"	STD	150#	RFWN	152 6"	152 6"	YES	LIQUID HYDROCARBON INLET
N2	1	89 3"	STD	150#	RFWN	152 6"	152 6"	YES	LIQUID HYDROCARBON TRUCK OUT
N3	1	219 8"	-	-	API	152 6"	152 6"	NO	THIEF HATCH (16oz/0.4oz (SOUR)) TH-6500
N4	1	114 4"	STD	150#	RFWN	152 6"	152 6"	YES	GAS BLANKET
N6	1	60 2"	STD	150#	RFWN	127 5"	152 6"	YES	DRAIN c/w DOWNCOMMER CUT AT 45°
N7	1	114 4"	STD	150#	RFWN	152 6"	152 6"	YES	LSHH-6501 c/w 4" x 2" NPT BLIND & PLUG
N8	1	508 20"	STD	API	-	127 5"	152 6"	NO	EPRV
N9	1	27 3/4"	-	3000# 316 S.S.	FULL	HALF	HALF		TW-6501/TI-6501
N10	1	60 2"	-	3000# 316 S.S.	FULL	HALF	HALF		LG/LIT-6500
C1a,b	2	42 1 1/4"	-	3000# 316 S.S.	FULL	HALF	HALF		LEVEL GUIDE
M1	1	2'x3'	-	-	12F	51 2"	2"	NO	MANWAY c/w SOLID COVER

MATERIAL LIST

MK#	QTY	DESCRIPTION	MATERIAL	WT
1	1	FLOOR PLATE - 15'-7 3/8" x 1/4" THK	SA36	-
2	4	SHELL PLATE - 6'-0" x 3/16" THK	SA36	-
3	1	CONICAL ROOF PLATE - 15'-5 1/2" x 1/4" THK	SA36	-
4	1	MANWAY 2'x3' c/w SOILD COVER	SA36	-
5	4	HAULING PADS	SA36	-
6	1	PESC NAMEPLATE c/w BRACKET	SA36	-
7	4	LIFTING LUGS	SA36	-
8	1	THIEF HATCH (16oz/0.4oz (SOUR))	-	-
9	1	GAUGE BOARD c/w HAWKEYE REDTAIL c/w GOSHAWK 1-4-20ma TRANSMITTER	-	-
10	1	STD. LADDER c/w SAFETY CAGE SEE DETAIL: LADR-DT-01	SA36	-
11	1	TAILING LUG	SA36	-
12	1	SAFETY TOE RAIL-FLATBAR 1"	SA36	-
13	16	SAFETY TOE RAIL SUPPORTS-ANGLE 2" x 2"	SA36	-
14	1	ROOF SAFETY TIE-OFF LUG	SA36	-
15	1	2" x 2" x 3/16" ANGLE RUN AROUND	SA36	-
16	5	ANCHOR CHAIRS SEE DETAIL: AC-DT-01	SA36	-
17	1	750 BASE SKID SEE DETAIL: SKD-DT-01	SA36	-
18	1	EPRV ENARDO MODEL 2020-21V-2-z15	-	-



ELEVATION  
(NOT TRUE ORIENTATION)

EPRV SIZED AS PER  
INFO PROVIDED  
BELOW FROM ZIRCO:  
574,394 SCFH

ORIENTATION  
(TRUE ORIENTATION)

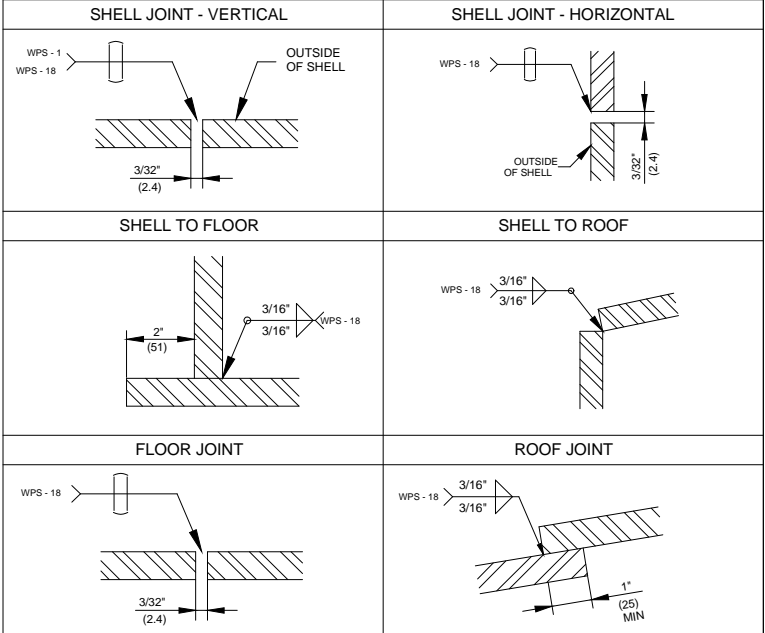
REV	DESCRIPTION	BY	CHK	APP	Y-M-D
0	ISSUED FOR CONSTRUCTION	JMR	AC	GG	14-04-14



502 Mitchell St. NE  
Box 1449  
Redcliff, Alberta  
T0J 2P0

Tank Manufacturing Facility  
Phone: (403) 548-2657  
Fax: (403) 548-2659

TANK WELD DETAILS (NTS)



The information contained in this drawing is the confidential property of Platinum Energy Services Corp. No part thereof shall be reproduced or communicated to a third party without written authorization from Platinum Energy Services Corp.

NOTES

- ALL FLANGE RATINGS TO BE ANSI B16.5 LATEST EDITION.
- FLANGE AND BOLT HOLES TO STRADDLE CENTER LINES (UNO).
- INSIDE EDGES OF NOZZLE NECKS, INSPECTION OPENINGS AND MANWAYS (IF INTERNALLY COATED) SHALL BE ROUNDED TO A RADIUS OF 1/8" MIN. OR ONE HALF THE WALL THICKNESS, IF THE PIPE WALL IS LESS THAN 1/4".
- ALL DIMENSIONS ARE IMPERIAL. DIMENSIONS IN [ ] ARE METRIC FOR REFERENCE ONLY.
- ALL NOZZLE PROJECTIONS ARE MEASURED AT NOZZLE CENTERLINE.
- ALL ROOF NOZZLES TO BE 2-HOLED TO 0°.

750 Bbl SINGLE WALL TANK  
750 Bbl (119 CuM) CONDENSATE TANK  
15'-3" (4648mm) ID x 24'-0" (7315mm) HIGH

COMPANY:  
APACHE

JOB NO:  
21575  
SCALE: NTS  
DRAWING NO:  
21575-TK-01

QTY:  
1  
REV:  
0

REF. P&ID: APA-ZAM-14-12-MFS-0040 REV. 1-C

T-650