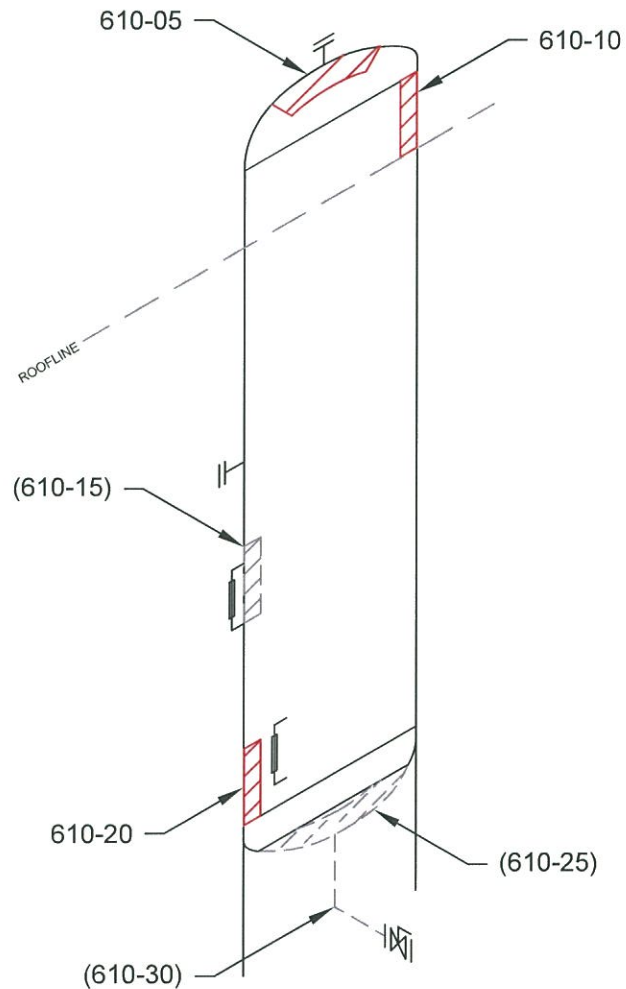


ITEM:

SEPARATOR

A3030396



COMMENTS:



STETTTLER, AB (403) 742-4868
 LACOMBE, AB (403) 782-7855
 BROOKS, AB (403) 501-8029
 GRANDE PRAIRIE, AB (866) 422-9732

TECHNICIAN:

PAUL MATTHEWS
 SNT LEVEL II
 CGSB 48.9712
 LEVEL II # 10438

DATE: 1/09/13

DWG: 610

CLIENT: TRILOGY ENERGY LP

LSD: 12-13-061-19-W5M

INSPECTOR: LUC PAQUETTE

LOCATION: CLOVER

DISTRICT UNIT: KAYBOB SOUTH

BLDG/SKID: PKG0196

PROCESS: SWEET

CODE: ASME SEC VIII DIV 1

SPECIFICATION: AS PER ASME SE 797

TECHNIQUE: UT 1-1, REV .1

METHOD: UT CONTINUOUS / A SCAN

SURFACE COND: PAINTED

SURFACE TEMP: AMBIENT

VESSEL INFORMATION

VESSEL #: A3030396

CRN #: K6792.2

SERIAL #: LS4240

MANUFACTURER: NATCO CANADA

DATE BUILT: 1994

CLIENT ID / TAG: -

M.A.W.P: 1421 PSI

M.A.W.T: 140° F

JOINT EFFICIENCY/RT: RT 1

STRESS RELIEVED: -

INSULATED: NO

MANWAY: NO

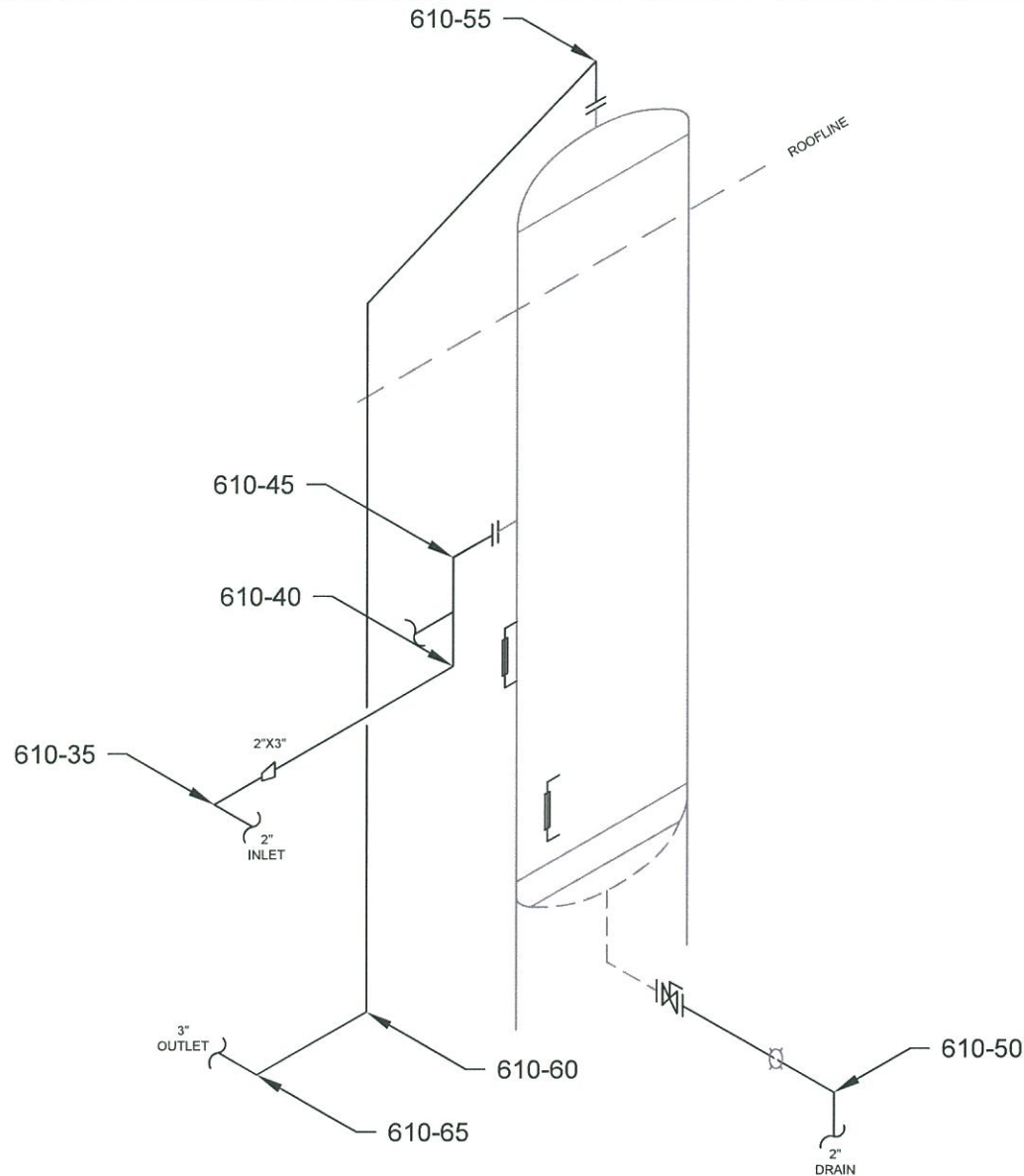
VESSEL SPECIFICATIONS

	OD	NOMINAL	MATERIAL	CA
VESSEL HEAD	30"	1.375"	SA-516-70	.063"
VESSEL SHELL	30"	1.250"	SA-516-70	.063"
BOOT HEAD	-	-	-	-
BOOT SHELL	-	-	-	-

PROJECT:

C20586

A3030396



STETTLER, AB (403) 742-4868
LACOMBE, AB (403) 782-7855
BROOKS, AB (403) 501-8029
GRANDE PRAIRIE, AB (866) 422-9732

TECHNICIAN:

PAUL MATTHEWS
SNT LEVEL II
CGSB 48.9712
LEVEL II # 10438

DATE: 1/09/13

DWG # 610A

CLIENT:**TRILOGY ENERGY LP**

LSD:

12-13-061-19-W5M

INSPECTOR :

LUC PAQUETTE

LOCATION :

CLOVER

DISTRICT UNIT :

KAYBOB SOUTH

BLDG/SKID :

PKG0196

PROCESS :

SWEET

CODE :

ASME B31.3

SPECIFICATION :

AS PER ASME SE 797

TECHNIQUE :

UT 1-1, REV .1

METHOD :

UT CONTINUOUS / A SCAN

SURFACE COND :

PAINTED

SURFACE TEMP :

AMBIENT

PIPING INFORMATION

[illegible]

COMMENTS:

PROJECT:

C20586



ULTRASONIC CORROSION SURVEY

Survey Name: TRILOGY ENERGY LP

LSD:	12-13-061-19W5	Dwg: 610	Vessel Number:	A3030396	Manufacturer:	NATCO CANADA	Survey Date:	1/09/13
District Unit:	KAYBOB SOUTH		Vessel Name:	SEPARATOR	Serial Number:	LS4240	Inspector:	LUC PAQUETTE
Location:	CLOVER		Year Built:	1994	Shell MAWP PSI:	1421	MAWT F:	140
Skid:	PKG0196		Tag Number:	-	Tube MAWP PSI:	0	MAWT F:	0
			CRN:	K6792.2	Vessel CA:	0.0630	Project #:	C20586

Band	Description			Readings						Year	Avg Inches	Min Inches	Nominal	CA	TMIN	Recommended Next Inspection	Recommended Retirement Date
				1	2	3	4	5	6								
610-05	Top	Head	Baseline	1.324	1.332	1.328	1.312	1.300	1.329	2013	1.321	1.300	1.3750	0.0630	1.1154	2014	2033
Shape	Ellipsoidal	shell Side	Previous										Comments-->				
OD	30		Current	1.324	1.332	1.328	1.312	1.300	1.329	2013	1.321	1.300					
Spec.	VIII Div 1								ST Loss MPY				Caution				
Material	SA 516 - 70								LT Loss MPY		0.000						
610-10	Upper	Shell	Baseline	1.271	1.271	1.272	1.272	1.274	1.272	2013	1.272	1.271	1.2500	0.0630	1.1737	2014	2033
Shape	Cylindrical	shell Side	Previous										Comments-->				
OD	30		Current	1.271	1.271	1.272	1.272	1.274	1.272	2013	1.272	1.271					
Spec.	VIII Div 1								ST Loss MPY				OK				
Material	SA 516 - 70								LT Loss MPY		0.000						
610-15	Mid	Shell	Baseline	1.284	1.284	1.283	1.283	1.281	1.280	2013	1.283	1.280	1.2500	0.0630	1.1737	2014	2033
Shape	Cylindrical	shell Side	Previous										Comments-->				
OD	30		Current	1.284	1.284	1.283	1.283	1.281	1.280	2013	1.283	1.280					
Spec.	VIII Div 1								ST Loss MPY				OK				
Material	SA 516 - 70								LT Loss MPY		0.000						
610-20	Lower	Shell	Baseline	1.287	1.283	1.279	1.280	1.274	1.269	2013	1.279	1.269	1.2500	0.0630	1.1737	2014	2033
Shape	Cylindrical	shell Side	Previous										Comments-->				
OD	30		Current	1.287	1.283	1.279	1.280	1.274	1.269	2013	1.279	1.269					
Spec.	VIII Div 1								ST Loss MPY				OK				
Material	SA 516 - 70								LT Loss MPY		0.000						



ULTRASONIC CORROSION SURVEY

Survey Name: TRILOGY ENERGY LP

LSD:	12-13-061-19W5	Dwg:	610	Vessel Number:	A3030396	Manufacturer:	NATCO CANADA	Survey Date:	1/09/13
District Unit:	KAYBOB SOUTH			Vessel Name:	SEPARATOR	Serial Number:	LS4240	Inspector:	LUC PAQUETTE
Location:	CLOVER			Year Built:	1994	Shell MAWP PSI:	1421	MAWT F:	140
Skid:	PKG0196			Tag Number:	-	Tube MAWP PSI:	0	MAWT F:	0
				CRN:	K6792.2	Vessel CA:	0.0630	Project #:	C20586

Band	Description			Readings						Year	Avg Inches	Min Inches	Nominal	CA	TMIN	Recommended Next Inspection	Recommended Retirement Date
				1	2	3	4	5	6								
610-25	Bottom	Head	Baseline	1.338	1.339	1.336	1.336	1.327	1.326	2013	1.334	1.326	1.3750	0.0630	1.1154	2014	2033
Shape	Ellipsoidal	shell Side	Previous										Comments-->				
OD	30		Current	1.338	1.339	1.336	1.336	1.327	1.326	2013	1.334	1.326					
Spec.	VIII Div 1												ST Loss MPY				
Material	SA 516 - 70												LT Loss MPY 0.000				
													OK				
610-30	Drain	Nozzle	Baseline	0.326	0.325	0.325	0.329	0.327	0.327	2013	0.327	0.325	0.3430	0.0630	0.0850	2014	2033
Shape	90° Elbow	shell Side	Previous										Comments-->				
OD	2.375		Current	0.326	0.325	0.325	0.329	0.327	0.327	2013	0.327	0.325					
Spec.	VIII Div 1												ST Loss MPY				
Material	SA 234 - WPB												LT Loss MPY 0.000				
													OK				
610-35		Piping	Baseline	0.200	0.194	0.197	0.191	0.191	0.191	2013	0.194	0.191	0.2180	0.0272	0.0815	2014	2033
Shape	90° Elbow	shell Side	Previous										Comments-->				
OD	2.375		Current	0.200	0.194	0.197	0.191	0.191	0.191	2013	0.194	0.191					
Spec.	B31.3												ST Loss MPY				
Material	A 234 - WPB												LT Loss MPY 0.000				
													OK				
610-40		Piping	Baseline	0.217	0.215	0.214	0.211	0.215	0.214	2013	0.214	0.211	0.2160	0.0270	0.1201	2014	2033
Shape	90° Elbow	shell Side	Previous										Comments-->				
OD	3.5		Current	0.217	0.215	0.214	0.211	0.215	0.214	2013	0.214	0.211					
Spec.	B31.3												ST Loss MPY				
Material	A 234 - WPB												LT Loss MPY 0.000				
													OK				



ULTRASONIC CORROSION SURVEY

Survey Name: TRILOGY ENERGY LP

LSD:	12-13-061-19W5	Dwg: 610	Vessel Number:	A3030396	Manufacturer:	NATCO CANADA	Survey Date:	1/09/13		
District Unit:	KAYBOB SOUTH		Vessel Name:	SEPARATOR	Serial Number:	LS4240	Inspector:	LUC PAQUETTE		
Location:	CLOVER		Year Built:	1994	Shell MAWP PSI:	1421	MAWT F:	140	Process:	SWEET
Skid:	PKG0196		Tag Number:	-	Tube MAWP PSI:	0	MAWT F:	0	Project #:	C20586
			CRN:	K6792.2	Vessel CA:	0.0630				

Band	Description			Readings						Year	Avg Inches	Min Inches	Nominal	CA	TMIN	Recommended Next Inspection	Recommended Retirement Date
				1	2	3	4	5	6								
610-45	Piping	Baseline		0.224	0.218	0.215	0.214	0.220	0.220	2013	0.219	0.214	0.2160	0.0270	0.1201	2014	2033
Shape	90° Elbow	shell Side	Previous										Comments-->				
OD	3.5		Current	0.224	0.218	0.215	0.214	0.220	0.220	2013	0.219	0.214					
Spec.	B31.3												ST Loss MPY				
Material	A 234 - WPB												LT Loss MPY 0.000				
													OK				
610-50	Piping	Baseline		0.147	0.146	0.147	0.147	0.163	0.163	2013	0.152	0.146	0.1540	0.0192	0.0815	2014	2033
Shape	90° Elbow	shell Side	Previous										Comments-->				
OD	2.375		Current	0.147	0.146	0.147	0.147	0.163	0.163	2013	0.152	0.146					
Spec.	B31.3												ST Loss MPY				
Material	A 234 - WPB												LT Loss MPY 0.000				
													OK				
610-55	Piping	Baseline		0.201	0.208	0.212	0.217	0.217	0.216	2013	0.212	0.201	0.2160	0.0270	0.1201	2014	2033
Shape	90° Elbow	shell Side	Previous										Comments-->				
OD	3.5		Current	0.201	0.208	0.212	0.217	0.217	0.216	2013	0.212	0.201					
Spec.	B31.3												ST Loss MPY				
Material	A 234 - WPB												LT Loss MPY 0.000				
													OK				
610-60	Piping	Baseline		0.210	0.212	0.212	0.208	0.210	0.209	2013	0.210	0.208	0.2160	0.0270	0.1201	2014	2033
Shape	90° Elbow	shell Side	Previous										Comments-->				
OD	3.5		Current	0.210	0.212	0.212	0.208	0.210	0.209	2013	0.210	0.208					
Spec.	B31.3												ST Loss MPY				
Material	A 234 - WPB												LT Loss MPY 0.000				
													OK				



ULTRASONIC CORROSION SURVEY

Survey Name: TRILOGY ENERGY LP

LSD:	12-13-061-19W5	Dwg: 610	Vessel Number:	A3030396	Manufacturer:	NATCO CANADA	Survey Date:	1/09/13
District Unit:	KAYBOB SOUTH		Vessel Name:	SEPARATOR	Serial Number:	LS4240	Inspector:	LUC PAQUETTE
Location:	CLOVER		Year Built:	1994	Shell MAWP PSI:	1421	MAWT F:	140
Skid:	PKG0196		Tag Number:	-	Tube MAWP PSI:	0	MAWT F:	0
			CRN:	K6792.2	Vessel CA:	0.0630	Project #:	C20586

				Readings							Year	Avg Inches	Min Inches	Nominal	CA	TMIN	Recommended Next Inspection	Recommended Retirement Date
Band	Description			1	2	3	4	5	6									
610-65		Piping	Baseline	0.231	0.230	0.230	0.230	0.239	0.234	2013	0.232	0.230	0.2160	0.0270	0.1201		2014	2033
Shape	90° Elbow	shell Side	Previous	Comments-->														
OD	3.5		Current	0.231	0.230	0.230	0.230	0.239	0.234	2013	0.232	0.230						
Spec.	B31.3	ST Loss MPY																
Material	A 234 - WPB	LT Loss MPY									0.000		OK					