

CODE & DESIGN COMPLIANCE
1. A.B. BUILDING CODE, PART 3
a. ROOF LIVE LOAD = 42 psf
b. FLOOR LIVE LOAD = 100 psf
2. CANADIAN ELECTRICAL CODE
3. NATIONAL PLUMBING CODE

LEGEND
[PSSI] PLANT SUPPLIED SITE INSTALLED
[SSSI] SITE SUPPLIED SITE INSTALLED
[OC] ON CENTER
[AFF] ABOVE FINISHED FLOOR
[BSC] BELOW STRUCTURAL CEILING
[RO] ROUGH OPENING
[TBA] TO BE ANNOUNCED

LABELS
1. ATCO MANUFACTURING LABEL
2. CSA ELECTRICAL LABEL
3. ATCO SERIAL NUMBER STENCIL
4. MBI DECAL

REV	DATE	DESCRIPTION	BY	CHK	APP
0	29AUG05	ISSUE FOR ACCEPTANCE	EM		

NOTES:

Client Acceptance Issue

AUG 29 2005

CUSTOMER ACCEPTANCE

☐ - ACCEPTANCE AS DRAWN
☐ - ACCEPTANCE EXCEPT AS NOTED

BY: _____

DATE: _____

© COPYRIGHT 2000
ALL RIGHTS RESERVED

DRAWN BY: EM
DATE: 15AUG05
SCALE: 1"=10'-0"

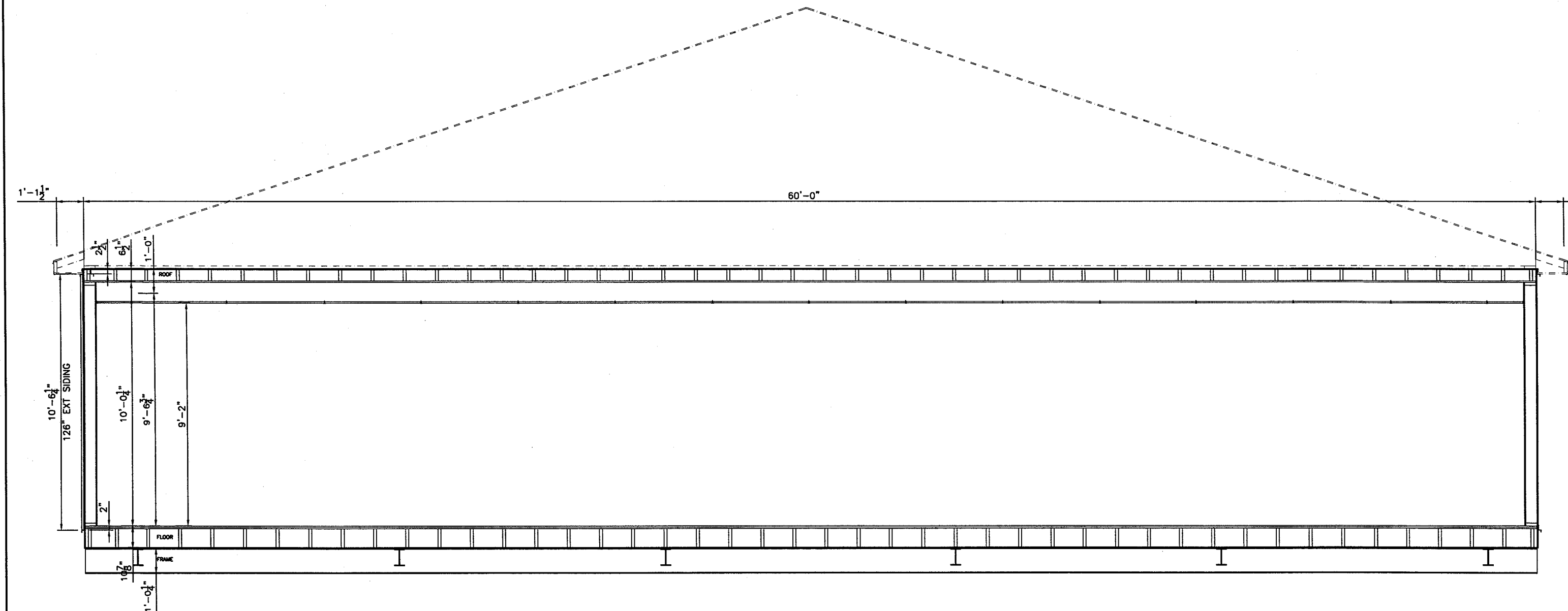
CHECKED BY: _____ DATE: _____
APPROVED BY: _____ DATE: _____

CLIENT: DEVON CANADA
54-PERSON PERMANENT CAMP
JACKFISH PROJECT

PROJECT: 11-12x60 UNIT KDR COMPLEX

INTERNAL DOCUMENT CONTROL	
PLANT REDLINES BY:	DATE:
REDLINE REC'D BY ENG BY:	DATE:
DRAWING TITLE: KITCHEN DINER REC COMPLEX FLOOR PLAN	
DRAWING NO: B-95355-02-A00	REVISION 0





0	29AUG05	ISSUE FOR ACCEPTANCE	EM		
REV	DATE	DESCRIPTION	BY	CHK	APP

NOTES:

Client Acceptance Issue
AUG 29 2005

CUSTOMER ACCEPTANCE

- ☐ - ACCEPTANCE AS DRAWN
☐ - ACCEPTANCE EXCEPT AS NOTED

BY: _____

DATE: _____

© COPYRIGHT 2000
ALL RIGHTS RESERVED

DRAWN BY: EM

DATE: 15AUG05

SCALE: 1/4"=1'-0"

CHECKED BY: _____

DATE: _____

APPROVED BY: _____

DATE: _____

CLIENT:

DEVON CANADA
54-PERSON PERMANENT CAMP
JACKFISH PROJECT

PROJECT:

11-12x60 UNIT KDR COMPLEX

INTERNAL DOCUMENT CONTROL

PLANT REDLINES BY: _____

DATE: _____

REDLINE REC'D BY ENG BY: _____

DATE: _____

DRAWING TITLE:

TYPICAL CROSS SECTION

DRAWING NO:

B-95355-02-D01

REVISION

0

ATCO structures

[illegible]

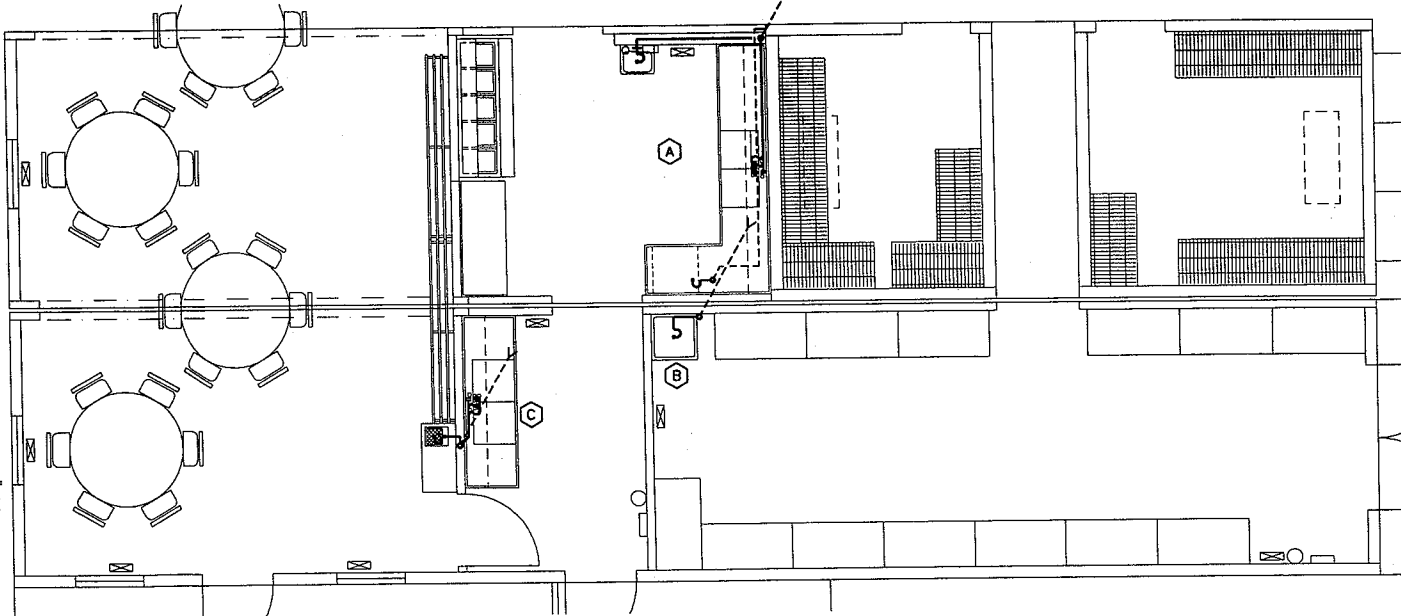
						<div>NOTES:</div> <div>Client Acceptance Issue</div> <div><input type="checkbox"/> ACCEPTANCE AS DRAWN</div> <div><input type="checkbox"/> ACCEPTANCE EXCEPT AS NOTED</div> <div>By: _____</div> <div>Date: _____</div> <div>AUG 2 9 2005</div>	<div>Customer's Acceptance</div> <div>COPYRIGHT 2000</div> <div>ALL RIGHTS RESERVED</div> <div>DRAWN BY: EM</div> <div>DATE: 22-Aug-05</div> <div>SCALE: N.T.S.</div> <div>CHECKED BY: DATE:</div> <div>APPROVED BY: DATE:</div>	<div>CLIENT:</div> <div>DEVON CANADA</div> <div>54-PERSON PERMANENT CAMP</div> <div>JACKFISH PROJECT</div> <div>PROJECT:</div> <div>11 -12x60 UNIT KDR COMPLEX</div>	<div>INTERNAL DOCUMENT CONTROL</div> <div>PLANT REDLINES BY: DATE:</div> <div>REDLINE REC'D BY ENG BY: DATE:</div> <div>DRAWING TITLE:</div> <div>SPECIFICATION</div> <div>DRAWING NO: REVISION:</div> <div>B-95355-02-XL01 0</div>	<div>ATCO Structures</div>
0	29-Aug-05	ISSUE FOR ACCEPTANCE	EM							
REV	DATE	DESCRIPTION	BY	CHK	APP					

[illegible]

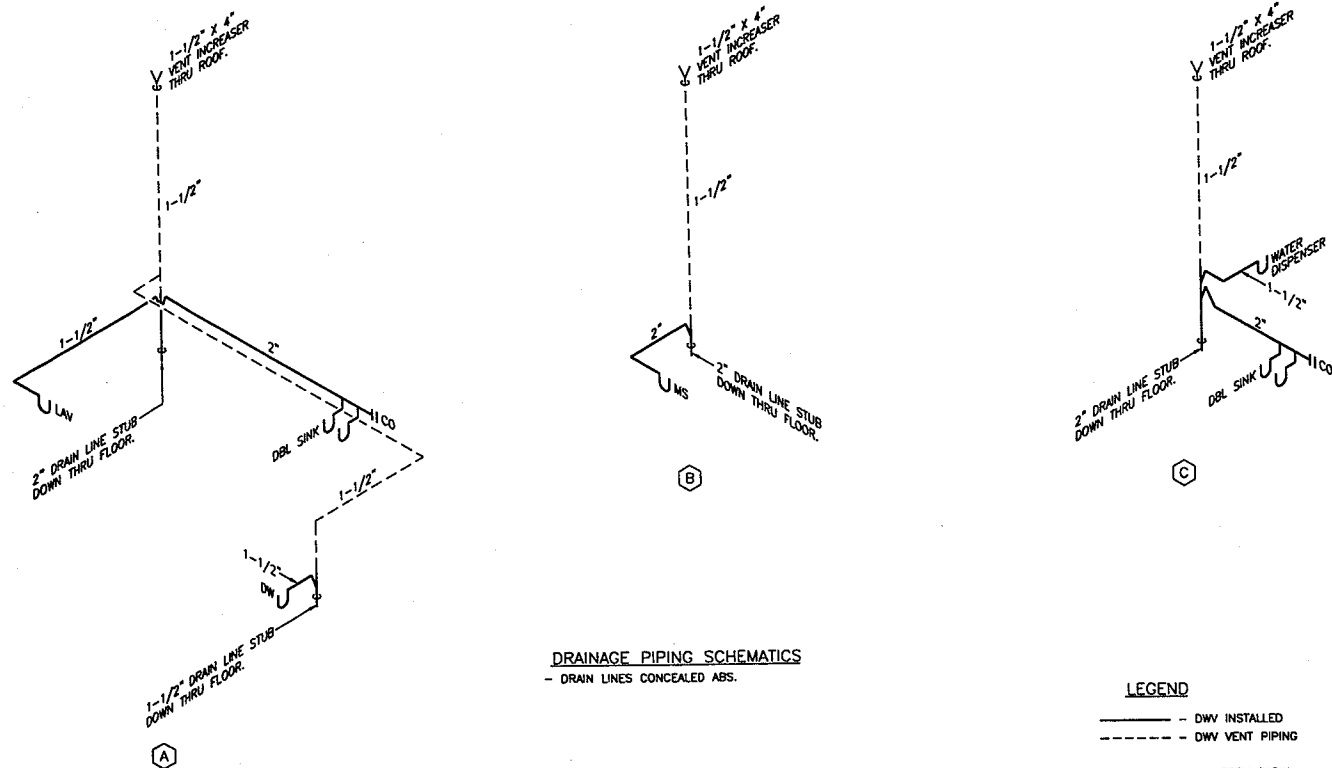
EQUIPMENT LIST:																				
Equipment Number	Size	Base	Description	Serial Number	0855	0856	0857	0858	0859	0860	0861	0862	0863	0864	0865					
				Total	1	2	3	4	5	6	7	8	9	10	11					
		400	PLUMBING:																	
401	Lavatory Basin-Cranada	set	Crane, Counter Mounted w/ Faucet, Plug/Chain, White	8					8											
402	Lavatory Basin-Westmont	set	Crane, Wall Mounted w/ Faucet, Plug/Chain, White	1		1														
403	Water Closet-Cranada	ea	Crane w/ Flush Tank, Open Front Seat, White	5					5											
404	Urinal-Colburn	ea	Crane w/ Flush Valve, Vinyl Backsplash, White	1					1											
405	Mop Sink	ea	6" Raised Base w/ Faucet	2	1			1												
406	Laundry Tub	ea	w/ Faucet	1				1												
407	82 gal Water Heater-NG	ea	w/ Saddle, Drip Pan, Base Plate, 6" Roof Vent, 6" CA Intake Duct/Pot, TPR Valve	1			1													
408	L-Shape SS Dishwash Counter	set	Free Standing w/ Double Sink, Faucet, See Detail	1		1														
409	26x90 Double SS Pot Sink	set	Free Standing w/ Drain Board Each Side, Swing Spout Faucet, 3kw Imersion Heater, See Detail	1	1															
410	Dishwasher	ea	Hobart SR24H w/ Booster Side Panel, Under Counter Mounted	1		1														
411	18x30 SS Sink	ea	Counter Mounted w/ Faucet, Strainer	1			1													
		600	APPLIANCES:																	
601	Clothes Dryer	ea	NG, Maytag w/ 4" Dryer Vent	1				1												
602	Clothes Washer	ea	Maytag Hot/Cold Service & Drain	1				1												
603	5 Compartment Hot Food Table	ea	Electric, Duke w/ Overshelf, Sneeze Guard, 2-Full/2-Halves/1-Triple Serving Pans	1		1														
604	20 cu ft Reachin Cooler	ea	Coldstream RSCP-24ALC , 1-Door	1			1													
605	40 cu ft Reachin Cooler	ea	Coldstream RSCP-48GSAL , 2-Door	1				1												
606	Single Deck Convection Oven-NG	ea	Blodgett ZEP-G1 w/ Draft Hood, 6" B-Vent	1			1													
607	Deep Fryer-NG	ea	Garland H35-280SC	1			1													
608	60" Range-NG	ea	Garland H284-36G w/ 4-Burner/36"Griddle/2-Oven	1			1													
609	Coffee Brewer	ea	Newco #NKDPAF, Counter Mounted w/ 2-Thermal Server on Removable Base	1			1													
610	Ice Machine	ea	Manitowoc S-Series 300 w/ B-170 Storage Bin	1			1													
611	Juice Dispenser	ea	Twin Jet JT-20, Counter Mounted w/ Drip Tray	1			1													
612	Milk Dispenser	ea	Silver King SK-5-MAJ, Counter Mounted w/ Drip Tray	1			1													
613	Water Station	ea	Counter Mounted w/ Drip Sink	1	1															
		700	MILLWORKS:																	
701	12x96 Tray Slide	ea	3-Bar SS w/ Wall Brackets	3		2	1													
702	6x74 Shelf	ea	Melamine Passthru w/ Finished Top & 4-Edges	1		1														
703	16x36/44 Shelf	ea	melamine Passthru w/ Finished Top & 4-Edges	1				1												
704	22x36/44 Shelf	ea	melamine Passthru w/ Finished Top & 4-Edges [PSSI]	1				1												
705	24x36 Dexion Shelvings	set	3-Tier, Galvanized Metal Deck	1				1												
706	24x48 Dexion Shelvings	set	3-Tier, Galvanized Metal Deck	16	13			3												
707	24x48 Wire Shelvings	set	3-Tier, Epoxy Coated	10		10														
708	L-Shape Plaslam Counter	set	36" High w/ 4" Apron/Backsplash, Chrome T-Legs, Lower/Upper Melamine Shelf, See Detail	1			1													
709	24x48 Plaslam Counter	ea	36" High w/ 4" Apron/Backsplash, Chrome T-Legs, Lower/Upper Melamine Shelf	1			1													
710	24x48 Plaslam Counter	ea	36" High w/ 4" Apron/Backsplash, Chrome Leg	1			1													
711	24x60 Plaslam Counter	ea	36" High w/ 4" Apron/Backsplash, Chrome T-Legs, Lower/Upper Melamine Shelf	1			1													
712	24x60 Plaslam Counter	ea	36" High w/ 4" Apron/Backsplash, Chrome T-Legs, Lower Melamine Shelf	1		1														
713	24x36 Plaslam Counter	ea	36" High w/ 4" Apron/Backsplash, Chrome T-Legs, Lower Melamine Shelf	1	1															
714	30x72 Bakers Table	set	Maple Top w/ Back/2-Side Risers, 1-15x20 Drawer, 3-22x22x23 Rolling Plastic Bin	1			1													
715	96" Vanity Top	set	Plaslam w/ 4" Backsplash/Apron & Chrome Legs, 1-LH/1-RH	2					2											
716	12x60 Coat/Hat Shelf	set	Birch Ply w/ Double Coat Hooks, Mounted @ 66" AFF [BKM#CB-014]	1					1											
717	12x96 Coat/Hat Shelf	set	Birch Ply w/ Double Coat Hooks, Mounted @ 66" AFF [BKM#CB-014]	2					2											
718	12x120 Coat/Hat Shelf	set	Birch Ply w/ Double Coat Hooks, Mounted @ 66" AFF [BKM#CB-014]	3					3											
719	60" Round Dining Table	set	Plastic Laminated, 30" High w/ Table Top Stiffener & Center Heavy Duty Pedestal Leg	8	2	2	2	2												
720	2-30x54 Toilet Partition [Ladies]	set	Shanahan, #706 Beige [2-Door, 1-Partition,3-Pilaster]	1					1											
721	3-30x54 Toilet Partition [Mens]	set	Shanahan, #706 Beige [2-Door, 2-Partition, 3-Pilaster]	1					1											
722	24x24 SS Counter	set	36" Freestanding	2			2													

UNIT #02
SER#260050856

UNIT #01
SER#260050855



FLOOR PLAN - DRAINAGE PIPING
SCALE: 1/4"=1'-0"



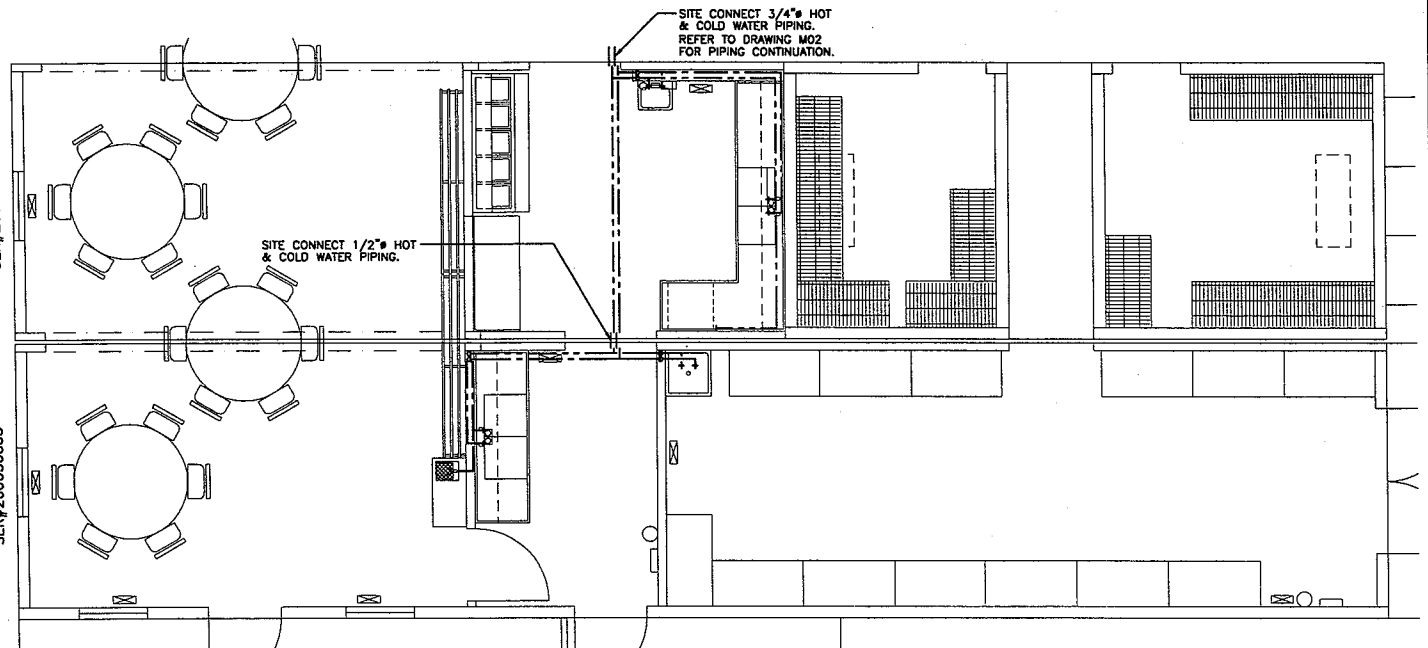
DRAINAGE PIPING SCHEMATICS
- DRAIN LINES CONCEALED ABS.

LEGEND

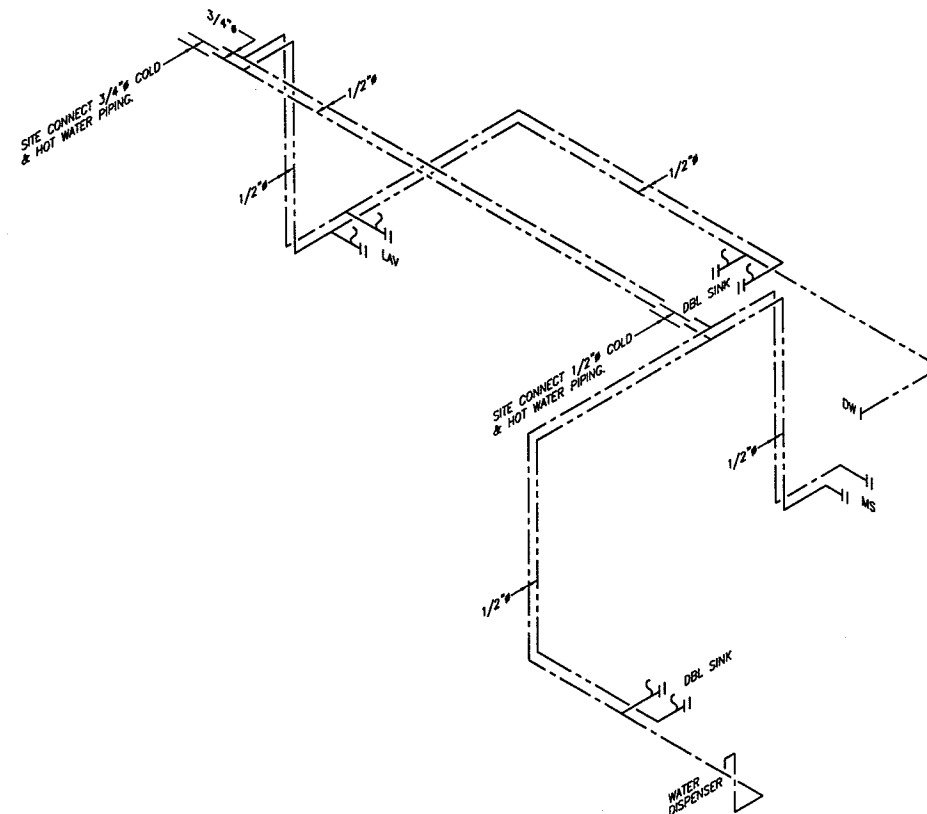
- DWV INSTALLED
- - - DWV VENT PIPING
- LAV - LAVATORY BASIN
- DBL SINK - DOUBLE STAINLESS STEEL SINK
- MS - MOP SINK
- DW - DISHWASHER
- CO - CLEANOUT

UNIT #02
SER#260050856

UNIT #01
SER#260050855



FLOOR PLAN - DRAINAGE PIPING
SCALE: 1/4"=1'-0"



POTABLE WATER PIPING SCHEMATIC
- PIPING TO BE CONCEALED 'PEX' PIPE AND FITTINGS.

LEGEND

- COLD WATER LINE
- - - HOT WATER LINE
- LAV - LAVATORY BASIN
- DBL SINK - DOUBLE STAINLESS STEEL SINK
- MS - MOP SINK
- DW - DISHWASHER

REV	DATE	DESCRIPTION	BY	CHK	APP
0	19AUG05	ISSUE FOR ACCEPTANCE	MWB		

NOTES:

Client Acceptance Issue
AUG 29 2005

CUSTOMER ACCEPTANCE

- ☐ - ACCEPTANCE AS DRAWN
- ☐ - ACCEPTANCE EXCEPT AS NOTED

BY: _____

DATE: _____

© COPYRIGHT 2000
ALL RIGHTS RESERVED

DRAWN BY: MWB

DATE: 08AUG05

SCALE: 1/4"=1'-0"

CHECKED BY: PCM

APPROVED BY: [Signature]

DATE: 22AUG05

DATE: 27SEP05

CLIENT:

DEVON CANADA
54 PERSON PERMANENT CAMP
JACKFISH PROJECT

PROJECT:

12-12'X60' UNIT KDR COMPLEX
KITCHEN DINER COMPLEX

INTERNAL DOCUMENT CONTROL

PLANT REDLINES BY: _____ DATE: _____

REDLINE REC'D BY ENG BY: _____ DATE: _____

DRAWING TITLE:

UNITS #01 & #02
PLUMBING LAYOUT

DRAWING NO:

D-95355-02-M01

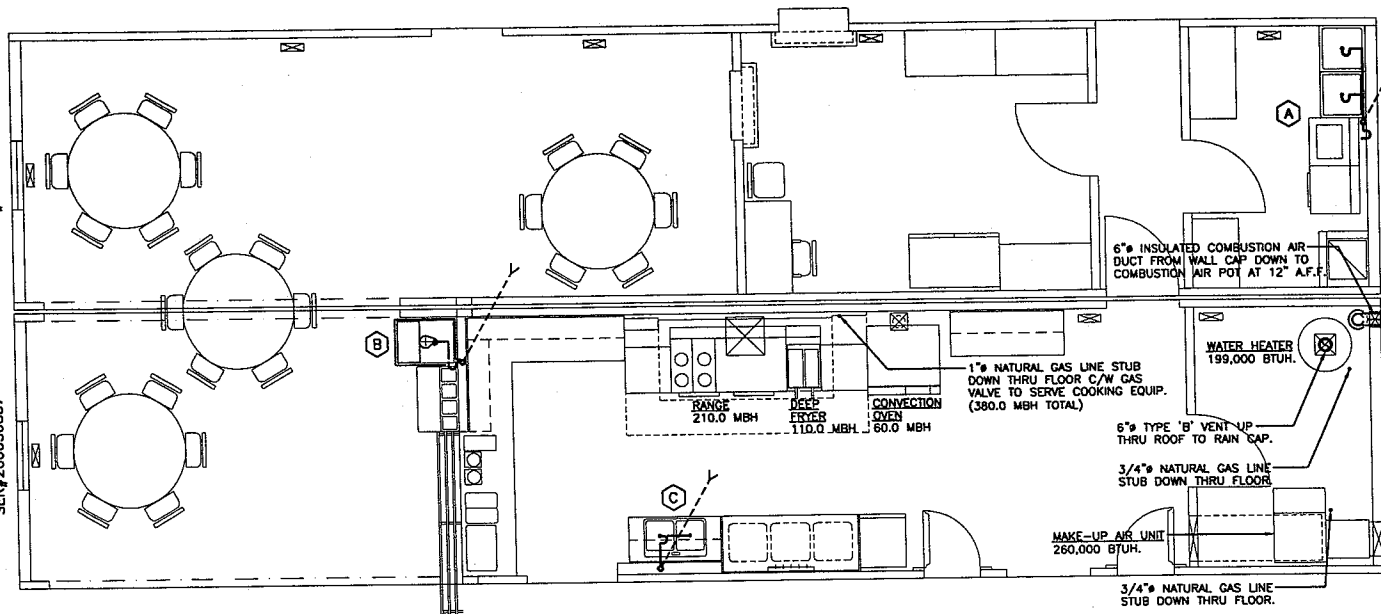
REVISION

0

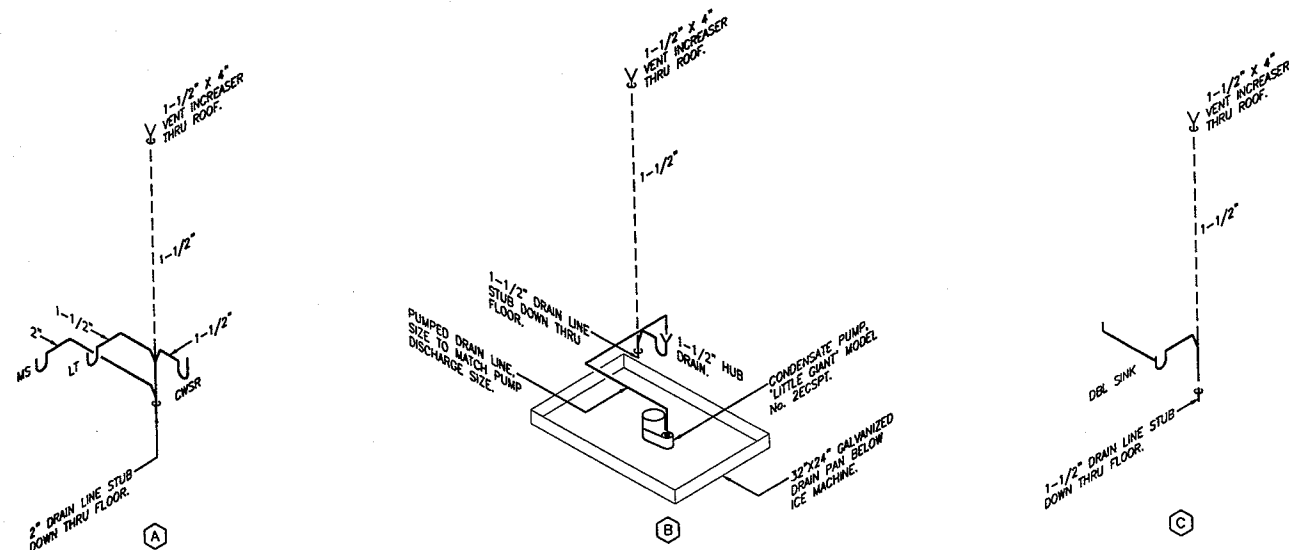
ATCO structures

UNIT #04
SER#260050858

UNIT #03
SER#260050857



FLOOR PLAN - DRAINAGE PIPING
SCALE: 1/4"=1'-0"



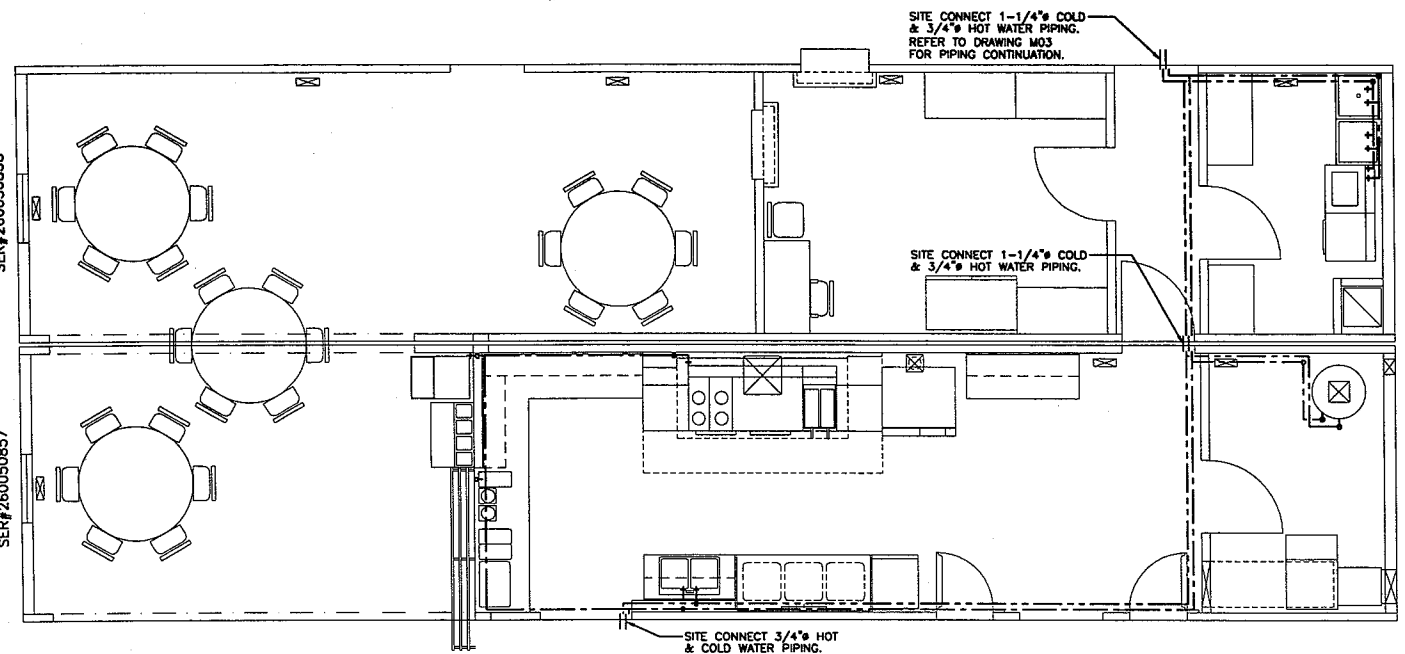
DRAINAGE PIPING SCHEMATICS
- DRAIN LINES CONCEALED ABS.

LEGEND
- DWV INSTALLED
- DWV VENT PIPING

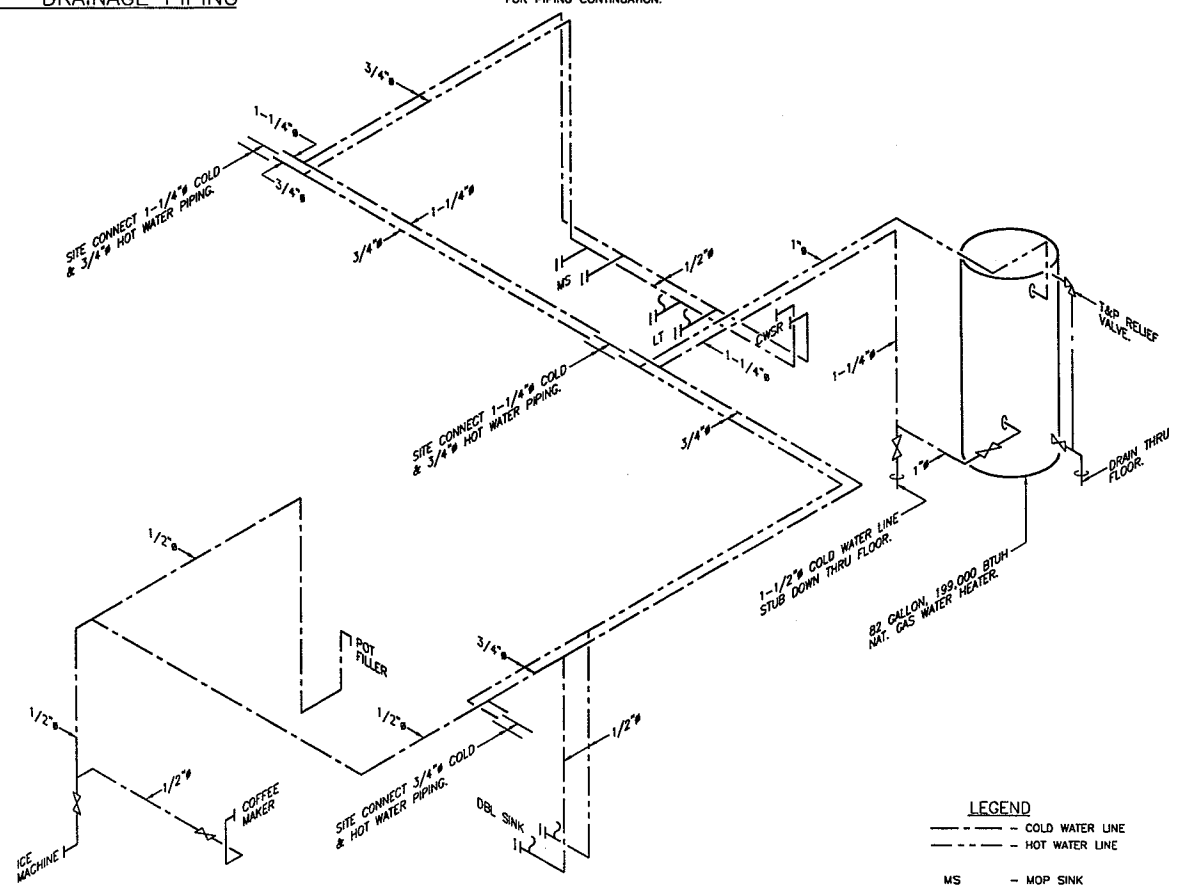
MS - MOP SINK
LT - LAUNDRY TUB
CWSR - CLOTHES WASHER
DBL SINK - DOUBLE STAINLESS STEEL SINK

UNIT #04
SER#260050858

UNIT #03
SER#260050857



FLOOR PLAN - DRAINAGE PIPING
SCALE: 1/4"=1'-0"



POTABLE WATER PIPING SCHEMATIC
- PIPING TO BE CONCEALED 'PEX' PIPE AND FITTINGS.

LEGEND
- COLD WATER LINE
- HOT WATER LINE

MS - MOP SINK
LT - LAUNDRY TUB
CWSR - CLOTHES WASHER
DBL SINK - DOUBLE STAINLESS STEEL SINK

REV	DATE	DESCRIPTION	BY	CHK	APP
0	19AUG05	ISSUE FOR ACCEPTANCE	MWB		

NOTES: **Client Acceptance Issue**
AUG 29 2005

CUSTOMER ACCEPTANCE

- ☐ - ACCEPTANCE AS DRAWN
- ☐ - ACCEPTANCE EXCEPT AS NOTED

BY: _____

DATE: _____

© COPYRIGHT 2000
ALL RIGHTS RESERVED

DRAWN BY: MWB
DATE: 08AUG05
SCALE: 1/4"=1'-0"
CHECKED BY: *PCM*
APPROVED BY: *LA*

CLIENT:

DEVON CANADA
54 PERSON PERMANENT CAMP
JACKFISH PROJECT

PROJECT:

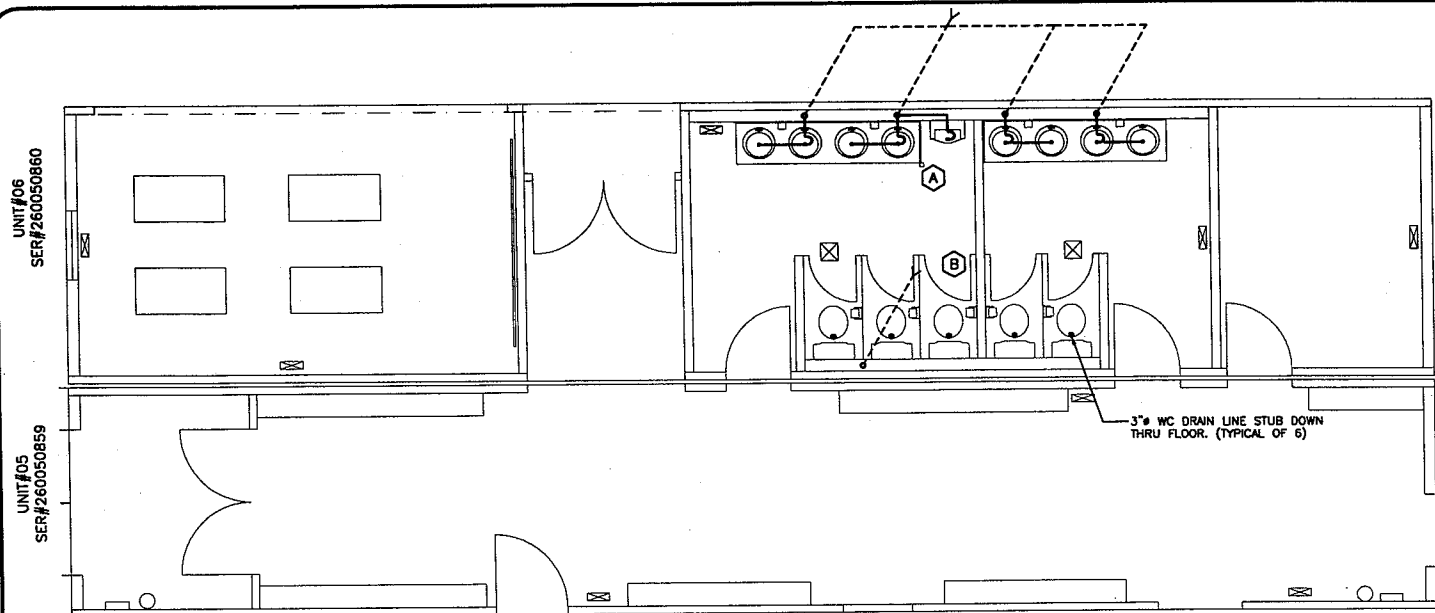
12-12'X60' UNIT KDR COMPLEX
KITCHEN DINER COMPLEX

INTERNAL DOCUMENT CONTROL

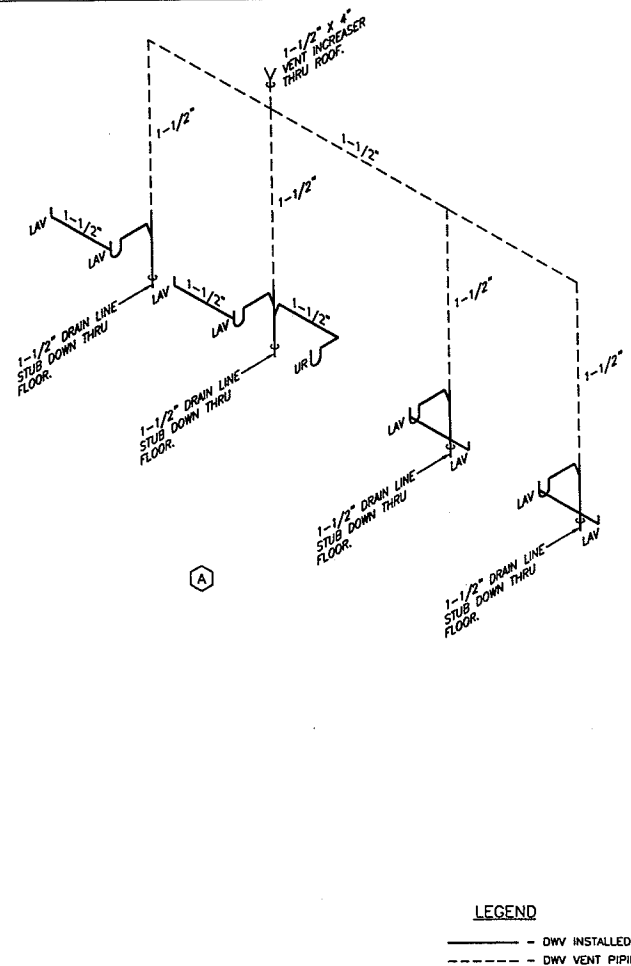
PLANT REDLINES BY: _____ DATE: _____
REDLINE REC'D BY ENG BY: _____ DATE: _____
DRAWING TITLE:
UNITS #03 & #04
PLUMBING LAYOUT

DRAWING NO:
D-95355-02-M02
REVISION
0

ATCOstructures

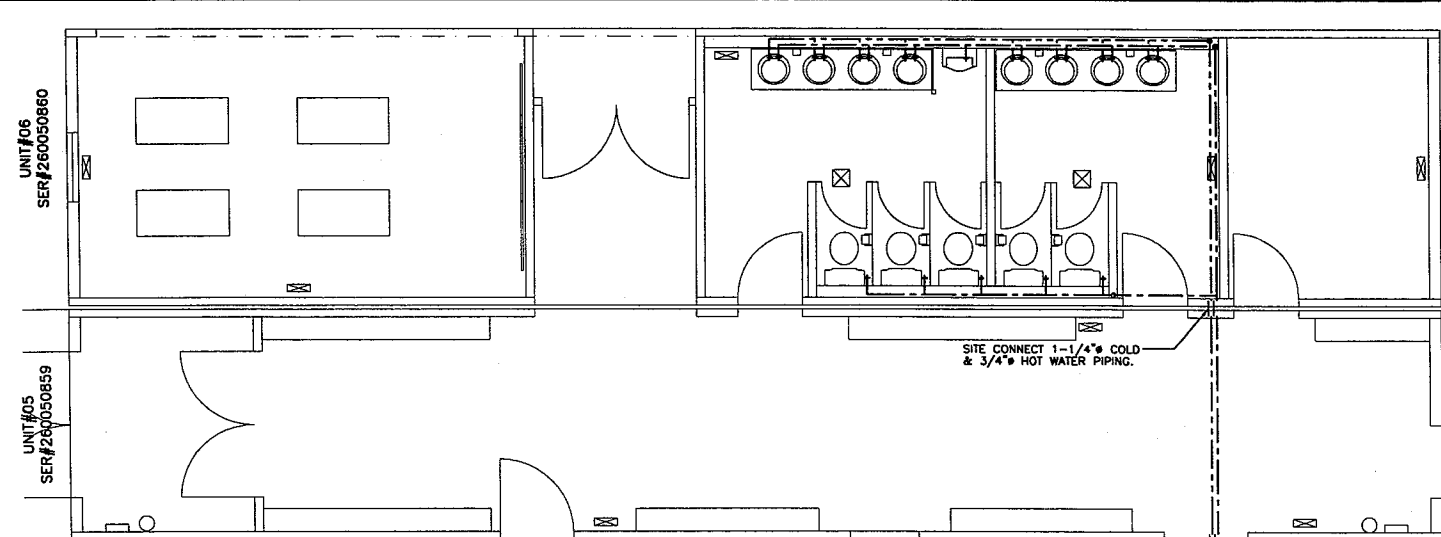


FLOOR PLAN - DRAINAGE PIPING
SCALE: 1/4"=1'-0"

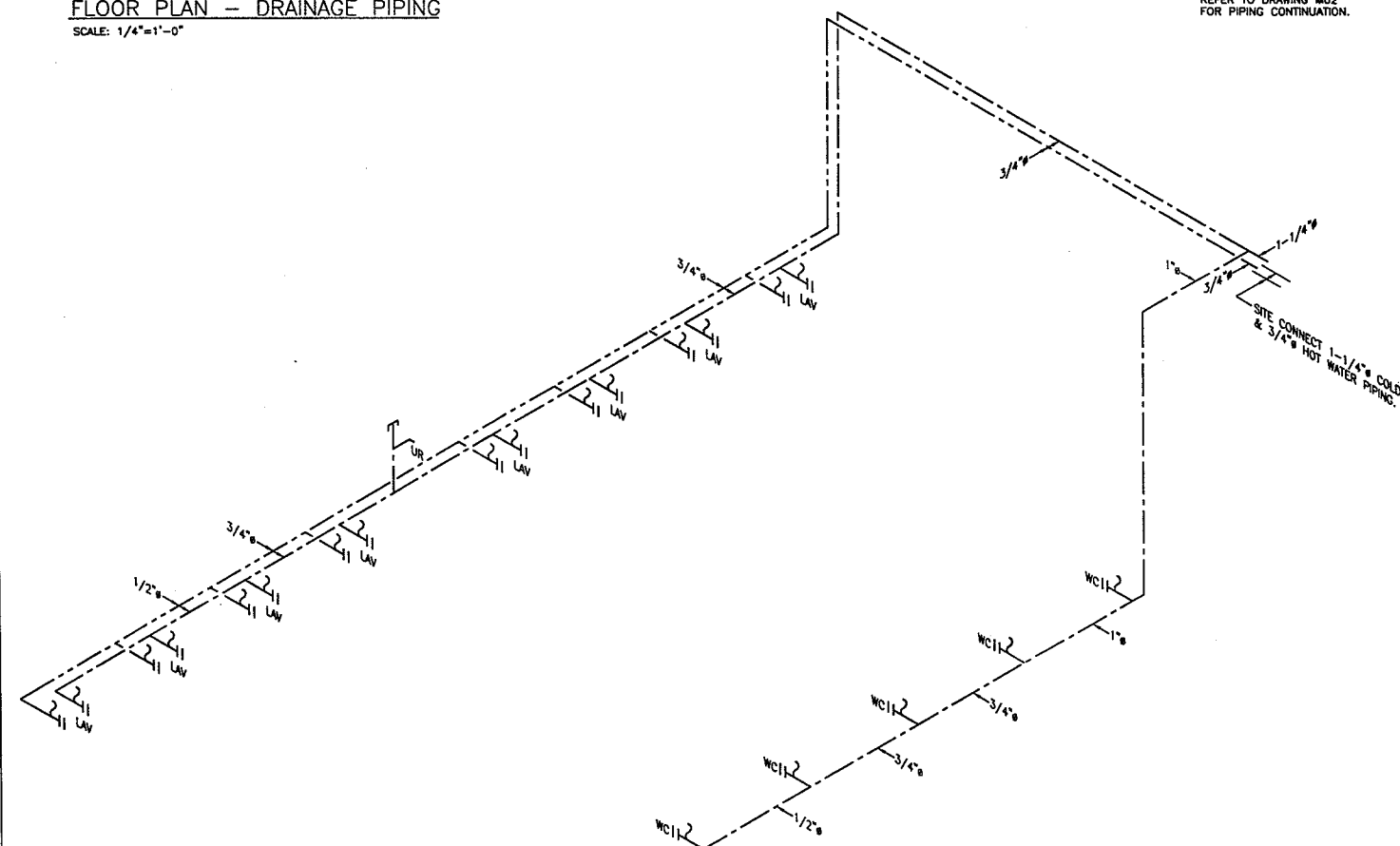


DRAINAGE PIPING SCHEMATICS
- DRAIN LINES CONCEALED ABS.

- LEGEND**
- DWV INSTALLED
 - - - - - DWV VENT PIPING
 - WC - WATER CLOSET
 - UR - URINAL
 - LAV - LAVATORY



FLOOR PLAN - DRAINAGE PIPING
SCALE: 1/4"=1'-0"



POTABLE WATER PIPING SCHEMATIC
- PIPING TO BE CONCEALED 'PEX' PIPE AND FITTINGS.
- PIPING LARGER THAN 1" TO BE TYPE 'L' COPPER.

- LEGEND**
- COLD WATER LINE
 - - - - - HOT WATER LINE
 - WC - WATER CLOSET
 - UR - URINAL
 - LAV - LAVATORY

REV	DATE	DESCRIPTION	BY	CHK	APP
0	19AUG05	ISSUE FOR ACCEPTANCE	MWB		

NOTES:

Client Acceptance Issue

AUG 29 2005

CUSTOMER ACCEPTANCE

☐ - ACCEPTANCE AS DRAWN

☐ - ACCEPTANCE EXCEPT AS NOTED

BY: _____

DATE: _____

© COPYRIGHT 2000
ALL RIGHTS RESERVED

DRAWN BY: MWB

DATE: 08AUG05

SCALE: 1/4"=1'-0"

CHECKED BY: *RCM* DATE: *22AUG05*

APPROVED BY: *LD* DATE: *22/08/05*

CLIENT: DEVON CANADA
54 PERSON PERMANENT CAMP
JACKFISH PROJECT

PROJECT: 12-12'X60' UNIT KDR COMPLEX
KITCHEN DINER COMPLEX

INTERNAL DOCUMENT CONTROL

PLANT REDLINES BY: _____ DATE: _____

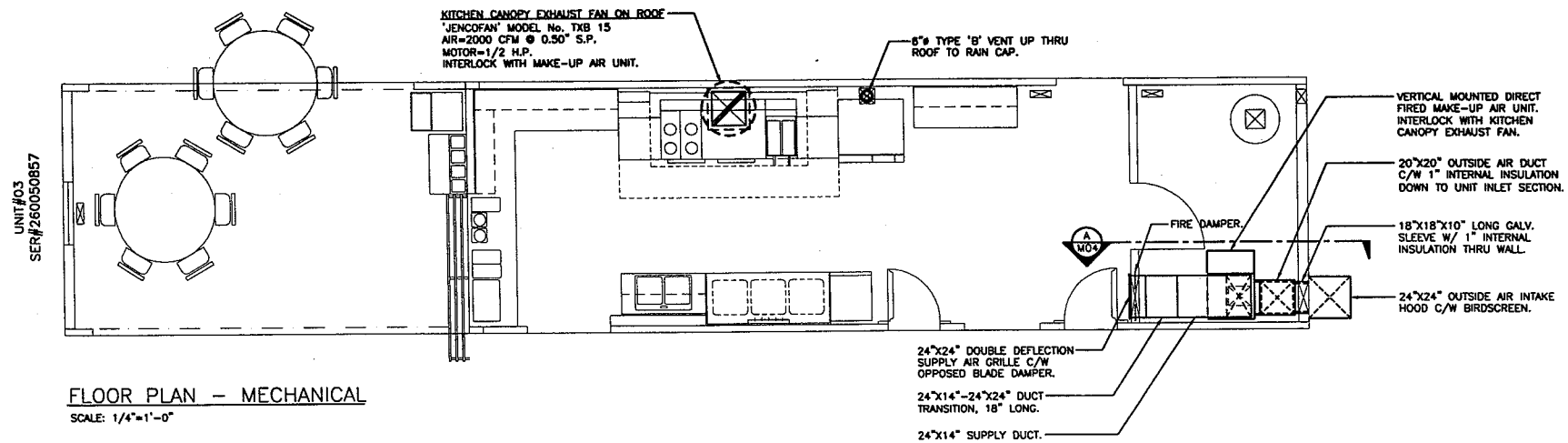
REDLINE REC'D BY ENG BY: _____ DATE: _____

DRAWING TITLE: UNITS #05 & #06
PLUMBING LAYOUT

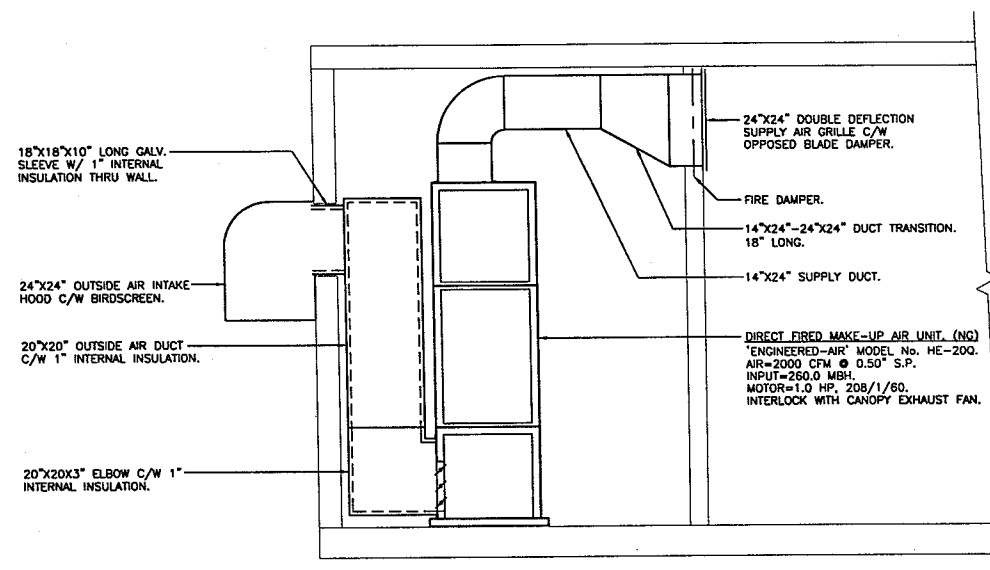
DRAWING NO: D-95355-02-M03

REVISION: 0

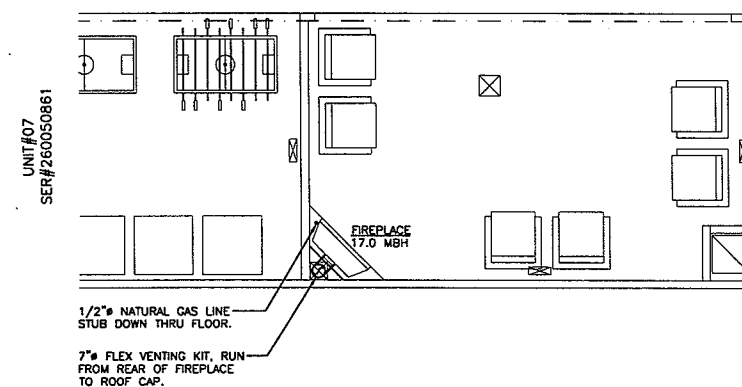
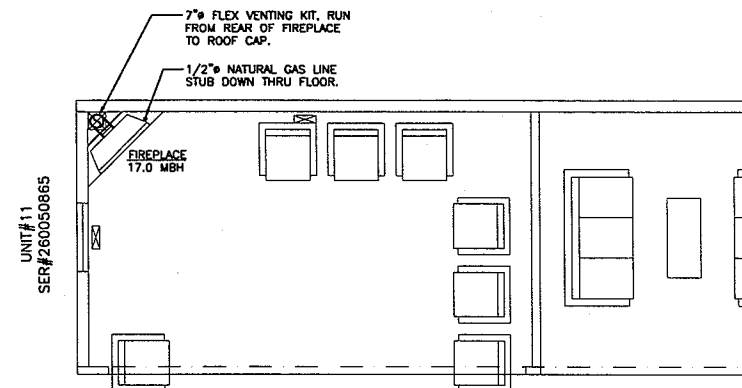
ATCO structures



FLOOR PLAN - MECHANICAL
SCALE: 1/4"=1'-0"



MAKE-UP AIR UNIT SECTION
SCALE: 1/2"=1'-0"



PART FLOOR PLANS - FIREPLACE VENT & GAS PIPING
SCALE: 1/4"=1'-0"

REV	DATE	DESCRIPTION	BY	CHK	APP
0	19AUG05	ISSUE FOR ACCEPTANCE	MWB		

NOTES:
Client Acceptance Issue
AUG 29 2005

CUSTOMER ACCEPTANCE
☐ - ACCEPTANCE AS DRAWN
☐ - ACCEPTANCE EXCEPT AS NOTED
BY: _____
DATE: _____

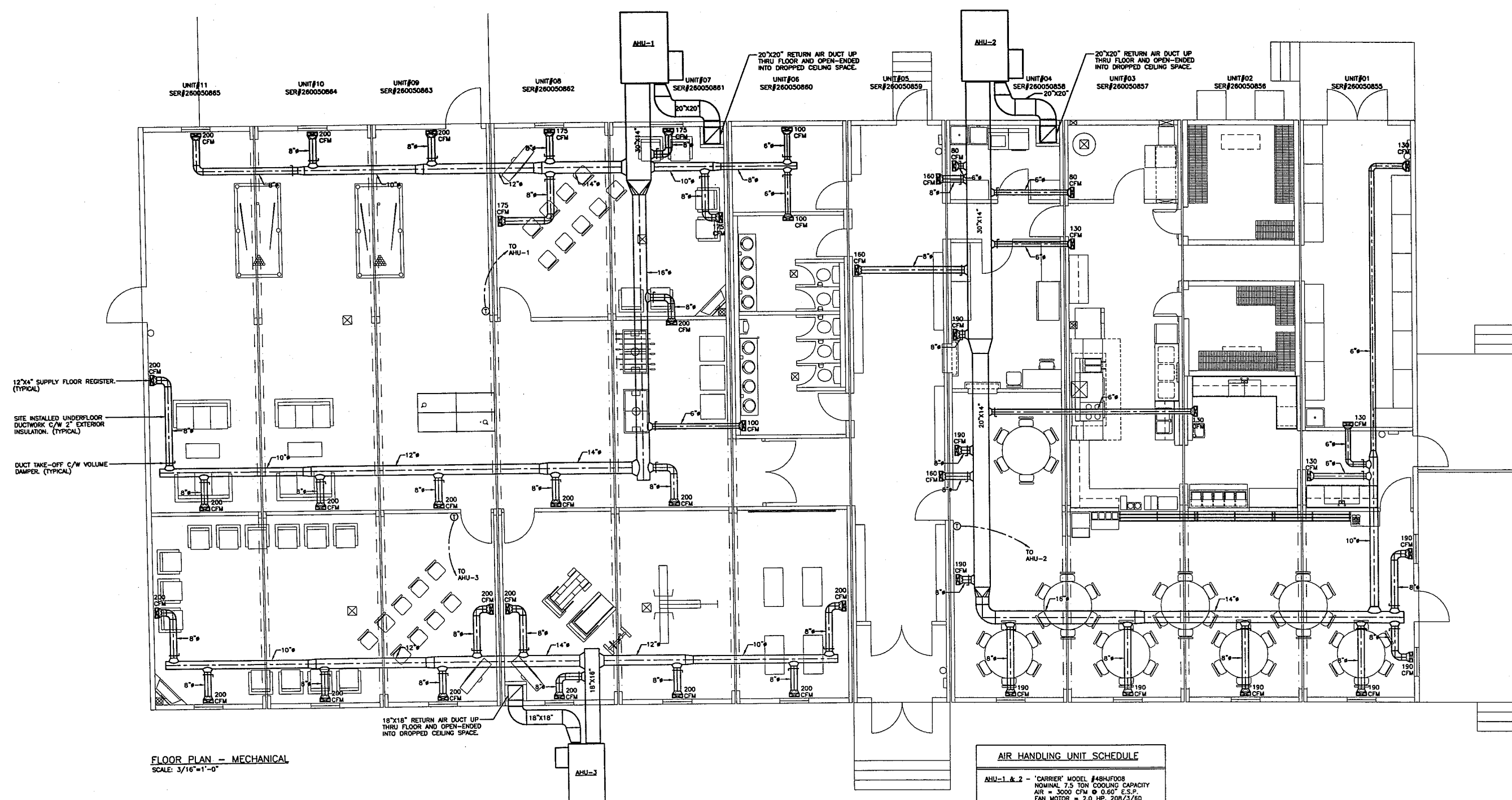
© COPYRIGHT 2000
ALL RIGHTS RESERVED

DRAWN BY: MWB
DATE: 08AUG05
SCALE: 1/4"=1'-0"
CHECKED BY: *RCM*
APPROVED BY: *PA*

CLIENT: DEVON CANADA
54 PERSON PERMANENT CAMP
JACKFISH PROJECT
PROJECT: 12-12'X60' UNIT KDR COMPLEX
KITCHEN DINER COMPLEX

INTERNAL DOCUMENT CONTROL
PLANT REDLINES BY: _____ DATE: _____
REDLINE REC'D BY ENG BY: _____ DATE: _____
DRAWING TITLE: UNITS #03, 07 & 11
MECHANICAL
DRAWING NO: D-95355-02-M04
REVISION: 0

ATCO structures



FLOOR PLAN - MECHANICAL
SCALE: 3/16"=1'-0"

AIR HANDLING UNIT SCHEDULE	
AHU-1 & 2	- "CARRIER" MODEL #48HUF008 NOMINAL 7.5 TON COOLING CAPACITY AIR = 3000 CFM @ 0.60" E.S.P. FAN MOTOR = 2.0 HP, 208/3/60 HEATING INPUT = 224,000 BTUH HEATING OUTPUT = 183,700 BTUH UNIT TO BE HORIZONTAL DISCHARGE C/W ECONOMIZER & AUTO CHANGEOVER HEAT/COOL THERMOSTAT.
AHU-3	- "CARRIER" MODEL #48HUF008 NOMINAL 5 TON COOLING CAPACITY AIR = 2000 CFM @ 0.60" E.S.P. FAN MOTOR = 1.5 HP, 208/3/60 HEATING INPUT = 150,000 BTUH HEATING OUTPUT = 120,000 BTUH UNIT TO BE HORIZONTAL DISCHARGE C/W ECONOMIZER & AUTO CHANGEOVER HEAT/COOL THERMOSTAT.

REV	DATE	DESCRIPTION	BY	CHK	APP
0	29JULY05	ISSUE FOR ACCEPTANCE	MWB		

NOTES:

Client Acceptance Issue

AUG 29 2005

CUSTOMER ACCEPTANCE

☐ - ACCEPTANCE AS DRAWN
☐ - ACCEPTANCE EXCEPT AS NOTED

BY: _____

DATE: _____

© COPYRIGHT 2000
ALL RIGHTS RESERVED

DRAWN BY: MWB
DATE: 29JULY05
SCALE: 3/16"=1'-0"

CHECKED BY: *RCA*
APPROVED BY: *MA*

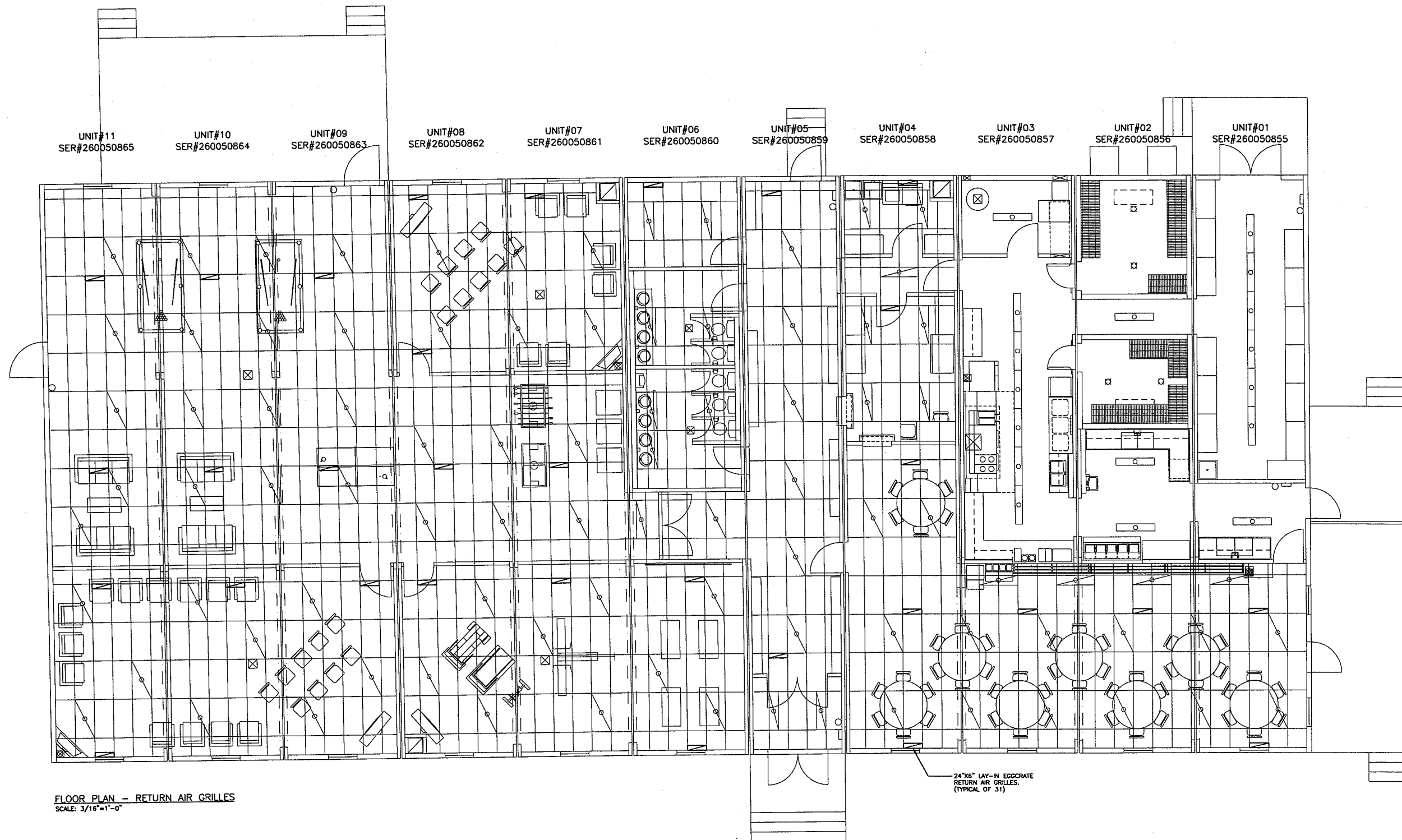
DATE: 22AUG05
DATE: 22AUG05

CLIENT: DEVON CANADA
54 PERSON PERMANENT CAMP
JACKFISH PROJECT

PROJECT: 12-12'X60' UNIT KDR COMPLEX

INTERNAL DOCUMENT CONTROL	
PLANT REDLINES BY:	DATE:
REDLINE REC'D BY ENG BY:	DATE:
DRAWING TITLE:	
FLOOR PLAN - MECHANICAL	
DRAWING NO:	REVISION
D-95355-02-M05	0





FLOOR PLAN - RETURN AIR GRILLES
SCALE: 3/16"=1'-0"

REV	DATE	DESCRIPTION	BY	CHK	APP
0	19AUG05	ISSUE FOR ACCEPTANCE	MWB		

NOTES:

Client Acceptance Issue

AUG 29 2005

CUSTOMER ACCEPTANCE

- ☐ - ACCEPTANCE AS DRAWN
☐ - ACCEPTANCE EXCEPT AS NOTED

BY: _____

DATE: _____

© COPYRIGHT 2000
ALL RIGHTS RESERVED

DRAWN BY: MWB

DATE: AUG 05

SCALE: 3/16"=1'-0"

CHECKED BY: *Rcm* DATE: 22 AUG 05

APPROVED BY: *[Signature]* DATE: 22/08/05

CLIENT:

DEVON CANADA
54-PERSON PERMANENT CAMP
JACKFISH PROJECT

PROJECT:

12-12x60 UNIT KDR COMPLEX

INTERNAL DOCUMENT CONTROL

PLANT REDLINES BY: _____ DATE: _____

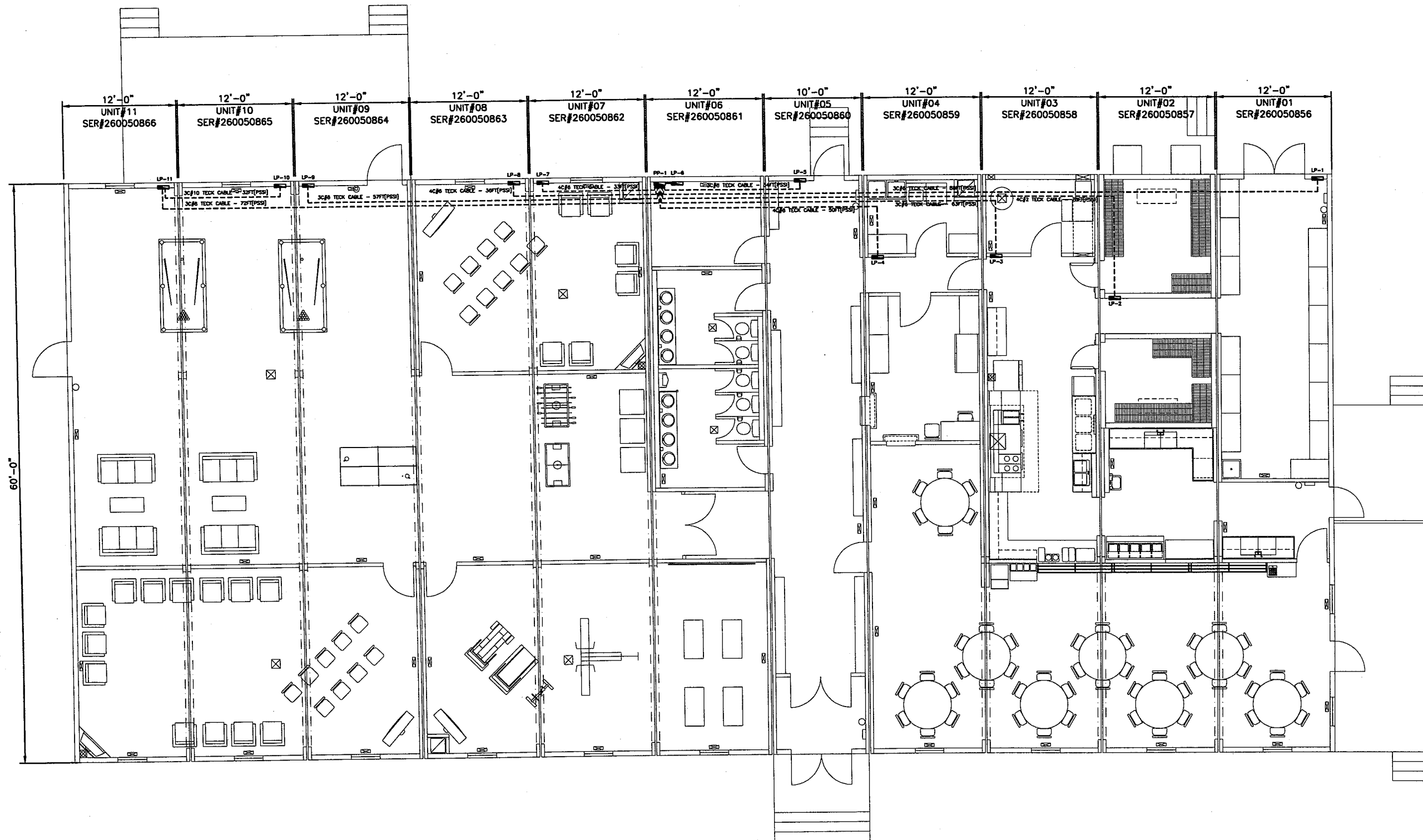
REDLINE REC'D BY ENG BY: _____ DATE: _____

DRAWING TITLE:
FLOOR PLAN - RETURN AIR GRILLES

DRAWING NO:
D-95355-02-M06

REVISION
Ø

ATCO structures



REV	DATE	DESCRIPTION	BY	CHK	APP
0	19AUG05	ISSUE FOR ACCEPTANCE	MJ		

NOTES:

Client Acceptance Issue
AUG 2 9 2005

CUSTOMER ACCEPTANCE

- ☐ - ACCEPTANCE AS DRAWN
- ☐ - ACCEPTANCE EXCEPT AS NOTED

BY: _____

DATE: _____

© COPYRIGHT 2000
ALL RIGHTS RESERVED

DRAWN BY: MJ

DATE: AUG2005

SCALE: 1/8" = 1'-0"

CHECKED BY: *[Signature]*

APPROVED BY: *[Signature]*

DATE: 8/16/05

DATE: 8/19/05

CLIENT:

DEVON CANADA
54-PERSON PERMANENT CAMP
JACKFISH PROJECT

PROJECT:

12-11x60 UNIT KDR COMPLEX

INTERNAL DOCUMENT CONTROL

PLANT REDLINES BY: _____ DATE: _____

REDLINE REC'D BY ENG BY: _____ DATE: _____

DRAWING TITLE:

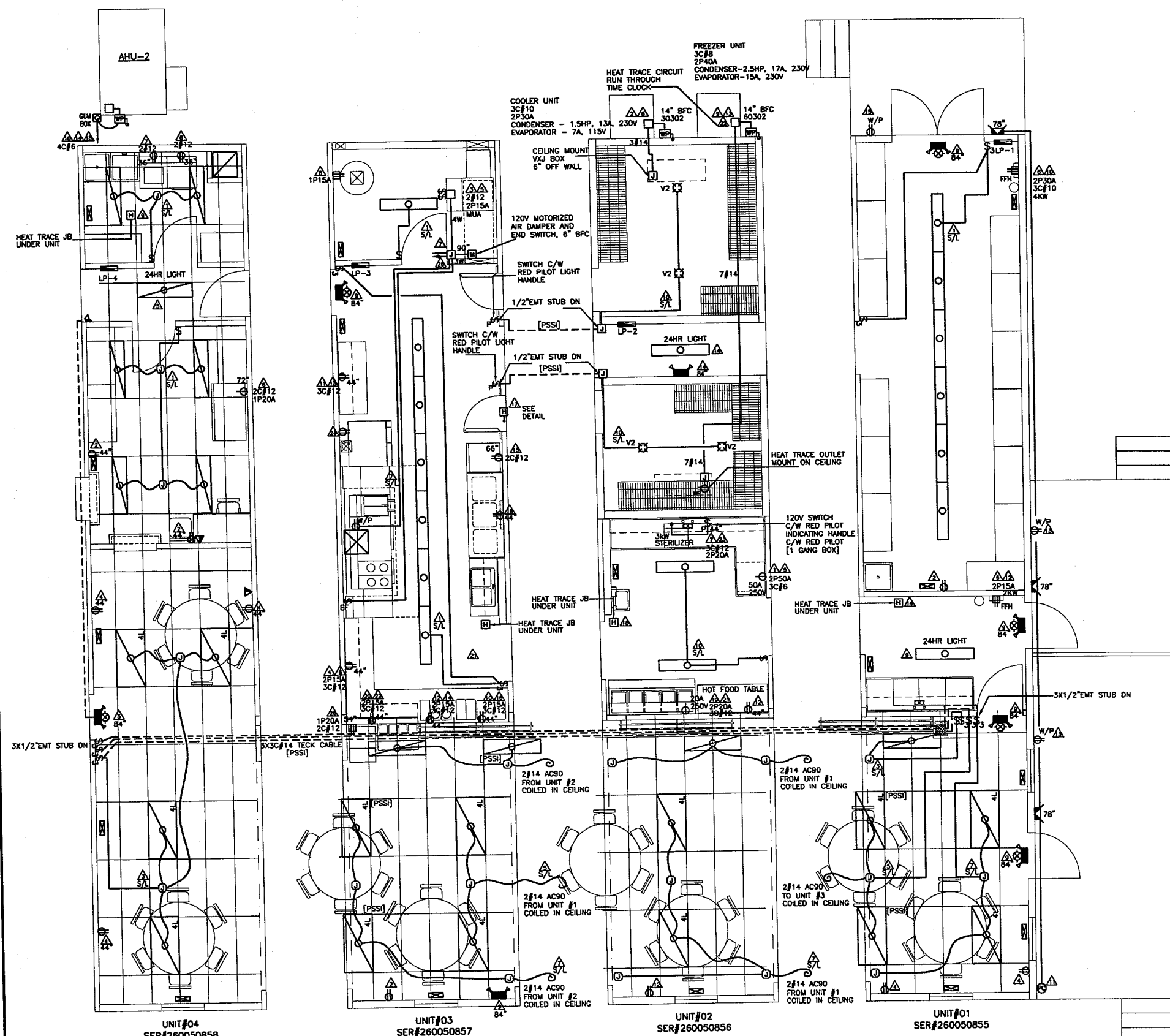
KITCHEN DINER REC COMPLEX
ELECTRICAL DISTRIBUTION LAYOUT

DRAWING NO: D-95355-02-E01

REVISION

0

ATCO structures



PANEL SCHEDULE

PANEL #	LP-4	PANEL TYPE	SCPL124
MOUNTING	FLUSH	VOLTS	120/208V
TOTAL LOAD	15kW (EST. DEMAND LOAD)	PHASE	3ø 4W
FED FROM	PP-5	MAIN BREAKER	NONE (SP30A IN PP-1)
FEEDER	4C#14TECK CABLE - PSS		
STUBS	1-1/4"(FEEDER) + 1/2"(END) EMT STUB DOWN		

WIRTS	DESCRIPTION	NO.	C/W	C/W	NO.	DESCRIPTION	WIRTS
540	LIGHTS	1	15	15	2	RECEPTACLE	400
720	LIGHTS	2	15	15	4	RECEPTACLE	800
125	EM 24HR LIGHTS	8	15	15	8	REACH IN COOLER	1410
800	WASHER	7	15	15	8	GAS DRYER	700
400	HEAT TRACE JB	9	1P	1P	18	AHU UNIT#2	100W
		11	15	15	12		
		13			14		
		15			16		
		17			30	18	
		19			20		
		21			22		
		23			24		

1" = OUTER DIMENSION 3/4" = INNER DIMENSION

PANEL SCHEDULE

PANEL #	LP-3	PANEL TYPE	CPL112				
MOUNTING	FLUSH	VOLTS	120/240V				
TOTAL LOAD	9.5kW (EST. DEMAND LOAD)	PHASE	1Ø 3Ø				
FED FROM	PP-1	MAIN BREAKER	NONE (2P30A IN PP-1)				
FEEDER	3C#14 TECK CABLE - PSSI						
STUBS	1(FEEDER) + 1/2"(END) EMT STUB DOWN						
WIRTS	DESCRIPTION	NO.	C/W	C/W	NO.	DESCRIPTION	WIRTS
630	LIGHTS	1	15	15	2	RECEPTACLE	400
1200	AHU UNIT	2	2P	2P	4	SPLIT RECEPTACLES	800
800	EXH/FAN/DAMPER MOTOR	7	15	15	8	WATER HEATER DAMPER	100
35	EM LIGHT	8	15	15	8	SPLIT RECEPT-AMX/AMX	800
800	SPLIT RECEPTACLES	11	2P	2P	12	SPLIT RECEPT COFFEE	800
		13	15	15	14		
1130	COOLER	15	15	15	16		
400	HEAT TRACE JB	17	1P	1P	18	RECEPTACLE	400
		19	1P	1P	20	SPLIT RECEPTACLES	800
400	HEAT TRACE JB	21	1P	1P	22	CONNECTION OVER	400
		23	15	15	24	ICE MESH	1472
		25	15	15	26	FURNACE SHUTDOWN RELAY	100
		27	15	15	28		
		29	15	15	30		
		31	22	22			

PANEL SCHEDULE

PANEL #	LP-2	PANEL TYPE	SCPL124				
MOUNTING	FLUSH	VOLTS	120/208V				
TOTAL LOAD	27kW [EST. DEMAND LOAD]	PHASE	3Ø 4W				
FED FROM	PP-1	MAIN BREAKER	NONE (SP100A IN PP-1)				
FEEDER	4C#12 TECK CABLE - PSS						
STUBS	1-1/4" [FEEDER] + 1/2" [END] EMT STUB DOWN						
WIRTS	DESCRIPTION	NO.	C/W	C/W	NO.	DESCRIPTION	WIRTS
7600	DISH WASHER	1	2P	2P	4	COOLER UNIT	3630
		3					
		4					
		5					
		7	5Ø	5Ø	8		
7360	FREEZER UNIT	9	2P	2P	15	15 LIGHTS	880
		11			15	12 RECEPTACLE	400
		13			16	EM/24HR LIGHTS	125
		15			16	16 SPARE	
3000	STERILIZER	18	4P	1P	16	HEATER TRACE JB	400
3750	HOT FOOD TABLE	19	2P	1P	20	HEATER TRACE JB	400
		21	2Ø	1P	22	HEATER TRACE JB	400
		23	2Ø	1P	24		
		25			25		
		27			28		
		29			30		
		31			32		

* ALL OTHERS UNLISTED. Check Equipment Data Chart for Breaker

PANEL SCHEDULE

PANEL #	LP-1	PANEL TYPE	CPL112
MOUNTING	FLUSH	VOLTS	120/240V
TOTAL LOAD	9.5kW (EST. DEMAND LOAD)	PHASE	1Ø 3Ø
FED FROM	PP-1	MAIN BREAKER	NONE(2P30A IN PP-1)

FEEDER 3C#14 TECK CABLE - PSS

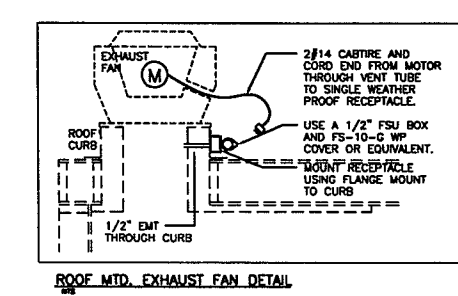
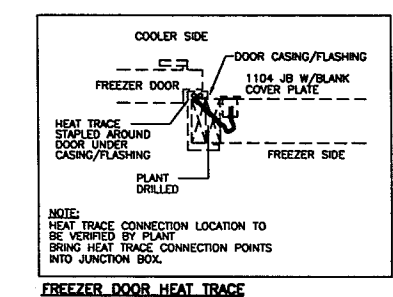
STUBS 1 (FEEDER) + 1/2" (END) EMT STUB DOWN

WIRTS	DESCRIPTION	NO.	C/W	C/W	NO.	DESCRIPTION	WIRTS
540	LIGHTS	1	15	15	2	RECEPTACLE	400
360	LIGHTS	3	15	15	4	RECEPTACLE	400
720	LIGHTS	8	15	15	8	FORCE FLOW HEATER	2000
1080	LIGHTS	7	15	15	8	FORCE FLOW HEATER	4000
225	EM 24HR LIGHTS	8	15	15	10		
400	EXTERIOR LIGHTS	11	15	15	12		
400	W/P RECEPTACLE	13	15	15	14	HEATER TRACE JB	400
		15	15	15	16		
		17	15	15	18		
		19	15	15	20		
		21	15	15	22		
		23	15	15	24		

* - CUTLER-HAMMER 30mA ground FAULT CIRCUIT BREAKER

- LEGEND**
- 2'x4' FLUORESCENT T-BAR MTD. FIXTURE 4 LAMP
 - 1'x4' FLUORESCENT T-BAR MTD. FIXTURE 2 LAMP
 - 200 WATT VAPOUR PROOF FIXTURE
 - 150W HIGH PRESSURE SODIUM, WALL MOUNT
 - PIPE MOUNTED PHOTOCELL - TORK 2000 SERIES
 - 15A/125V SINGLE POLE SWITCH-WHITE
 - 15A/125V 3-WAY SWITCH-WHITE
 - 15A/125V SINGLE POLE SWITCH-WHITE
 - WEATHER PROOF DISCONNECT SIZE AS SHOWN ON DWG.
 - OCTAGON JUNCTION BOX
 - JUNCTION BOX SIZE AS REQUIRED
 - SINGLE RECEPTACLE, SIZE INDICATED ON DWG.
 - 15A/125V DUPLEX RECEPTACLE-WHITE
 - SPLIT-WIRED 15A/125V DUPLEX RECEPTACLE-WHITE
 - HARD WIRED CONNECTION
 - POWER PANEL
 - COMBINATION EXIT/EMERGENCY LIGHT PACK WITH 2 HEADS 36W
 - EMERGENCY LIGHT PACK WITH 2 HEADS 36W
 - EMERGENCY LIGHT REMOTE HEAD 9W, 6V
 -

- NOTES:**
- ALL WIRE TO BE 2#14 NMD90 UNLESS OTHERWISE NOTED.
 - ALL ELECTRICAL CONNECTIONS TO BE MOUNTED 16" ABOVE FINISHED FLOOR (AFF) UNLESS OTHERWISE SPECIFIED.
 - ALL ELECTRICAL DEVICES ARE TO BE WHITE IN COLOR.
 - JUNCTION BOXES FOR HEAT TRACE MOUNT UNDER UNIT.



REV	DATE	DESCRIPTION	BY	CHK	APP
1	19AUG05	ISSUE FOR ACCEPTANCE	BW		

NOTES:

Client Acceptance Issue

AUG 29 2005

CUSTOMER ACCEPTANCE

☐ - ACCEPTANCE AS DRAWN

☐ - ACCEPTANCE EXCEPT AS NOTED

BY: _____

DATE: _____

© COPYRIGHT 2000
ALL RIGHTS RESERVED

DRAWN BY: BW

DATE: AUG 2005

SCALE: 1/8" = 1'-0"

CHECKED BY: _____

APPROVED BY: _____

CLIENT:

DEVON CANADA

54-PERSON PERMANENT CAMP

JACKFISH PROJECT

PROJECT:

12-12x60 UNIT KDR COMPLEX

INTERNAL DOCUMENT CONTROL

PLANT REDLINES BY: _____ DATE: _____

REDLINE REC'D BY ENG BY: _____ DATE: _____

DRAWING TITLE:

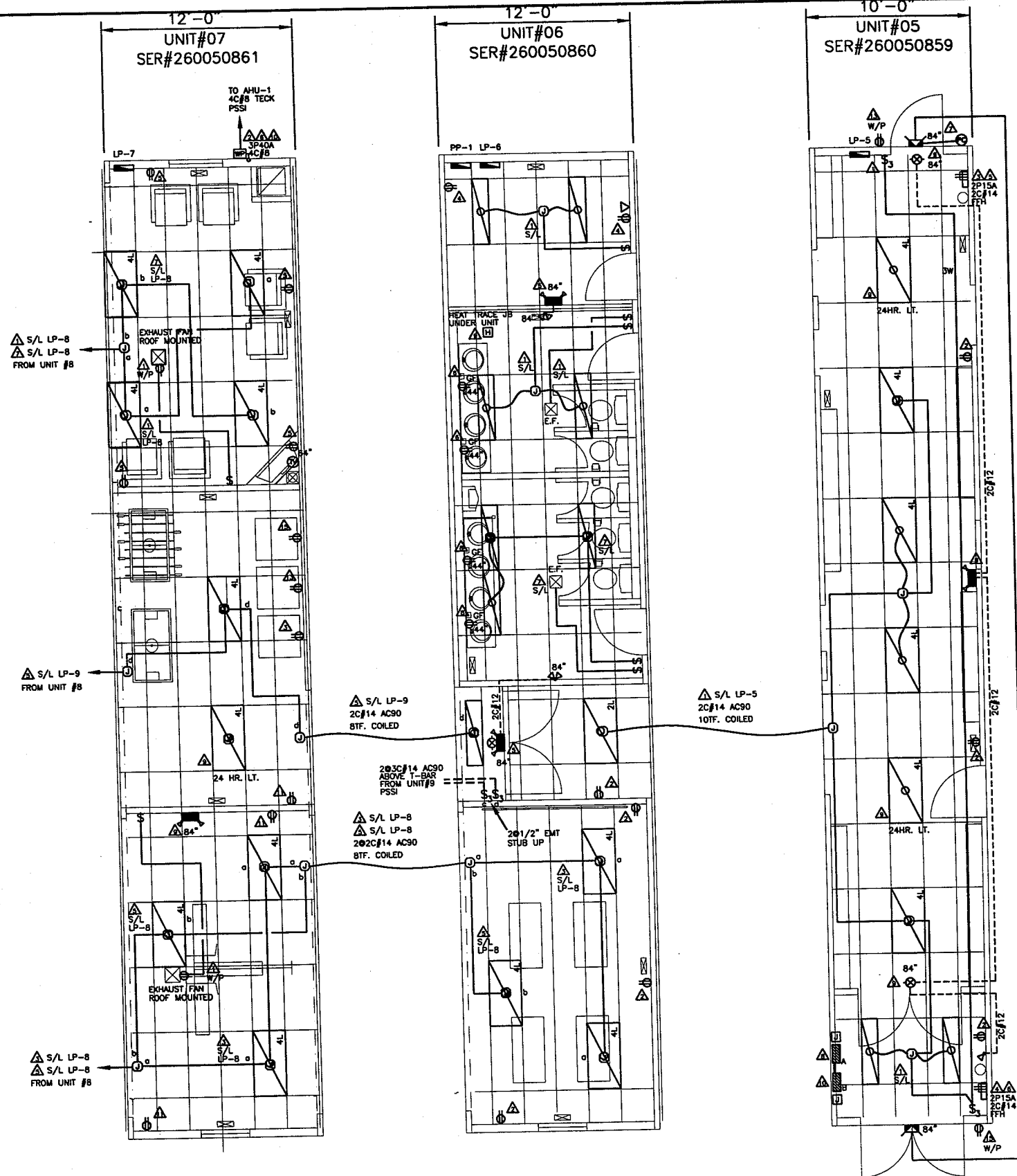
UNIT #1, #2, #3, #4

ELECTRICAL LAYOUT

DRAWING NO: D-95355-02-E02

REVISION: 0





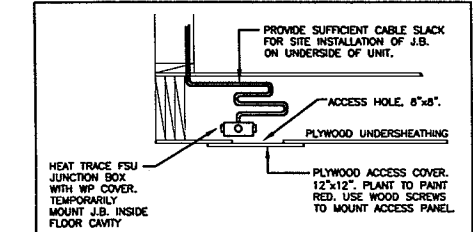
PANEL SCHEDULE									
PANEL #		LP-5		PANEL TYPE		CPL112			
MOUNTING		FLUSH		VOLTAJE		120/208V			
TOTAL LOAD		8.7kW (EST. DEMAND LOAD)		PHASE		1Ø 3Ø			
FED FROM		PP-1		WIRE BREAKER		NONE(3P40A IN PP-1)			
FEDDER		3C#8 NM90							
WIRING		3/4" EMT & 1/2" EMT STUB DOWN + 3/4" EMT(SPARE) STUB UP							
WIRING	DESCRIPTION	NO	C/W	C/B	NO	DESCRIPTION	WIRING	DESCRIPTION	WIRING
300	LIGHTS	1	15	20	2	RECEPTACLES	600		
2000	FORCE FLOW HEATER	3	SP	20	4	FORCE FLOW HEATER	2000		
		9	15	15	8				
140	EXT. LIGHTS	7	15	15	8	FIRE ALARM PANEL-A	200		
400	EM. LIGHT/24HR LIGHT	9	SP	15	10	FIRE ALARM PANEL-B	200		
		11	15	15	12	SPARE			
400	W/P RECEPTACLE	13	15	15	14				
400	W/P RECEPTACLE	15	15	15	16				
		17			18				
		19			20				
		21			22				
		23			24				

PANEL SCHEDULE									
PANEL #	LP-6		PANEL TYPE		CPL112				
MOUNTING	SURFACE		VOLTAGE		120/208V				
TOTAL LOAD	3.5kW (EST. DEMAND LOAD)		PHASE		1Ø 3Ø				
FED FROM	PP-1		WIRE BREAKER		NONE(2P30A IN PP-1)				
FEDDER	3C#8 NM90 TO PP-1 + 3/4" EMT(SPARE) STUB UP								
WIRING	3/4" EMT & 1/2" EMT STUB DOWN + 3/4" EMT(SPARE) STUB UP								
WIRING	DESCRIPTION	NO.	C/W	C/B	NO.	DESCRIPTION	WIRING	DESCRIPTION	WIRING
500	LIGHTS/FAN	1	15	20	2	RECEPTACLES	800		
	SPARE	2	15	15	4	RECEPTACLES	800		
70	EM. LIGHT	5	15	15	8	QTY RECEPTACLES	400		
500	LIGHTS/FAN	7	15	15	8	QTY RECEPTACLES	400		
400	HEAT TRACE	9	RP	15	10				
		11	15	15	12				
		13			14				
		15			16				
		17			18				
		19			20				
		21			22				
		23			24				

PANEL SCHEDULE									
PANEL #	LP-7	PANEL TYPE		3CPL112					
MOUNTING	FLUSH	VOLTAGE		120/208V					
TOTAL LOAD	17.5kW (EST. DEMAND LOAD)	PHASE		1Ø 3Ø					
FED FROM	PP-1	WIRE BREAKER		NONE(3P40A IN PP-1)					
FEDDER	4C#6 TECK CABLE - PSS								
WIRING	1" EMT & 1/2" EMT STUB DOWN + 3/4" EMT(SPARE) STUB UP								
WIRING	DESCRIPTION	NO.	C/W	C/B	NO.	DESCRIPTION	WIRING	DESCRIPTION	WIRING
400	FAN	1	15	SP	2	AHU-1	14.5kW		
400	RECEPTACLE	2	15	4					
800	RECEPTACLES	5	15	8					
	SPARE	7	15	4					
210	EM. LIGHTS	9	15	40	10				
800	RECEPTACLES	11	15	12					
400	RECEPTACLE	13	15	14					
400	RECEPTACLE	15	15	15					
		17		18					
		19		20					
		21		22					
		23		24					

PANEL SCHEDULE															
PANEL #	PP-1	PANEL TYPE	P128A2-420K												
MOUNTING	FLUSH	VOLTAJE	120/208V												
TOTAL LOAD	100.8kW (EST. DEMAND LOAD)	PHASE	3Ø 4Ø												
FED FROM	BY OTHERS	WIRE BREAKER	3P400A												
FEDDER	BY OTHERS														
WIRING	2" EMT + 1003/4" EMT + 1/2" EMT STUBDOWN														
WIRING	DESCRIPTION	NO.	C/W	C/B	NO.	DESCRIPTION	WIRING	DESCRIPTION	WIRING						
27kW	LP-2	1	SP	SP	2	LP-1	9.5kW								
		3		50	4	LP-3	9kW								
15kW	LP-4	5	SP	50	8	LP-5	6.7kW								
		9		SP	10	LP-6	6.7kW								
		11	50	40	12										
17.5kW	LP-7	13	SP	SP	14	LP-8	3.2kW								
		15		50	16										
		17	50	50	18	LP-9	4.5kW								
13.2kW	LP-8	19		SP	20										
		21		SP	22	LP-11									
		23	50	40	24										
		25			26										
		27			28										
		29			30										
		31			32										

- LEGEND**
- 2'x4' FLUORESCENT T-BAR MTD. FIXTURE 4 LAMP T8
 - 2'x4' FLUORESCENT T-BAR MTD. FIXTURE 2 LAMP T8
 - 1'x4' FLUORESCENT T-BAR MTD. FIXTURE 2 LAMP T8
 - 70W HIGH PRESSURE SODIUM, WALL MOUNT
 - PIPE MOUNTED PHOTOCELL - TORK 2000 SERIES
 - 15A/125V SINGLE POLE SWITCH-WHITE
 - 15A/125V 3-WAY SWITCH-WHITE
 - WEATHER PROOF DISCONNECT SIZE AS SHOWN ON DWG.
 - OCTAGON JUNCTION BOX
 - JUNCTION BOX SIZE AS REQUIRED
 - 15A/125V DUPLEX RECEPTACLE-WHITE
 - HARD WIRED CONNECTION
 - POWER PANEL
 - TWO ZONE MAIN FIRE ALARM PANEL C/W BATTERY BACKUP - NOTIFIER CFP-2402B
 - ADDRESSABLE MAIN FIRE ALARM PANEL C/W BATTERY BACKUP - NOTIFIER AFP-200
 - EXIT LIGHT SIGN
 - EMERGENCY LIGHT REMOTE HEAD 9W, 6V, 2HD
 - EMERGENCY LIGHT REMOTE HEAD 9W, 6V
 - COMBINATION EXIT/EMERGENCY LIGHT PACK WITH 2 HEADS 36W
 - EMERGENCY LIGHT PACK WITH 2 HEADS 36W
 -



- NOTES:**
- ALL WIRE TO BE 2#14 NM90 UNLESS OTHERWISE NOTED.
 - ALL ELECTRICAL CONNECTIONS TO BE MOUNTED 16" ABOVE FINISHED FLOOR (AFF) UNLESS OTHERWISE SPECIFIED.
 - ALL ELECTRICAL DEVICES ARE TO BE WHITE IN COLOR.
 - JUNCTION BOXES FOR HEAT TRACE MOUNT UNDER UNIT.
 - ALL TELEPHONE OUTLET C/W 3/4" PVC STUB DOWN TO UNDER UNIT AND BLANK PLATES.

REV	DATE	DESCRIPTION	BY	CHK	APP
1	15AUG05	ISSUE FOR ACCEPTANCE	ASMD		

NOTES:

Client Acceptance Issue

AUG 29 2005

CUSTOMER ACCEPTANCE

☐ - ACCEPTANCE AS DRAWN

☐ - ACCEPTANCE EXCEPT AS NOTED

BY: _____

DATE: _____

© COPYRIGHT 2000
ALL RIGHTS RESERVED

DRAWN BY: MJ

DATE: AUG.2005

SCALE: 1/4" = 1'-0"

CHECKED BY:

DATE: 8/19/05

APPROVED BY:

DATE: 8/19/05

CLIENT:

DEVON CANADA

54-PERSON PERMANENT CAMP

JACKFISH PROJECT

PROJECT:

12-11x60 UNIT KDR COMPLEX

INTERNAL DOCUMENT CONTROL

PLANT REDLINES BY: _____ DATE: _____

REDLINE REC'D BY ENG BY: _____ DATE: _____

DRAWING TITLE:

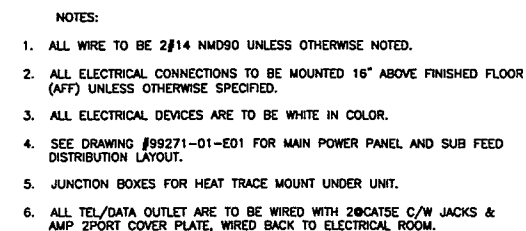
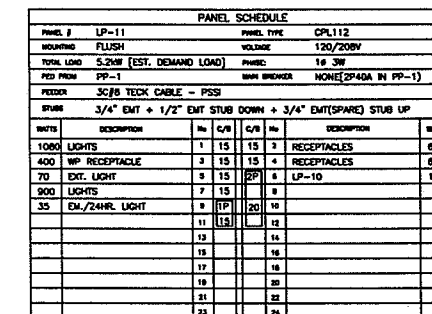
UNIT #5, #6, #7

ELECTRICAL LAYOUT

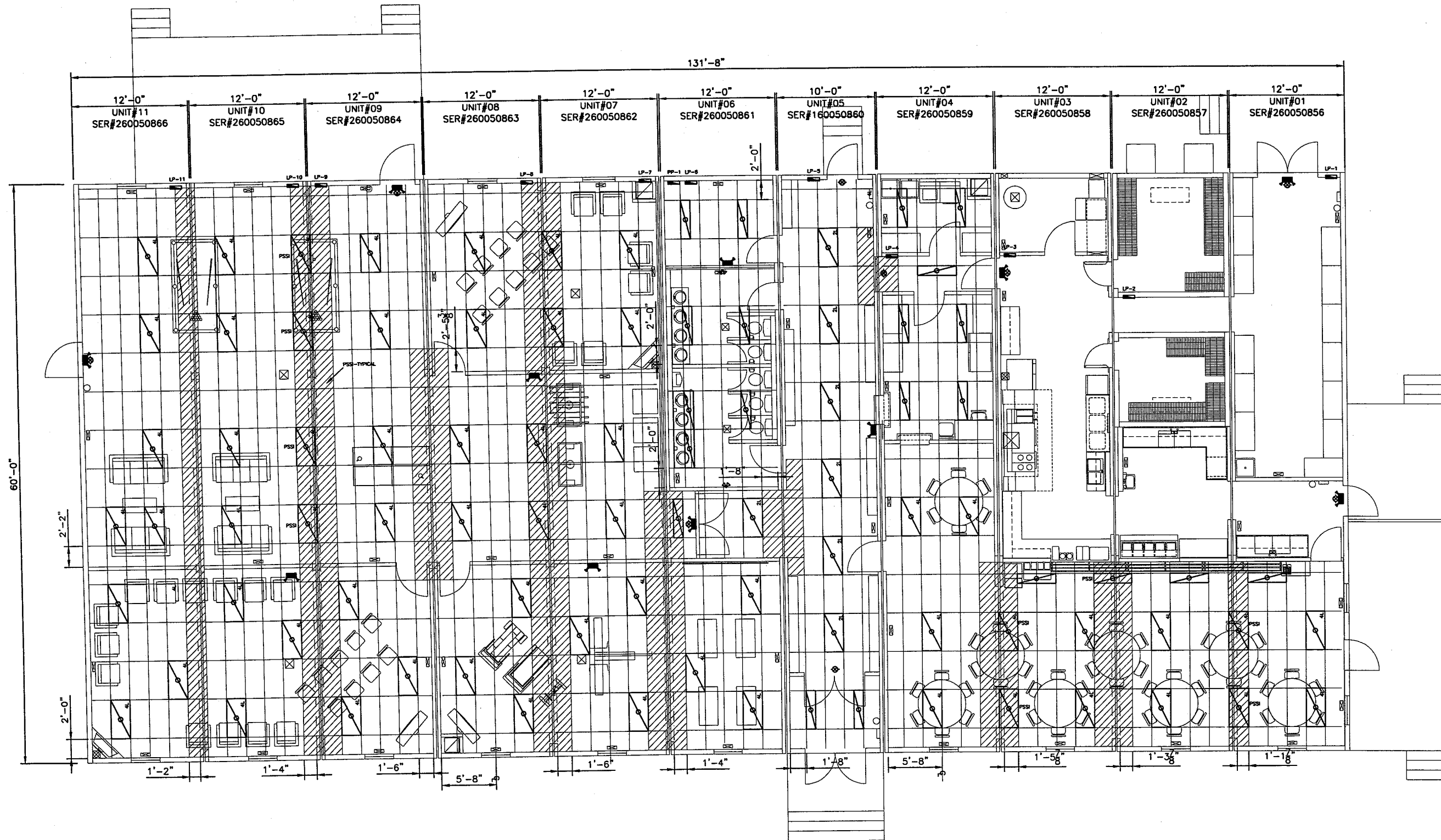
DRAWING NO: D-95355-02-E03

REVISION: 0

ATCO Structures



ATCO structures



REV	DATE	DESCRIPTION	BY	CHK	APP
0	9AUG05	ISSUE FOR ACCEPTANCE	MJ		

NOTES:

Client Acceptance Issue

AUG 29 2005

CUSTOMER ACCEPTANCE

- ☐ - ACCEPTANCE AS DRAWN
- ☐ - ACCEPTANCE EXCEPT AS NOTED

BY: _____

DATE: _____

© COPYRIGHT 2000
ALL RIGHTS RESERVED

DRAWN BY: MJ

DATE: AUG. 2005

SCALE: 1/16" = 1'-0"

CHECKED BY: _____

APPROVED BY: _____

CLIENT:

DEVON CANADA
54-PERSON PERMANENT CAMP
JACKFISH PROJECT

PROJECT:

12-12x60 UNIT KDR COMPLEX

INTERNAL DOCUMENT CONTROL

PLANT REDLINES BY: _____ DATE: _____

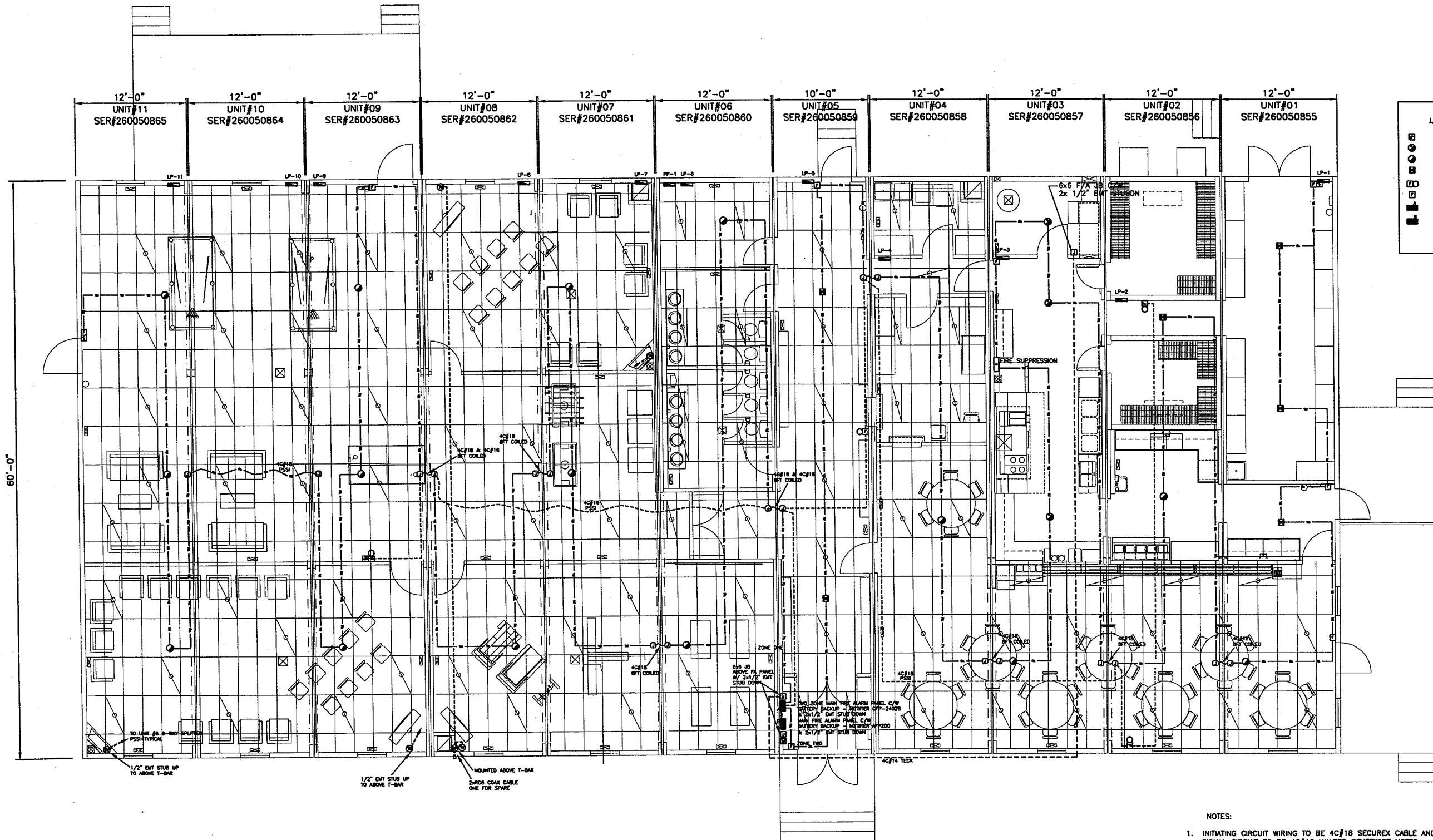
REDLINE REC'D BY ENG BY: _____ DATE: _____

DRAWING TITLE:
KITCHEN DINER REC COMPLEX
T-BAR CEILING LIGHTING LAYOUT

DRAWING NO:
D-95355-02-E05

REVISION
0

ATCO Structures



REV	DATE	DESCRIPTION	BY	CHK	APP
0	18AUG05	ISSUE FOR ACCEPTANCE	MJ		

NOTES:

Client Acceptance Issue

AUG 29 2005

CUSTOMER ACCEPTANCE

☐ - ACCEPTANCE AS DRAWN

☐ - ACCEPTANCE EXCEPT AS NOTED

BY: _____

DATE: _____

© COPYRIGHT 2000
ALL RIGHTS RESERVED

DRAWN BY: MJ

DATE: AUG.2005

SCALE: 1/16"=1'-0"

CHECKED BY: *[Signature]* DATE: 8/19/05

APPROVED BY: *[Signature]* DATE: 8/19/05

CUSTOMER: DEVON CANADA
54-PERSON PERMANENT CAMP
JACKFISH PROJECT

PROJECT: 12-12x60 UNIT KDR COMPLEX

INTERNAL DOCUMENT CONTROL

PLANT REDLINES BY: _____ DATE: _____

REDLINE REC'D BY ENG BY: _____ DATE: _____

DRAWING TITLE: KITCHEN DINER REC COMPLEX
FIRE ALARM AND TV LAYOUT

DRAWING NO: D-95355-02-E06

REVISION: 0

