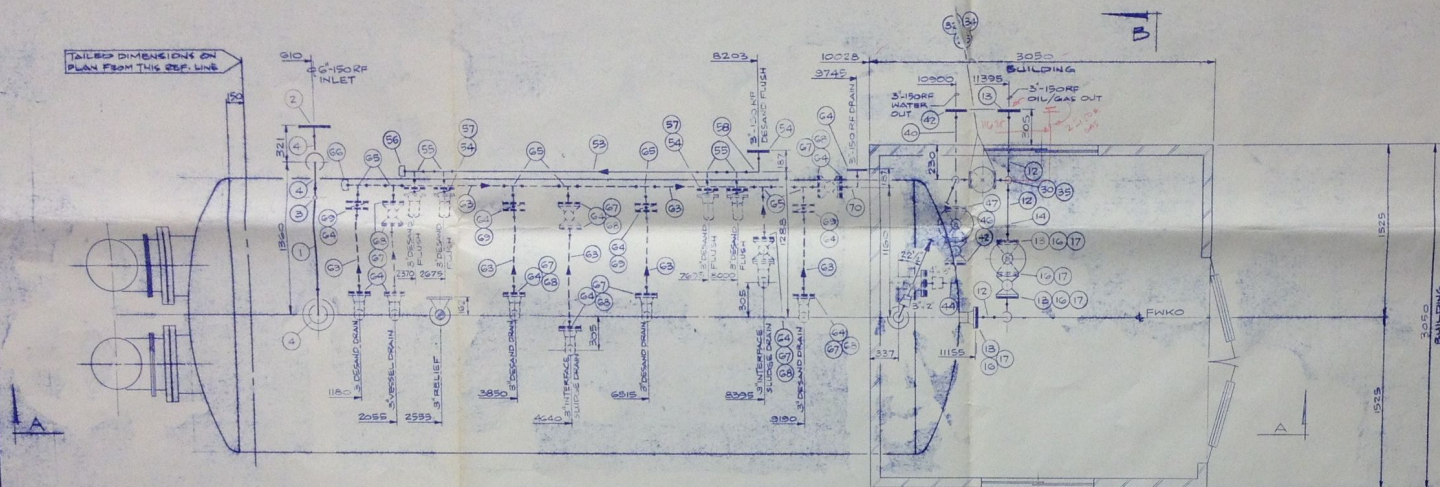
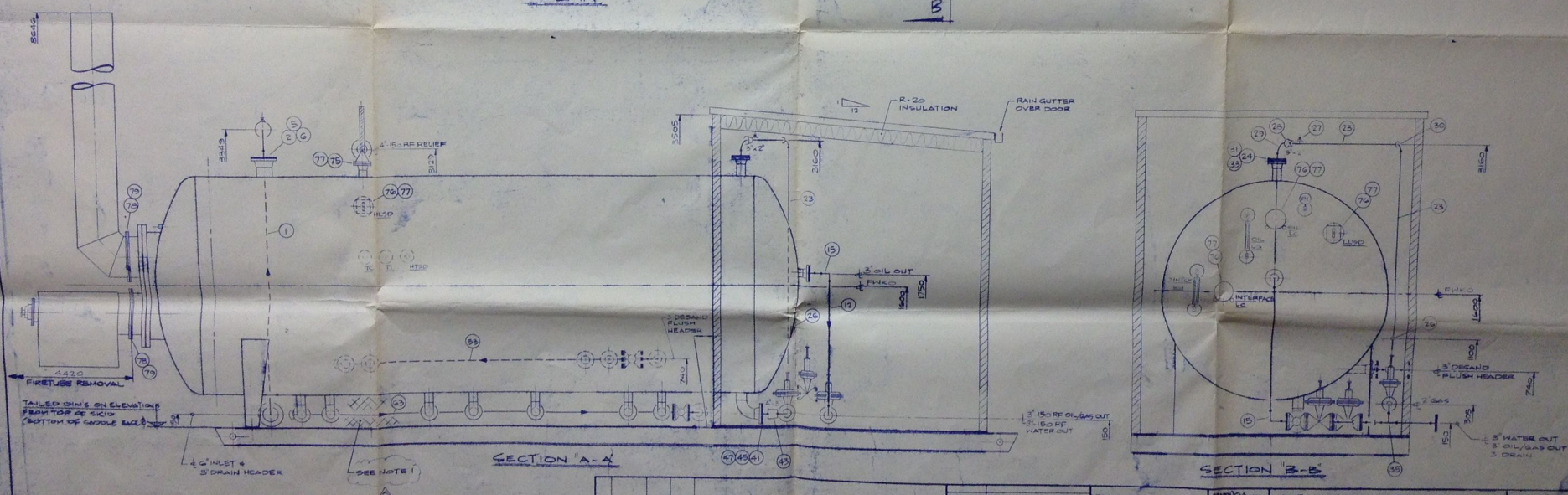


INSULATED UTILIDOR BELOW VESSEL FOR
DESAND & DRAIN CONNECTIONS.



PLAN



SECTION "A-A"

SECTION "B-B"

[illegible]

V:100: HORIZONTAL-HFH-FWKQ

2438 mm OD x 10698 mm LONG x 517 Kpa DP
1.6 mm CORR. ALLOW.

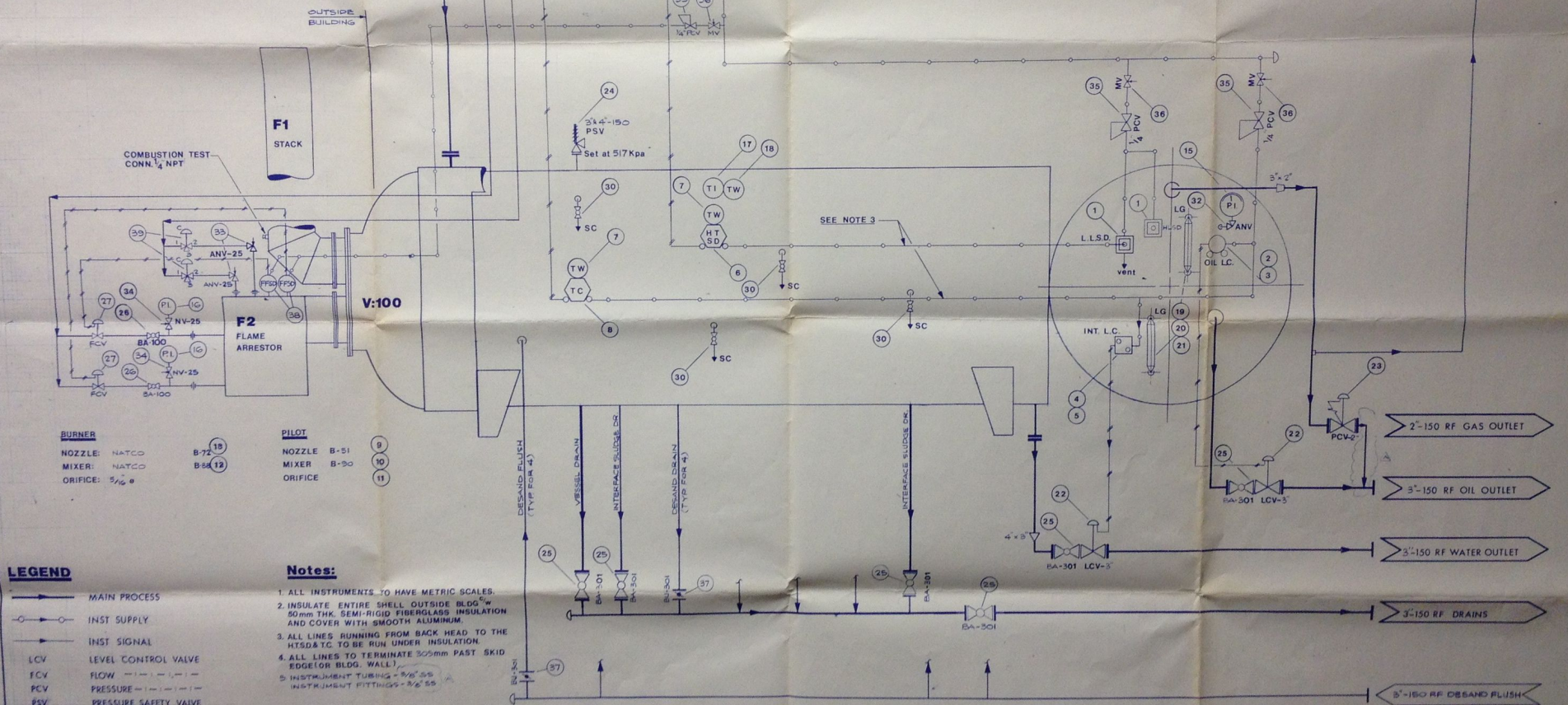
INTERNALLY COATED - VALSPAR 78

F:1: FIRETUBE

457 mm OD x 145 mm BTUH EACH
9/16" 570 mm LONG STACK

F:2: FLAME ARRESTOR

457 mm DIA. MATING FLG. x
1.5 mm BTUH EACH

**BURNER**

NOZZLE: NATCO
MIXER: NATCO
ORIFICE: 5/16"

PILOT

NOZZLE: B-51
MIXER: B-50
ORIFICE: 1/16"

LEGEND

—	MAIN PROCESS
—○—	INST SUPPLY
—○—	INST SIGNAL
LCV	LEVEL CONTROL VALVE
FCV	FLOW
PCV	PRESSURE
PSV	PRESSURE SAFETY VALVE
ANV	ANGLE NEEDLE VALVE
NV	NEEDLE VALVE
BA	BALL VALVE
PL	PLUG VALVE
MV	MINI NEEDLE VALVE
BV	BUTTERFLY VALVE

Notes:

1. ALL INSTRUMENTS TO HAVE METRIC SCALES.
2. INSULATE ENTIRE SHELL OUTSIDE BLDG W/ 50 mm THK. SEMI-RIGID FIBERGLASS INSULATION AND COVER WITH SMOOTH ALUMINUM.
3. ALL LINES RUNNING FROM BACK HEAD TO THE HTSD & TC TO BE RUN UNDER INSULATION.
4. ALL LINES TO TERMINATE 305 mm PAST SKID EDGE (OR BLDG. WALL).
5. INSTRUMENT TUBING = 9/16" SS. INSTRUMENT FITTINGS = 3/8" SS.

DESIGNED BY	DATE	REVISION	DESCRIPTION	DESIGNED BY	DATE	REVISION	DESCRIPTION	MECHANICAL AND PROCESS FLOWSHEET FOR A 2438 mm OD HORIZONTAL-HFH-FWKQ	SHOP FAB NO. 9401-01
DRN	10/1/85	1	BAR OUT DUMPED TO SKID & AS NOTED	DRN	10/1/85	1	BAR OUT DUMPED TO SKID & AS NOTED	NATCO CANADA	9401-01
CHKD	10/1/85	1	BAR OUT DUMPED TO SKID & AS NOTED	CHKD	10/1/85	1	BAR OUT DUMPED TO SKID & AS NOTED	CALGARY, ALBERTA, CANADA	
APP'D	10/1/85	1	BAR OUT DUMPED TO SKID & AS NOTED	APP'D	10/1/85	1	BAR OUT DUMPED TO SKID & AS NOTED		
REVISED				REVISED					