

MARK	NO.	SIZE	TYPE	RATE	EXT. DIA.	HEAD SIZE	DESCRIPTION
C1	2	1/2"	CPLG	3000	FULL	—	PRESSURE INDICATORS
C2	2	1/2"	CPLG	3000	FULL	—	TEMPERATURE INDICATORS
C3	2	1/2"	CPLG	3000	FULL	—	TEMPERATURE CONTROLLERS
C4	1	1/2"	CPLG	3000	FULL	—	HIGH TEMPERATURE SHUT DOWN
C5	6	1/2"	CPLG	3000	FULL	—	SAME LINE CONNECTIONS
C6	1	1/2"	CPLG	3000	FULL	—	FIREFIRE LOW LEVEL SHUT DOWN
C7	1	1/2"	CPLG	3000	FULL	—	HIGH LEVEL SHUT DOWN
C8	2	1/2"	CPLG	3000	FULL	—	LEVEL GLASS
C9	2	1/2"	CPLG	3000	FULL	—	INTERFACE PROBE (2.0 OPTION)
C10	2	1/2"	CPLG	3000	FULL	—	EXTERNAL FLIGHT CONNECTIONS
C11	1	1/2"	CPLG	3000	FULL	—	GAS SWANER INLET
C12	1	1/2"	CPLG	3000	FULL	—	DESAND WATER INLET
M1	1	1/2"	FAB	—	—	—	TREATING COMPARTMENT MANWAY
N1	1	1/2"	FAB	—	—	—	FIREFIRE COMPARTMENT MANWAY
N2	1	1/2"	FAB	—	—	—	FIREFIRE NOZZLE
N3	1	1/2"	FAB	—	—	—	REFER TO FIREFIRE DRAWING

GENERAL NOTES

DESIGN DATA: Design press. 517 KPa, Working temp. 173°C, Limited by SWELL, Long joint eff. 0.85, Shell/head jt. eff. 1.0, Corrosion allow. 1.6mm

JOB NUMBER: 25P31, Design temp. 173°C, Working temp. 173°C, Hydro test 159 KPa, X-ray 100%, Heat treat 100%, Service WATER - OIL - GAS

MATERIAL DATA: Heads: des. thk. 5.9mm, thk. used 6.35mm, type 221 S.E. 82-HW-70, Shell: des. thk. 6.2mm, thk. used 6.35mm, type 221 S.E. 82-HW-70

Flange material SA-106-J, SA-516-70, pipe material SMLS SA-516-70, Welded fitting SA-234-WPB, tubes NIL

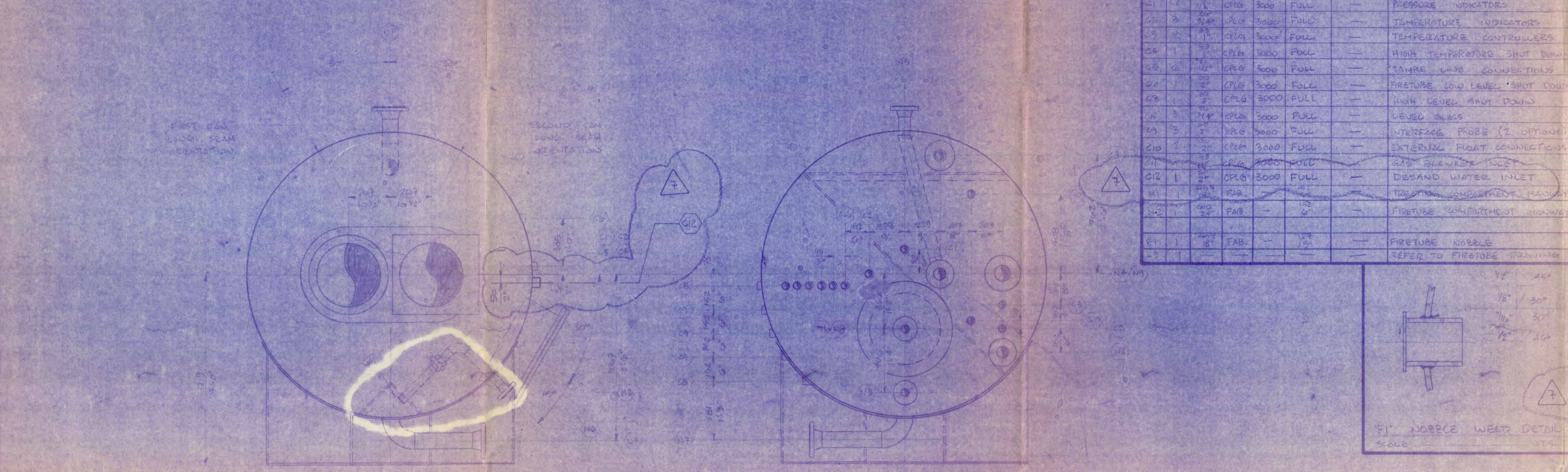
Non pressure material SA-516-70, 4-76

Couplings SA-106-J, WOL, OIL, TOL, NIL

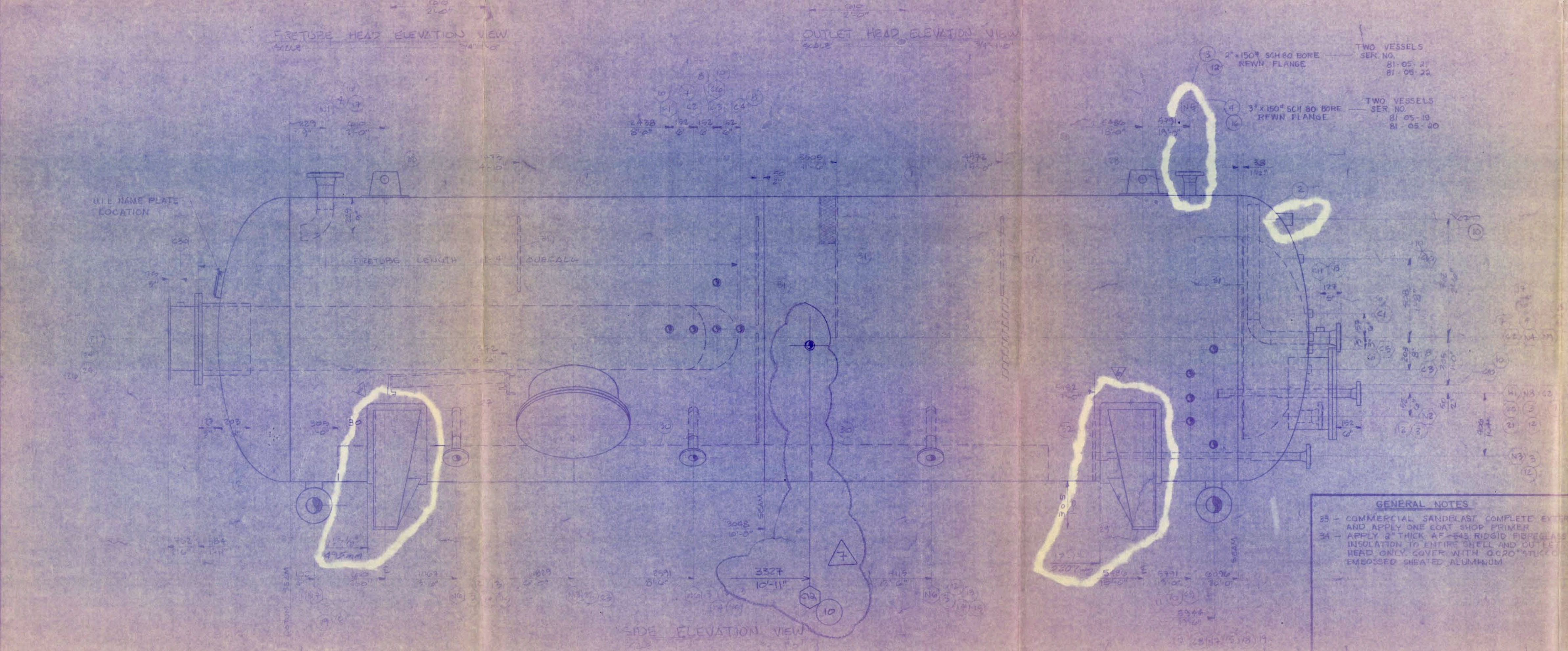
Stud bolts SA-193-B7, nuts SA-193-CH, gasket 3mm 2-170 ASPROX

Paint ONE COAT SHOP APPLIED PRIMER, insulation SEE NOTE #34

CONSTRUCTION: 1977 ASME code 180 SECTION VIII DIVISION 1 PARAGRAPH UW-12(b), Province of ALBERTA, CASE, add. codes LATEST, APPENDIX, Weight 5897 Kg, 13,000 LBS, lbs. volume 10 CU.M., 560 CU.F.T., CRN. E-200-23, mfg. ser. no. 81-09-21, Cust. order no. drawing no. 51201, SHEETS 1 OF 4, WRS. employed WRS. #2, WRS. #3 BRANCH No.



MARK	AMOUNT	DESCRIPTION	MATERIAL
1	2	2" x 100" SCH 80 FLANGES	SA-106-J
2	2	2" x 100" SCH 80 FLANGES	SA-106-J
3	7	2" x 100" SCH 80 FLANGES	SA-106-J
4	2	2" x 100" SCH 80 FLANGES	SA-106-J
5	3	2" x 100" SCH 80 FLANGES	SA-106-J
6	3	2" x 100" SCH 80 FLANGES	SA-106-J
7	3	2" x 100" SCH 80 FLANGES	SA-106-J
8	4	2" x 100" SCH 80 FLANGES	SA-106-J
9	1	2" x 100" SCH 80 FLANGES	SA-106-J
10	8	2" x 100" SCH 80 FLANGES	SA-106-J
11	2	2" x 100" SCH 80 FLANGES	SA-106-J
12	1	2" x 100" SCH 80 FLANGES	SA-106-J
13	3	2" x 100" SCH 80 FLANGES	SA-106-J
14	2	2" x 100" SCH 80 FLANGES	SA-106-J
15	3	2" x 100" SCH 80 FLANGES	SA-106-J
16	1	2" x 100" SCH 80 FLANGES	SA-106-J
17	2	2" x 100" SCH 80 FLANGES	SA-106-J
18	1	2" x 100" SCH 80 FLANGES	SA-106-J
19	2	2" x 100" SCH 80 FLANGES	SA-106-J
20	1	2" x 100" SCH 80 FLANGES	SA-106-J
21	1	2" x 100" SCH 80 FLANGES	SA-106-J
22	1	2" x 100" SCH 80 FLANGES	SA-106-J
23	1	2" x 100" SCH 80 FLANGES	SA-106-J
24	1	2" x 100" SCH 80 FLANGES	SA-106-J
25	1	2" x 100" SCH 80 FLANGES	SA-106-J
26	1	2" x 100" SCH 80 FLANGES	SA-106-J
27	1	2" x 100" SCH 80 FLANGES	SA-106-J
28	1	2" x 100" SCH 80 FLANGES	SA-106-J
29	2	2" x 100" SCH 80 FLANGES	SA-106-J
30	3	2" x 100" SCH 80 FLANGES	SA-106-J
31	4	2" x 100" SCH 80 FLANGES	SA-106-J
32	1	2" x 100" SCH 80 FLANGES	SA-106-J



NO.	DATE	DESCRIPTION	BY	APP'D
1	JUNE 29/81	CHANGE SIZE OF NOZZLES "C10"	W.A.	
2	JULY 02/81	CHANGES AS INDICATED	W.A.	
3	JULY 03/81	CHANGE SIZE OF NOZZLE "N5"	W.A.	
4	SEPT 25/81	CHANGE SIZE OF NOZZLE "C7"	G.R.	
5	OCT 22/81	CHANGE SIZE OF NOZZLE "C2" & "N5"	S.K.	
6	JAN 21/82	REVERSE DESAND OUTLET PIPING - TO BE LOCATED 1' 1/2" N. DESAND PAD	E.A.	
7	B9-11-23	ADD NOZZLE "C12"	W.A.	

GENERAL NOTES

23 - COMMERCIAL SANDBLAST COMPLETE EXTERIOR AND APPLY ONE COAT SHOP PRIMER

34 - APPLY 3" THICK AF-545 RIGID FIBREGLASS INSULATION TO ENTIRE SHELL AND OUTLETS. HEED ONLY COVER WITH 0.020" STUCK EMBOSSED SHEATED ALUMINUM

UNIVERSAL INDUSTRIES LTD

P.O. BOX 1590, LLOYDMINSTER ALTA.

DESIGNER: MUSHKY, TEST TREATERS @ DEVONIA LAKE

DESIGN SIZE: 1827mm O.D. x 2096mm I.D.

DESIGN DATA: 517 KPa @ 173°C, 25 P31 @ 250°F

Drawing no. 51201