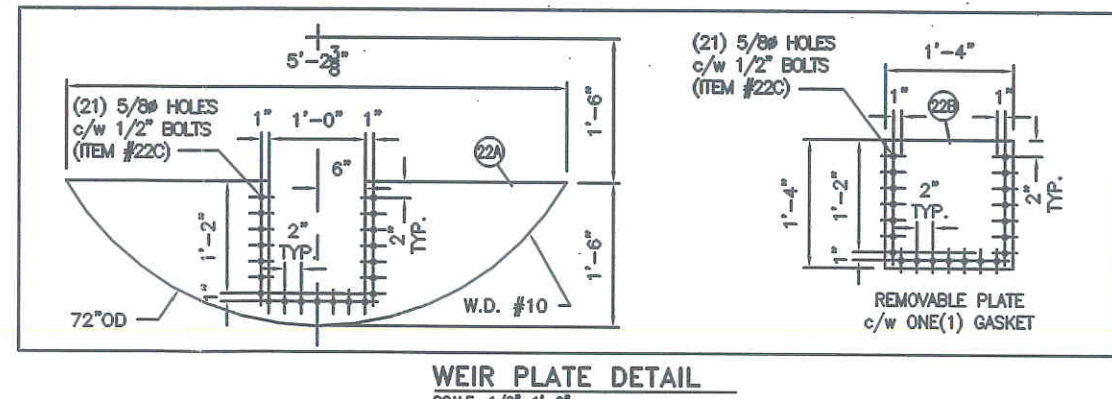
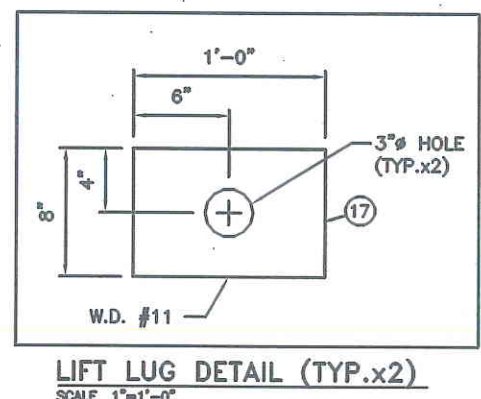
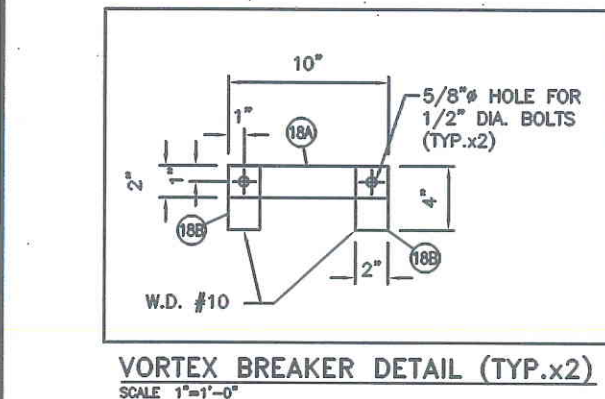


BILL OF MATERIALS			
MARK	QTY.	DESCRIPTION	MATERIAL
6A	2	SADDLE: WEAR PLATE: 3/8"THK x 12" WIDE x 7'-7" LONG, ROLLED TO 78"ID	SA-516-70N
6B	2	SADDLE: LEG PLATE: 1/2"THK x 7'-2 1/4" WIDE x 5'-9 3/4" HIGH - (SEE DETAIL)	SA-36
6C	2	SADDLE: RIB PLATE: 1/2"THK x 7 1/2" WIDE x 4'-2" HIGH	SA-36
6D	2	SADDLE: BASE PLATE: 1"THK x 10" WIDE x 5'-10 1/4" LONG	SA-36
17	2	LIFT LUG: 2"THK PLATE x 12" LONG x 8" HIGH - (SEE DETAIL)	SA-516-70N
18A	2	VORTEX BREAKER: REMOVABLE FLAT BAR: 3/8"THK x 10" LONG x 2" WIDE - (SEE DETAIL)	SA-36
18B	4	VORTEX BREAKER: FLAT BAR: 3/8"THK x 4" LONG x 2" WIDE - (SEE DETAIL)	SA-36
22A	1	WEIR PLATE: 3/8"THK x 5'-2 3/8" LONG x 1'-6" HIGH - (SEE DETAIL)	SA-36
22B	1	REMOVABLE WEIR PLATE: 3/8"THK x 1'-4" LONG x 1'-4" HIGH - c/w ONE(1) GASKET (SEE DETAIL)	SA-36
22C	21	BOLTS: 1/2"DIA. x 1 3/4" LG c/w ONE(1) HEX HEAD NUT & ONE(1) WASHER EA.	316 SS

GENERAL NOTES

- THE FOLLOWING MATERIAL MAY BE UPGRADED: PLATE FROM SA-36 TO SA-516-70N
- MAWP EQUALS DESIGN PRESSURE.
- TOLERANCE SPECS AS PER DWG: DMV-2002TOL REV.0
- ALL SA-516-70N MAT'L IS FINE GRAIN PRACTICE.
- CRN REFERENCE DRAWING: PES-72H-1440 REV.1
- WPS: PESI-1sr



Issued For Construction

Issued to Fab. Manager JAN 27 2010

Released for Fabrication JAN 27 2010

LAST SAVED ON: Thursday, January 14, 2010 2:00:48 PM by Jay enell
PRINTED ON: Thursday, January 14, 2010 2:34:01 PM

STAMPS & APPROVALS										Paintearth				CONOCOPHILLIPS			
DESIGNED BY	PES	DATE	08/03/02	CLIENT	CONOCOPHILLIPS	DESIGNED BY	PES	DATE	08/03/02	CLIENT	CONOCOPHILLIPS	DESIGNED BY	PES	DATE	08/03/02	CLIENT	CONOCOPHILLIPS
DRAWN BY	PES	DATE	08/03/02	TITLE	HORIZONTAL SEPARATOR - DETAILS	DRAWN BY	PES	DATE	08/03/02	TITLE	HORIZONTAL SEPARATOR - DETAILS	DRAWN BY	PES	DATE	08/03/02	TITLE	HORIZONTAL SEPARATOR - DETAILS
CHECKED BY	PES	DATE	08/03/02	PROJECT NO.	0000324	CHECKED BY	PES	DATE	08/03/02	PROJECT NO.	0000324	CHECKED BY	PES	DATE	08/03/02	PROJECT NO.	0000324
APPROVED BY	PES	DATE	08/03/02	SHEET NO.	2 OF 2	APPROVED BY	PES	DATE	08/03/02	SHEET NO.	2 OF 2	APPROVED BY	PES	DATE	08/03/02	SHEET NO.	2 OF 2
1	NO	0	10-01-14	ISSUED FOR CONSTRUCTION	JS	1	NO	0	10-01-14	ISSUED FOR CONSTRUCTION	JS	1	NO	0	10-01-14	ISSUED FOR CONSTRUCTION	JS
1	YES	A	09-12-06	ISSUED FOR APPROVAL	JS	1	YES	A	09-12-06	ISSUED FOR APPROVAL	JS	1	YES	A	09-12-06	ISSUED FOR APPROVAL	JS
CALC	PKG	REV.	LEVEL	REV.	CALCS	REQ'D	NO.	DATE	REVISIONS	DWN	DD	PC	QC	CALC	PKG	REV.	LEVEL