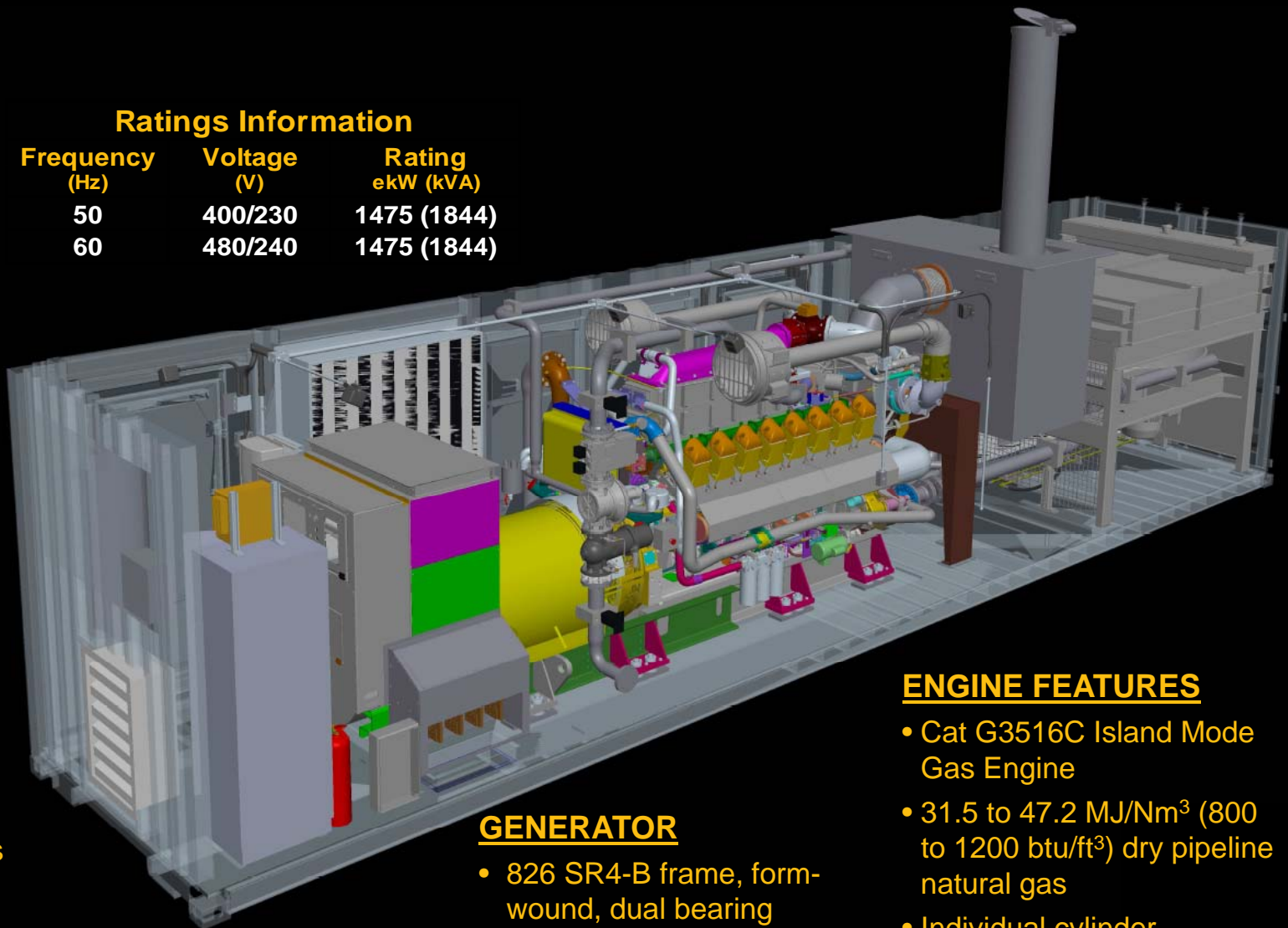


XQ1475G

Ratings Information

Frequency (Hz)	Voltage (V)	Rating ekW (kVA)
50	400/230	1475 (1844)
60	480/240	1475 (1844)



POWER DISTRIBUTION

- 3200A IEC rated 3 pole breaker
- VFD drive
- Shore Power connections
 - Battery Charger
 - 9kW, 480V JW Heater
 - Generator space heater
 - Convenience receptacles
 - 240V transformer
- Convenient customer and buss bar connections access

CONTAINER

- Stowable awnings on engine room inlets*
- LH and RH personnel doors
- Dual service doors centered along engine
- Methane detection

GENERATOR

- 826 SR4-B frame, form-wound, dual bearing
- 6-lead design
- Direct leads to power distribution panel
- Re-greasable bearings
- ClassH insulation
- Anti-condensation heaters
- System 4 insulation protection

ENGINE FEATURES

- Cat G3516C Island Mode Gas Engine
- 31.5 to 47.2 MJ/Nm³ (800 to 1200 btu/ft³) dry pipeline natural gas
- Individual cylinder detonation sensing
- 60A charging alternator
- Dual 24VDC electric starting motors
- 24VDC prelube pump
- Oil and fuel filter access
- SOS sampling ports

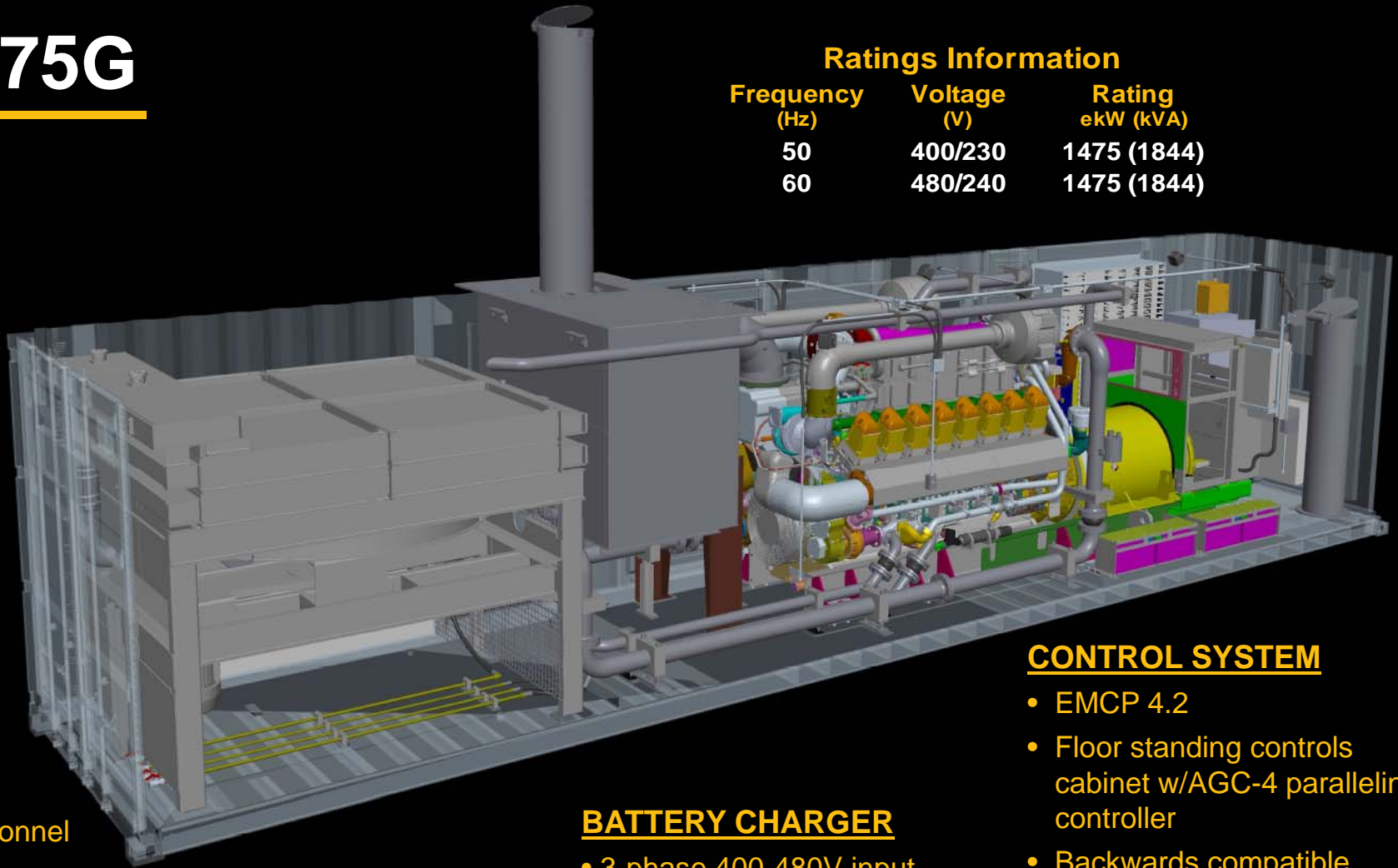
*Removable for applications w/o 480V shore power available to allow for improved post shutdown engine room ventilation

Caterpillar Confidential: **YELLOW**

XQ1475G

Ratings Information

Frequency (Hz)	Voltage (V)	Rating ekW (kVA)
50	400/230	1475 (1844)
60	480/240	1475 (1844)



CONTAINER

- E-stops at personnel doors
- 3" flange customer fuel connection (ANSI) w/lockable door
- 4" sound attenuation throughout (72 dB(A) at 15 meters per SAE J1074)
- Literature storage

BATTERIES

- Four (4) 1400 CCA maintenance-free
- Walkover grating and cover

BATTERY CHARGER

- 3-phase 400-480V input
- 20A, 24 VDC output
- Float/equalize modes and charging ammeter

CONTROL SYSTEM

- EMCP 4.2
- Floor standing controls cabinet w/AGC-4 paralleling controller
- Backwards compatible
- 50/60 Hz switchable
- IPP Plant Control wiring port
- PL1000E
- Engine advisor panel
- Utility grade Basler BE1-11i utility multi-function relay (N. America only)
- CDVR voltage regulator

XQ1475G

COOLING SYSTEM

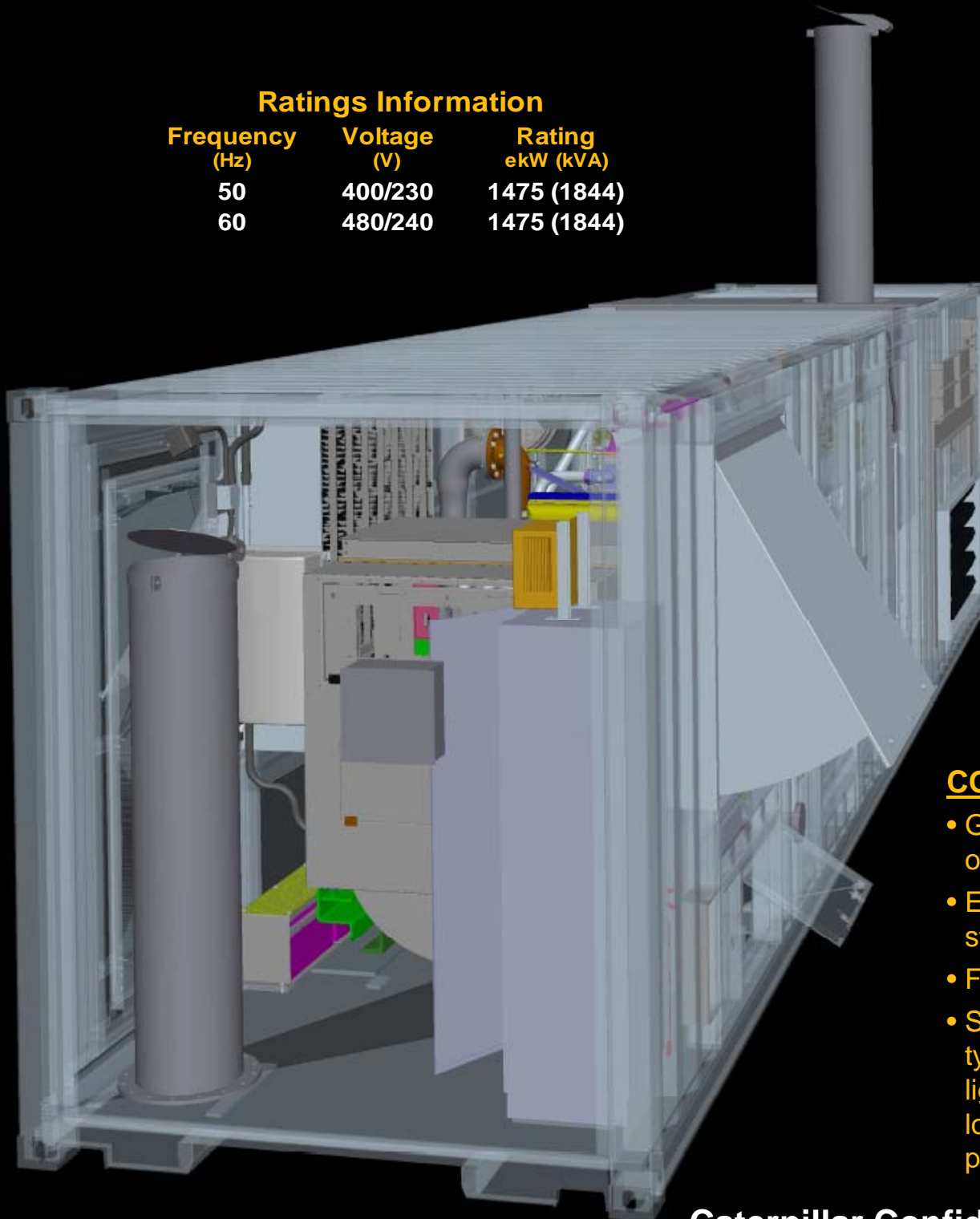
- Horizontal stacked JW and SCAC cores
- Improved motor serviceability
- Maintenance free drive system
- Low coolant level detection
- High efficiency, low noise aluminum fan
- 40C (104F) ambient capability at 500 mg/Nm³ NOx (1g/hp-hr) before derate

OIL MAKE-UP TANK

- 115-L Capacity
- Dipstick
- Low level alarm

Ratings Information

Frequency (Hz)	Voltage (V)	Rating ekW (kVA)
50	400/230	1475 (1844)
60	480/240	1475 (1844)



CONTAINER

- Grounding lugs at opposite ends
- Exhaust stack storage for shipping
- Fire extinguisher
- Six (6) compact LED type internal DC lights with timers located at each personnel door

Caterpillar Confidential: **YELLOW**

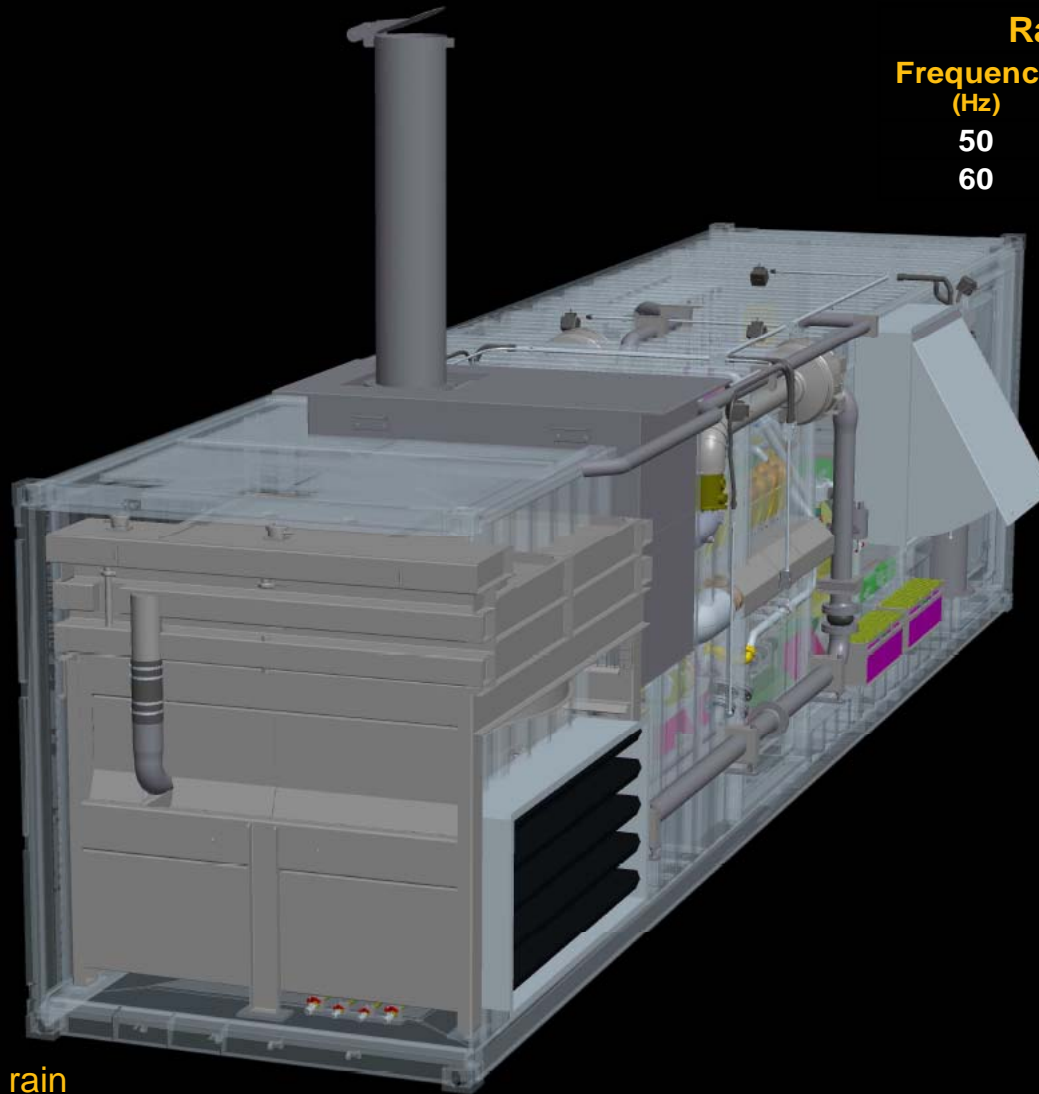
XQ1475G

FUEL SYSTEM

- Full, internally mounted gas train
- Container inlet pressure requirement 3-7 psi (0.21 kg/cm² - 0.49 kg/cm²)

EXHAUST SYSTEM

- Internally insulated muffler w/single 2m SSTL stack and rain cap
- Sound paneling for sound & thermal management
- Crankcase fumes plumbed to muffler
- Crankcase ventilation system w/coalescing canister and drain



Ratings Information

Frequency (Hz)	Voltage (V)	Rating kW (kVA)
50	400/230	1475 (1844)
60	480/240	1475 (1844)

CONTAINER

- Double doors on both container ends
- Grounding pads
- 110% engine fluids spill containment basin
- Attachment points for generator removal
- Air inlet louver for generator specific cooling

DOGHOUSE

- Global design with common, easy controls and breaker access and viewing
- Electrical components located on sub-panels