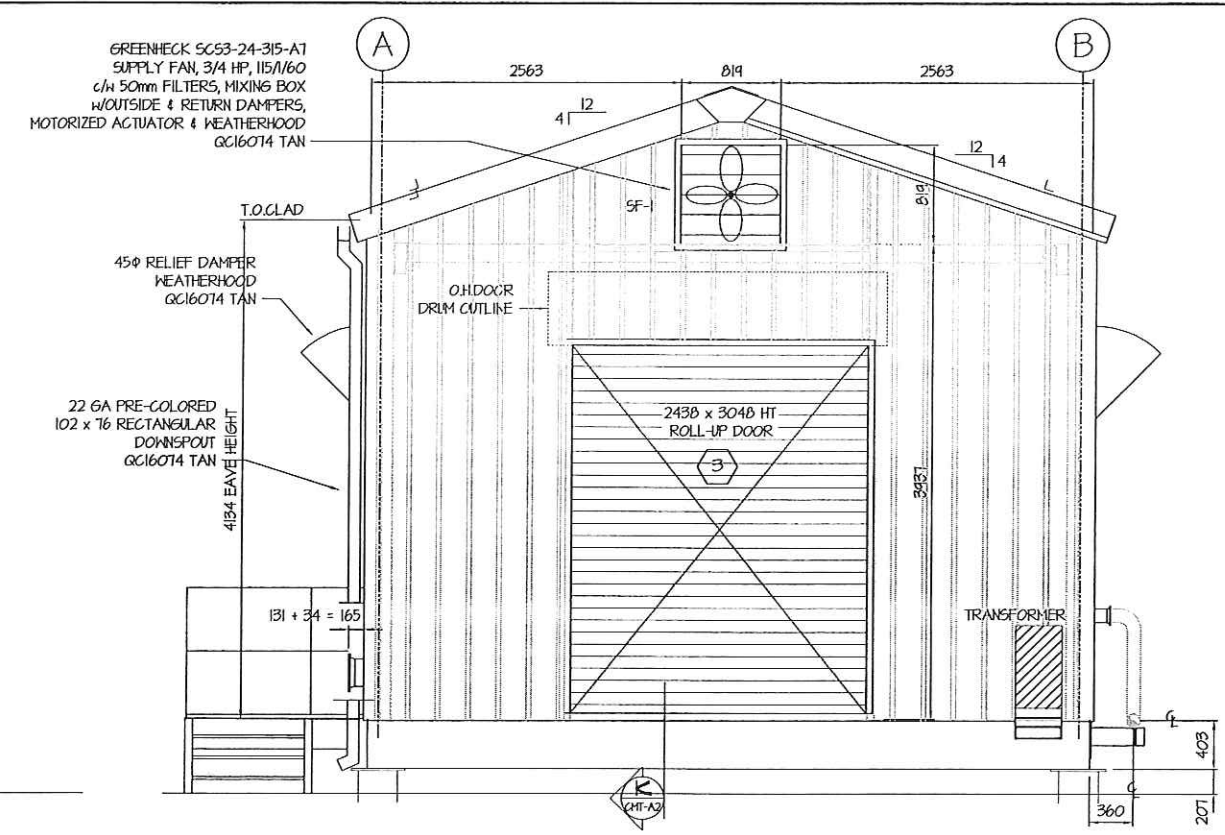
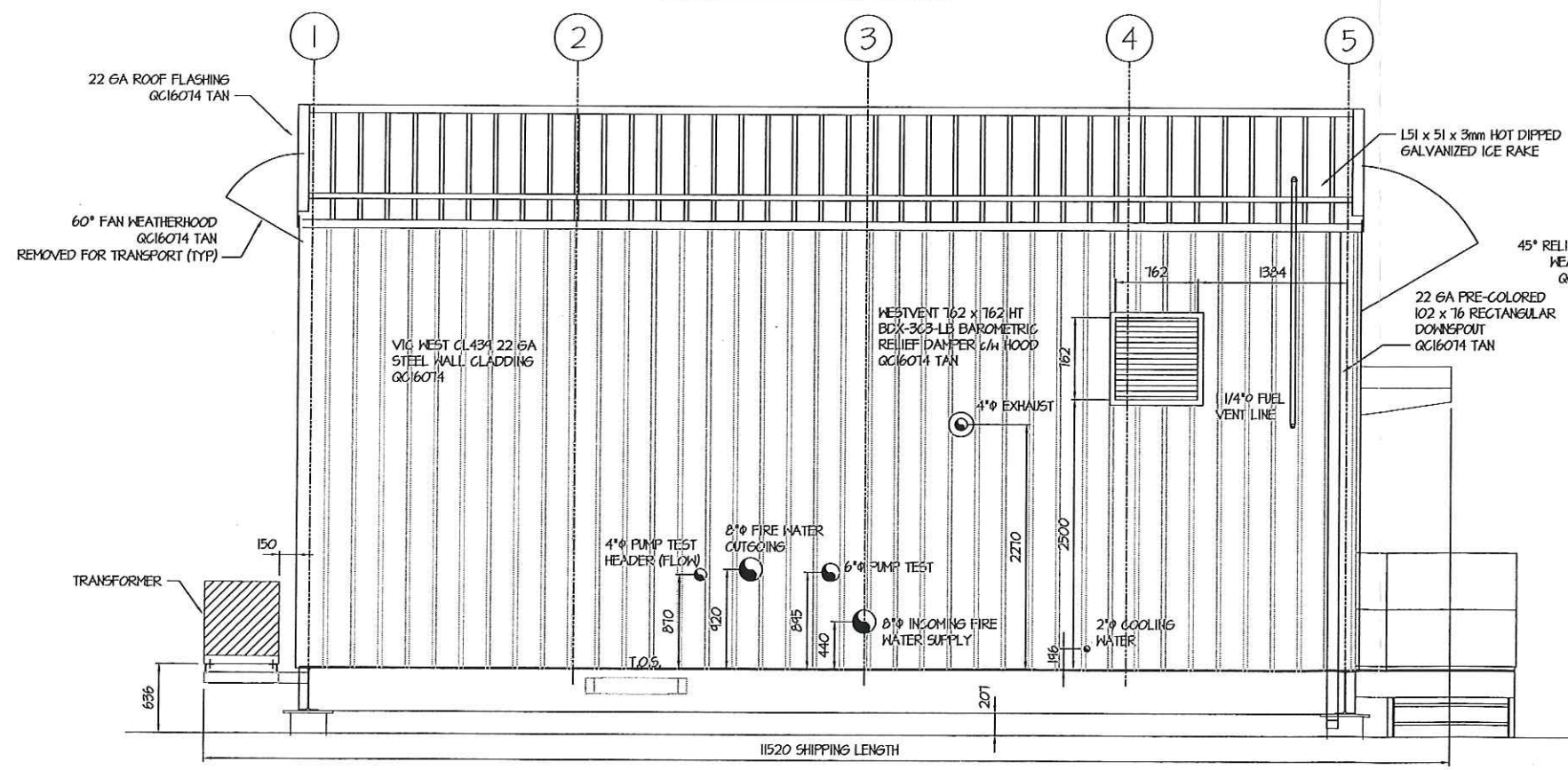


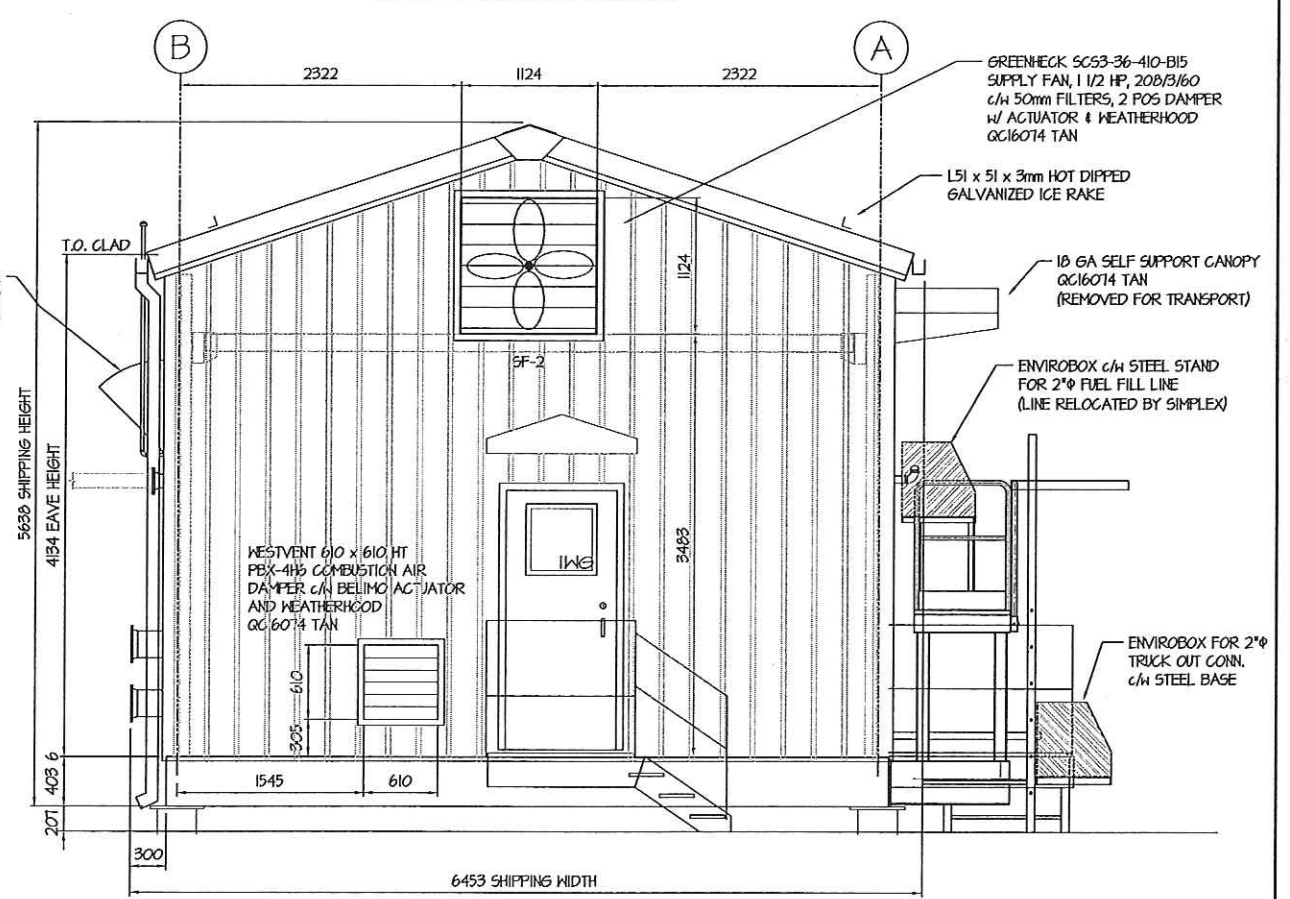
SOUTH ELEVATION



EAST ELEVATION



NORTH ELEVATION



WEST ELEVATION

NOTES SHIPPING DIMENSIONS SHIPPING HEIGHT - 5638mm (18'-6") SHIPPING WIDTH - 6453mm (21'-2") SHIPPING LENGTH - 11520mm (37'-4 1/2")	DESIGN NOTES (ABC 2006) SNOW LOAD $S_s = 23 \text{ kPa (48.0 psf)}$ $S_e = 0.1 \text{ kPa (2.1 psf)}$ WIND LOAD $W_0 = 0.24 \text{ kPa (6.1 psf)}$ WIND LOAD $W_50 = 0.32 \text{ kPa (8.9 psf)}$ SEISMIC LOADS = $S_a(0.2) = 0.12, S_a(0.5) = 0.06$ $S_a(1.0) = 0.02, S_a(2.0) = 0.04, PFA = 0.06$ FLOOR LIVELOADS - ASSIGNED 1.2 kPa	BRYTEX CERTIFIED 'AS BUILT' DATE: FEB 13/15 BY: ASP	PERMIT STAMPS BRYTEX APEGGA PERMIT NUMBER: P 6050 THE BRYTEX ENGINEER'S SEAL AND SIGNATURE ARE REQUIRED ON THE ORIGINAL DRAWING FOR ALL DOCUMENTS. NO DESIGN CHANGES WILL BE MADE TO THIS DRAWING WITHOUT THE APPROVAL OF A REGISTERED ENGINEER. 2015 FEB 13	NO. 1 REVISION DATE JUN 12/14 BY JLM CHK ASP	PROJECT SIMPLEXGRINNELL LP SHELL CARMON CREEK PROJECT FIELD FACILITIES & INFRASTRUCTURE - PHASE 1 & 2 DRAWING CMT FIREWATER PUMP PACKAGE BUILDING ELEVATIONS	SCALE 1:30 DRAWN JLM DATE MAY 22/14 JOB NO. 2242-14C DWG. NO. CMT-A4
				NO. 2 REVISION DATE JUN 24/14 BY JLM CHK ASP		
				NO. 3 REVISION DATE JUL 1/14 BY JLM CHK ASP		
				NO. 4 REVISION DATE SEPT 12/14 BY JLM CHK ASP		
				NO. 5 REVISION DATE NOV 20/14 BY JLM CHK ASP		
NO. 6 REVISION DATE FEB 10/15 BY ASP CHK JLM	NO. 7 REVISION DATE BY CHK					