

AS BUILT

4"2500# RTJ
HP COIL
SCH. XXH PIPING
MAWP 4785 PSIg
c/w 0.0983" C.A.
12 PASSES

DWG No. PES-4NPS-HT REV.2

NOTES:

1. 100% X-RAY
2. PWHT, 1150°F FOR 60 MIN
3. X-RAY TO B31.3 SEVERE
4. DESIGNED & FABRICATED TO ASME CODE B31.3
5. LONG RADIUS ELBOWS
6. HYDROTEST: COIL 'A' TO 7177 PSIG @ 0.0983" C.A.
7. OVERALL LENGTH 352"
8. HEATING SURFACE 414.5 SQ.FT
9. HEATING VOLUME 19 CU.FT.

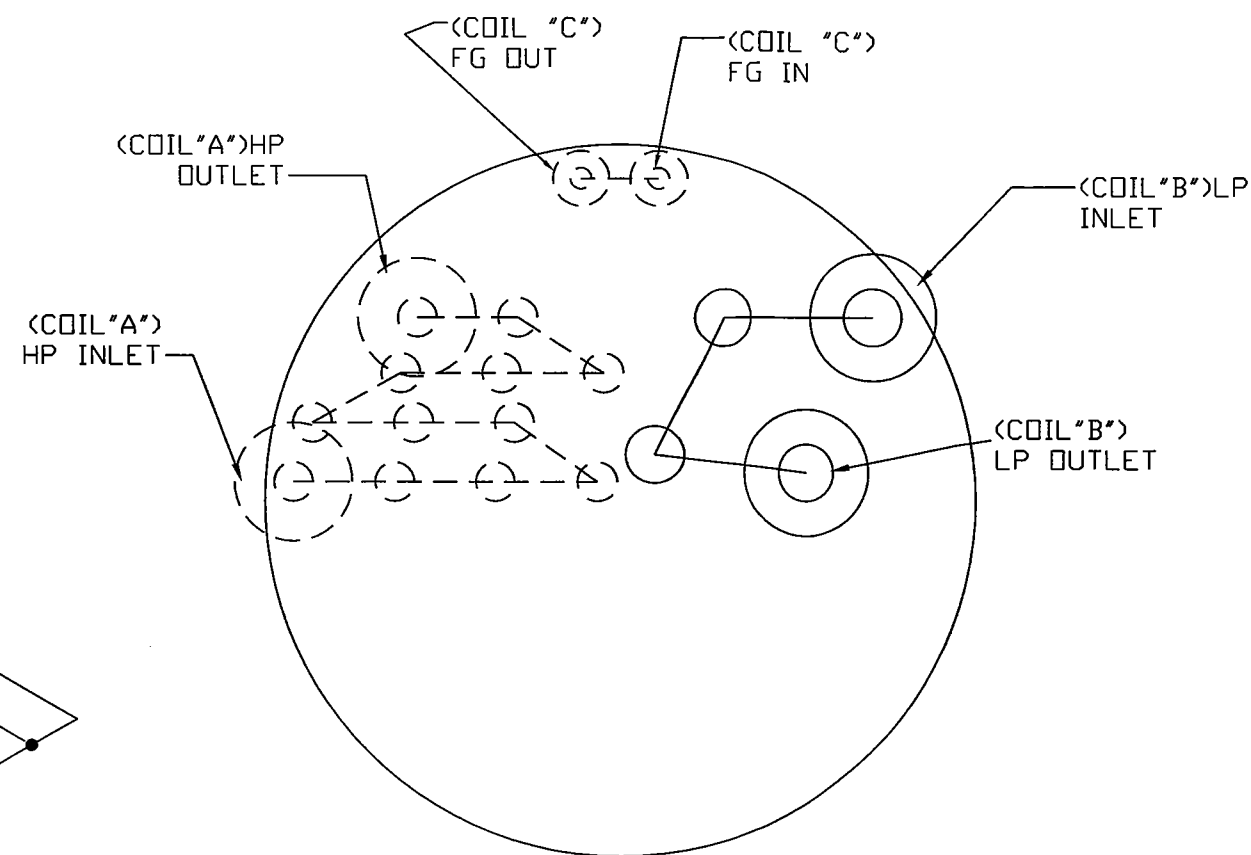
DESIGN DATA

DESIGN AND FABRICATE TO ASME B 31.3 2004 EDITION
MIN. DESIGN METAL TEMP. -20°F
MAX. DESIGN METAL TEMP. 257°F
CORROSION ALLOWANCE: 0.0983"
IMPACT TESTS; EXCEPT PER 323.2.2
COLUMN A1

[illegible]

Paintearth
ENERGY SERVICES INC.

DATE 07-01-05	CLIENT BURLINGTON RESOURCES c/o SPEC ENGINEERING INC. LSD: 04-34-52-28 W5N			
DESIGNED BY PES	TITLE <u>DRAWING FOR 4"</u> <u>3,750,000 BTUH LINEHEATER COILS c/w 0.0983" C.A.</u>			
DRAWN BY C.PRICHARD				
CHECKED BY <i>CW</i>				
APPROVED BY	PROJECT NO. 6119-001	FILENAME 6119-002A	REFERENCE NO. U0194.2	
SCALE NTS	SHEET NO. 1 OF 3	DRAWING NO. C-6119-002A		REV. NO. <div style="border: 1px solid black; padding: 2px; display: inline-block;">2</div>



AS BUILT

6"900# RFWN
LP COIL
SCH. 80 PIPING
MAWP 1575 PSIg
c/w 1/8" C.A.
4 PASSES

DWG No. PES-6NPS-HT REV.2

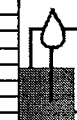
NOTES:

1. 100% X-RAY
2. PWHT, 1150°F FOR 60 MIN
3. X-RAY TO B31.3 SEVERE
4. DESIGNED & FABRICATED TO ASME CODE B31.3
5. LONG RADIUS ELBOWS
6. HYDROTEST: COIL 'B' TO 2362 PSIG @ 1/8" C.A.
7. OVERALL LENGTH 118'.
8. HEATING SURFACE 204.5 SQ.FT.
9. HEATING VOLUME 21.3 CU.FT.

PIPE SA-106B SMLS
FLANGES AND TOL'S ARE SA-105N
WELDED FITTINGS TO BE SA-234-WPB
WPS: PESI-1sr COIL 'B'



DESIGN DATA

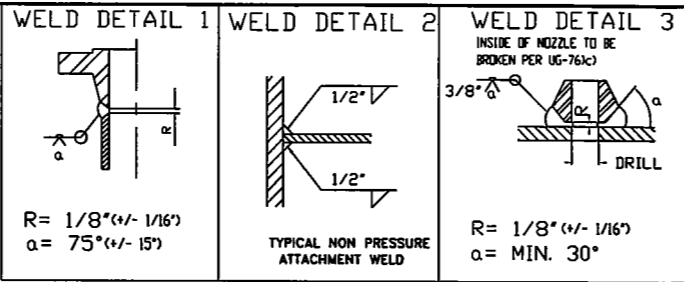
DESIGN AND FABRICATE TO ASME B 31.3 2004 EDITION
MIN. DESIGN METAL TEMP. -20°F
MAX. DESIGN METAL TEMP. 257°F
CORROSION ALLOWANCE: 1/8"
IMPACT TESTS: EXEMPT PER 323.2.2
COLUMN A1

[illegible]

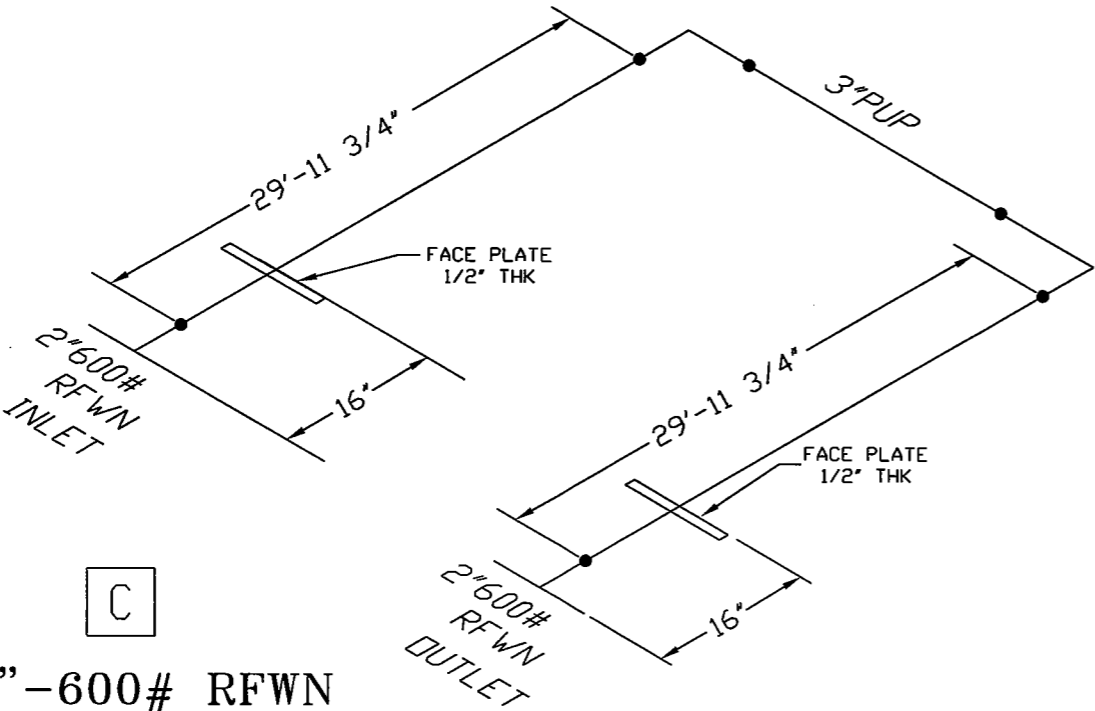
Paintearth

ENERGY SERVICES INC.

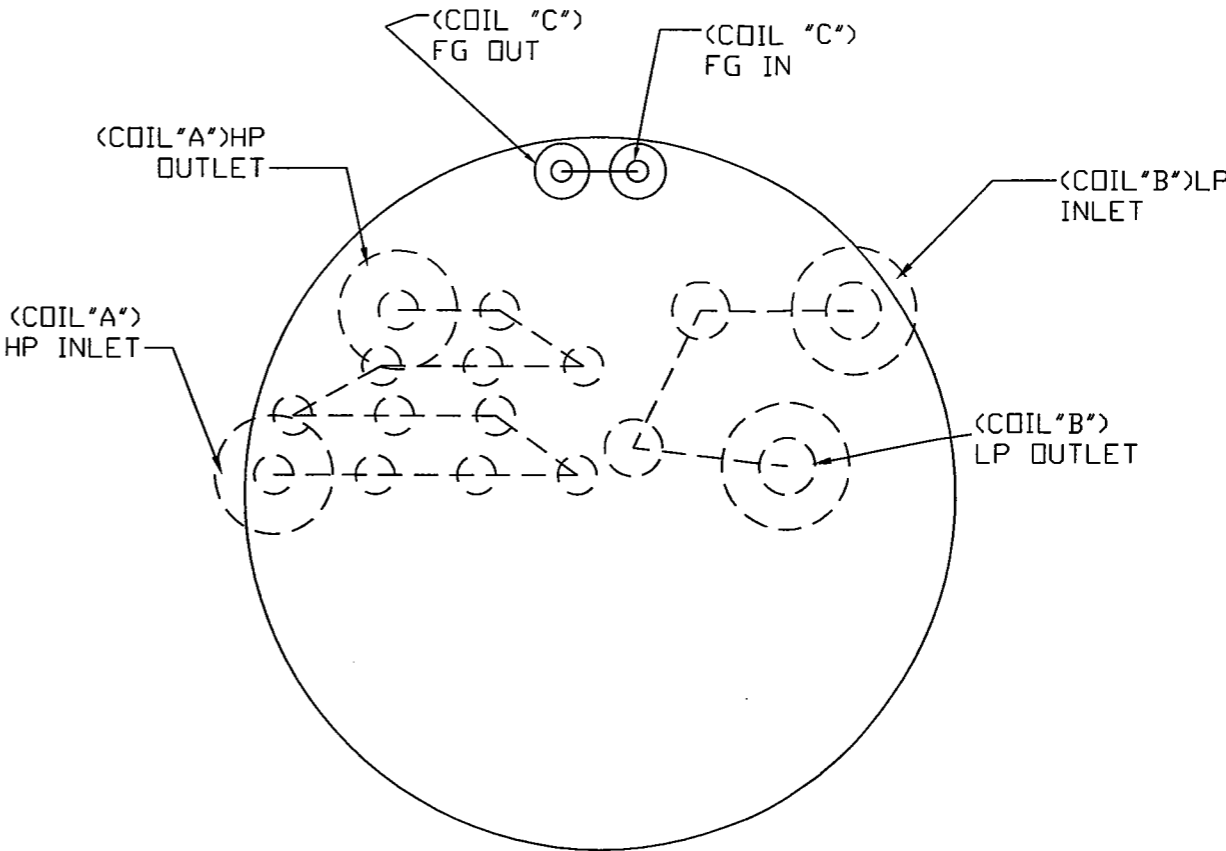
DATE 07-01-05	CLIENT BURLINGTON RESOURCES c/o SPEC ENGINEERING INC. LSD: 04-34-52-26 W5M		
DESIGNED BY PES	TITLE DRAWING FOR 6" 3.750.000 BTUH LINEHEATER COILS c/w 1/8" C.A.		
DRAWN BY C.PRICHARD			
CHECKED BY 			
APPROVED BY	PROJECT NO. 6119-001	FILENAME 6119-002B	REFERENCE NO. U0193.2
SCALE NTS	SHEET NO. 2 OF 3	DRAWING NO. C-6119-002B	REV. NO. 



WPS: PESI-1sr



2"-600# RFWN
LP COIL
SCH. 80 PIPING
MAWP 1330 PSIG
c/w 1/16" C.A.



AS BUILT

DWG No. PES-2NPS-HT REV.1

- NOTES:
1. 100% X-RAY
 2. PWHT, 1150°F FOR 60 MIN
 3. X-RAY TO B31.3 SEVERE
 4. DESIGNED & FABRICATED TO ASME CODE B31.3
 5. LONG RADIUS ELBOWS
 6. HYDROTEST: COIL 'C' TO 1995 PSIG @ 1/16" C.A.
 7. OVERALL LENGTH 61'
 8. HEATING SURFACE 37.9 SQ.FT.
 9. HEATING VOLUME 1.25 CU.FT.

PIPE SA-106B SMLS
FLANGES AND TOL'S ARE SA-105N
WELDED FITTINGS TO BE SA-234-WPB
WPS: PESI-1sr COIL 'C'

DESIGN DATA
DESIGN AND FABRICATE TO ASME B 31.3 2004 EDITION
MIN. DESIGN METAL TEMP. -20°F
MAX. DESIGN METAL TEMP. 257°F
CORROSION ALLOWANCE: 1/16"
IMPACT TESTS: EXEMPT PER 323.2.2
COLUMN A1

0	NO	1	AS BUILT	AL	CHP	RS	07-03-30
0	NO	0	ISSUED FOR CONSTRUCTION	AL	CHP	RS	07-02-28
0	NO	A	ISSUED FOR APPROVAL	CP	CHP	RS	07-01-05
CALC/PKG REV/LEVEL	REV.CALCS REQ'D	NO	REVISION	BY	DD	QC	APP. DATE

Paintearth
ENERGY SERVICES INC.

DATE 07-01-05	CLIENT BURLINGTON RESOURCES c/o SPEC ENGINEERING INC. LSD: 04-34-52-26 W5M
DESIGNED BY PES	TITLE DRAWING FOR 2' 3,750,000 BTUH LINEHEATER COILS c/w 1/16" C.A.
DRAWN BY C.PRICHARD	PROJECT NO. 6119-001
CHECKED BY [Signature]	FILENAME 6119-002C
APPROVED BY	REFERENCE NO. U0196.2
SCALE NTS	SHEET NO. 3 OF 3
	DRAWING NO. C-6119-002C
	REV. NO. [Symbol]