

BH-160
ELECTRIC HEATER
5KW FX4
460/3/60 Hz
W/ THERMOSTAT

P-160
CHARGE PUMP
GRUNDFOSS
MODEL: CRN32-2-1
120GPM @ 50PSI

M-160
WEG CHARGE PUMP MOTOR
RATED: 7.5HP @ 1,200 RPM
230/460/3/60 Hz TEFC

F-161
THREE P2 BAG FILTER
150 PSI @ -20~+300 F
CRN: AB, BC, SK
4"-150# CONNECTIONS

P-161
TRIPLEX PLUNGER PUMP
FMC 1220 (RECONDITIONED)
PLUNGER: TBD
30 TO 124 GPM

M-161
TRIPLEX PUMP MOTOR
RATED: 60 HP @ 1,780 RPM
480/3/60 Hz
TEFC, VFD RATED

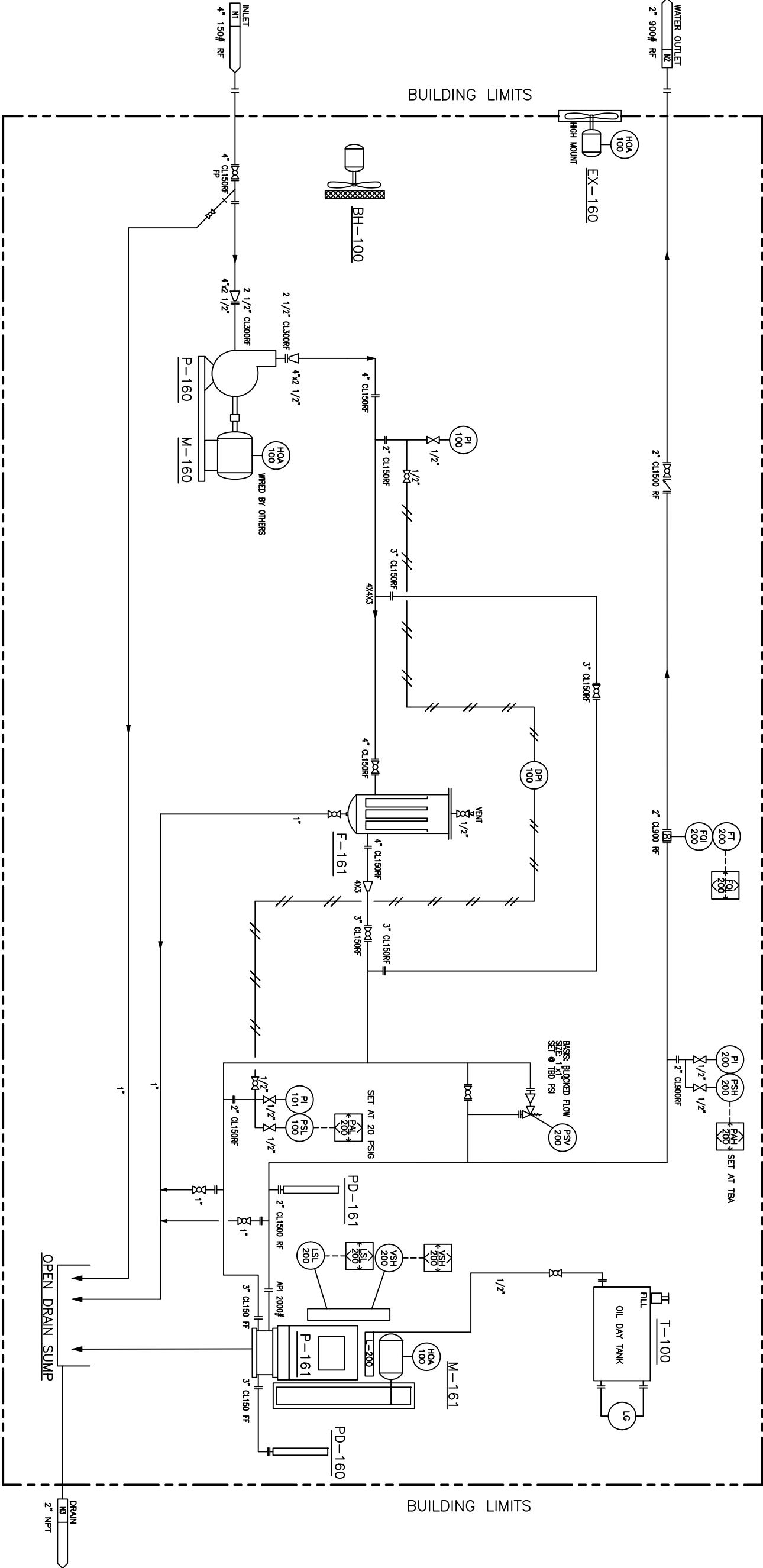
PD-160
SUCTION PULSATION
STABILIZER
COORDSTEK
300 CUBIC INCHES
ST-1503-F
CRN: AB, BC

PD-161
DISCHARGE PULSATION
STABILIZER
COORDSTEK
300 CUBIC INCHES
S-35402-F
CRN: AB, BC

L-200
PACKING LUBRICATOR LINCOLN
3 FEED, 1/4" PLUNGERS
BELT DRIVE
55G/LN TANK/STAND

T-100
LUBE OIL DAY
TANK
KENCO

EX-160
EXHAUST FAN
120/1/60 Hz



INSTRUMENT TABLE		
ITEM#	TAG#	DESCRIPTION
1	PI-100/101	0-150 PSIG GAUGE 4" LIQUID FILL BOTTOM MOUNT DUAL SCALE
2	DPI-100	0-30 PSIG DIFF. RANGE S.S.
3	PSL-100	CCS 6900 GZE 14 SET FALLING TO 172 KPA (20 PSI).
4	PI-200	0-3,000 PSIG GAUGE 4" LIQUID FILL BOTTOM MOUNT DUAL SCALE
5	PSH-200	CCS646PE21 GZE 22 SET RISING TO TBD
6	FQ/FT-200	NU-FLO 2"x2" EZ-IN TURBINE C/W MC-III TOTALIZER

NOTES:
1: BUILDING CLASS 1 ZONE 2,
2: FLOW METER SHALL HAVE 10 PIPE DIAMETER STRAIGHT RUN UPSTREAM
AND 5 PIPE DIAMETER DOWN STREAM.
3: DPI TO HAVE ISOLATION VALVES ON THE INLET/OUTLET.

CRUSADER ENERGY SERVICES

400-909-17 Ave. SW Calgary, AB. T2T-0A4. 1-403-263-8040

TITLE: CRUSADER ENERGY
60HP WATER TRANSFER PACKAGE
PROCESS AND INSTRUMENTATION DIAGRAM

DRAWING NO. CES-068-PID-001

REV. 0