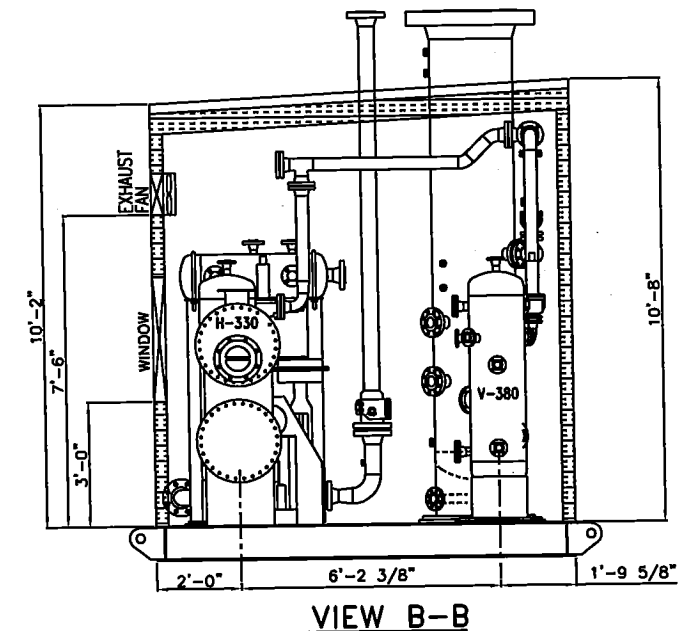


## BUILDING DETAILS

- ROOF:
  - EXTERIOR: 22 Ga, G-90, Gr. 37 (HARVEST GOLD QC276)
  - INTERIOR: 24 Ga WHITE ALUMINUM
  - INSULATION: R-20 FIBREGLASS
  - VAPOUR: 6 MILL POLY
- WALLS:
  - EXTERIOR: 22 Ga, G-90, Gr. 37 (HARVEST GOLD QC276)
  - INTERIOR: 24 Ga WHITE ALUMINUM
  - INSULATION: R-12 FIBREGLASS
  - VAPOUR: 6 MILL POLY
- TRIM & FLASHING: 22 Ga, G-90, Gr. 37 (METRO BROWN QC228)
- (2) 3'-0" x 7'-0" INSULATED MAN DOOR c/w
  - PANIC HARDWARE & LOCK SET
  - SINGLE GLAZED FIXED I.W.G GLAZING WINDOW
  - WEATHERSTRIPPING, CANOPY, THRESHOLD & CHECK CHAIN
  - DOOR RAISED 2" TO ACCOMMODATE DRIP LIP
- (1) 38" x 36" DOUBLE GLAZED SLIDING WINDOW c/w SCREEN
- (2) 12" x 12" ADJUSTABLE LOUVRES c/w SCREEN & WEATHERHOOD
- (1) ET12-4 WALL MOUNTED EXPLOSION PROOF FANS c/w STORM HOOD
  - 1/4hp, 120 VOLT, SINGLE PHASE, 60 Hz
- EAVESTROUGH & DOWNSPOUTS: NIL
- EAVE ICE RAKES: NIL
- TOTAL PACKAGE SHIPPING WEIGHT: 35,000 LBS
- SHIPPING DIMENSIONS: 11'-6" W x 13'-2" H x 20'-6" LG



REV. NO.	DATE	REVISION	BY	APP'D
A	06/19/09	ISSUED FOR APPROVAL	JAH	
B	07/02/09	REVISED AS PER CLIENT REQUEST	JAH	JAM
0	07/09/09	ISSUED FOR FABRICATION	JAH	JAM
1	09/11/09	ADDED 3" DRAIN HEADER	JAH	JAM
2	09/18/09	REVISED PSV PIPING	JAH	JAM
3	09/17/09	AS BUILT	JAH	

**BILTON**

Welding & Manufacturing Ltd.

This drawing is property of BILTON WELDING & MANUFACTURING LTD and is loaned to the recipient for their confidential use only. In consideration of the loan of this drawing, the recipient promises and agrees that it shall not be used in any way detrimental to the interests of BILTON WELDING & MANUFACTURING LTD, that it shall be returned upon request, and shall not be reproduced, copied, loan, or otherwise disposed of, directly or indirectly, without the written consent of BILTON WELDING & MANUFACTURING LTD.

BOX 6106  
5815 37 Street  
INNISFAIR, AB  
CANADA  
403-227-7799  
1-888-227-4923  
FAX 227-7796

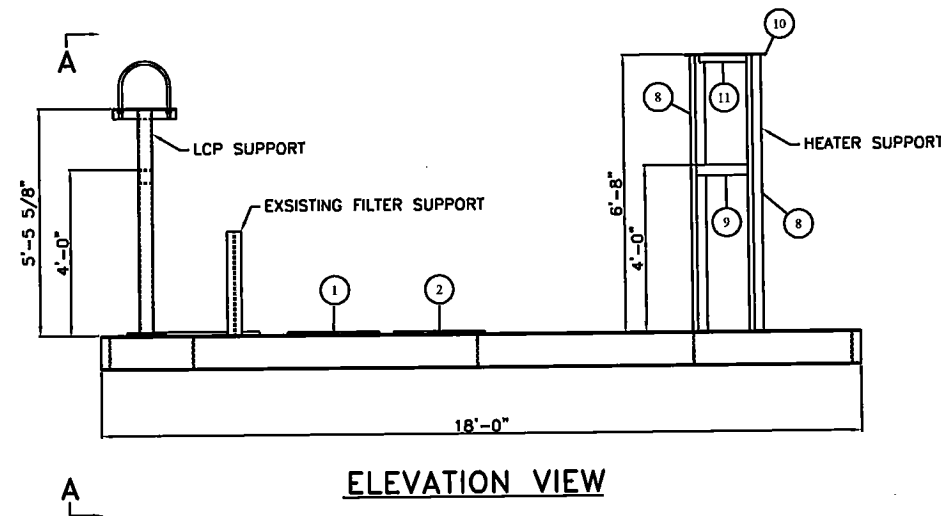
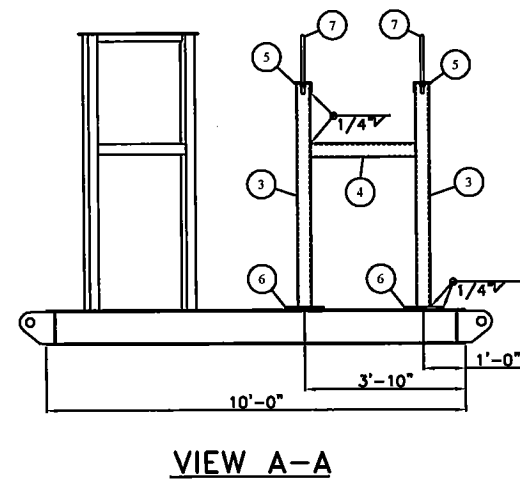
## HUSKY OIL OPERATIONS

WELLSITE DEHYDRATION FACILITY  
GENERAL ARRANGEMENT

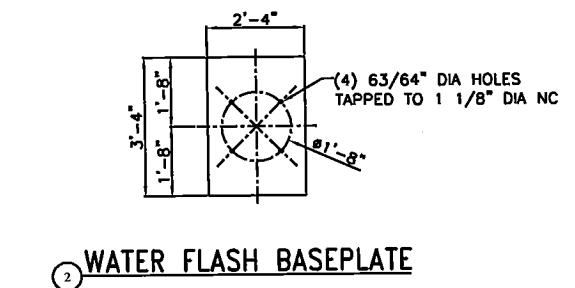
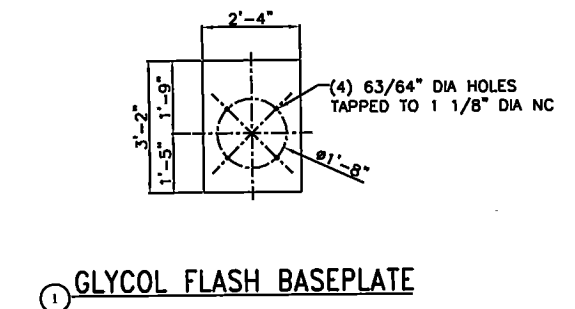
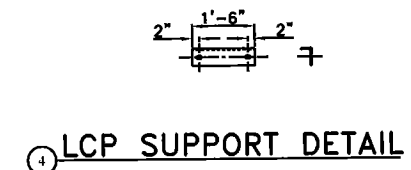
DATE: 06/18/09	SALE ORDER: 001399
SHEET: 1 OF 3	JOB ORDER: D0967
DRAWN BY: JAH	SIZE: D
PURCHASE ORDER: 08146-007	DRAWING NO.: C852-1
LOCATION: b-49-C/93-P-12	REV. 3
APP'D BY: JAH	

CERTIFIED  
AS BUILT

1. WELD PROCEDURE: MC-1
2. SANDBLAST TO SSPC-SP6 (COMMERCIAL)
3. PRIME: ONE COAT OF PRIMER
4. FINISH: ONE COATS OF INDUSTRIAL ENAMEL (GREY)
5. APPROXIMATE WEIGHT: 5,400 LBS



BILL OF MATERIALS						
ITEM	QTY	REF.	PART No.	DESCRIPTION	MATERIAL	WEIGHT
1	1	BASEPLATE	2-001069	3/4" THK x 2'-4" W x 3'-2" LG w/HOLES (SEE DETAIL)	SA-36	226#
2	1	BASEPLATE	2-001070	3/4" THK x 2'-4" W x 3'-4" LG w/HOLES (SEE DETAIL)	SA-36	238#
3	2	LCP SUPPORT	1-002524	4" x 0.375" WALL HSS x 5'-4 1/2" LG	G40.21-SOW	190#
4	1	LCP SUPPORT	1-002524	4" x 0.375" WALL HSS x 2'-6" LG	G40.21-SOW	44#
5	2	LCP SUPPORT	1-000045	5" x 3" x 3/8" THK ANGLE x 1'-6" LG w/ HOLES (SEE DETAIL)	G40.21-44W	30#
6	2	LCP SUPPORT	2-000559	3/4" THK x 10" W x 10" LG	SA-36	34#
7	2	LCP SUPPORT	1-004682	12" U-BOLT	-	-
8	2	HEATER SUPPORT	1-002516	3" x 0.250" WALL HSS x 6'-7 5/8" LG	G40.21-SOW	116#
9	1	HEATER SUPPORT	1-002516	3" x 0.250" WALL HSS x 2'-5" LG	G40.21-SOW	22#
10	1	HEATER SUPPORT	1-001120	3/8" THK x 6" W FLATBAR x 3'-0" LG w/ HOLES (SEE DETAIL)	SA-36	23#
11	1	HEATER SUPPORT	1-001114	3/8" THK x 2" W FLATBAR x 2'-5" LG	SA-36	7#



REV. NO.	DATE	REVISION	BY	APP'
A	07/02/09	ISSUED FOR APPROVAL	JAH	
0	07/09/09	ISSUED FOR FABRICATION	JAH	JAM
1	09/11/09	CHANGED LOCATION OF WATER FLASH BASEPLATE	JAH	JAM
2	09/17/09	AS BUILT	JAH	

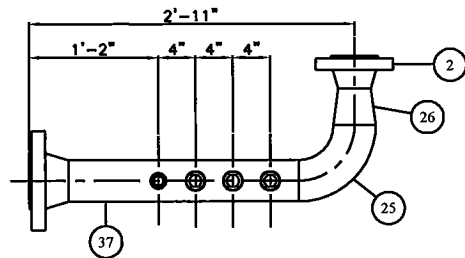
**BILTON**  
 BOX 6106  
 5815 37 Street  
 INNISFAIR, AB  
 CANADA  
 403-227-7799  
 1-888-227-4923  
 FAX 227-7796  
**Welding & Manufacturing Ltd.**

HUSKY OIL OPERATIONS			
WELLSITE DEHYDRATION FACILITY SKID DETAIL			
DATE: 07/02/09		SALE ORDER: 001399	
SHEET: 2 OF 3		JOB ORDER:	SIZE
DRAWN BY: JAH		D0967	D
PURCHASE ORDER: 08146-007		DRAWING NO.:	REV.
LOCATION: b-49-C/93-P-12			
APP'D BY: JAM		C852-2	2

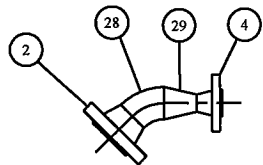
**CERTIFIED  
AS BUILT**

**FILE PATH:**

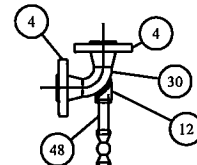
FILE PATH: \\MAINDATA\CAD\TANKS\0800-C852\C852-3



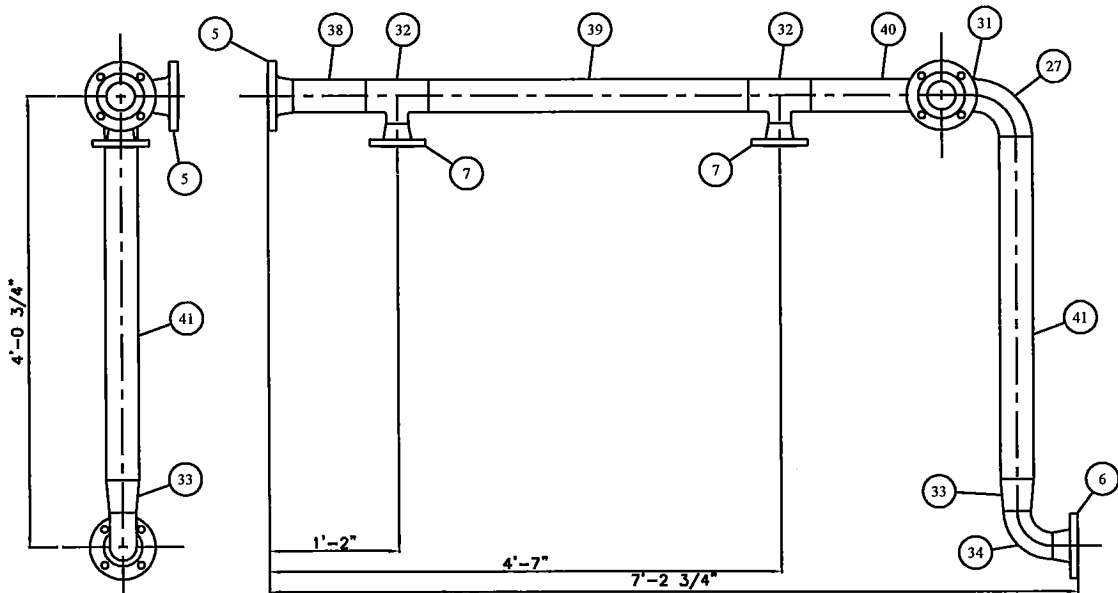
SPOOL 1



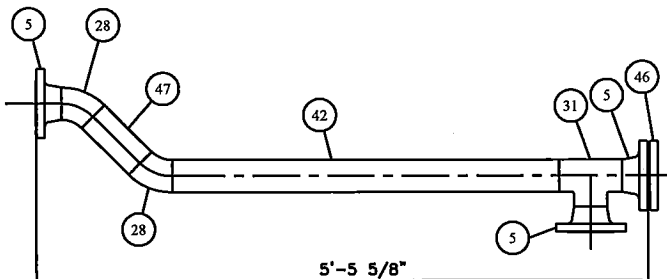
SPOOL 2



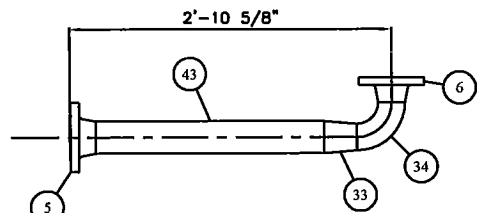
SPOOL 3



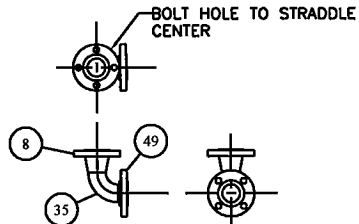
SPOOL 4



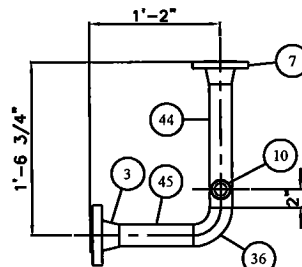
SPOOL 5



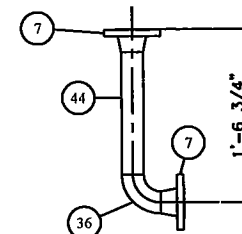
SPOOL 6



SPOOL 7  
(2) REQUIRED



SPOOL 8



SPOOL 9

### BILL OF MATERIALS

ITEM	QTY	REF.	PART No.	DESCRIPTION	MATERIAL	WEIGHT
1	1	-	1-000919	4" x CLASS 600 RFWN FLG SCH XH	SA-105-N	42#
2	2	-	1-000900	3" x CLASS 600 RFWN FLG SCH XH	SA-105-N	46#
3	1	-	1-000879	2" x CLASS 600 RFWN FLG SCH XH	SA-105-N	12#
4	3	-	1-008628	1 1/2" x CLASS 600 RFWN FLG SCH XXH	SA-105-N	30#
5	6	-	1-000898	3" x CLASS 150 RFWN FLG SCH XH	SA-105-N	60#
6	2	-	1-006166	2 1/2" x CLASS 150 RFWN FLG SCH XH	SA-105-N	16#
7	5	-	1-000877	2" x CLASS 150 RFWN FLG SCH XH	SA-105-N	30#
8	2	-	1-003970	1 1/2" x CLASS 150 RFWN FLG SCH XH	SA-105-N	8#
9	3	-	1-006134	1" on 4" x CLASS 3000 THREAD-O-LET	SA-105-N	3#
10	1	-	1-000853	1" on 2" x CLASS 3000 THREAD-O-LET	SA-105-N	1#
11	1	-	1-007396	3/4" on 4" x CLASS 3000 THREAD-O-LET	SA-105-N	1#
12	1	-	1-009066	1/2" on 2" x CLASS 3000 SW ELB-O-LET	SA-105-N	1#
13	4	-	1-008813	3" x CLASS 600 RF GRAPHITE FILLED "CG" FLEX GASKET B16.20	316SS	-
14	3	-	1-008802	1 1/2" x CLASS 600 RF GRAPHITE FILLED "CG" FLEX GASKET B16.20	316SS	-
15	4	-	1-001297	3" x CLASS 150 RF GRAPHITE FILLED "CG" FLEX GASKET B16.20	316SS	-
16	3	-	1-001292	2" x CLASS 150 RF GRAPHITE FILLED "CG" FLEX GASKET B16.20	316SS	-
17	4	-	1-003957	1 1/2" x CLASS 150 RF GRAPHITE FILLED "CG" FLEX GASKET B16.20	316SS	-
18	32	-	1-002647	3/4" DIA x 5" LG STUD	SA-193-B7M	-
19	12	-	1-002643	3/4" DIA x 4 1/4" LG STUD	SA-193-B7M	-
20	88	-	1-001872	3/4" DIA NUT	SA-194-2HM	-
21	28	-	1-002627	5/8" DIA x 3 1/2" LG STUD	SA-193-B7M	-
22	56	-	1-001868	5/8" DIA NUT	SA-194-2HM	-
23	16	-	1-003958	1/2" DIA x 2 3/4" LG STUD	SA-193-B7M	-
24	32	-	1-001865	1/2" DIA NUT	SA-194-2HM	-
25	1	-	1-000700	4" x 90° LR BW ELBOW SCH XH	SA-234-WPB	13#
26	1	-	1-000455	4" x 3" CONCENTRIC REDUCER SCH XH	SA-234-WPB	8#
27	1	-	1-000689	3" x 90° LR BW ELBOW SCH XH	SA-234-WPB	9#
28	3	-	1-000688	3" x 45° LR BW ELBOW SCH XH	SA-234-WPB	32#
29	1	-	1-008814	3" x 1 1/2" CONCENTRIC REDUCER SCH XXH (SCARF 3" TO SCH XH)	SA-234-WPB	6#
30	1	-	1-008815	1 1/2" x 90° LR BW ELBOW SCH XXH	SA-234-WPB	4#
31	2	-	1-002979	3" TEE SCH XH	SA-234-WPB	24#
32	2	-	1-002976	3" x 2" RED TEE SCH XH	SA-234-WPB	24#
33	2	-	1-003902	3" x 2 1/2" CONCENTRIC REDUCER SCH XH	SA-234-WPB	6#
34	2	-	1-009067	2 1/2" x 90° LR BW ELBOW SCH XH	SA-234-WPB	9#
35	2	-	1-006167	1 1/2" x 90° LR BW ELBOW SCH XH	SA-234-WPB	4#
36	2	-	1-000676	2" x 90° LR BW ELBOW SCH XH	SA-234-WPB	3#
37	1	-	1-003369	4" PIPE SCH XH x 2'-0 1/2" LG (BBE)	SA-106-B	30#
38	1	-	1-003364	3" PIPE SCH XH x 7 5/8" LG (BBE)	SA-106-B	6#
39	1	-	1-003364	3" PIPE SCH XH x 2'-10" LG (BBE)	SA-106-B	29#
40	1	-	1-003364	3" PIPE SCH XH x 10 3/8" LG (BBE)	SA-106-B	18#
41	1	-	1-003364	3" PIPE SCH XH x 3'-0 1/2" LG (BBE)	SA-106-B	26#
42	1	-	1-003364	3" PIPE SCH XH x 3'-5 1/4" LG (BBE)	SA-106-B	50#
43	1	-	1-003364	3" PIPE SCH XH x 2'-0 3/8" LG (BBE)	SA-106-B	20#
44	2	-	1-003358	2" PIPE SCH XH x 1'-1" LG (BBE)	SA-106-B	16#
45	1	-	1-003358	2" PIPE SCH XH x 7 5/8" LG (BBE)	SA-106-B	4#
46	1	-	1-009068	3" x CLASS 150 HUB BLIND FLG, BORED TO 1.9625" ID	SA-105-N	10#
47	1	-	1-003364	3" PIPE SCH XH x 6 7/8" LG (BBE)	SA-106-B	6#
48	1	-	1-003341	1/2" PIPE SCH 160 x 4" LG (CBE)	SA-106-B	1#
49	2	-	1-005814	1 1/2" x CLASS 150 RFSW FLG SCH XH	SA-105-N	10#

### GENERAL NOTES

- BUILT AS PER ASME B31.3 & HUSKY PIPING SPEC'S ASH & CSH
- DESIGN SPECIFICATIONS:
  - SEE LINE DESIGNATION CHARTS
- IMPACT TESTS EXEMPT AS PER FIG.323.2.2A
- WELD PROCEDURES:
  - ROOT: BWM-16 (GMAW)
  - FILL & CAP: BWM-16 (SMAW)
  - PWHT: YES
- PWHT:
  - HEAT FROM AMBIENT TO 800°F AT A MODERATE RATE
  - HEAT FROM 800°F TO 1150°F AT 400°F/Hr MAX
  - SOAK AT 1150°F FOR 60 MIN
  - COOL TO 800°F AT 500°F/Hr MAX
  - FROM 800°F AIR COOL IN FURNACE
- HARDNESS TESTING:
  - (TO BE PERFORMED ON 10% OF SOUR SERVICE PIPING ONLY)
  - 3 POINT TRAVERSE ON (1) WELD, (1) HAZ & (1) PARENT METAL
  - HARDNESS NOT TO EXCEED 210 HV
- EXTERNAL SANDBLAST: SSPC-SP6 (COMMERCIAL)
- EXTERNAL FINISH:
  - PRIME: ONE (1) COAT SHOP PRIMER
  - PAINT: ONE (1) COAT INDUSTRIAL ENAMEL (WARM GREY)
- ALL BOLT HOLES TO STRADDLE CENTERLINE
- FABRICATION TOLERANCES AS PER BILTON DWG#: TOL2002
- HYDROTEST PRESSURE TO BE HELD FOR A MINIMUM OF ONE HOUR

### LINE DESIGNATION CHART

LINE	PIPING SPEC	PROCESS	DESIGN PRESS. (kPa)	DESIGN TEMP. (°C)	TEST PRESS. (kPa)	MATERIAL & GRADE	DIAMETER & SCHEDULE	FLANGE RATING	RT (%)	TEST MEDIUM	CORROSION ALLOWANCE	PWHT REQ'D
SPOOL 1	CSH	GAS TO METERING SKID	10,210	-29/38	15,340	SA-106-B SA-105-N SA-234-WPB	4" SCH XH 3" SCH XH	600	100%	WATER	1/8"	SEE NOTE # 5
SPOOL 2&3	CSH	PSV INLET	10,210	-29/38	15,340	SA-106-B SA-105-N SA-234-WPB	3" SCH XH 1 1/2" SCH XXH	600	100%	WATER	1/8"	SEE NOTE # 5
SPOOL 4-9	ASH	PSV OUTLET	1,960	-29/38	3,102	SA-106-B SA-105-N SA-234-WPB	3" SCH XH 2 1/2" SCH XH 1 1/2" SCH XH	600 150	100%	WATER	1/8"	SEE NOTE # 5

REV. NO.	DATE	REVISION	BY	APP'D
0	07/09/09	ISSUED FOR FABRICATION	JAH	JAM
1	08/19/09	REVISED PSV SPOOLING	DSG	JAM
2	08/28/09	REVISED PSV SPOOLING	JAH	JAM
3	09/17/09	AS BUILT	JAH	

**BILTON**  
Welding & Manufacturing Ltd.  
BOX 6106  
5815 37 Street  
INNISFAIR, AB  
CANADA  
403-227-7799  
1-888-227-4923  
FAX 227-7796

This drawing is property of BILTON WELDING & MANUFACTURING LTD and is to be used only in connection with the job shown. The recipient agrees that it shall not be used for any other purpose without the written consent of BILTON WELDING & MANUFACTURING LTD.

**HUSKY OIL OPERATIONS**  
WELLSITE DEHYDRATION FACILITY  
SPOOLING DETAIL

DATE: 07/09/09  
SHEET: 3 OF 3  
DRAWN BY: JAH  
PURCHASE ORDER: 08146-007  
LOCATION: b-49-C/93-P-12  
APP'D BY: JAM

SALE ORDER: 001399  
JOB ORDER: D0967  
DRAWING NO.: C852-3  
REV. 3

CERTIFIED  
AS BUILT