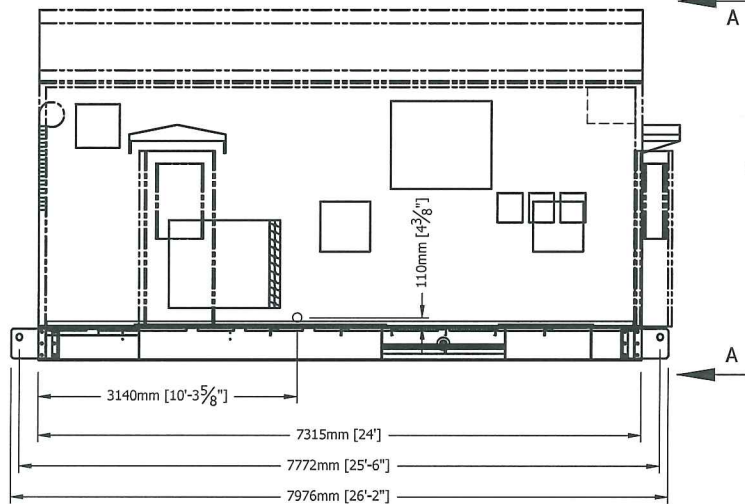
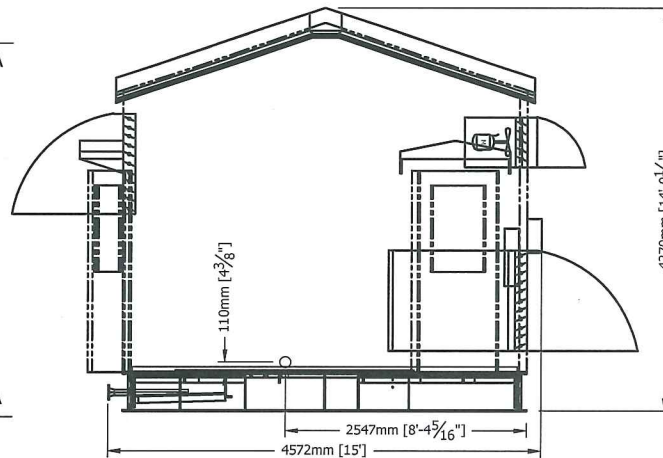


PLAN VIEW



ELEVATION VIEW



ELEVATION VIEW A-A

GENERAL NOTES

1. ALL DIMENSIONS ARE IN INCH [mm] U.N.O.
2. TOTAL APPROXIMATE PACKAGE WEIGHT: 37004LBS (167851Kg)
3. TOTAL PACKAGE LENGTH = 7976mm [26'-2"]
4. TOTAL PACKAGE WIDTH = 4572mm [15']
5. TOTAL PACKAGE HEIGHT = 4270mm [14'-01/8"]

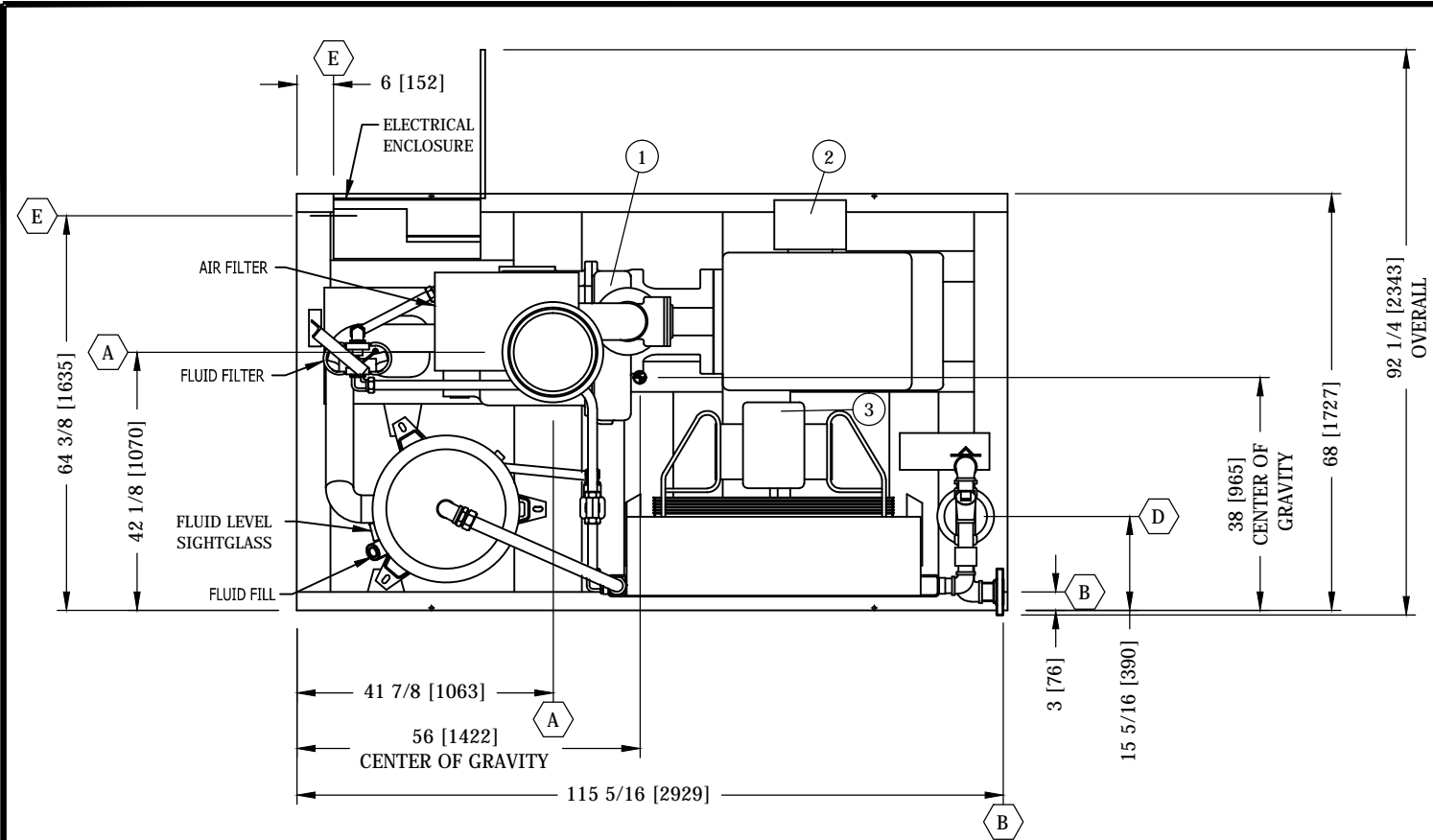
REV	DESCRIPTION	OWN	CHK	APP	DATE
0	ISSUED FOR RELEASE	GW	AJ	AS	MAR 20/14

INSTRUMENT AIR COMPRESSOR PACKAGE
LIFTING POINT ILLUSTRATION

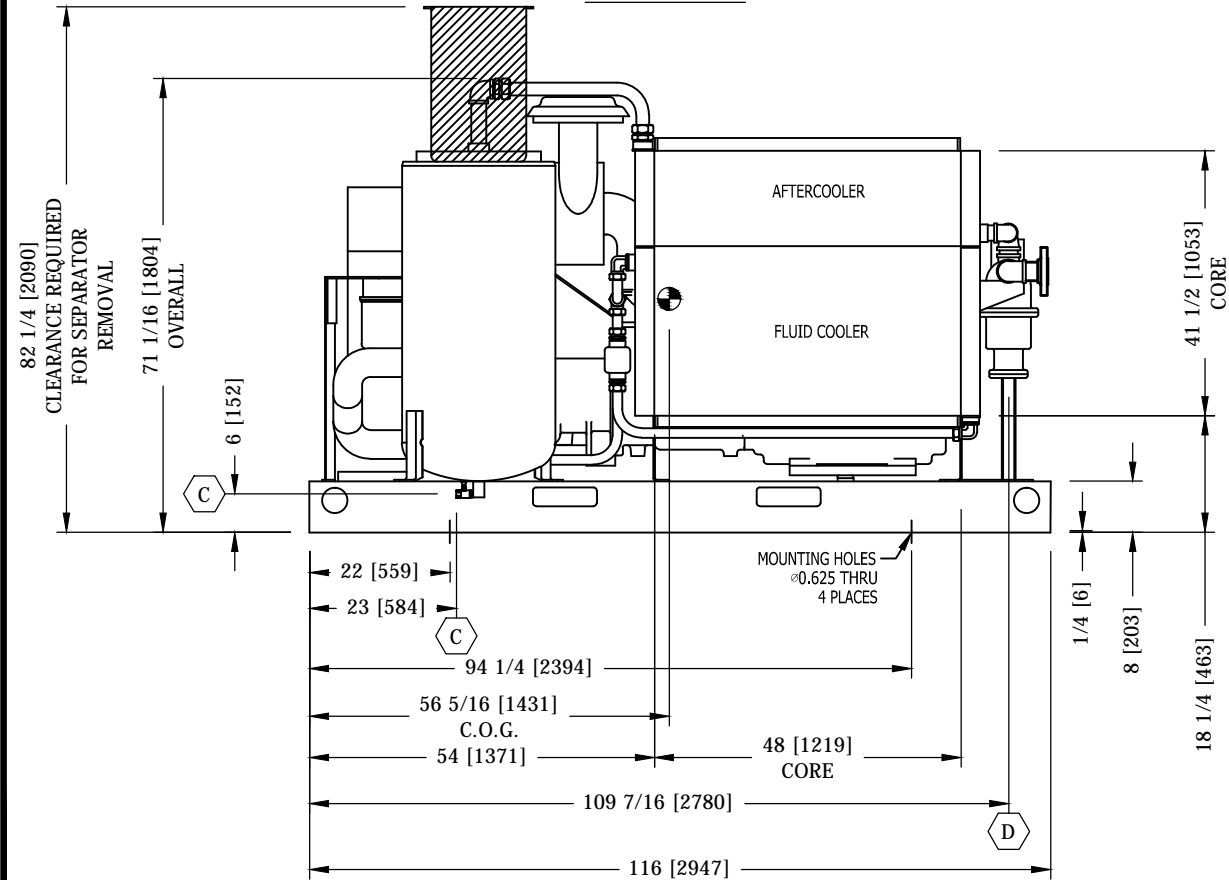
THIS DRAWING IS THE EXCLUSIVE PROPERTY OF NATIONAL PROCESS EQUIPMENT AND SHALL NOT BE REPRODUCED WITHOUT WRITTEN PERMISSION FROM NPE.

natpro

PROJECT NAME: SURMONT 1816 DEBOTTLENECKING AIR COMPRESSOR/DRYER
CUSTOMER: CONOCOPHILLIPS CANADA RESOURCES
LOCATION: LSD 05-18-083-06W4 ANZAC, AB
TAG: X-700
SLS#: 337757 QUOTE: CGY2012 781 PO#: 1816-004
DATE: MAR 20/14
DATE: MAR 20/14
DATE: MAR 20/14
PAGE: 1 OF 2
CAD: -
REV: 0



PLAN VIEW



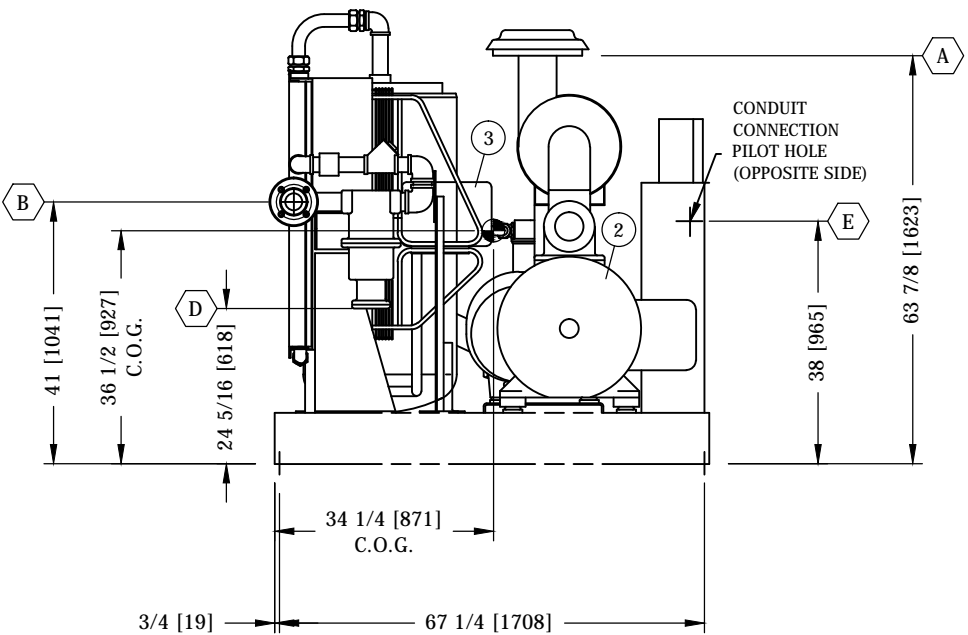
ELEVATION VIEW

SCHEDULE OF CONNECTIONS			
CONN	SIZE	RATING	DESCRIPTION
A	-	-	AIR INTAKE
B	2-1/2"	150# RF	AIR OUTLET
C	1/2"	NPTF	FLUID DRAIN
D	3/4"	NPTF	MOISTURE SEPARATOR DRAIN
E	TDB	PILOT	ELECTRICAL CONNECTION

BILL OF MATERIALS		
ITEM	QTY	DESCRIPTION
1	1	QSI-750 direct drive heavy duty oil flooded rotary screw air compressor. Rated at inlet 1266 Sm ³ /h at 762 kPag. <ul style="list-style-type: none">• Industrial duty, asymmetrical, rotary screw air end with axial air inlet,• Heavy duty steel base frame, Drop out flexible coupling with enclosed guard• Heavy duty 3 micron air filter,• Full flow 12 micron oil filter, Full flow fluid pump• Modulating capacity control Auto blow-down valve• CRN certified air cooled oil/air after cooler w/ moisture separator and auto drain trap• CRN certified Air / Oil Separator Assembly c/w pressure safety valve (Farris)• NEMA 4 electrical enclosure
2	1	Baldor 150 HP, 1800 rpm, 575V/3/60Hz 445TSC, TEFC drive electric motor c/w thermistors (one per phase) and 120VAC space heater with auxiliary terminal box.
3	1	Baldor 5 HP 1800 rpm, 575V/3/60Hz TEFC fan motor,

UTILITY REQUIREMENTS	
ITEM	LOAD
FAN MOTOR (FULL LOAD)	3.73 kW
DRIVE MOTOR (FULL LOAD)	111.9 kW
TOTAL PACKAGE ELECTRICAL CONSUMPTION	115.7 kW

COMPONENT WEIGHTS	
ITEM	POUNDS
COMPRESSOR	1600
DRIVE MOTOR	2130
COOLER & FAN MOTOR	110
TOTAL WEIGHT	3840



END VIEW

- NOTES-UNLESS OTHERWISE SPECIFIED:
- 1) ALLOW 4 FT OF CLEARANCE AROUND UNIT FOR ACCESS AND FREE AIR CIRCULATION.
 - 2) TOP DIMENSIONS ARE IN INCHES.
 - 3) DIMENSIONS IN PARENTHESIS ARE IN MILLIMETERS.
 - 4) ALL DIMENSIONS ±0.25 EXCLUDING PIPING WHICH IS SUBJECT TO COMPONENT TOLERANCE AND THREAD ENGAGEMENT.
 - 5) ANCHOR BOLTS TO BE SIZED AND PROVIDED BY OTHERS
 - 6) APPROXIMATE WEIGHT: 2965 KG
 - 6) QUINCY RECOMMENDS PINNING & GROUTING OF BASE

THIS DRAWING IS THE EXCLUSIVE PROPERTY OF NATIONAL PROCESS EQUIPMENT AND SHALL NOT BE REPRODUCED WITHOUT WRITTEN PERMISSION FROM NPE.

natpro

PROJECT NAME: SURMONT 1816 DEBOTTLENECKING AIR COMPRESSOR/DRYER

CUSTOMER: VISTA PROJECTS LTD.

LOCATION: LSD 05-18-083-06W4; ANZAC, ALBERTA

TAG: K-700

SLS#: 337757A QUOTE: VCR2012-781 PO#: _

OWN BY: CNP DATE: JUL 12/13 DWG #: 337757A-200

CHK BY: AJ DATE: JUL 12/13

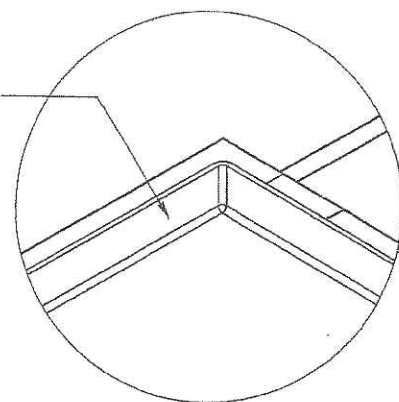
APP BY: AJ DATE: JUL 15/13 PAGE: 1 OF 1 SCALE: 1:30 REV: 4

4	AS BUILT	NSP	AJ	AJ	NOV 07/14
3	ADDED INDIVIDUAL COMPONENT WEIGHTS	CNP	AJ	AJ	SEP 09/13
2	ADDED ELECTRICAL CONNECTION LOCATION & LOAD REQUIREMENTS	CNP	AJ	AJ	SEP 03/13
1	REMOVED OUTLINE & DIMENSIONS OF OPTIONAL ENCLOSURE	CNP	AJ	AJ	AUG 15/13
0	ISSUED FOR RELEASE	CNP	AJ	AJ	JUL 15/13
REV	DESCRIPTION	DWN	CHK	APP	DATE

INSTRUMENT AIR COMPRESSOR GENERAL ARRANGEMENT



BEND CHECKER PLATE TO MAKE
2-1/2" HIGH LIP
TYP ALL OUTER EDGES OF SKID



FOR EQUIPMENT SUPPORT
DETAILS SEE PAGE 8 & 9

FOR LIFT LUG DETAILS
SEE DRAWING 337757PKG-301

FOR EQUIPMENT SUPPORT
DETAILS SEE PAGE 8 & 9

FOR SUMP DETAILS SEE PAGE 6

FOR MAIN SKID MEMBERS SEE PAGES 5, 6 & 7

ISOMETRIC VIEW

NOTE: CHECKER PLATE NOT SHOWN IN THIS VIEW FOR CLARITY

FOR CHECKER PLATE DETAILS
SEE DWG 337757PKG-302

GENERAL NOTES

1. ALL DIMENSIONS ARE IN INCHES U.N.O.
2. FABRICATION TOLERANCE +/- 1/8" U.N.O.
3. HOLE & TAP LOCATIONS TOLERANCE +/- 1/32" U.N.O.
4. CUT LENGTHS TO BE CONFIRMED BY FABRICATOR.
5. BREAK ALL SHARP EDGES AND CORNERS.
6. ALL HOLES FOR EQUIPMENT & PIPE CLAMPS TO BE DRILL & TAPPED DURING EQUIPMENT MOUNTING AND SPOOL ASSEMBLY.
7. MPI OF LIFT LUG BACKING PLATE
8. TOTAL APPROXIMATE WEIGHT: 15500LBS
9. SURFACE PREP & PAINTING: SKID WILL BE SAND BLASTED TO SSPC-SP6 CLEANED & PRIMED ON ALL SURFACES USING CLOVERDALE WATER BOURNE #70327 OR EQUIVALENT. SKID WILL BE FINISH PAINTED WITH CLOVERDALE 703 SERIES OR EQUAL ON TOP & SIDES.
10. THE SKID UNDERSIDE IS PROTECTED WITH A MINIMUM OF 3" LAYER OF R30 SPRAY FOAM (POLYURETHANE) INSULATION WITH 18G GALVANIZED STEEL SHEET.
11. REFER TO DWG NO 337757PKG-800-REV.1 FOR PILE LOAD & LOCATIONS.

THIS DRAWING IS THE EXCLUSIVE PROPERTY OF MATERIAL PROCESS EQUIPMENT AND SHALL NOT BE REPRODUCED WITHOUT WRITTEN PERMISSION FROM MPE.

natpro

PROJECT NAME: SURMONT 1816 DEBOTTLENECKING AIR COMPRESSOR/DRYER

CUSTOMER: CONOCOPHILLIPS CANADA RESOURCES

LOCATION: LSD 05-18-083-06W4 ANZAC, AB

TAG: X-700

SLS#: 337757 QUOTE: CGY2012 781 PO#: 1816-004

DWG BY: DHT DATE: FEB 19/14 DWG #: 337757PKG-300

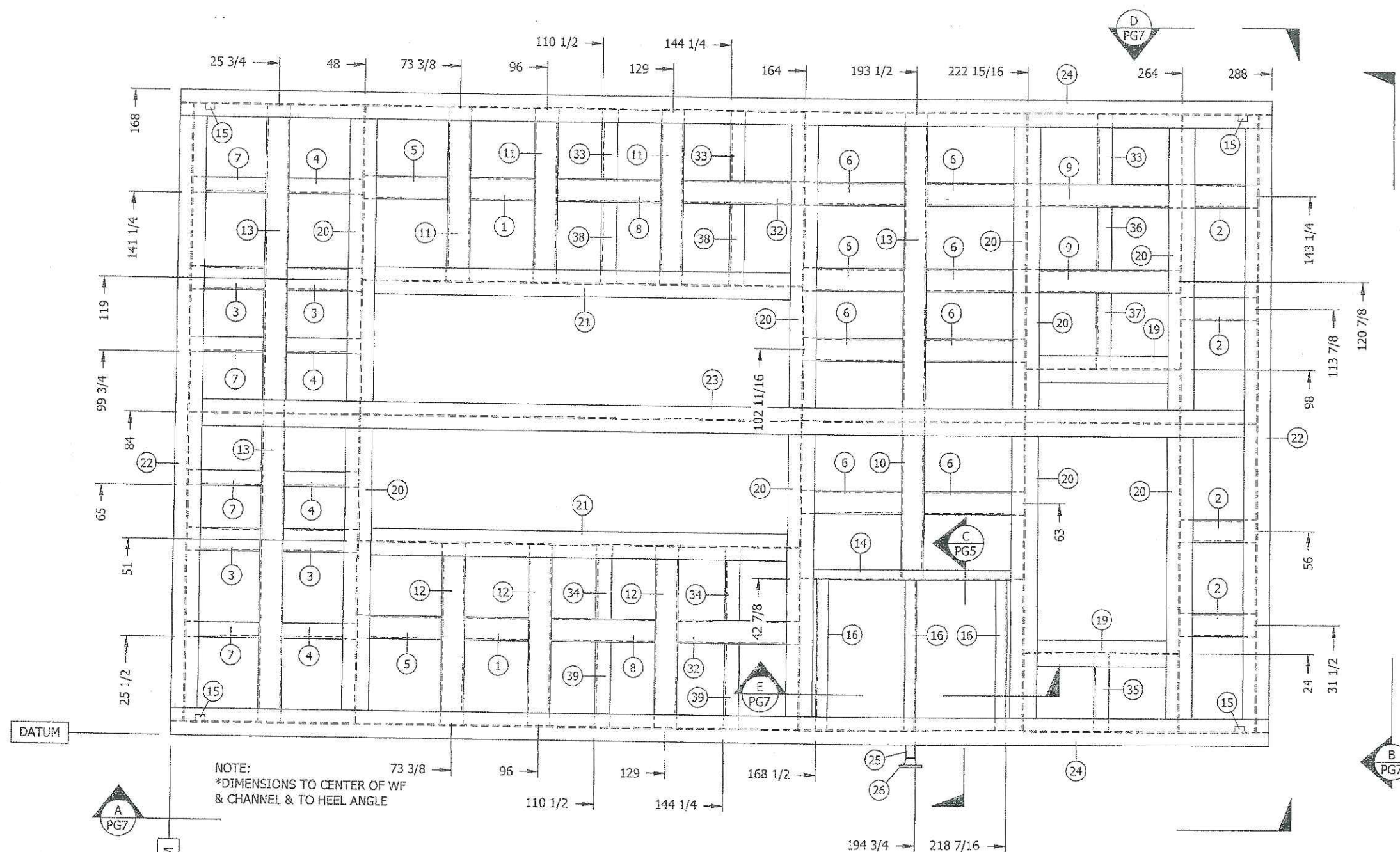
DRW BY: AJ DATE: MAR 13/14

APP BY: AJ DATE: MAR 13/14 PAGE: 1 OF 9

CJO: - REV: 1

REV	DESCRIPTION	DWN	CHK	APP	DATE
1	REVISED AS PER CUSTOMER COMMENTS	DHT	AJ	AJ	MAR 25/14
0	ISSUED FOR RELEASE	DHT	AJ	AJ	MAR 13/14

INSTRUMENT AIR COMPRESSOR PACKAGE
SKID DETAIL



NOTE:
*DIMENSIONS TO CENTER OF WF
& CHANNEL & TO HEEL ANGLE

PLAN VIEW

NOTE: GRATING NOT SHOWN IN THIS VIEW FOR CLARITY

GENERAL NOTES

1. ALL DIMENSIONS ARE IN INCHES U.N.O.
2. FABRICATION TOLERANCE +/- 1/8" U.N.O.
3. HOLE & TAP LOCATIONS TOLERANCE +/- 1/32" U.N.O.
4. CUT LENGTHS TO BE CONFIRMED BY FABRICATOR.
5. BREAK ALL SHARP EDGES AND CORNERS.
6. ALL HOLES FOR EQUIPMENT & PIPE CLAMPS TO BE DRILL & TAPPED DURING EQUIPMENT MOUNTING AND SPOOL ASSEMBLY.
7. MPI OF LIFT LUG BACKING PLATE
8. TOTAL APPROXIMATE WEIGHT: 15500LBS
9. SURFACE PREP & PAINTING: SKID WILL BE SAND BLASTED TO SSPC-SP6 CLEANED & PRIMED ON ALL SURFACES USING CLOVERDALE WATER BOURNE #70327 OR EQUIVALENT. SKID WILL BE FINISH PAINTED WITH CLOVERDALE 703 SERIES OR EQUAL ON TOP & SIDES.
10. THE SKID UNDERSIDE IS PROTECTED WITH A MINIMUM OF 3" LAYER OF R30 SPRAY FOAM (POLYURETHANE) INSULATION WITH 18G GALVANIZED STEEL SHEET.
11. REFER TO DWG NO 337757PKG-800-REV.1 FOR PILE LOAD & LOCATIONS.

THIS DRAWING IS THE EXCLUSIVE PROPERTY OF NATIONAL PROCESS EQUIPMENT AND SHALL NOT BE REPRODUCED WITHOUT WRITTEN PERMISSION FROM NPE.

natpro

PROJECT NAME: SURMONT 1816 DEBOTTLENECKING AIR COMPRESSOR/DRYER

CUSTOMER: CONOCOPHILLIPS CANADA RESOURCES

LOCATION: LSD 05-18-083-06W4 ANZAC, AB

TAG: X-700

SLSK: 337757

QUOTE: CGY2012 781

PO#: 1816-004

DWG BY: DHT

DATE: FEB 19/14

CHK BY: AJ

DATE: MAR 13/14

APP BY: AJ

DATE: MAR 13/14

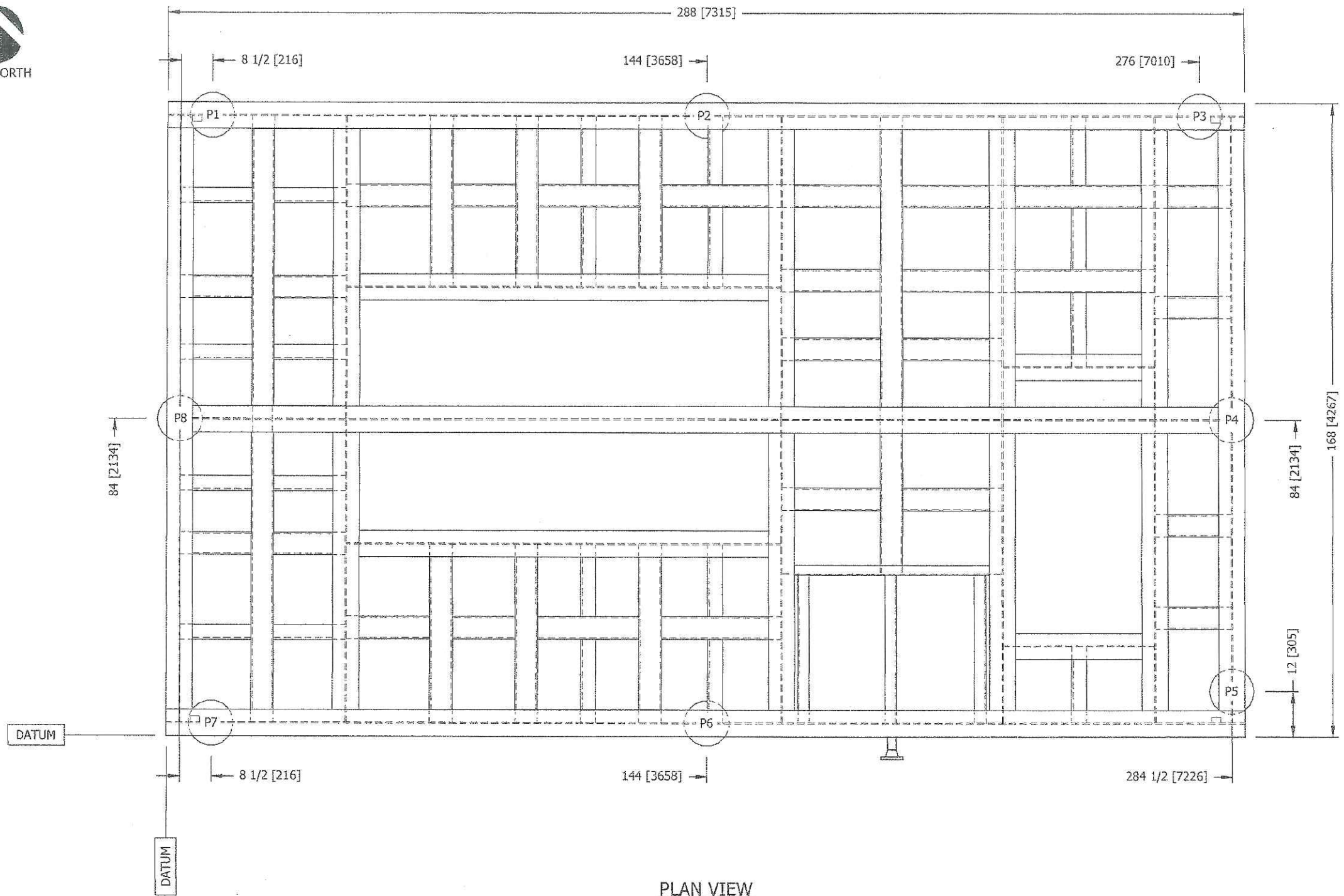
337757PKG-300

PAGE: 5 OF 9

CAD:

REV: 1

INSTRUMENT AIR COMPRESSOR PACKAGE
SKID DETAIL



PLAN VIEW

- GENERAL NOTES
1. ALL DIMENSIONS ARE IN INCH [mm] U.N.O.
 2. TOTAL APPROXIMATE PACKAGE WEIGHT: 42000LBS (19091Kg)

PILE LOADS (kN)				
PILE	DEAD	LIVE	SNOW	WIND
P1/P7	33	35	5.4	2.66
P2/P6	56	51.5	8.1	4.16
P3/P7	24	24	3.8	1.96
P4/P8	10	7	1.5	1.96

INSTRUMENT AIR COMPRESSOR PACKAGE				
PILE LOCATIONS/PILE LOADS				
1	REVISED AS PER MARKUPS	DHT	AS	AS
0	ISSUED FOR RELEASE	DHT	AS	AS
REV	DESCRIPTION	DWN	CHK	APP

THIS DRAWING IS THE EXCLUSIVE PROPERTY OF NATIONAL PROCESS EQUIPMENT AND SHALL NOT BE REPRODUCED WITHOUT WRITTEN PERMISSION FROM NPE.

natpro

PROJECT NAME: SURMONT 1816 DEBOTTLENECKING AIR COMPRESSOR/DRYER

CUSTOMER: CONOCOPHILLIPS CANADA RESOURCES

LOCATION: LSD 05-18-083-06W4 ANZAC, AB

TAG: X-700

SLS#: 337757 QUOTE: CGY2012 781 PO#: 1816-004

DWN BY: DHT DATE: MAR 20/14 DWS #:

OKR: AS DATE: MAR 20/14 337757PKG-800

APP BY: AS DATE: MAR 20/14 PAGE: 1 OF 1 CAD: - REV: 1



GENERAL NOTES

1. ALL DIMENSIONS ARE IN INCH[mm] U.N.O.
2. TOLERANCE +/- [1/4"] U.N.O.
3. ANCHOR BOLTS TO BE SIZED AND PROVIDED BY OTHERS.
4. PIPING CONFIGURATION WITHIN NATPRO SCOPE OF SUPPLY MAY VARY, EXCEPT CLIENT TIE IN POINTS.
5. FOR P&ID & MAIN BOM REFERENCE DWG (337757A-100).

INSTRUMENT AIR COMPRESSOR PACKAGE ELECTRICAL GENERAL ARRANGEMENT



PROJECT NAME: SURMONT 1816 DEBOTTLENECKING AIR COMPRESSOR/DRYER

CUSTOMER: CONOCOPHILLIPS CANADA RESOURCES

LOCATION: LSD 05-18-083-06W4 ANZAC, AE

TAG: X-700

SLS#: 337757A	QUOTE: CGY2012 781	PO#:
---------------	--------------------	------

DWN BY: DHT DATE: FEB 14/14

CHK BY: AR	DATE: FEB 18/14
-------------------	------------------------

APP BY: AJ	DATE: FEB 18/14
-------------------	------------------------

DWG # : _____

3577371 KG-700

PAGE: 1 OF 8

CAD: 1:30


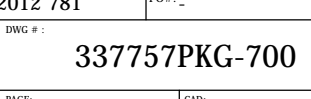
REV: 3

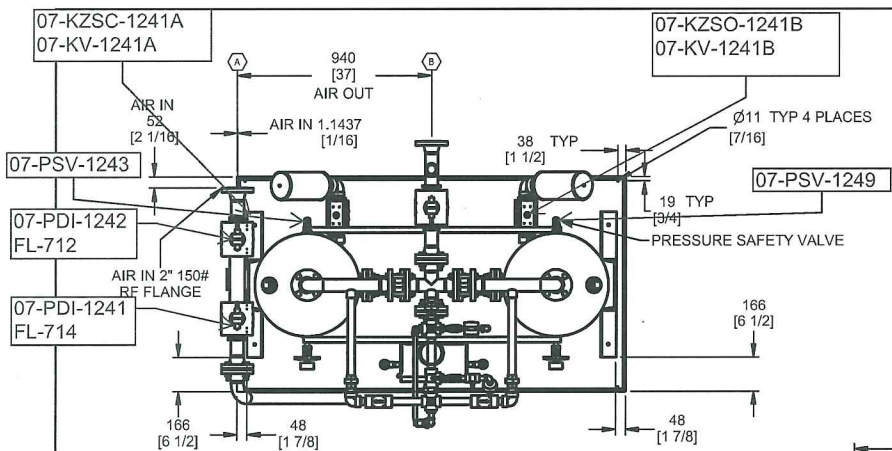


GENERAL NOTES

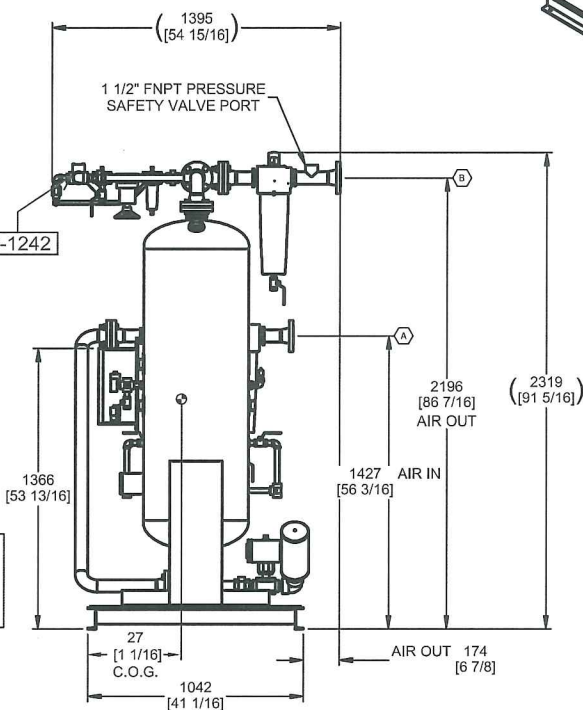
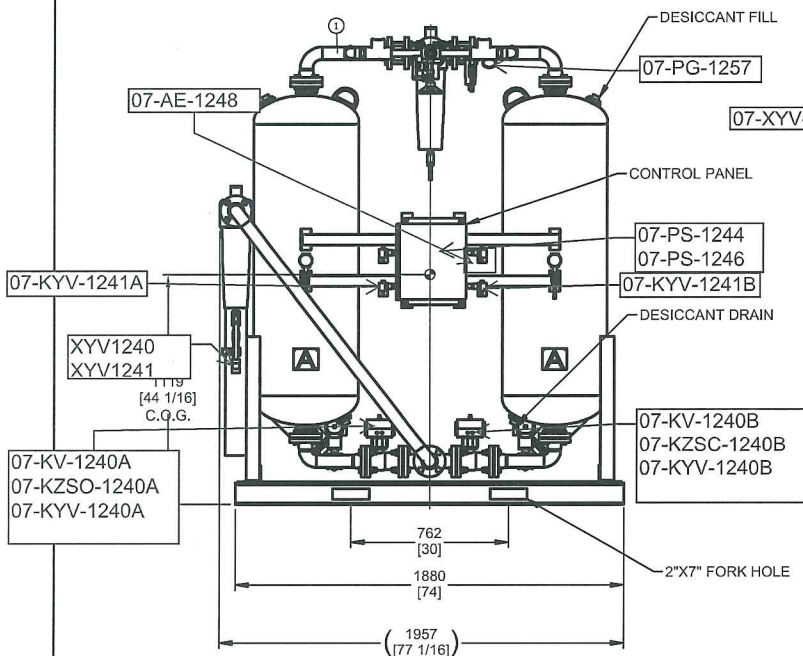
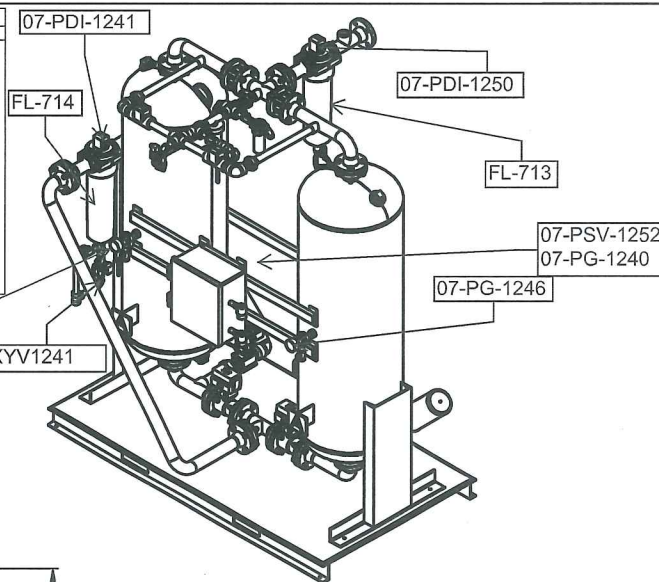
1. ALL DIMENSIONS ARE IN INCH[mm] U.N.O.
2. TOLERANCE +/- [1/4"] U.N.O.
3. ANCHOR BOLTS TO BE SIZED AND PROVIDED BY OTHERS.
4. PIPING CONFIGURATION WITHIN NATPRO SCOPE OF SUPPLY MAY VARY, EXCEPT CLIENT TIE IN POINTS.
5. FOR P&ID & MAIN BOM REFERENCE DWG (337757A-100).

3	REDLINE MARK UP	GW	AJ	AJ	AUG 11/14
2	REVISED AS PER MARKE UP	GW	AJ	AJ	JUL 07/28
1	REVISED AS PER MARKUPS	SA	AJ	AJ	JUL 07/14
0	ISSUED FOR RELEASE	SA	AJ	AJ	JUL 07/14
REV	DESCRIPTION	DWN	CHK	APP	DATE
INSTRUMENT AIR COMPRESSOR PACKAGE					
ELECTRICAL GENERAL ARRANGEMENT					

THIS DRAWING IS THE EXCLUSIVE PROPERTY OF NATIONAL PROCESS EQUIPMENT AND SHALL NOT BE REPRODUCED WITHOUT WRITTEN PERMISSION FROM NPE.									
									
PROJECT NAME: SURMONT 1816 DEBOTTLENECKING AIR COMPRESSOR/DRYER									
CUSTOMER: CONOCOPHILLIPS CANADA RESOURCES									
LOCATION: LSD 05-18-083-06W4 ANZAC, AB									
TAG: X-700									
SLS#: 337757A			QUOTE: CGY2012 781				PO#: -		
DWN BY: SA		DATE: JUL 07/14		<div style="border: 1px solid black; padding: 10px; text-align: center;">  </div>					
CHK BY: AR		DATE: JUL 07/14							
APP BY: AJ		DATE: JUL 07/14							
PAGE: 2 OF 8				CAD: 1:30		REV: 3			



BILL OF MATERIALS		
ITEM	QTY	DESCRIPTION
1	1	Parker Zander KTL600A1E-Special Heatless Desiccant Air Dryer Rated at Inlet 1230 Sscfm at 792 kPag (724 scfm at 115 psig Inlet Pressure and 35C Inlet Temperature w/ Zander micro-filters eco-dry will deliver air at -50 oC pressure dewpoint. Two tower, heatless, regenerative compressed air drying system consisting of the following components: -Two (2) desiccant towers, manufactured in compliance with the ASME code, 1/8" corrosion allowance, Alberta CRN and certified for use as unfired pressure vessels in Canada. -Designed for cyclic service w/ the initial fill of activated alumina desiccant. -Pressure gauge c/w block and bleed valve. -Purge Flow Indication and Adjustable Pressure Regulating Valve -ASME safety relief valve for thermal relief only. (Fails) -Stainless steel desiccant retainers/diffusers, 150 Psig design pressure. -NEMA 4X, 120V/1/60 control panel w/ failure to switch alarm. -2" 150# FLG Inlet and outlet connections -Stainless steel control tubing with Swagelok fittings -Colour change moisture indicator



- NOTES:
1. ALL DIMENSIONS ARE APPROXIMATE AND SUBJECT TO CHANGE UNLESS CERTIFIED.
 2. SEE MANUAL FOR COMPLETE SPECIFICATIONS, CAPACITIES, INSTALLATION, OPERATION & MAINTENANCE INSTRUCTIONS, & SAFETY PRECAUTIONS.
 3. PROVIDE MINIMUM 1219.2 mm ON EACH SIDE OF DRYER AND OVERHEAD FOR SERVICE AND MAINTENANCE.
 4. DO NOT OPERATE WITHOUT PROPER PURGE FLOW.
 5. BYPASS VALVES MUST BE BUBBLE TIGHT.
 6. DO NOT SURGE DESICCANT BED OR FILTERS.
 7. WEIGHT: 2120 LBS.
 8. POWER REQUIREMENTS: 120V/1/60Hz.

SCHEDULE OF OPENINGS			
CONN	SIZE	RATING	DESCRIPTION
A	2"	150# RF	AIR INTAKE
B	2"	150# RF	AIR OUTLET

THIS DRAWING IS THE SOLE PROPERTY OF NATPRO PROJECT EQUIPMENT AND SHALL NOT BE REPRODUCED OR COPIED WITHOUT THE WRITTEN PERMISSION OF NATPRO.

natpro

PROJECT NAME: GILBERT 1816 DEBOTTLENECKING AIR COMPRESSOR/DRYER

CLIENT: VISTA PROJECTS LTD.

LOCATION: LSD 05-18-083-66W4; ANZAC, ALBERTA

TAG: X-700

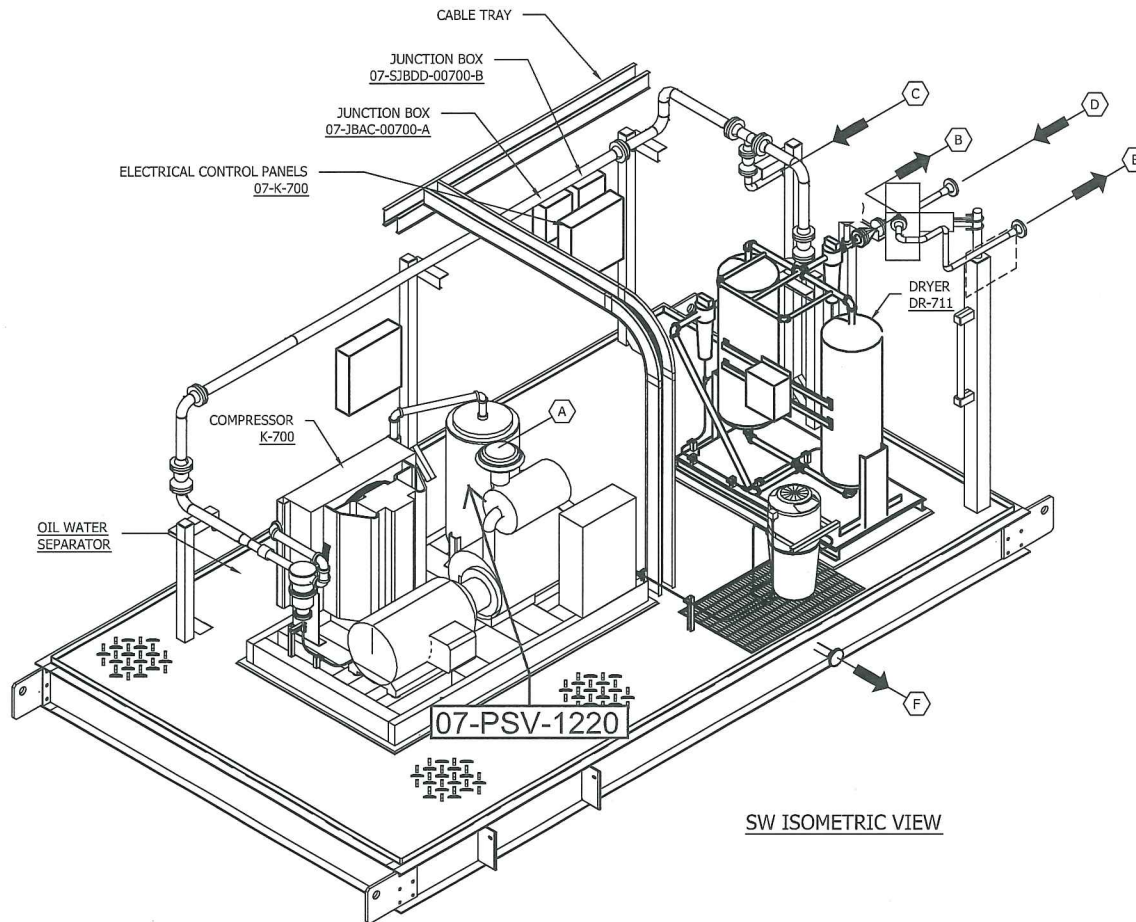
SLIP: 337757

DATE: JUL 12/13

REV: 1 OF 1

INSTRUMENT LAYOUT DRAWING

337757B-200



SW ISOMETRIC VIEW

THIS DRAWING IS THE EXCLUSIVE PROPERTY OF NATIONAL PROCESS EQUIPMENT AND SHALL NOT BE REPRODUCED WITHOUT WRITTEN PERMISSION FROM NPE.



PROJECT NAME: SURMONT 1816 DEBOTTLENECKING AIR COMPRESSOR/DRYER

CUSTOMER: CONOCOPHILLIPS CANADA RESOURCES

LOCATION: LSD 05-18-083-06W4 ANZAC, AB

TAG: X-700

SLS# 337757A QUOTE: CGY2012 781 PO#

DATE: FEB 14/14 DWT
DATE: FEB 18/14 AJ
337757PKG-200

DATE: FEB 18/14 AJ
PAGE: 4 OF 4 CAD: - Rev3

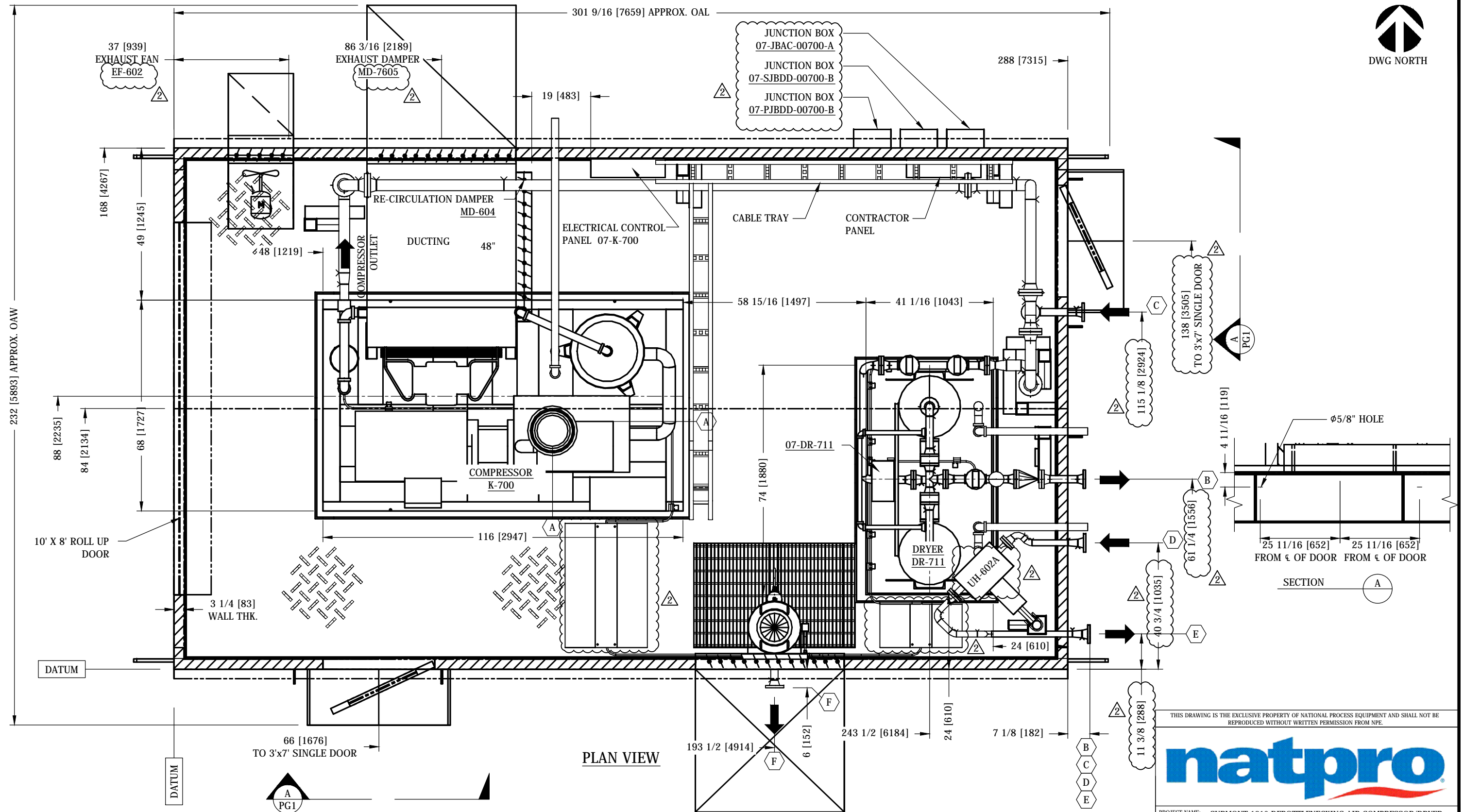
SCHEDULE OF OPENINGS

CONN	SIZE	RATING	DESCRIPTION
A	FILTER	-	PACKAGE INLET
B	2"	150# RF	PACKAGE OUTLET
C	2"	150# RF	EXISTING AIR LINE
D	2"	300# RF	HEATER INLET
E	2"	300# RF	HEATER OUTLET
F	2"	150# RF	SUMP DRAIN

GENERAL NOTES

1. ALL DIMENSIONS ARE IN INCH[mm] U.N.O.
2. TOLERANCE +/- [1/4"] U.N.O.
3. ANCHOR BOLTS TO BE SIZED AND PROVIDED BY OTHERS.
4. PIPING CONFIGURATION WITHIN NATPRO SCOPE OF SUPPLY MAY VARY, EXCEPT CLIENT TIE IN POINTS.
5. FOR P&ID & MAIN BOM REFERENCE DWG (337757A-100).

REV	DESCRIPTION	DWN	CHK	APP	DATE
	INSTRUMENT LAYOUT DRAWING				



PLAN VIEW

SCHEDULE OF OPENINGS

CONN	SIZE	RATING	DESCRIPTION
A	FILTER	-	PACKAGE INLET
B	2"	150# RF	PACKAGE OUTLET
C	2"	150# RF	EXISTING AIR LINE
D	2"	300# RF	HEATER INLET
E	2"	300# RF	HEATER OUTLET
F	2"	150# RF	SUMP DRAIN

GENERAL NOTES

- ALL DIMENSIONS ARE IN INCH[mm] U.N.O.
- TOLERANCE +/- [1/4"] U.N.O.
- ANCHOR BOLTS TO BE SIZED AND PROVIDED BY OTHERS.
- PIPING CONFIGURATION WITHIN NATPRO SCOPE OF SUPPLY MAY VARY, EXCEPT CLIENT TIE IN POINTS.
- FOR P&ID & MAIN BOM REFERENCE DWG (337757A-100).

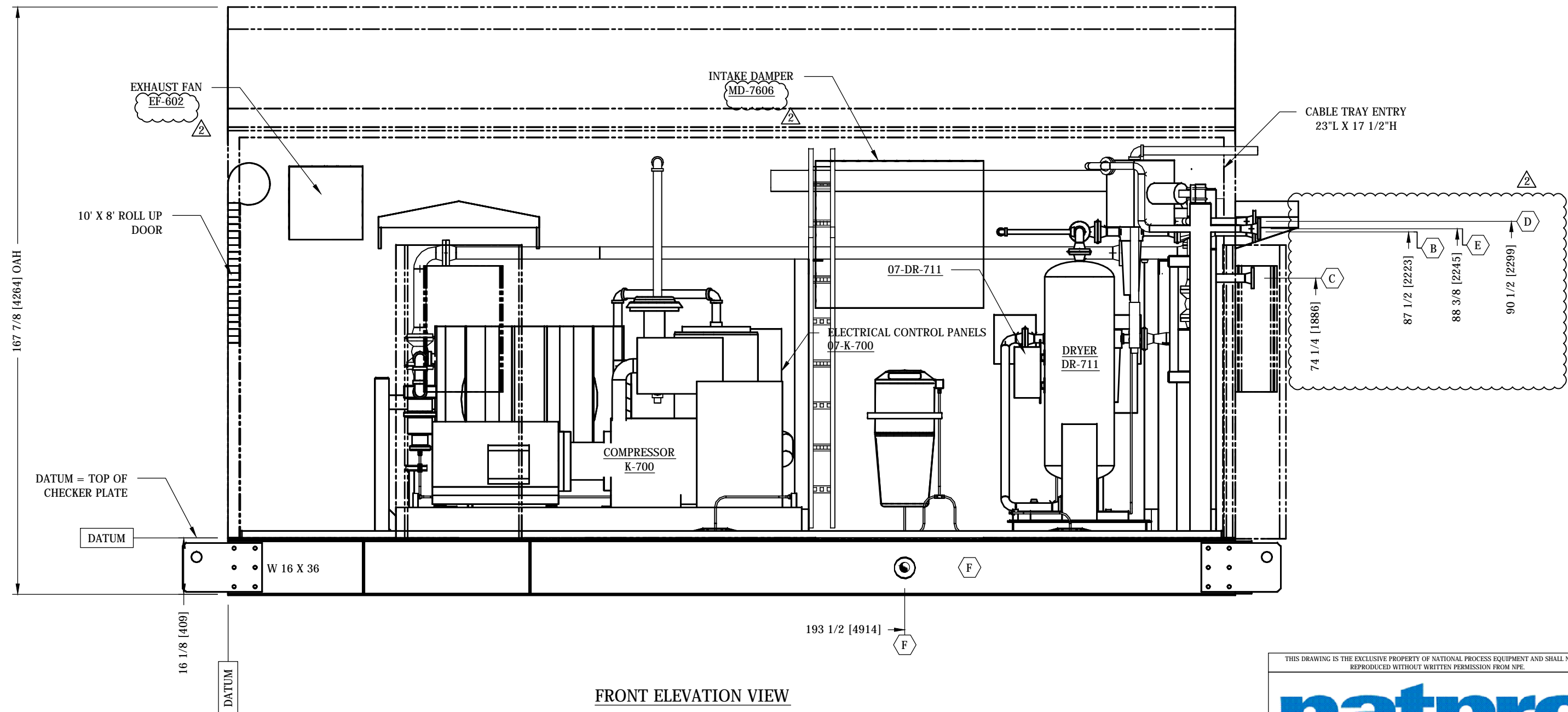
4	REDLINE	GW	NP	AJ	SEP 08/14
3	ADDED PSV PIPING	LK	NP	AJ	AUG 18/14
2	AS BUILT	GW	AJ	AJ	JUL 04/14
1	REVISED AS PER MARKUPS	SA	AJ	AJ	JUL 04/14
0	ISSUED FOR RELEASE	DHT	AJ	AJ	FEB 18/14
REV	DESCRIPTION	DWN	CHK	APP	DATE

INSTRUMENT AIR COMPRESSOR PACKAGE GENERAL ARRANGEMENT

THIS DRAWING IS THE EXCLUSIVE PROPERTY OF NATIONAL PROCESS EQUIPMENT AND SHALL NOT BE REPRODUCED WITHOUT WRITTEN PERMISSION FROM NPE.



PROJECT NAME:	SURMONT 1816 DEBOTTLENECKING AIR COMPRESSOR/DRYER				
CUSTOMER:	CONOCOPHILLIPS CANADA RESOURCES				
LOCATION:	LSD 05-18-083-06W4 ANZAC, AB				
TAG:	X-700				
SLS#:	337757A	QUOTE:	CGY2012 781	PO#:	
OWN BY:	DHT	DATE:	FEB 14/14	DWG #:	337757PKG-200
CHK BY:	AJ	DATE:	FEB 18/14	PAGE:	1 OF 5
APP BY:	AJ	DATE:	FEB 18/14	CAD:	-
				REV:	4



FRONT ELEVATION VIEW

SCHEDULE OF OPENINGS

CONN	SIZE	RATING	DESCRIPTION
A	FILTER	-	PACKAGE INLET
B	2"	150# RF	PACKAGE OUTLET
C	2"	150# RF	EXISTING AIR LINE
D	2"	300# RF	HEATER INLET
E	2"	300# RF	HEATER OUTLET
F	2"	150# RF	SUMP DRAIN

GENERAL NOTES

- ALL DIMENSIONS ARE IN INCH[mm] U.N.O.
- TOLERANCE +/- [1/4"] U.N.O.
- ANCHOR BOLTS TO BE SIZED AND PROVIDED BY OTHERS.
- PIPING CONFIGURATION WITHIN NATPRO SCOPE OF SUPPLY MAY VARY, EXCEPT CLIENT TIE IN POINTS.
- FOR P&ID & MAIN BOM REFERENCE DWG (337757A-100).

4	REDLINE	GW	NP	AJ	SEP 08/14
3A	ADDED PSV PIPING	LK	NP	AJ	AUG 18/14
2	AS BUILT	GW	AJ	AJ	JUL 04/14
1	REVISED AS PER MARKUPS	SA	AJ	AJ	JUL 04/14
0	ISSUED FOR RELEASE	DHT	AJ	AJ	FEB 18/14
REV	DESCRIPTION	DWN	CHK	APP	DATE

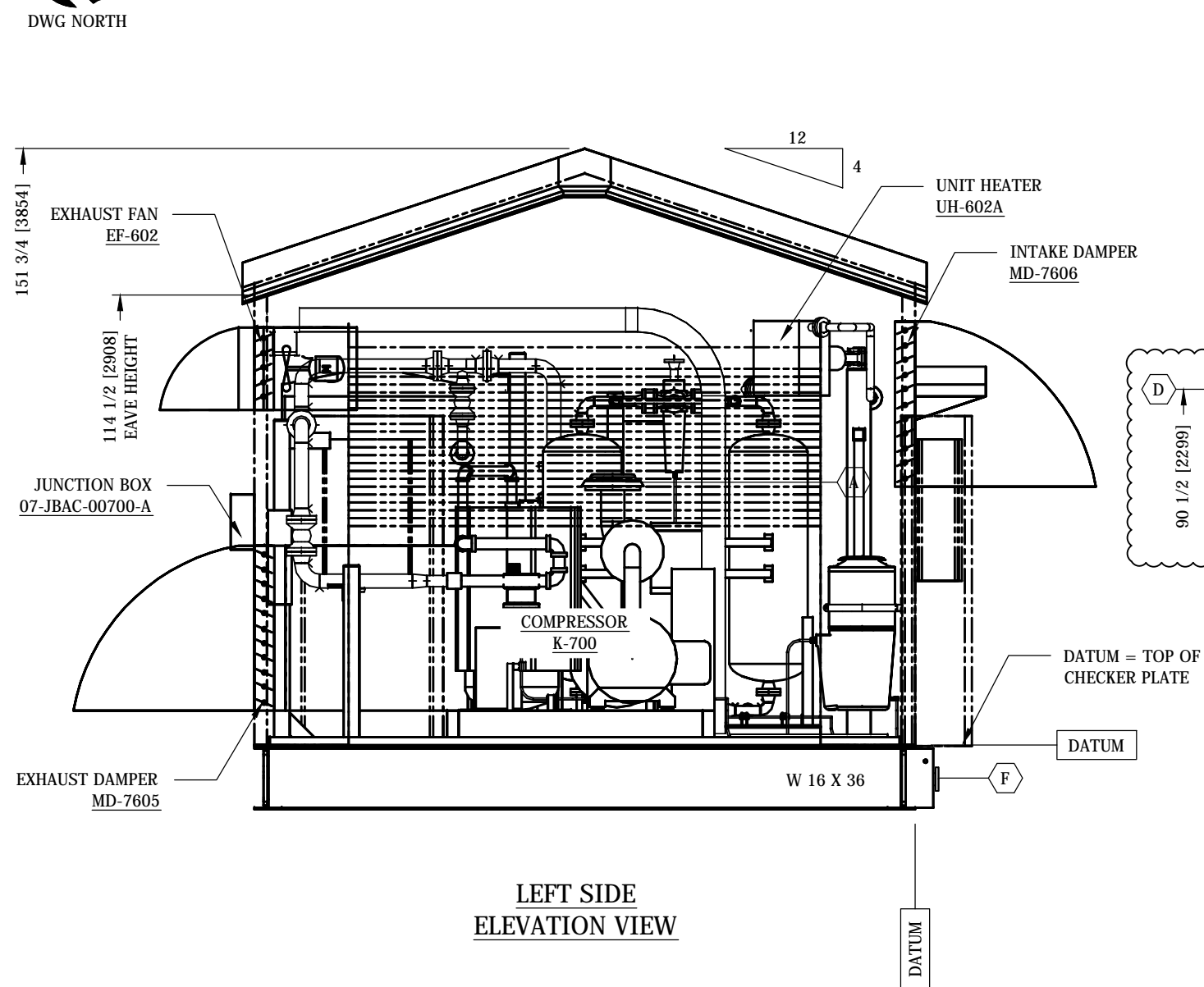
INSTRUMENT AIR COMPRESSOR PACKAGE
GENERAL ARRANGEMENT

THIS DRAWING IS THE EXCLUSIVE PROPERTY OF NATIONAL PROCESS EQUIPMENT AND SHALL NOT BE REPRODUCED WITHOUT WRITTEN PERMISSION FROM NPE.					
natpro					
PROJECT NAME: SURMONT 1816 DEBOTTLENECKING AIR COMPRESSOR/DRYER					
CUSTOMER: CONOCOPHILLIPS CANADA RESOURCES					
LOCATION: LSD 05-18-083-06W4 ANZAC, AB					
TAG: X-700					
SLS#: 337757A		QUOTE: CGY2012 781		PO#: _	
OWN BY: DHT	DATE: FEB 14/14	DWG #: 337757PKG-200			
CHK BY: AJ	DATE: FEB 18/14				
APP BY: AJ	DATE: FEB 18/14	PAGE: 2 OF 5	CAD: -	REV: 4	

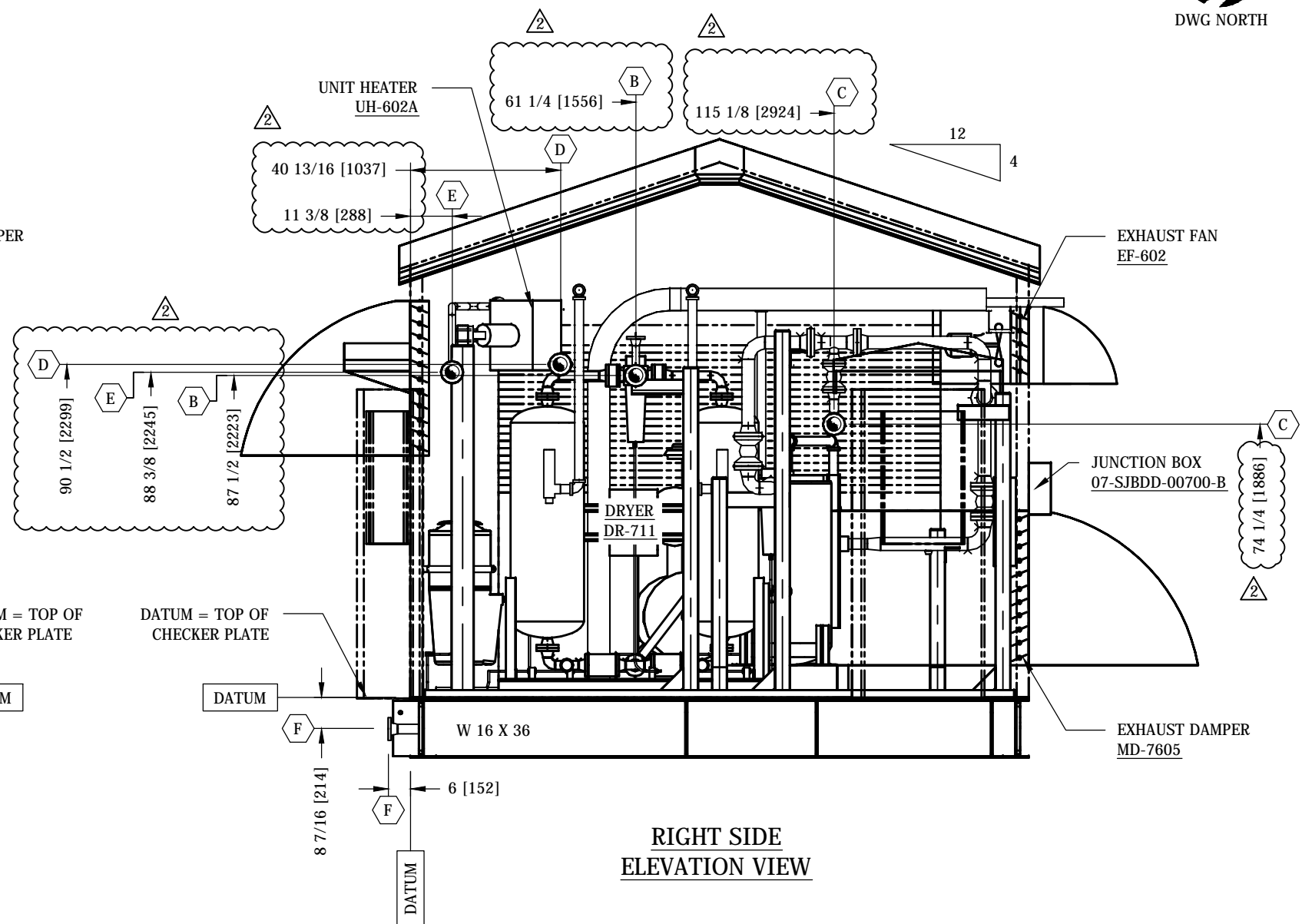


DWG NORTH

DWG NORTH



LEFT SIDE
ELEVATION VIEW



RIGHT SIDE
ELEVATION VIEW

SCHEDULE OF OPENINGS

CONN	SIZE	RATING	DESCRIPTION
A	FILTER	-	PACKAGE INLET
B	2"	150# RF	PACKAGE OUTLET
C	2"	150# RF	EXISTING AIR LINE
D	2"	300# RF	HEATER INLET
E	2"	300# RF	HEATER OUTLET
F	2"	150# RF	SUMP DRAIN

GENERAL NOTES

1. ALL DIMENSIONS ARE IN INCH[mm] U.N.O.
2. TOLERANCE +/- [1/4"] U.N.O.
3. ANCHOR BOLTS TO BE SIZED AND PROVIDED BY OTHERS.
4. PIPING CONFIGURATION WITHIN NATPRO SCOPE OF SUPPLY MAY VARY, EXCEPT CLIENT TIE IN POINTS.
5. FOR P&ID & MAIN BOM REFERENCE DWG (337757A-100).

4	REDLINE	GW	NP	AJ	SEP 08/14
3A	ADDED PSV PIPING	LK	NP	AJ	AUG 18/14
2	AS BUILT	GW	AJ	AJ	JUL 04/14
1	REVISED AS PER MARKUPS	SA	AJ	AJ	JUL 04/14
0	ISSUED FOR RELEASE	DHT	AJ	AJ	FEB 18/14
REV	DESCRIPTION	DWN	CHR	APP	DATE

INSTRUMENT AIR COMPRESSOR PACKAGE GENERAL ARRANGEMENT

THIS DRAWING IS THE EXCLUSIVE PROPERTY OF NATIONAL PROCESS EQUIPMENT AND SHALL NOT BE REPRODUCED WITHOUT WRITTEN PERMISSION FROM NPE.



PROJECT NAME: SURMONT 1816 DEBOTTLENECKING AIR COMPRESSOR/DRYER

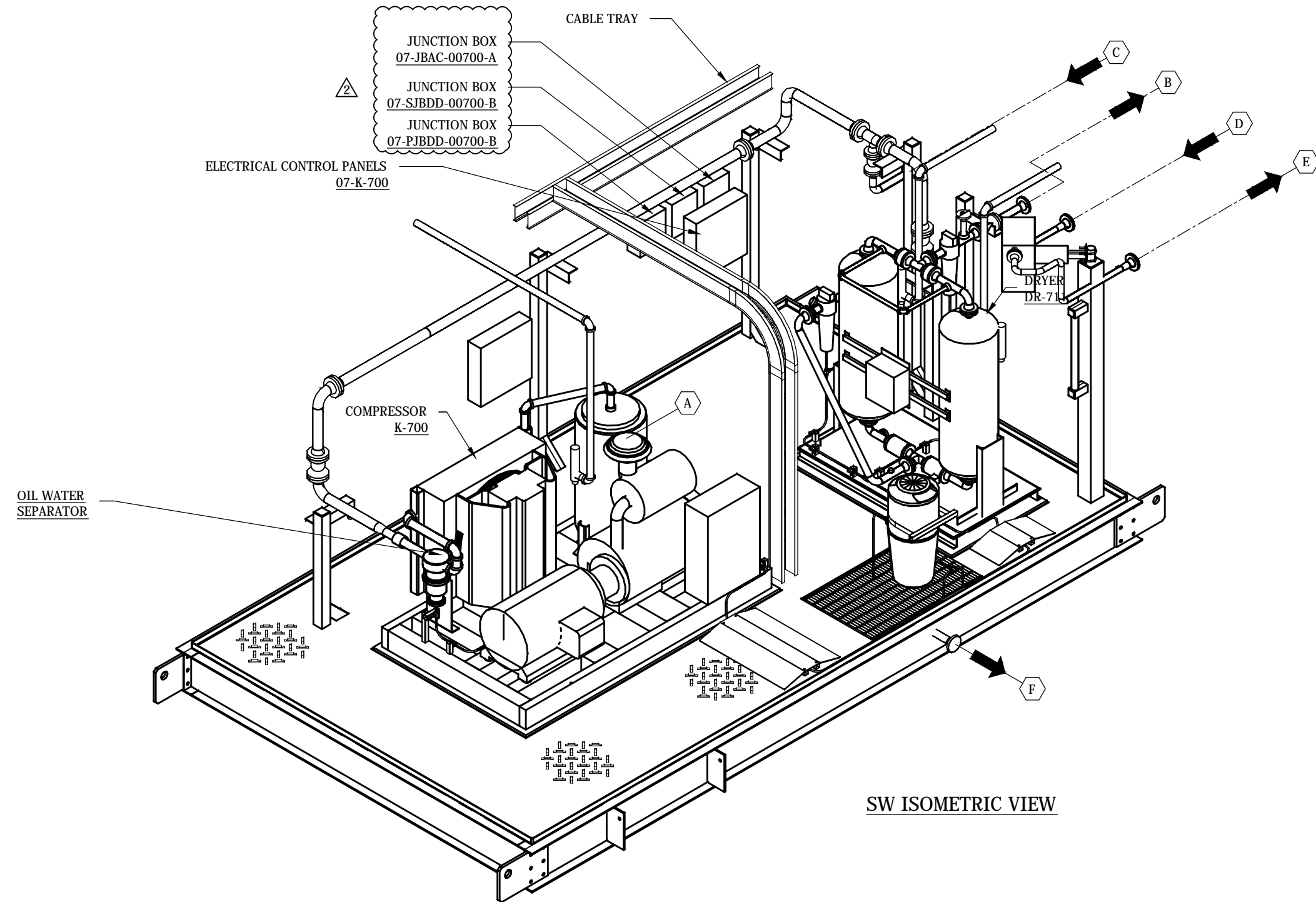
CUSTOMER: CONOCOPHILLIPS CANADA RESOURCES

LOCATION: LSD 05-18-083-06W4 ANZAC, AB

TAG: X-700

SLS#: 337757A QUOTE: CGY2012 781 PO#: _

OWN BY: DHT DATE: FEB 14/14 DWG #: 337757PKG-200
CHK BY: AJ DATE: FEB 18/14
APP BY: AJ DATE: FEB 18/14 PAGE: 3 OF 5 CAD: - REV: 4



SW ISOMETRIC VIEW

SCHEDULE OF OPENINGS			
CONN	SIZE	RATING	DESCRIPTION
A	FILTER	-	PACKAGE INLET
B	2"	150# RF	PACKAGE OUTLET
C	2"	150# RF	EXISTING AIR LINE
D	2"	300# RF	HEATER INLET
E	2"	300# RF	HEATER OUTLET
F	2"	150# RF	SUMP DRAIN

- GENERAL NOTES
- ALL DIMENSIONS ARE IN INCH[mm] U.N.O.
 - TOLERANCE +/- [1/4"] U.N.O.
 - ANCHOR BOLTS TO BE SIZED AND PROVIDED BY OTHERS.
 - PIPING CONFIGURATION WITHIN NATPRO SCOPE OF SUPPLY MAY VARY, EXCEPT CLIENT TIE IN POINTS.
 - FOR P&ID & MAIN BOM REFERENCE DWG (337757A-100).

4	REDLINE	GW	NP	AJ	SEP 08/14
3A	ADDED PSV PIPING	LK	NP	AJ	AUG 18/14
2	AS BUILT	GW	AJ	AJ	JUL 04/14
1	REVISED AS PER MARKUPS	SA	AJ	AJ	JUL 04/14
0	ISSUED FOR RELEASE	DHT	AJ	AJ	FEB 18/14
REV	DESCRIPTION	DWN	CHK	APP	DATE

INSTRUMENT AIR COMPRESSOR PACKAGE
GENERAL ARRANGEMENT

THIS DRAWING IS THE EXCLUSIVE PROPERTY OF NATIONAL PROCESS EQUIPMENT AND SHALL NOT BE REPRODUCED WITHOUT WRITTEN PERMISSION FROM NPE.

natpro

PROJECT NAME: SURMONT 1816 DEBOTTLENECKING AIR COMPRESSOR/DRYER

CUSTOMER: CONOCOPHILLIPS CANADA RESOURCES

LOCATION: LSD 05-18-083-06W4 ANZAC, AB

TAG: X-700

SLS#: 337757A QUOTE: CGY2012 781 PO#:

DWN BY: DHT DATE: FEB 14/14

CHK BY: AJ DATE: FEB 18/14

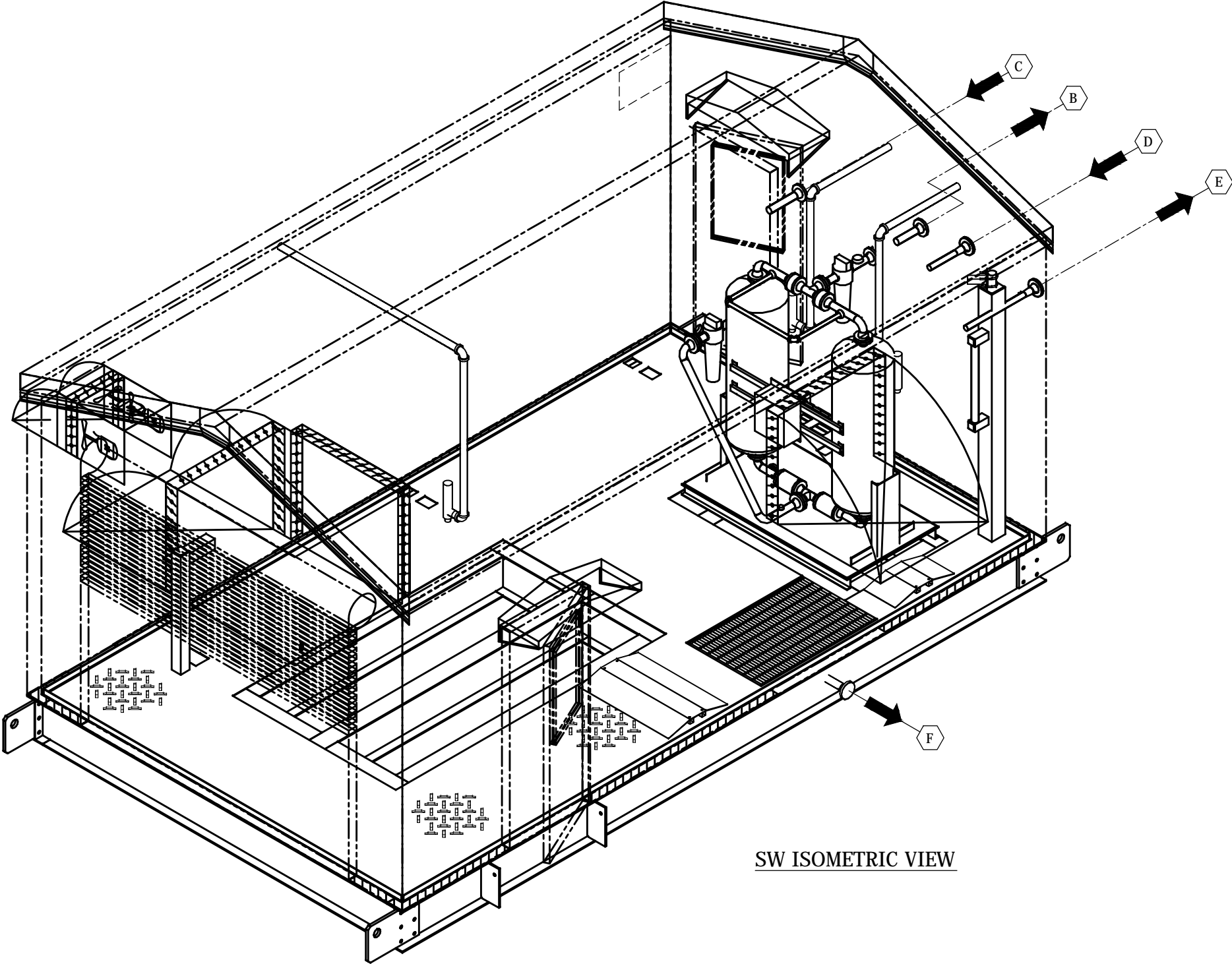
APP BY: AJ DATE: FEB 18/14

DWG #: 337757PKG-200

PAGE: 4 OF 5

CAD: -

REV: 4



SW ISOMETRIC VIEW

SCHEDULE OF OPENINGS			
CONN	SIZE	RATING	DESCRIPTION
A	FILTER	-	PACKAGE INLET
B	2"	150# RF	PACKAGE OUTLET
C	2"	150# RF	EXISTING AIR LINE
D	2"	300# RF	HEATER INLET
E	2"	300# RF	HEATER OUTLET
F	2"	150# RF	SUMP DRAIN

- GENERAL NOTES
- ALL DIMENSIONS ARE IN INCH[mm] U.N.O.
 - TOLERANCE +/- [1/4"] U.N.O.
 - ANCHOR BOLTS TO BE SIZED AND PROVIDED BY OTHERS.
 - PIPING CONFIGURATION WITHIN NATPRO SCOPE OF SUPPLY MAY VARY, EXCEPT CLIENT TIE IN POINTS.
 - FOR P&ID & MAIN BOM REFERENCE DWG (337757A-100).

4	REDLINE	GW	NP	AJ	SEP 08/14
3A	ADDED PSV PIPING	LK	NP	AJ	AUG 18/14
2	AS BUILT	GW	AJ	AJ	JUL 04/14
1	REVISED AS PER MARKUPS	SA	AJ	AJ	JUL 04/14
0	ISSUED FOR RELEASE	DHT	AJ	AJ	FEB 18/14
REV	DESCRIPTION	DWN	CHK	APP	DATE
INSTRUMENT AIR COMPRESSOR PACKAGE GENERAL ARRANGEMENT					

THIS DRAWING IS THE EXCLUSIVE PROPERTY OF NATIONAL PROCESS EQUIPMENT AND SHALL NOT BE REPRODUCED WITHOUT WRITTEN PERMISSION FROM NPE.

PROJECT NAME: SURMONT 1816 DEBOTTLENECKING AIR COMPRESSOR/DRYER

CUSTOMER: CONOCOPHILLIPS CANADA RESOURCES

LOCATION: LSD 05-18-083-06W4 ANZAC, AB

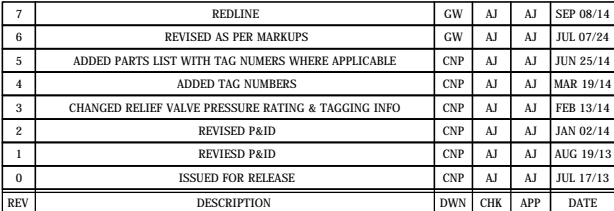
TAG: X-700

SLS#: 337757A QUOTE: CGY2012 781 PO#: _


DWN BY: DHT DATE: FEB 14/14 DWG #: 337757PKG-200

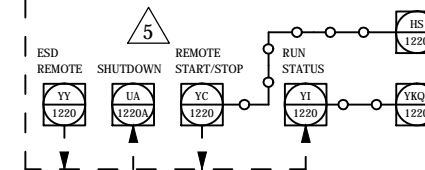
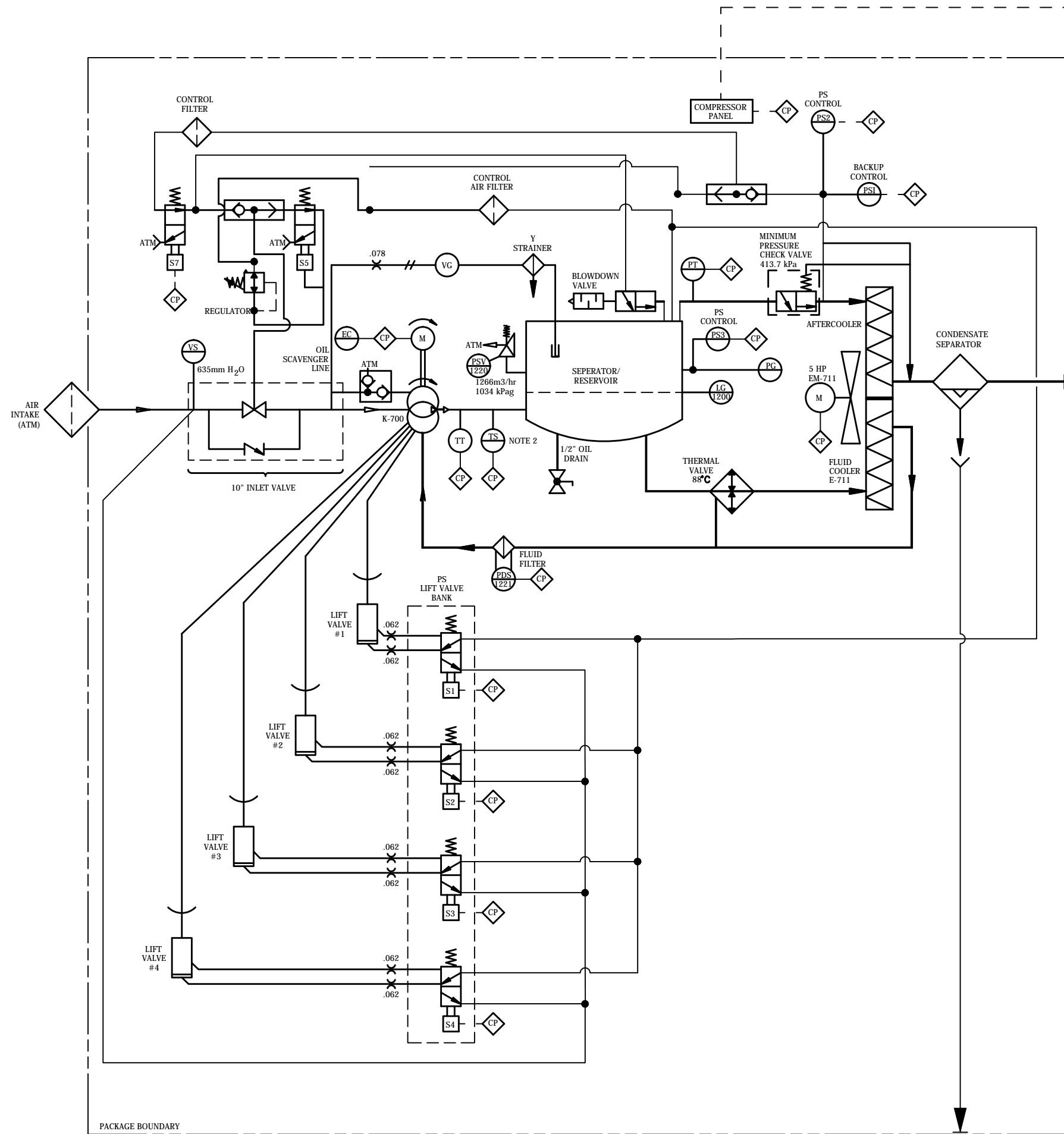
CHK BY: AJ DATE: FEB 18/14

APP BY: AJ DATE: FEB 18/14 PAGE: 5 OF 5 CAD: - REV: 4



PIPING & INSTRUMENTATION DIAGRAM DR-711 AIR DRYER

THIS DRAWING IS THE EXCLUSIVE PROPERTY OF NATIONAL PROCESS EQUIPMENT AND SHALL NOT BE REPRODUCED WITHOUT WRITTEN PERMISSION FROM NPE.				
				
PROJECT NAME: SURMONT 1816 DEBOTTLENECKING AIR COMPRESSOR/DRYER				
CUSTOMER: VISTA PROJECTS LTD.				
LOCATION: LSD 05-18-083-06W4; ANZAC, ALBERTA				
TAG: X-700				
SL# #: 337757A		QUOTE: CGY2012-781		PO#: 1816-004
DWN BY: CNP	DATE: JUL 12/13	337757A-100		
CHK BY: AJ	DATE: JUL 17/13			
APP BY: AJ	DATE: JUL 17/13	PAGE: 3 OF 4	CAD: -	REV: 7



NOTES:
1. REFER TO VENDOR MANUAL 65097-P#2A FOR DETAILED CONTROL PANEL FUNCTIONS.
2. HIGH HIGH TEMPERATURE SWITCH.

7	REDLINE	GW	AJ	AJ	SEP 08/14
6	REVISED AS PER MARKUPS	GW	AJ	AJ	JUL 07/24
5	REVISED AS PER MARKUPS	PG	AJ	AJ	JUL 07/14
4	REVISED AS PER MARKUPS	DHT	AJ	AJ	MAY 16/14
3	REVISED TAGGING AS PER CUSTOMER	CNP	AJ	AJ	FEB 13/14
2	REVISED TAGGING AS PER CUSTOMER	CNP	AJ	AJ	FEB 13/14
1	REVISED P&ID	CNP	AJ	AJ	AUG 19/13
0	ISSUED FOR RELEASE	CNP	AJ	AJ	JUL 17/13
REV	DESCRIPTION	DWN	CHR	APP	DATE

PIPING & INSTRUMENTATION DIAGRAM
K-700 COMPRESSOR

THIS DRAWING IS THE EXCLUSIVE PROPERTY OF NATIONAL PROCESS EQUIPMENT AND SHALL NOT BE REPRODUCED WITHOUT WRITTEN PERMISSION FROM NPE.

PROJECT NAME: SURMONT 1816 DEBOTTLENECKING AIR COMPRESSOR/DRYER

CUSTOMER: VISTA PROJECTS LTD.

LOCATION: LSD 05-18-083-06W4; ANZAC, ALBERTA

TAG: X-700

SLS#: 337757A CGY2012-781 PO#: 1816-004

DWN BY: CNP DATE: JUL 12/13 DWG #: 337757A-100

CHK BY: AJ DATE: JUL 17/13

APP BY: AJ DATE: JUL 17/13 PAGE: 2 OF 4 CAD: - REV: 7

TAG: EF-602
EXHAUST FAN

AIR FLOW: 1,416 L/S (3,000 CFM)
TOTAL EXTERNAL STATIC PRESSURE: 125 PA (0.500 " W.C.)
POWER SUPPLY: 575 V/3PH/60 HZ
FAN MOTOR: 0.373 KW (0.5 HP)
ACCESSORIES: 90 DEGREE DISCHARGE COWL C/W BIRDSCREEN, REMOTE THERMOSTAT

TAG: MD-7605
EXHAUST DAMPER

AIR FLOW: 6,371 L/S (13,500 CFM)
SIZE: 1,219 MM (48") (W) X 1,067 MM (42") (H)
SETTING: MODULATING
ACCESSORIES: 90 DEGREE DISCHARGE COWL C/W BIRDSCREEN

TAG: MD-604
RE-CIRCULATION DAMPER

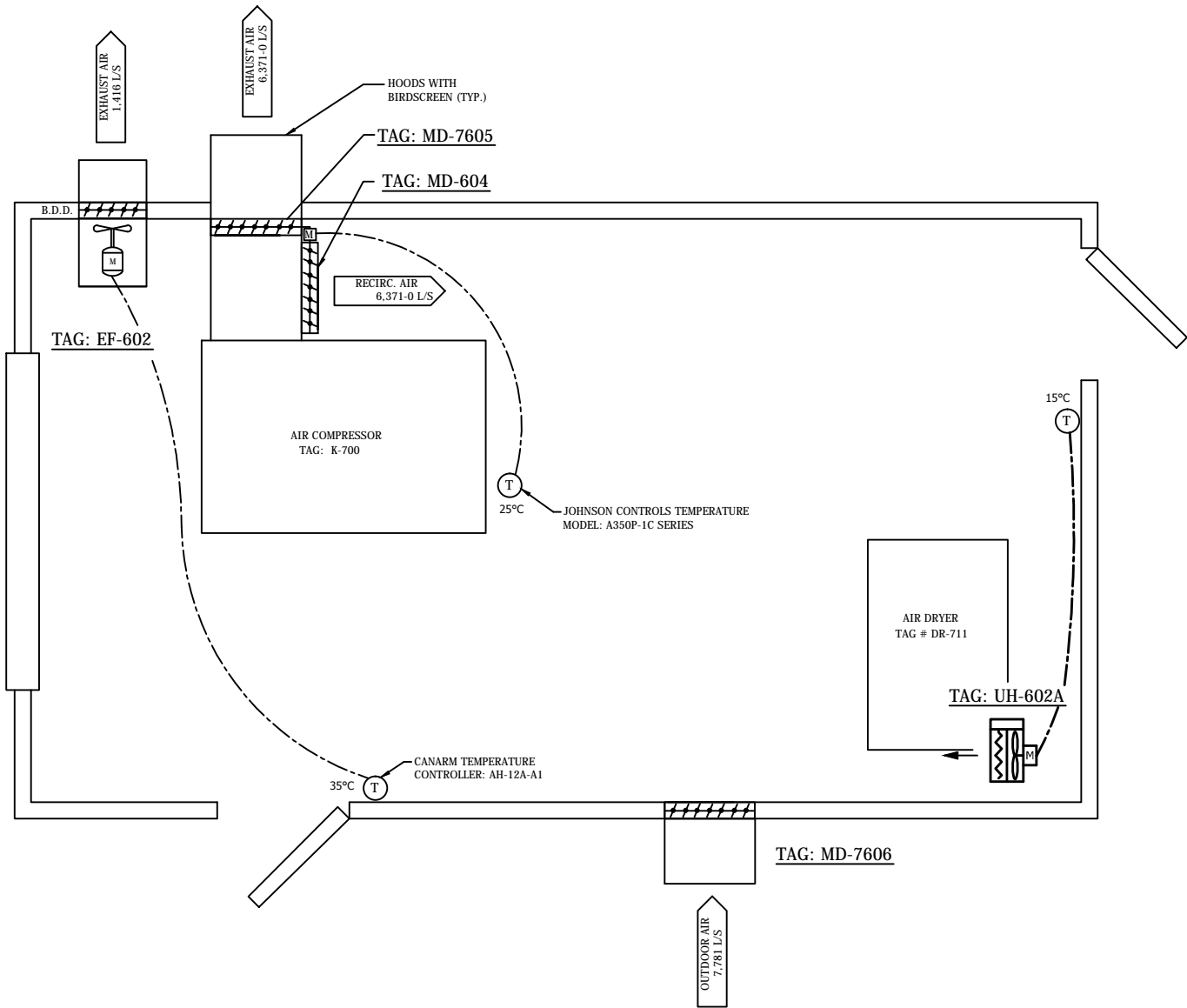
AIR FLOW: 6,371 L/S (13,500 CFM)
SIZE: 1,219 MM (48") (W) X 1,067 MM (42") (H)
SETTING: MODULATING

TAG: MD-7606
INTAKE DAMPER

AIR FLOW: 7,781 L/S (16,500 CFM)
SIZE: 1,219 MM (48") (W) X 1,219 MM (48") (H)
SETTING: BAROMETRIC 25 PA (0.10 " W.C.)
ACCESSORIES: 90 DEGREE DISCHARGE COWL C/W BIRDSCREEN

TAG: UH-602A
UNIT HEATER


HEATING CAPACITY: 20 KW
HEATING MEDIUM: GLYCOL
AIR FLOW: 483 L/S (1,024 CFM)
POWER SUPPLY: 575 V/3PH/60 HZ
FAN MOTOR: 0.186 KW (0.25 HP)
ACCESSORIES: REMOTE THERMOSTAT



7	REDLINE	GW	AJ	AJ	SEP 08/14
6	REVISED AS PER MARKUPS	GW	AJ	AJ	JUL 07/24
5	ADDED PARTS LIST WITH TAG NUMERS WHERE APPLICABLE	CNP	AJ	AJ	JUN 25/14
4	ADDED TAG NUMBERS	CNP	AJ	AJ	MAR 19/14
3	CHANGED RELIEF VALVE PRESSURE RATING & TAGGING INFO	CNP	AJ	AJ	FEB 13/14
2	REVISED P&ID	CNP	AJ	AJ	JAN 02/14
1	REVISED P&ID	CNP	AJ	AJ	AUG 19/13
0	ISSUED FOR RELEASE	CNP	AJ	AJ	JUL 17/13
REV	DESCRIPTION	DWN	CHR	APP	DATE

PIPING & INSTRUMENTATION DIAGRAM
DR-711 AIR DRYER

THIS DRAWING IS THE EXCLUSIVE PROPERTY OF NATIONAL PROCESS EQUIPMENT AND SHALL NOT BE REPRODUCED WITHOUT WRITTEN PERMISSION FROM NPE.



PROJECT NAME: SURMONT 1816 DEBOTTLENECKING AIR COMPRESSOR/DRYER

CUSTOMER: VISTA PROJECTS LTD.

LOCATION: LSD 05-18-083-06W4; ANZAC, ALBERTA

TAG: X-700

SLS#: 337757A QUOTE: CGY2012-781 PO#: 1816-004

DWN BY: CNP	DATE: JUL 12/13	DWG # : 337757A-100		
CHK BY: AJ	DATE: JUL 17/13			
APP BY: AJ	DATE: JUL 17/13	PAGE: 4 OF 4	CAD: -	REV: 7