

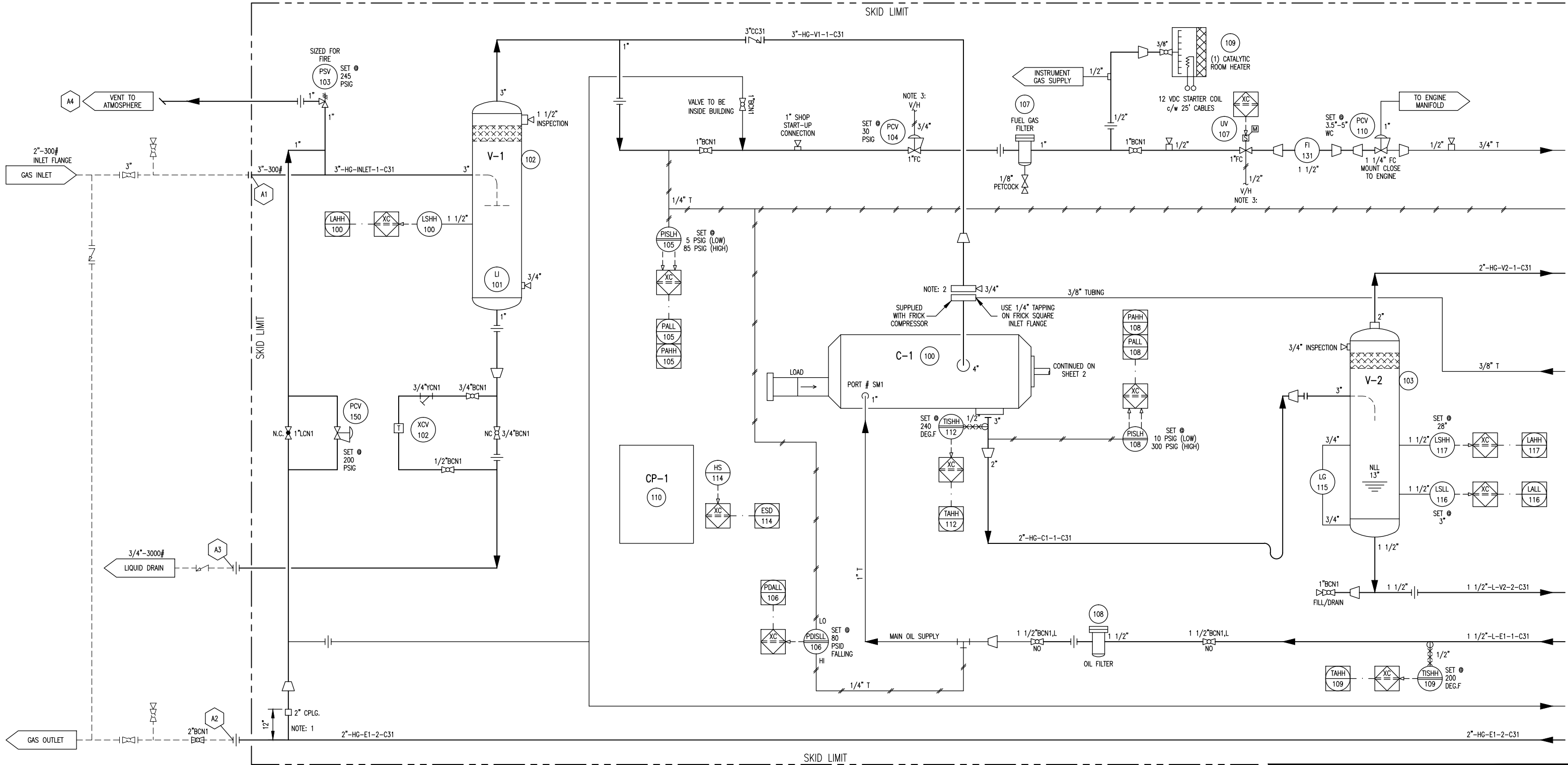
THE INFORMATION CONTAINED HEREIN IS THE CONFIDENTIAL PROPERTY OF TOROMONT PROCESS SYSTEMS AND IS NOT FOR PUBLICATION, AND NO PART THEREOF SHALL BE COPIED OR COMMUNICATED TO A THIRD PARTY WITHOUT AUTHORIZATION FROM TOROMONT PROCESS SYSTEMS.

V-1
SUCTION SCRUBBER
SIZE: 12 3/4" O.D. X 48" S/S
M.A.W.P.: 400 PSIG @ 250 DEG.F
M.D.M.T.: -20 DEG.F @ 400 PSIG
C.A.: 0.0625"
WEIGHT: 360 LBS.

CP-1
CONTROL PANEL
TYPE: MURPHY ENNUNCIATOR PANEL
MODEL: TTDJ-IGN-T SELECTRONIC, TATTLETALE
POWER SUPPLY: ENGINE IGNITION
RATED NON-INCENDIVE FOR
CLASS 1, DIV. 2 GROUPS C & D.

C-1
GAS COMPRESSOR
FRICK: MODEL XJS-120S
OPERATING SPEED: 900 TO 1800 RPM
SUCTION PRESSURE: 5-85 PSIG
DISCHARGE PRESSURE: 10-300 PSIG
Vt: 3.5
MAX. DISCHARGE PRESSURE: 348 PSIA
MAX. DISCHARGE TEMPERATURE: 250 DEG.F
FLOW: SEE CURVES
WEIGHT: 700 LBS

V-2
PRIMARY OIL SEPARATOR
SIZE: 12 3/4" O.D. X 48" S/S
M.A.W.P.: 400 PSIG @ 250 DEG.F
M.D.M.T.: -20 DEG.F @ 400 PSIG
C.A.: 0.0625"
WEIGHT: 360 LBS.



NOTE: 1
TAKE CONNECTION FROM THE TOP OF PIPE

NOTE: 2
INTEGRAL STRAINER SUPPLIED WITH FRICK COMPRESSOR



NOTE: 3
VENT LINES SHOULD FEED INTO A COMMON VENT HEADER
BEFORE EXITING THE BUILDING IF POSSIBLE

SKID GENERAL NOTES:

- ELECTRICAL CLASSIFICATION: CLASS 1, DIV. 2, GROUP D
- FIRE AND GAS DETECTION: BY CUSTOMER AS REQUIRED.
- MINIMUM DESIGN AMBIENT TEMPERATURE: 50 DEG.F
- MAXIMUM DESIGN AMBIENT TEMPERATURE: 90 DEG.F
- SITE ELEVATION: T.B.D.
- ATMOSPHERIC PRESSURE: 13.4 PSIA
- COMPRESSOR OIL TYPE: S5-150
- ENGINE OIL TYPE: ESSO G40, OR EQUAL
- ENGINE GLYCOL CHARGE: 50 / 50 EGY

REV.	DESCRIPTION	DATE	BY	APPR.
2	AS BUILT	MAY 6/03	CD	
1	ISSUED FOR CONSTRUCTION	FEB 19/03	CD	GS

PERMIT TO PRACTICE STAMP
ENGINEER STAMP

			
DRAWN BY: C. DAVIDSON		DATE: FEB 7/03	
CHKD. BY: G. SCHUSTER		SCALE: N/A	
APPR. BY: G. SCHUSTER		W.O. No: 11132101	
CUST. PO No:			

TITLE:		
P & I FLOW DIAGRAM		
FOR:		
TOROMONT PROCESS SYSTEMS 60 HP WELLHEAD BOOSTER		
DWG. No:	11132-101	SHEET No: 1 OF 3
		REV: 2

THE INFORMATION CONTAINED HEREIN IS THE CONFIDENTIAL PROPERTY OF TOROMONT PROCESS SYSTEMS AND IS NOT FOR PUBLICATION, AND NO PART THEREOF SHALL BE COPIED OR COMMUNICATED TO A THIRD PARTY WITHOUT AUTHORIZATION FROM TOROMONT PROCESS SYSTEMS.

V-3

SECONDARY OIL SEPARATOR

CHIL-CON: MODEL COSM-070-T
SIZE: 12 3/4" O.D. X 36 3/8" O.A.L.
M.A.W.P.: 400 PSIG @ 400 DEG.F
M.D.M.T.: -20 DEG.F @ 400 PSIG
C.A.: 0.0625"
ELEMENT: (1) RSC-03682
WEIGHT: 250 LBS.

CE-1

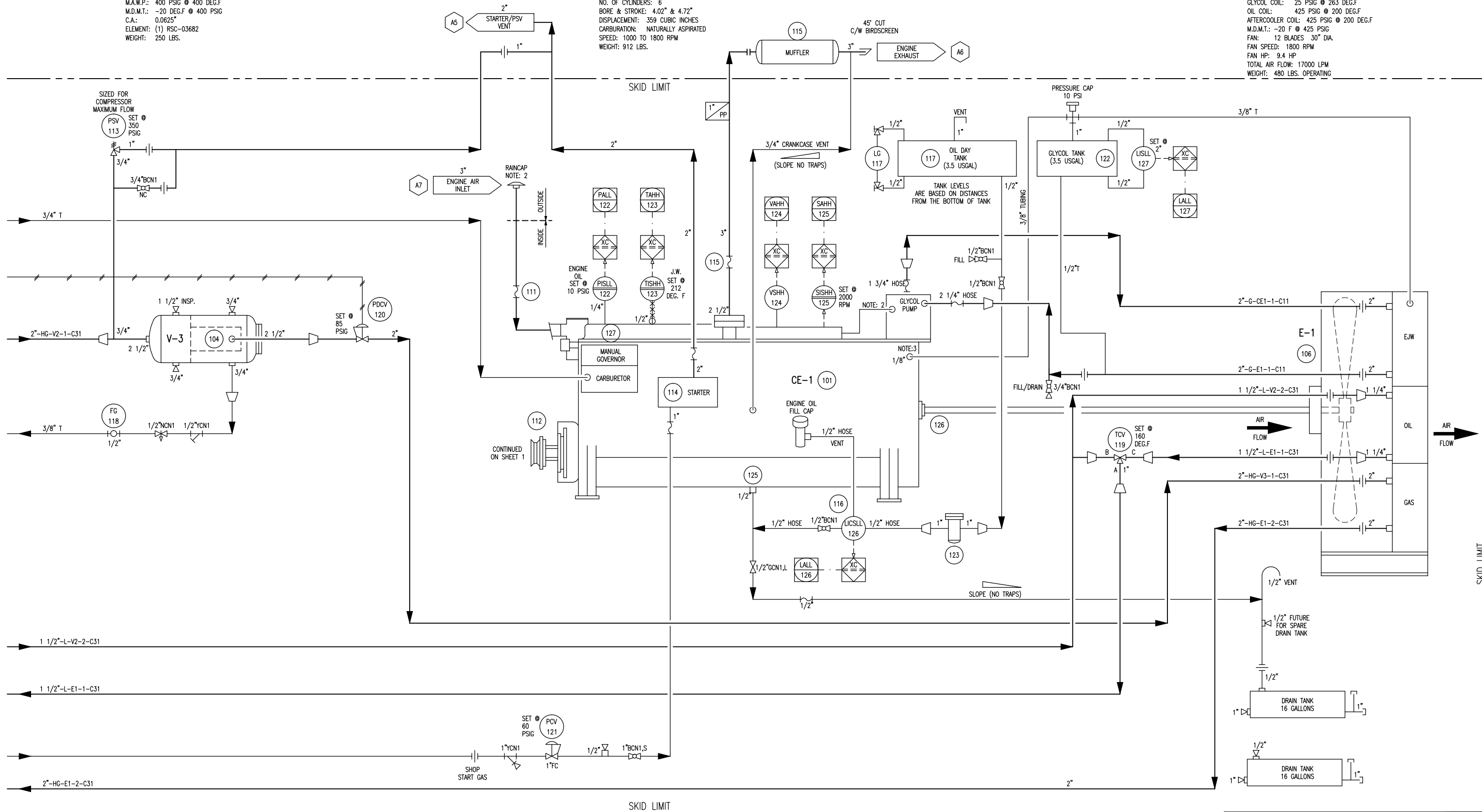
COMPRESSOR ENGINE

CUMMINS MODEL G5.9C84
84 HP @ 1800 RPM
NO. OF CYLINDERS: 6
BORE & STROKE: 4.02" & 4.72"
DISPLACEMENT: 359 CUBIC INCHES
CARBURATION: NATURALLY ASPIRATED
SPEED: 1000 TO 1800 RPM
WEIGHT: 912 LBS.

E-1

GLYCOL COOLER/AFTERCOOLER

TYPE: GLOBAL HEAT TRANSFER
MODEL: GHT 975 DC
GLYCOL COIL: 25 PSIG @ 263 DEG.F
OIL COIL: 425 PSIG @ 200 DEG.F
AFTERCOOLER COIL: 425 PSIG @ 200 DEG.F
M.D.M.T.: -20 F @ 425 PSIG
FAN: 12 BLADES 30" DIA.
FAN SPEED: 1800 RPM
FAN HP: 9.4 HP
TOTAL AIR FLOW: 17000 LPM
WEIGHT: 480 LBS. OPERATING



NOTE: 1
START GAS CONNECTION FROM TOP OF PIPE

NOTE: 2
SUPPLIED WITH ENGINE

NOTE: 3
DE-AERATION LINE TUBED TO THERMOSTAT HOUSING
(SEE ENGINE INSTALLATION DIAGRAM)

REV.	DESCRIPTION	DATE	BY	APPR.
2	AS BUILT	MAY 6/03	CD	
1	ISSUED FOR CONSTRUCTION	FEB 19/03	CD	GS

PERMIT TO PRACTICE STAMP

ENGINEER STAMP



DRAWN BY:
C. DAVIDSON
CHKD. BY:
G. SCHUSTER
APPR. BY:
G. SCHUSTER
CUST. PO No:

DATE:
FEB 7/03
SCALE:
N/A
W.O. No:
11132101

TITLE:
P & I FLOW DIAGRAM

FOR:
TOROMONT PROCESS SYSTEMS
60 HP
WELLHEAD BOOSTER

DWG. No: 11132-101

SHEET No: 2 OF 3

REV: 2

