

# 1,085 hp CAT 3516 TALE Howden MK6 Screw Compressor



Listing ID:  
**IH-4582**

## General Info

Service Type:  
**Sweet**

PASC Condition Rating:  
**B**

Condition Details:  
**Field Ready &/or Minor Repair**

Skidded:  
**Yes**

Trailer Mounted:  
**No**

Housed:  
**Yes**

Warranty:  
**No**

## Compressor Package Details

Year Built:  
**2003**

Packager:  
**Startec**

Hours:  
**77424**

Hours (Details):  
**40,000 hour head swing performed but is due for another one**

MAWP:  
**300**

VRU Application:  
**No**

## Compressor Details

Compressor Type:  
**Screw**

Compressor Make:  
**Howden**

Compressor Model:  
**MK6**

## Driver Info

Driver Make:  
**CAT**

Driver Model:  
**3516 TALE**

Driver Types:  
**Natural Gas**

Max HP:  
**1,085 hp**

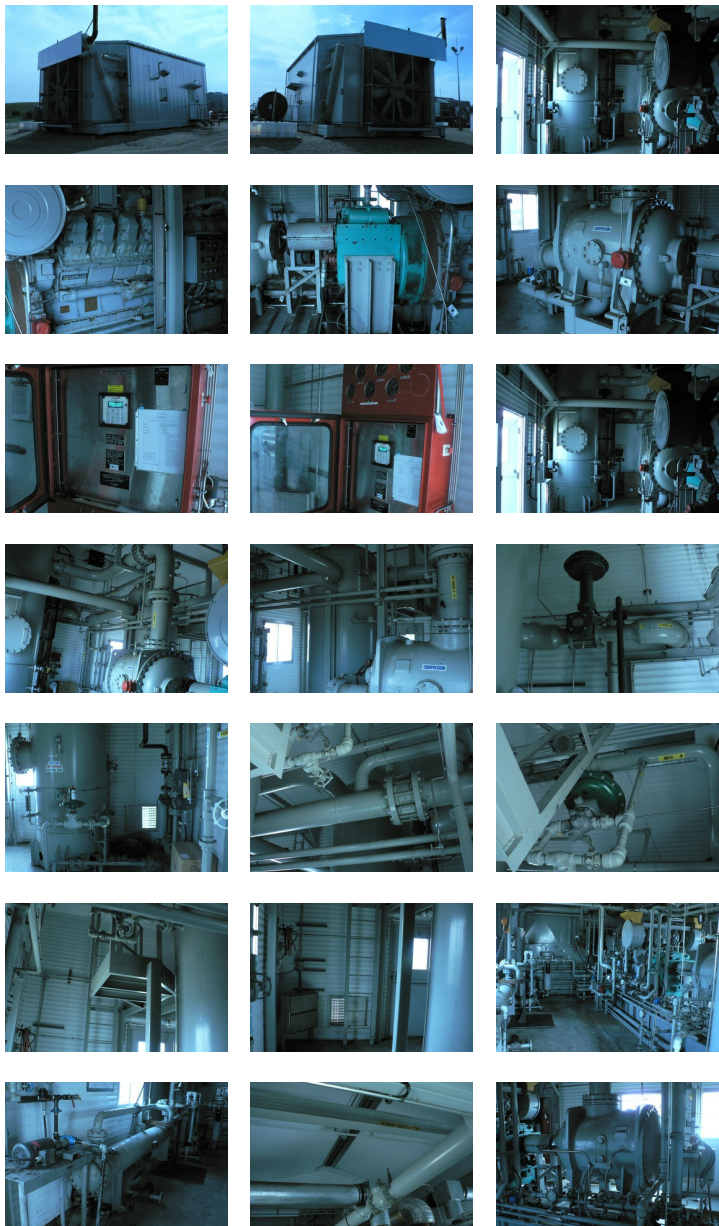
## Cooler Info

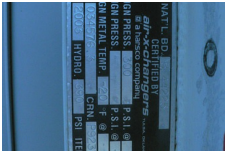
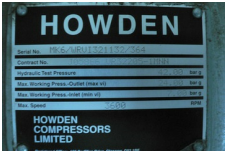
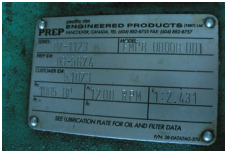
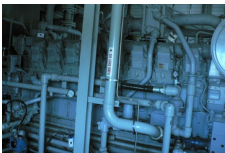
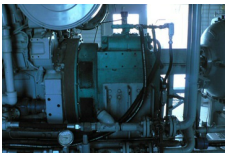
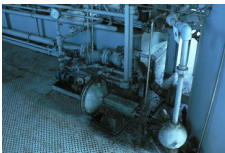
Cooler Make:  
**Air-X-Changer**

Cooler Model:  
**120EH**

## Control Panel

Control Panel Make:





Murphy Millenium

Building / Skid Info

Building Heated:  
No

Financial Info

Availability Status  
[Available](#)