

V-100  
3-PHASE SEPARATOR  
SIZE: 36" O.D. x 10'-0" S/S  
DESIGN PRESSURE: 1770 PSI @ 150°F  
C.A.: 1/8" (3.18mm)

V-130  
FUEL GAS SCRUBBER  
SIZE: 8" O.D. x 24" S/S  
DESIGN PRESSURE: 250 PSI @ 100°F  
C.A.: 1/16" (1.6 mm)  
SWEET SERVICE

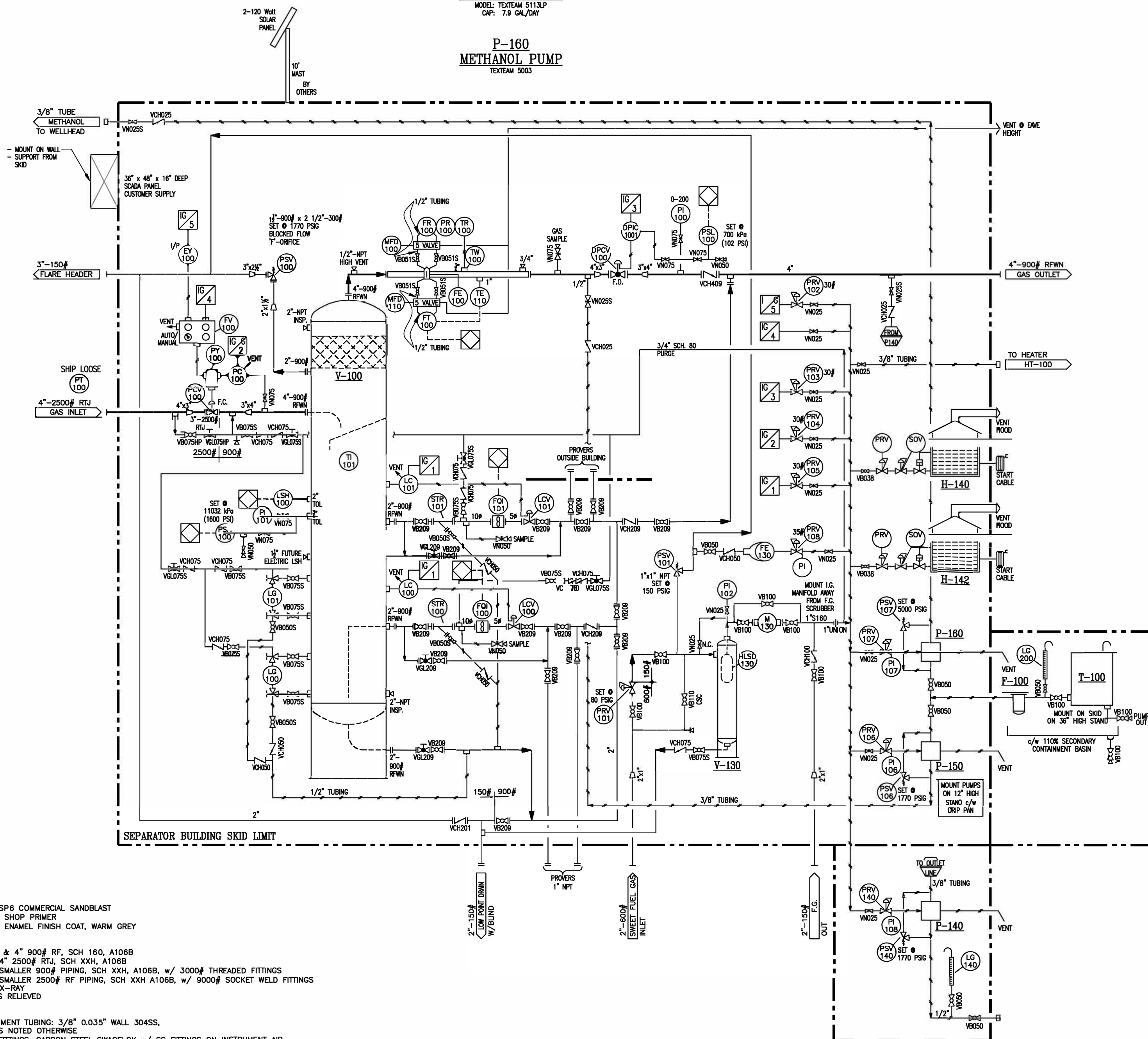
P-140  
CHEMICAL PUMP  
MODEL: WILLIAMS CP250 V225-CRIC  
CAP: 13.3 GAL (20 liters/Day)

P-150  
METHANOL PUMP  
MODEL: TEXTTEAM 5113LP  
CAP: 7.9 GAL/DAY

P-160  
METHANOL PUMP  
TEXTTEAM 5003

H-140/142  
BUILDING HEATERS  
CATADYNE: 30000 BTU, 24"x30" c/w THERMOSTAT  
912 REGULATOR, VENT HOOD, 12 V START  
SAFETY GRILL EXP. HOOK-UP, 25 FT CABLES

T-100  
METHANOL STORAGE TANK  
SIZE: 500 GALLON  
SINGLE WALL



NOTES:

PAINT  
- SSPC SP6 COMMERCIAL SANDBLAST  
- 1 S/C SHOP PRIMER  
- 1 S/C ENAMEL FINISH COAT, WARM GREY

PIPING  
- 2", 3" & 4" 900# RF, SCH 160, A106B  
- 3" & 4" 2500# RTJ, SCH XXH, A106B  
- 1" & SMALLER 900# PIPING, SCH XXH, A106B, w/ 3000# THREADED FITTINGS  
- 1" & SMALLER 2500# RF PIPING, SCH XXH A106B, w/ 9000# SOCKET WELD FITTINGS  
- 100% X-RAY  
- STRESS RELIEVED

TUBING  
- INSTRUMENT TUBING: 3/8" 0.035" WALL 304SS,  
UNLESS NOTED OTHERWISE  
- TUBE FITTINGS: CARBON STEEL SWAGELOK w/ SS FITTINGS ON INSTRUMENT AIR  
- 316 SS SWAGELOK ON PROCESS

LIST OF MATERIALS

ITEM	QTY	BRAND	DESCRIPTION
DPCV-100	1	FISHER	BACK PRESSURE VALVE, 3"-900# HPT-657-46, 6-30#, NACE, FAIL CLOSE
DPIC-1001	1	FISHER	4194 HBR DIFF. PRESS. CONTROLLER, 0-2500#, 6-30#, 316SS TRIM, SOUR, RECONDITIONED, 0 - 75#
EY-100	1	FISHER	DVC - 8010, 1/P POSITIONER, AUTOCALIBRATE ONLY
F-100	1	WIX	FILTER BODY, MODEL 4001 1" x 1" FNPT c/w 24006 FILTER ELEMENT
FE-100	1	DANIEL	SENIOR STYLE METER RUN, 4" 900 ANSI, SCH 80, AGA 3C, c/w 1.500" PLATE AND SEAL, 1991 CODE
FE-130	1	MVIS	ROTAMETER, 30 SCF/HR@30PSIG, #74C-234G041
FR-100	1	BARTON	3 PEN REC., 202E, 0-2000#, 0-100" WC., 0-150°F TEMP., 5 VALVE SS MANIFOLD W/ SS TUBING
FQI-100/101	2	PFS	LIQUID TURBINE METER, 2" x 1" EZ-N, c/w BAT-RT TOTALIZER w/ PULSE AND 24-20 OUTPUT
FT-100	1	FISHER	FLOBOSS 103 c/w MANIFOLD & BRACKET, CUSTOMER SUPPLIED
FV-100	1	SPARTAN	LOADING PANEL, #670FV-X95
H-140	1	CATADYNE	CATALYTIC HEATER, 30000 BTU 12V., c/w STAT, GRILL, 25' START CABLES, 24" HOOD & 912 REG, 24" x 30"
H-142	1	CATADYNE	CATALYTIC HEATER, 30000 BTU 12V., c/w STAT, GRILL, 25' START CABLES, 24" HOOD & 912 REG, 24" x 30"
HLSD-130	1	LOTECH	FUEL GAS HIGH LEVEL SHUT OFF
LC-100/101	2	FISHER	LEVEL CONTROLLER, 2" NPT, L2 DIRECT SNAP ACTION, 0-30 PSI OUTPUT
LCV-100/101	2	FISHER	CONTROL VALVE, 2"-900# RF, D3, 3/4" PORT, 0-35 PSI SIGNAL, F.C., NACE TRIM
LG-100	1	QUIMST	TRANSPARENT LEVEL GAUGE, 51TM (7 7/8" VISIBLE), c/w 330J GAUGE COCKS, NACE (1770 PSI)
LG-101	1	QUEST	REFLEX LEVEL GAUGE, 51RM (7 7/8" VISIBLE), c/w 330J GAUGE COCKS, NACE (1770 PSI)
LG-140/200	2	HAWK-EYE	TANK LEVEL/RATE GAUGE, MODEL 5700
LSH-100	1	LINC	ELECTRIC LEVEL SWITCH, 1471-42+2" FLOAT EXT., 5000# POLYPROPYLENE FLOAT, 2000# BODY, NACE
M-130	1	ROOTS	F.G. FLOW METER, #HC - 175, [cubic meter] READOUT
P-140	1	WILLIAMS	CHEMICAL INJECTION PUMP, MODEL CP250-V225-CRIC
P-150	1	TEXTTEAM	METHANOL INJECTION PUMP, MODEL 5113LP, 3/8" PLUNGER c/w MICROSWITCH
P-160	1	TEXTTEAM	METHANOL INJECTION PUMP, 3/8" PLUNGER MODEL 50031 ABW01 c/w MICROSWITCH
PC-100	1	FISHER	PRESS. CONTROLLER, #C1, 6-30#, 0-3000#, REVERSE ACTING
PCV-100	1	CVS	CONTROL VALVE, 3"-2500# HPT-60, F.C., NACE, 2 5/16" TRIM
PI-100/101	2	WIKA	PRESS. GAUGE, 4" DIAL, 0-2000 PSIG DUAL SCALE, SS CASE & TUBE
PI-102	1	WIKA	PRESS. GAUGE, 2 1/2" DIAL, 0-160 PSIG DUAL SCALE, BRASS BOURDON
PI/106-108	3	WIKA	PRESS. GAUGE, 2 1/2" DIAL, 0-60 PSIG DUAL SCALE, BRASS BOURDON
PI-110	1	WIKA	PRESS. GAUGE, 2 1/2" DIAL, 0-60
PRV-101	1	FISHER	REGULATOR, 1" NPT 627, STEEL BODY, 1/8" ORIFICE, 70-150 PSIG RANGE, ALUM. TRIM
PRV-102-107	6	FISHER	REGULATOR, 1/4" NPT 67CFR, 5-35 PSI RANGE, STD. TRIM, VENTED BONNET
PRV-108	1	FISHER	REGULATOR, 1/4" NPT 67CFR, 5-35 PSI RANGE, STD. TRIM, VENTED BONNET
PRV-140	1	FISHER	REGULATOR, 1/4" NPT 67CFR, 0-100 PSI RANGE, STD. TRIM, VENTED BONNET
PSH-100	1	CCS	PRIMS. SWITCH L.O. MODEL 6800-CZE-22, SET @ 11032 kPa RISING
PSL-100	1	CCS	PRIMS. SWITCH L.O. MODEL 6800-CZE-18, SET @ 700 kPa FALLING
PSV-100	1	CROSBY	RELIEF VALVE: 1.5F2.5JOSES2N2, NACE, 1"-900# x 2 1/2"-300#, SET @ 1770 PSIG
PSV-101	1	TAYLOR	RELIEF VALVE, 1" x 1" NPT, MODEL 8200E, SET @ 150 PSIG, STD TRIM
PSV-106/140	2	NUPRO	1/4" NPT PSV, #SS-4R3AS, ORANGE SPRING, SET @ 1770 PSIG
PSV-107	1	NUPRO	1/4" NPT PSV, #SS-4R3AS, RED SPRING, SET @ 5000 PSIG
PT-100	2	ROSEMOUNT	3051 PRESS. TRANS. c/w BRACKET, SHIP LOOSE, CUSTOMER SUPPLIED
PY-100	1	MOORE	LOW SELECT, 61FE
STR-100	2	ALTA	STRAINER, 2"-900# RF, NACE TRIM, 13 3/4" F/F
T-100	1	WIMTEEL	STORAGE TANK, 500 GALLON, SINGLE WALL STEEL
TE-110	1		RTD, CUSTOMER SUPPLIED, w/ 1" THERMOWELL
TI-101	1	TREND	TEMP GAUGE 3" x 4" LG, -20°F TO 160°F DUAL SCALE c/w 1/2" x 1" x 4" 316SS TW
V-130	1	MOSS	8" FUEL GAS SCRUBBER

\*\* - CUSTOMER SUPPLIED

\* - DENOTES RECONDITIONED EQUIPMENT

VALVE LIST

ITEM	QTY	BRAND	DESCRIPTION
VB038	2	CIS-CAN	BALL VALVE, 3/8" NPT, STD TRIM (SUPPLIED WITH HEATERS)
VB050	6	MAS	BALL VALVE, 1/2" NPT 2000#, NACE TRIM
VB051S	4	WKM	BALL VALVE, 1/2" NPT 3000#, NACE TRIM, FULL PORT
VB050S	4	WKM	BALL VALVE, 1/2" NPT 3000#, NACE TRIM, REG. PORT
VB075S	8	WKM	BALL VALVE, 3/4" NPT 3000#, NACE TRIM
VB075HP	1	JAG	BALL VALVE, 3/4" NPT 6000#, NACE TRIM
VB100	9	MAS	BALL VALVE, 1" NPT 2000#, NACE TRIM
VB110	1		BALL VALVE, 1" NPT 2000#, F.P., NACE TRIM
VB209	17	JAG	BALL VALVE, 2"-900#, NACE TRIM, REG. PORT
VCH025	3	LOTECH	CHECK VALVE, 1/4" NPT 6000#, 316 SS
VCH050	6		SWING CHECK VALVE, 1/2" NPT, NACE
VCH075	4		LIFT CHECK VALVE, 3/4" 800# NPT, NACE TRIM
VCH075HP	6		LIFT CHECK VALVE, 3/4" CLASS 1500, NACE
VCH100	1		LIFT CHECK VALVE, 1" CLASS 800, NACE
VCH201	1		SWING CHECK VALVE, 2"-150#, RF REG. PORT, NACE TRIM
VCH209	2	NAVCO	SWING CHECK VALVE, 2"-900#, RF REG. PORT, NACE TRIM
VCH409	1	NAVCO	SWING CHECK VALVE, 4"-900#, NACE TRIM, REG. PORT
VGL075S	3		GLOBE VALVE, 3/4" CLASS 1500, NACE
VGL075HP	1		GLOBE VALVE, 3/4" CLASS 2500, NACE
VGL209	3	KF	GLOBE VALVE, 2"-900# RF, NACE TRIM
VN025	12	PGI	NEEDLE VALVE, 1/4" F x 1/4" F, CM2-3-F22T-B-V, CARBON STEEL BODY
VN025S	3	PGI	NEEDLE VALVE, 1/4", 316 SS
VN050	4	PGI	NEEDLE VALVE, 1/2", 316 SS
VN075	6	PGI	NEEDLE VALVE, 3/4" M x 1/2" F, CM2-3-M64T-B-V, 316 SS

REVISIONS

No	DESCRIPTION	DATE	DRAWN	APP'D	DATE
----	-------------	------	-------	-------	------

TITLE:

36"-900# SOUR 3 PH SEPARATOR PACKAGE  
(2500 ANSI INLET), WITH SCADA FOR -2  
PROCESS & INSTRUMENTATION DIAGRAM