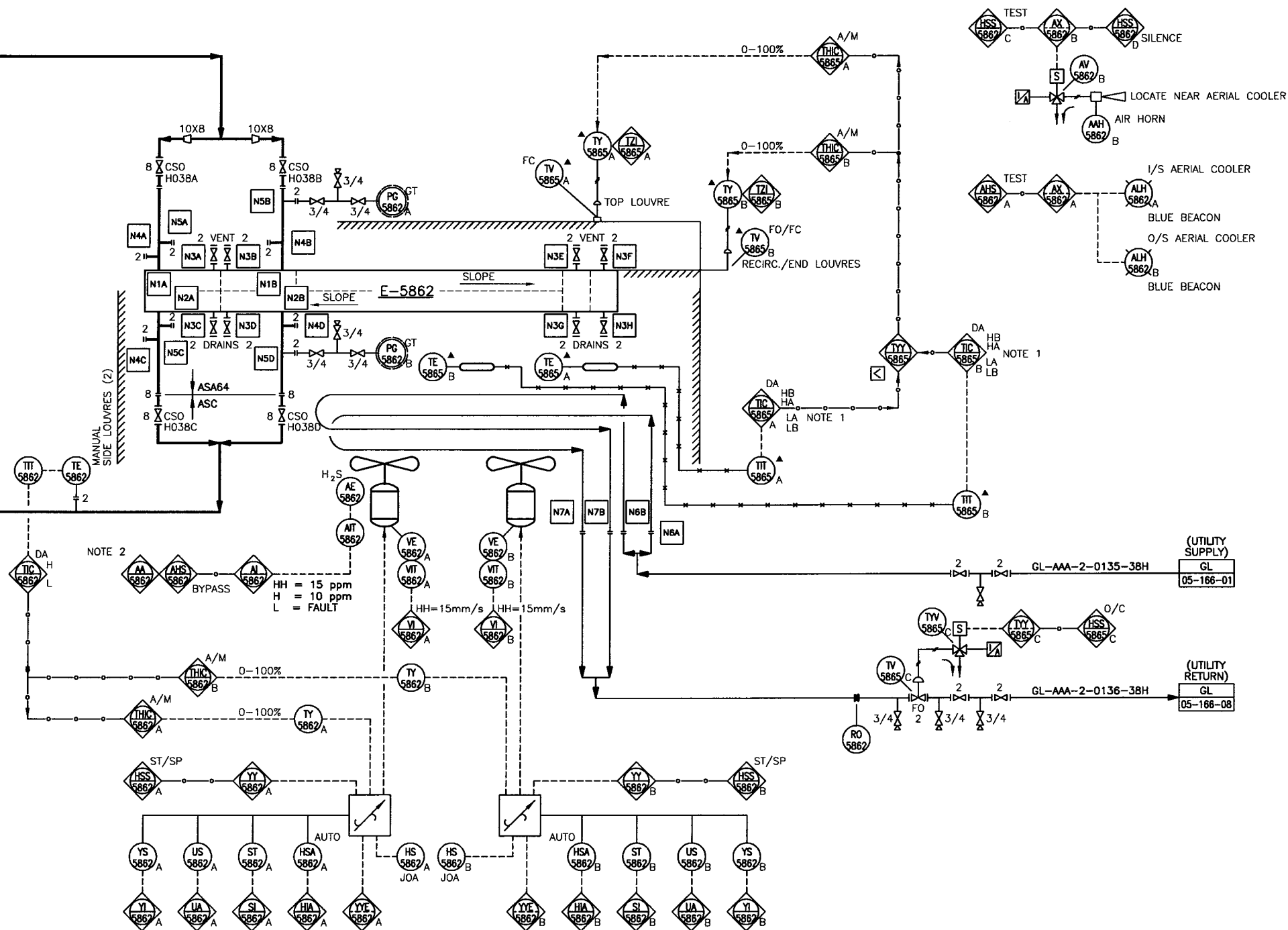


E-5862
AMINE REGENERATOR O/H CONDENSER
DESIGN PRESSURE: 345 kPa
DESIGN TEMP.: -45/149°C
DRIVERS: 18.6 kW AT 1800 RPM X 2
C.A.: 6.4 mm

OVERHEAD VAPOURS FROM
FC1-42-PID-05-118-01 AG-ASA64-10-0047-51H-GT1
AMINE REGENERATOR V-5860 DO NOT POCKET

REFLUX TO AMINE
FC1-42-PID-05-121-01 RA-ASC-8-0010-38H-GT1
REFLUX DRUM V-5864 DO NOT POCKET



NOTES:

1. OPEN TV-5865 ON LOW COOLER PLENUM TEMPERATURE.
2. ALARM EVERY 30 MINUTES WHEN IN BYPASS MODE.
3. ALL INSTRUMENT TAG NUMBERS SHOWN ON THIS P&ID SHALL BE PREFIXED BY "05-".

| DRAWING NUMBER | REFERENCE DRAWINGS | STAMPS | REV NO | REVISION | DATE | DRN | CKD | DES | LDE | PE | DESIGNED BY | CONSULTANT LOGO | TITLE | SCALE | WORK PACKAGE # | PROJECT NO. | DRAWING | REVISION |
|----------------|--------------------|--------|--------|-------------------------|----------|-----|-----|-----|-----|----|-------------|-----------------|---|-------|----------------|-------------|----------------------|----------|
| | | | 01 | ISSUED FOR CONSTRUCTION | 09/09/01 | SR | | | | | DB | DPH FOCUS | FOSTER CREEK COMMERCIAL PLANT SULPHUR RECOVERY FACILITY PIPING & INSTRUMENTATION DIAGRAM AMINE REGEN. O/H CONDENSER E-5862 | NTS | | 9971 | FC1-42-PID-05-120-01 | OH |

PERMIT TO PRACTICE
09.15.09

PERMIT NUMBER: P 9603