

**F-2-5170****REFRIGERANT FILTER DRYER**

MAKE: SPORLAN - C40016

DESIGN: 2758 KPag @ -46°C/204°C, CA: 1.6mm

ELEMENTS: (4) RPE-100

WEIGHT: 25 KGS

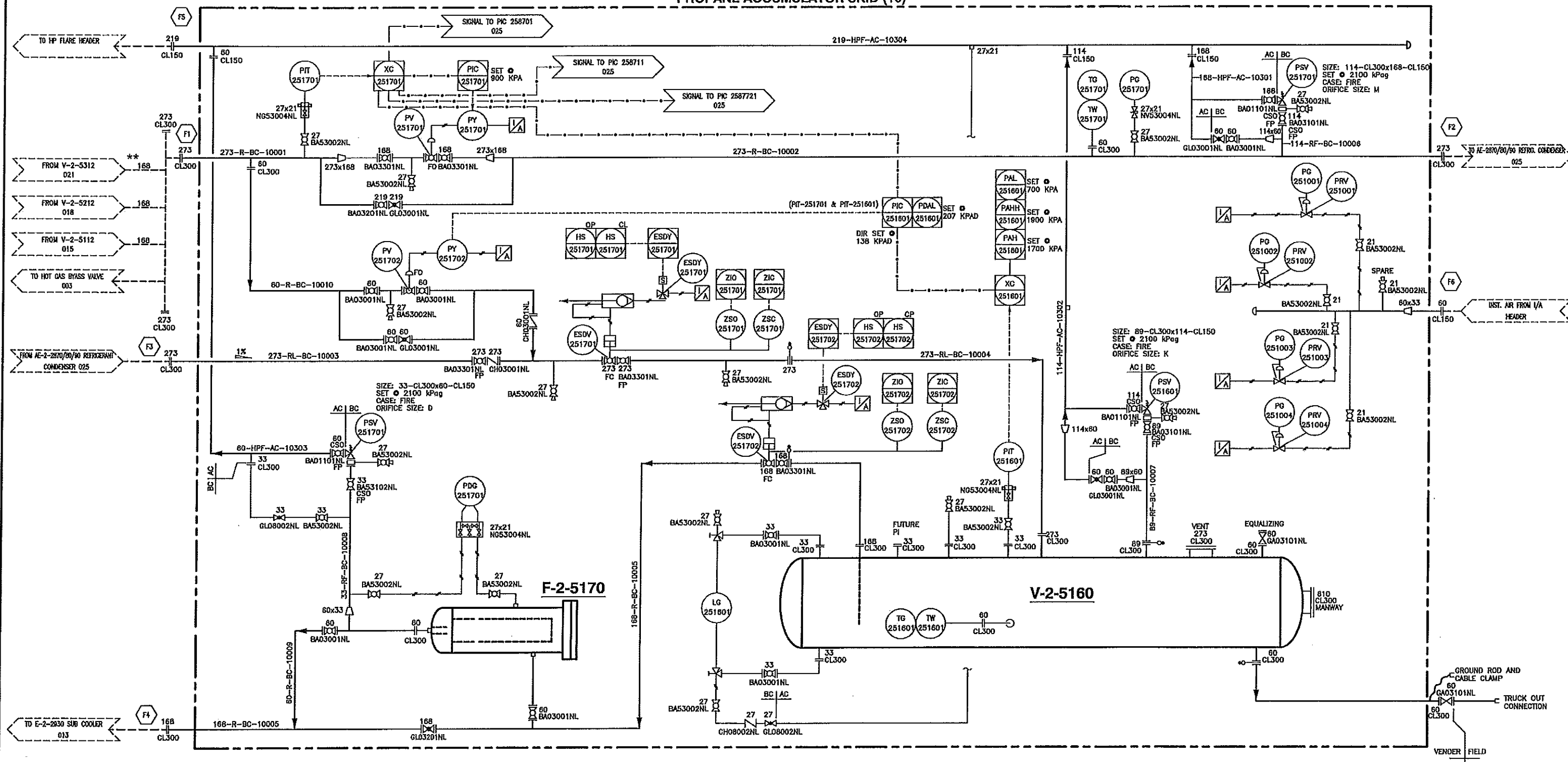
**V-2-5160****REFRIGERATION ACCUMULATOR**

SIZE: 1676mm O.D. x 12192mm S/S

DESIGN: 2100 KPag @ -45°C/149°C, C.A.: 1.6mm

SHELL MATERIAL: SA-516-70N

HEAD MATERIAL: SA-516-70N

**PROPANE ACCUMULATOR SKID (10)****GENERAL NOTES**

- \* VALVES AND INSTRUMENTS SUPPLIED BY STARTEC AND SHIPPED LOOSE  
 \*\* VALVES AND INSTRUMENTS SUPPLIED BY OTHERS  
 --- FIELD PIPING BY OTHERS

**REVISIONS**

NO.	DATE	BY	AP'D	DESCRIPTION
A	17-02-16	GE		PRELIMINARY - ISSUED FOR REVIEW
0	17-04-13	PH		ISSUED FOR CONSTRUCTION
1	17-08-01	KC		ADDED SPEC BLIND AND DELETED DRAIN
2	17-08-10	KC		DELETED I/A HEADER NEEDLE VALVES & UPDATED AS SHOWN
3	18-01-15	KC		REVISED EQUIPMENT & INSTRUMENTATION TAGS FOR SKID NEW LOCATION

NO. DATE BY AP'D DESCRIPTION

**INFORMATION ONLY**

January 23, 2018

**STARTEC**  
 COMPRESSION & PROCESS LTD.  
 APEQA NO. P13139

 DRAWN: STARTEC  
 CHECKED: WDH  
 ENG. APPL: DATE

 DATE: 17-02-16  
 DATE: 18-01-20  
 DATE:

 CUSTOMER: ARC RESOURCES  
 c/o CORNERSTONE ENGINEERING LTD.  
 TITLE: GAS CHILLING UNIT -- P&ID  
 ACCUMULATOR SKID "10"  
 LSD: 13-07-80-14 W6M

 SCALE: N/A  
 DRAWING NO.: 17010-PR-PID-024  
 REV: 3

**M-2-5190/1/2**  
FAN MOTORS  
MAKE: MOORE (TEFC)  
RATING: 50 HP  
460/3/60  
SPEED: 1800 RPM  
VFD COMPATIBLE S.F. 1.15

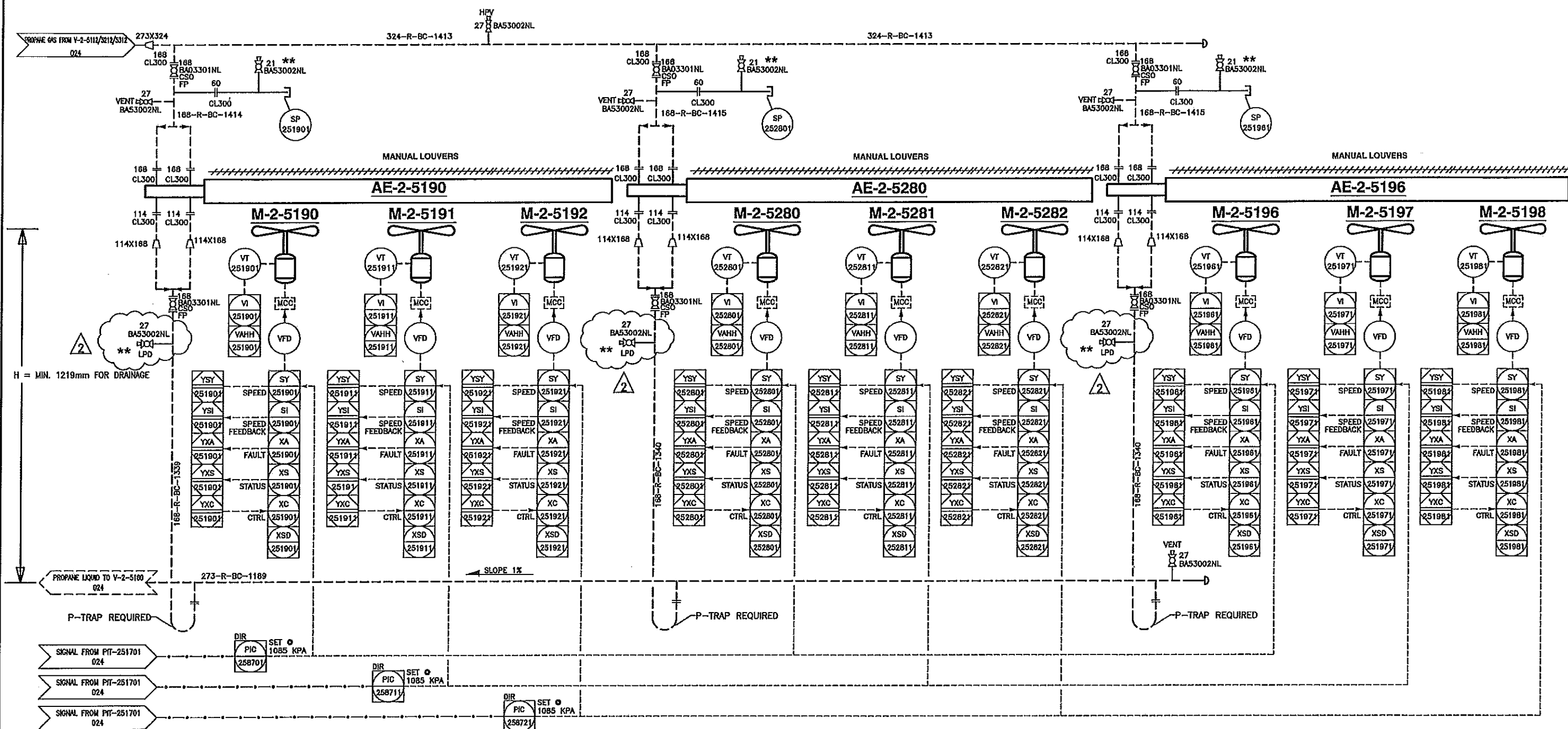
**AE-2-5190**  
REFRIGERANT CONDENSER  
MAKE: AIRCOOLED EXCHANGERS ACE-E120-3-50  
DUTY: 1924 kW  
DESIGN: 2100 KPag @ -45°C/149°C, C.A:1.6mm

**M-2-5280/1/2**  
FAN MOTORS  
MAKE: MOORE (TEFC)  
RATING: 50 HP  
460/3/60  
SPEED: 1800 RPM  
VFD COMPATIBLE S.F. 1.15

**AE-2-5280**  
REFRIGERANT CONDENSER  
MAKE: AIRCOOLED EXCHANGERS ACE-E120-3-50  
DUTY: 1924 kW  
DESIGN: 2100 KPag @ -45°C/149°C, C.A:1.6mm

**M-2-5196/7/8**  
FAN MOTORS  
MAKE: MOORE (TEFC)  
RATING: 50 HP  
460/3/60  
SPEED: 1800 RPM  
VFD COMPATIBLE S.F. 1.15

**AE-2-5196**  
REFRIGERANT CONDENSER  
MAKE: AIRCOOLED EXCHANGERS ACE-E120-3-50  
DUTY: 1924 kW  
DESIGN: 2100 KPag @ -45°C/149°C, C.A:1.6mm



GENERAL NOTES

\* VALVES AND INSTRUMENTS SUPPLIED BY STARTEC AND SHIPPED LOOSE  
\*\* VALVES AND INSTRUMENTS SUPPLIED BY OTHERS  
--- FIELD PIPING BY OTHERS

REVISIONS

NO.	DATE	BY	AP'D	DESCRIPTION
A	17-02-16	GE		PRELIMINARY - ISSUED FOR REVIEW
0	17-04-13	PH		ISSUED FOR CONSTRUCTION
1	17-08-01	KC		ADDED SP-228701/228801/228901
2	18-01-15	KC		REVISED EQUIPMENT & INSTRUMENTATION TAGS FOR SKID NEW LOCATION

**INFORMATION ONLY**

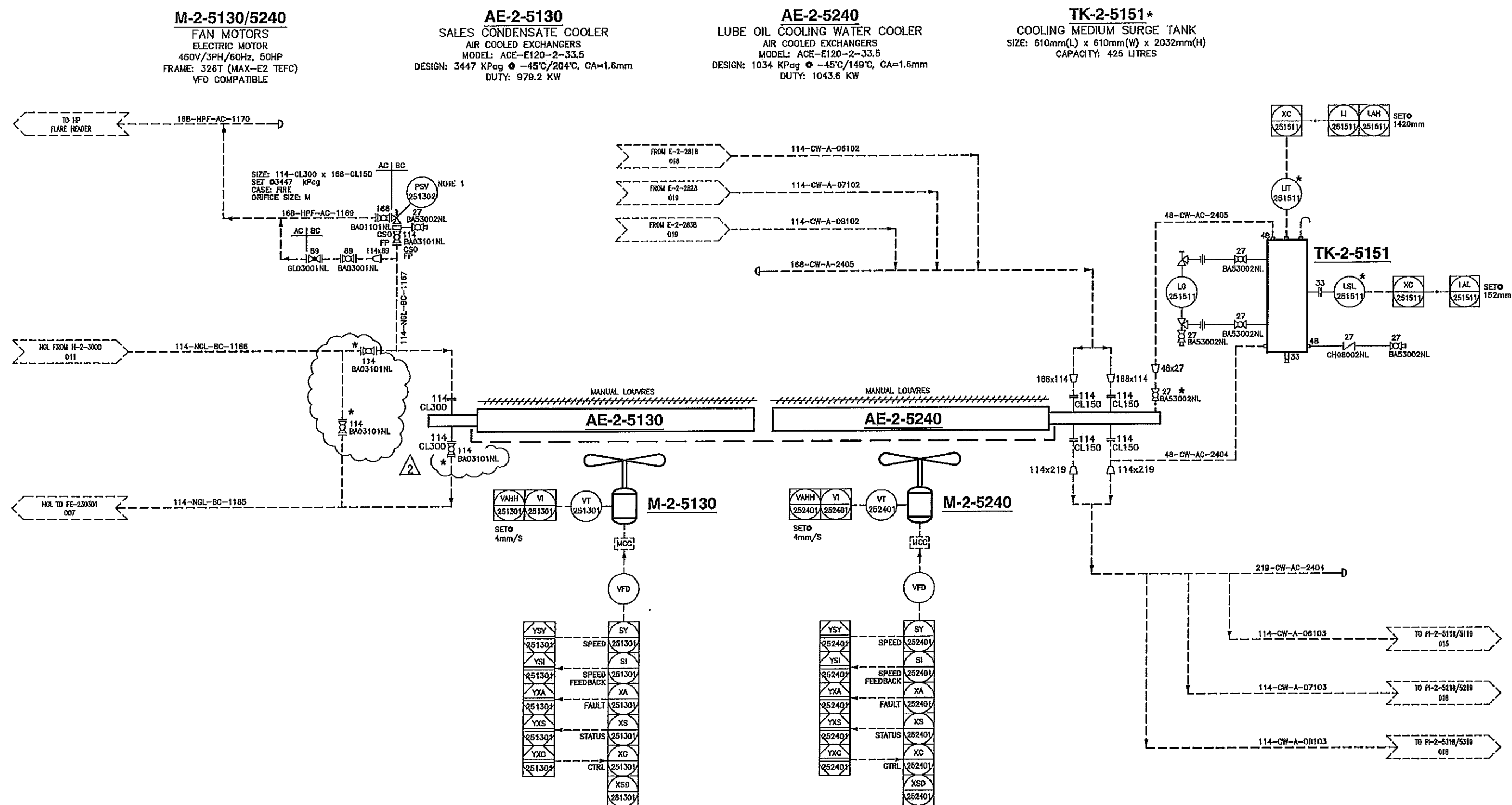
January 23, 2018



CUSTOMER  
ARC RESOURCES  
c/o CORNERSTONE ENGINEERING LTD.

TITLE  
GAS CHILLING UNIT P&ID  
REFRIGERANT CONDENSERS  
LSD: 13-07-80-14 WGM

SCALE  
N/A  
DRAWING NO.  
17010-PR-PID-025  
REV.  
2



## GENERAL NOTES

NOTE:  
1. ALL GRADING BELOW SALES CONDENSATE COOLER IS CONSIDERED FLAT.

## REVISIONS

NO.	DATE	BY	AP'D	DESCRIPTION
A	17-02-16	GE		PRELIMINARY -- ISSUED FOR REVIEW
O	17-04-13	PH		ISSUED FOR CONSTRUCTION
1	17-08-01	PH		UPDATED PSV-230202 INFO.
2	18-01-15	KC		REVISED EQUIPMENT & INSTRUMENTATION TAGS FOR SKID NEW LOCATION

INFORMATION ONLY

---

January 23, 2018

# INFORMATION ONLY

**January 23, 2018**



CUSTOMER	ARC RESOURCES
	c/o CORNERSTONE ENGINEERING LTD.

TITLE	GAS CHILLING UNIT P&ID PRODUCT COOLER & CLOW COOLER LSD: 13-07-80-14 W6M
-------	--

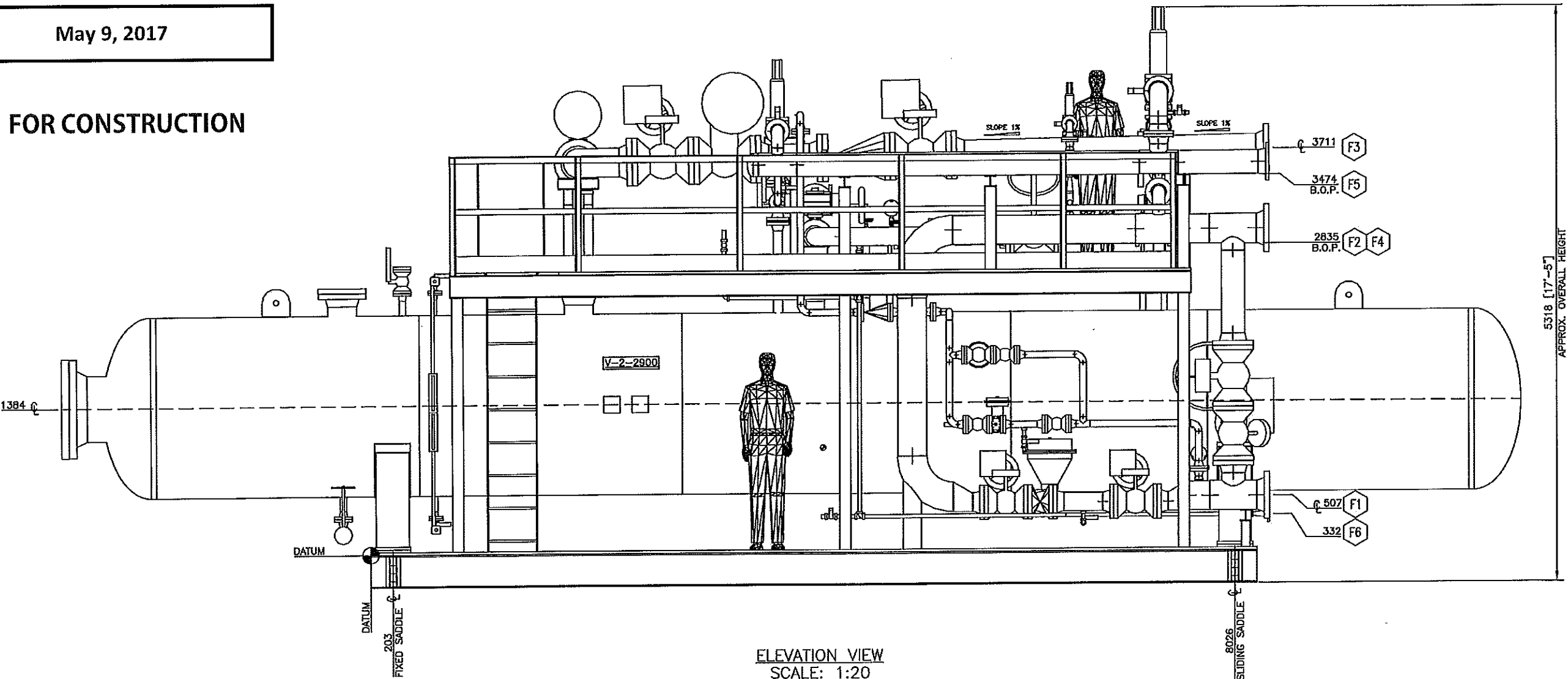
SCALE	DRAWING NO.	REV.
N/A	17010-PR-FID-028	2

\*ALL VALVES AND INSTRUMENTS SUPPLIED BY STARTEC AND SHIPPED LOOSE  
-- FIELD PIPING BY OTHERS



May 9, 2017


FOR CONSTRUCTION



ELEVATION VIEW  
SCALE: 1:20

- |   |   |
|---|---|
| <b>F1</b> 273 - CL.300 RF<br>REFRIGERANT VAPOUR FROM REFRIGERANT COMPRESSORS<br>PROJ. - 118 | <b>F5</b> 219 - CL.150 RF<br>HP FLARE HEADER<br>PROJ. - 118 |
| <b>F2</b> 273 - CL.300 RF<br>REFRIGERANT VAPOUR TO REFRIGERANT CONDENSER<br>PROJ. - 118     | <b>F6</b> 60 - CL.150 RF<br>IA HEADER<br>PROJ. - 118        |
| <b>F3</b> 273 - CL.300 RF<br>REFRIGERANT LIQUID FROM REFRIGERANT CONDENSER<br>PROJ. - 118   |   |
| <b>F4</b> 168 - CL.300 RF<br>REFRIGERANT LIQUID TO SUB-COOLER<br>PROJ. - 118                |   |

GENERAL NOTES:  
1. ALL TAIL DIMENSIONS FROM REFERENCE POINT.

REFERENCE DRAWINGS																REVISIONS																		GAS CHILLING UNIT ACCUMULATOR SKID "10" LSD: 03-09-81-16 W6M		 <b>STARTEC</b> COMPRESSION & PROCESS LTD. APEGA NO. P13139	
DWG. NO.	DESCRIPTION	DWG. NO.	DESCRIPTION	NO.	DATE	BY	AP'D	DESCRIPTION	NO.	DATE	BY	AP'D	DESCRIPTION	SHIPPING WEIGHT 27177 Kg	SURFACE PREPARATION -	PRIMER -	PAINT -	DRAWN G.ELLIOTT	DATE 17-02-16	CUSTOMER ARC RESOURCES																	
				0	17-05-02	KC		ISSUED FOR CONSTRUCTION		05-04-17		WAV						CHECKED -	DATE -	c/o CORNERSTONE ENGINEERING LTD.																	
																		ENG. APPL. WAV	DATE 05-04-17	TITLE GAS CHILLING UNIT ACCUMULATOR SKID "10" GENERAL ARRANGEMENT DRAWING ELEVATION VIEW																	
																		PROD. APPL. WAV	DATE -																		
																		ABS VESSEL DRAWING NO. N/A		SCALE 1:20																	
																		VESEL JOB NO. N/A		DRAWING NO. 17010-ME-GAD-002																	
																				REV. 0																	



