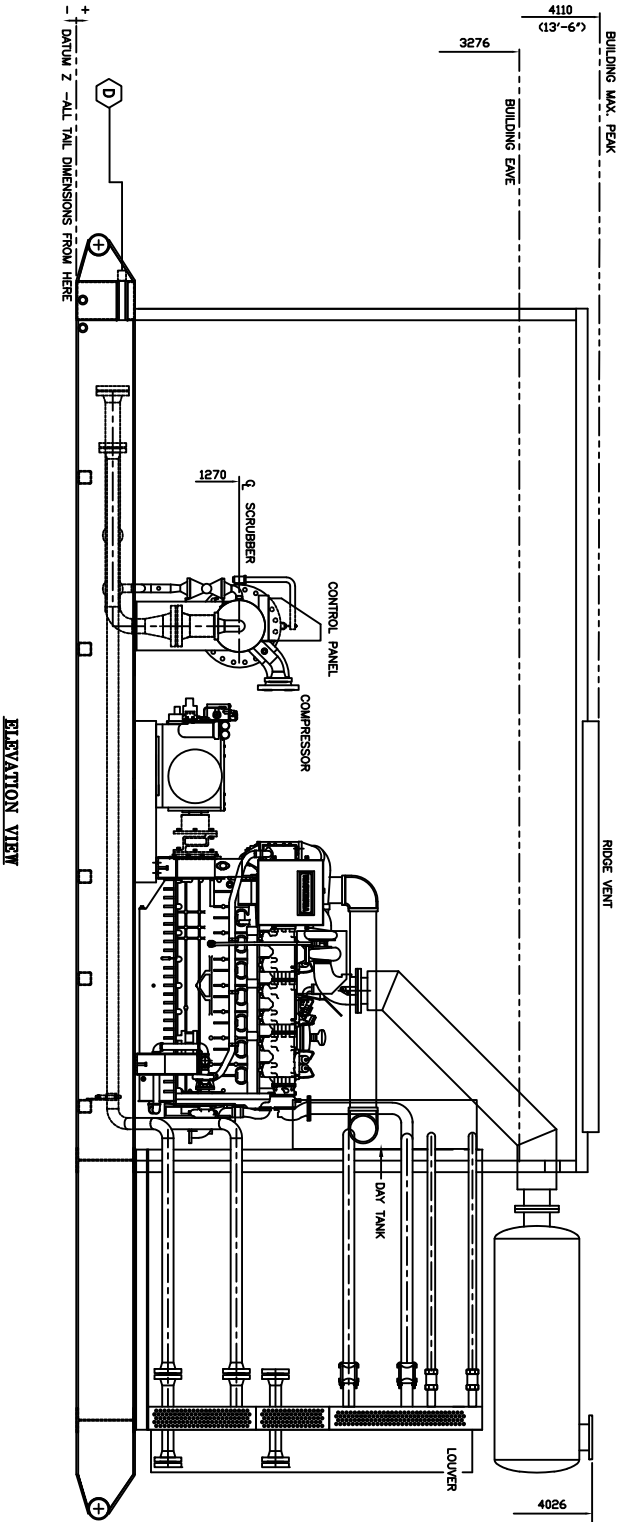


SERVICE CONNECTIONS		
ITEM	CONNECTION	SIZE RATING
D	COALESCE DRAIN	1 1/2" NPT



ELEVATION VIEW

BUILDING OPTIONS	
OPT #	DESCRIPTION
540	
541	
542	

MISCELLANEOUS OPTIONS	
OPT #	DESCRIPTION
336	
338	
340	
355	
426	
520	
521	
530	
532	

BUILDING SPECIFICATIONS:

SELF FRAMING METAL BUILDING 14' WIDE x 22'1 1/2" LONG x 9'3" WALL HEIGHT.

ROOF GLAZED 11/2"

INTERIOR LINER: 24ga ALUMINUM WHITE.

EXTERIOR LINER: 24ga GALVANIZED STEEL.

INSULATION: WALLS/ROOF R12 FIBREGLOSS. NO VAPOR BARRIER C/W (2) DOUBLE GLAZED SLIDING WINDOWS, 40"x40" WITH SCREENS. WINDOW, FRAMING BARS AND CHECK CHAINS.

(2) DOUBLE GLAZED SLIDING WINDOWS, 40"x40" WITH SCREENS.

(2) WALL VENTS, 12"x16" WITH SLIDERS AND SCREENS.

(1) RIDGE VENT, 6'x10', CHAIN ADJUSTABLE, WITH SCREEN.

NOTES:

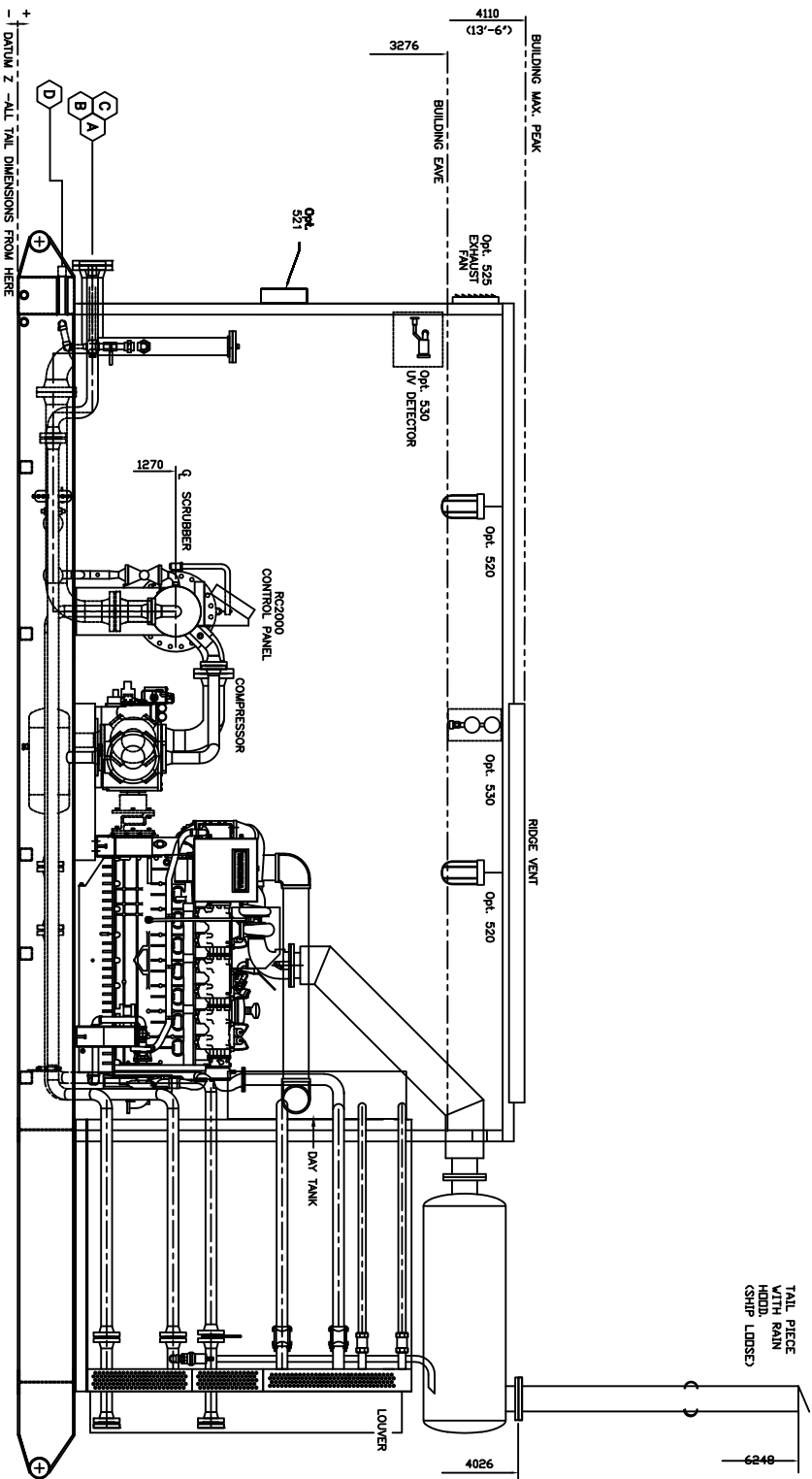
1) ALL DIMENSIONS ARE IN MM UNLESS OTHERWISE NOTED.

2) OVERALL AND MINIMUM DIMENSIONS TO BE OBSERVED. ALL OTHERS MAY BE MODIFIED TO ACCOMMODATE FRAMING.

3) WARRANTY ON CUSTOMER REQUESTED SPECIAL OPTIONS (CODE 777) IS LIMITED TO MATERIAL AND WORKMANSHIP.

PAINT & PRIMER SPECS.	
PRIMER	ENAMEL82003 RUSTEX GREY
FINISH PAINT	TOWER T2406-906 SILVER GREY
FLOOR PAINT	ESSO BLACK

NEW DRAWING FOR 2000-022		2000
(K/LB/PRODUCT/GA000235)		06.01
REV.	DESCRIPTION	DATE
A		BY
BTB Compressors		
DATE	SCALE	TITLE
MAR 19.97	1:40	GENERAL ARRANGEMENT
CHK'D	APP'D	UNIT
DRW'N	SYSTEM	BS305 FRAME UNIT
KLS	ACAD13	
DWG. NO. GA-2000-022-A		SHEET 5 OF 5
FILE: GA0000-022ALING		2000.06



ELEVATION VIEW

SERVICE CONNECTIONS

ITEM	CONNECTION	SIZE	RATING
A	SUCTION	6"	300#RT
B	DISCHARGE	3"	800#RT
C	UTILITY GAS INLET	1 1/2"	NPT
D	COALESCE DRAIN	1 1/2"	NPT

BUILDING OPTIONS

OPT #	DESCRIPTION
540	
530	GAS DETECTION
541	BUILDING WHITE INTERIOR LINER
542	BUILDING EXHAUST FAN
525	

MISCELLANEOUS OPTIONS

OPT #	DESCRIPTION
336	
335	
335	SEALED SWID PAN-LONG LEAD ORDER
426	
520	
521	110 VAC BUILDING LIGHTS (REQUESTED)
530	GAS DETECTION LEL SENSOR (REQUESTED)
532	FIRE DETECTION LIV SENSOR (REQUESTED)

BUILDING SPECIFICATIONS:

SELF FRAMING METAL BUILDING 14' WIDE x 22'1 1/2" LONG x 9'3" WALL HEIGHT.
ROOF: 26ga ALUMINUM WHITE.
INTERIOR LINER: 26ga GALVANIZED STEEL.
EXTERIOR LINER: 26ga GALVANIZED STEEL.
INSULATION: WALLS/ROOF R12 FIBERGLASS. NO VAPOR BARRIER C/W (2) DOUBLE GLAZED SLIDING WINDOWS, 40"x40" WITH SCREENS. WINDOW, FRAMING BARS AND CHECK CHAINS.
(2) DOUBLE GLAZED SLIDING WINDOWS, 40"x40" WITH SCREENS.
(2) WALL VENTS, 12"x18" WITH SLIDERS AND SCREENS.
(1) RIDGE VENT, 6"x110", CHAIN ADJUSTABLE, WITH SCREEN.

NOTES:

- 1) ALL DIMENSIONS ARE IN MM UNLESS OTHERWISE NOTED.
- 2) OVERALL AND MINIMUM DIMENSIONS TO BE OBSERVED. ALL OTHERS MAY BE MODIFIED TO ACCOMMODATE FRAMING.
- 3) WARRANTY ON CUSTOMER REQUESTED SPECIAL OPTIONS (CODE 777) IS LIMITED TO MATERIAL AND WORKMANSHIP.

PAINT & PRIMER SPECS.

PRIMER: ENAMEL82003 RUSTEX GREY
FINISH PAINT: TOWER 72406-906 SILVER GREY
FLOOR PAINT: ESSO BLACK

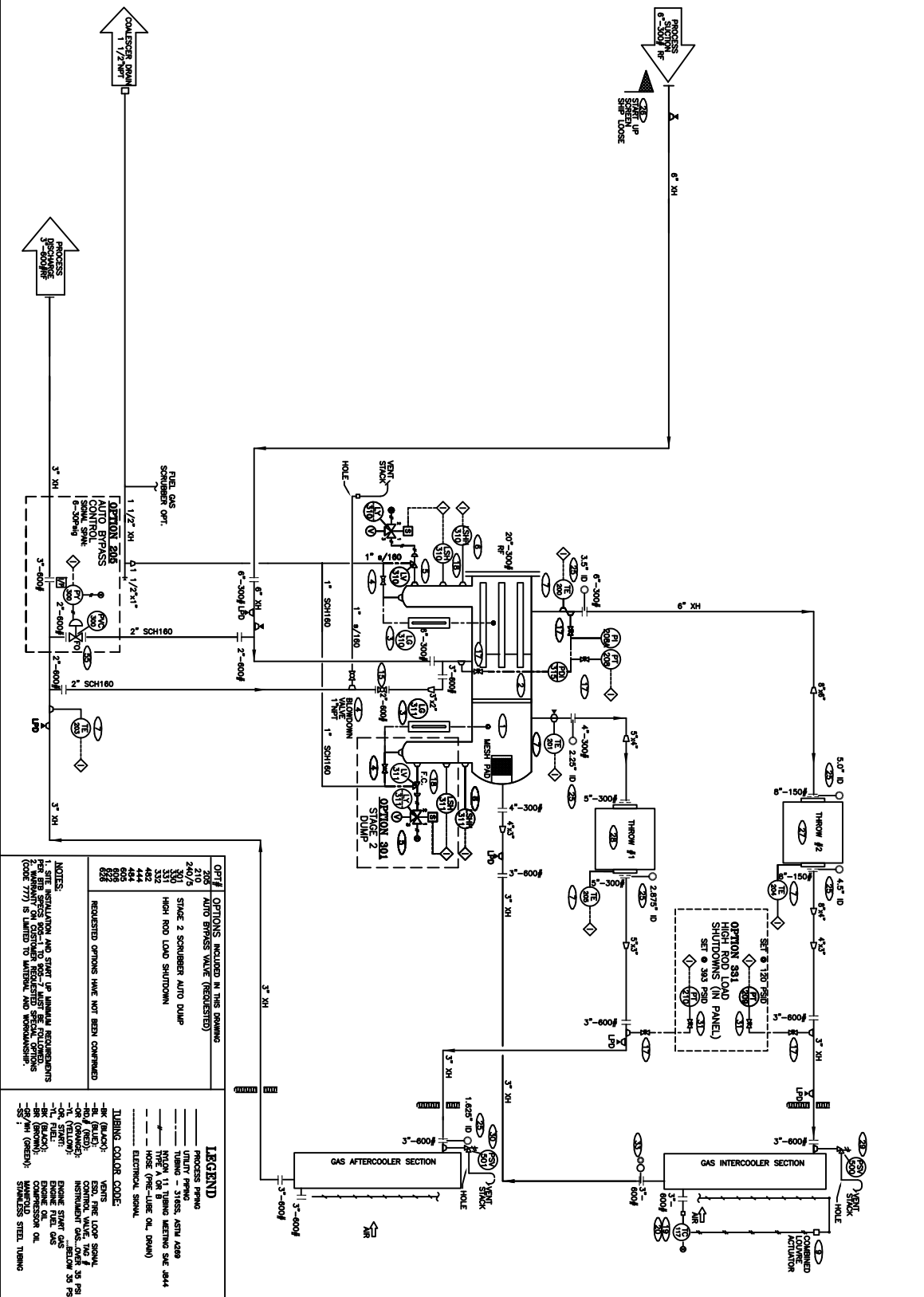
REVISED FOR CUSTOMER OPTIONS		2000	KLS
NEW DRAWING FOR 2000-022		09-28	
(K/LB/PRODUCT/GA000235)		2000	PS
REV. DESCRIPTION		DATE	BY
DATE: 00-09-26		SCALE: 1/4" = 1'-0"	TITLE: GENERAL ARRANGEMENT (ELEVATION)
CHK'D: APP'D:		SYSTEM: ACAD	DRWING: BS305 2 STAGE
KLS		DRWING: GA-2000-022-B	SHEET: 5 of 5
FILE: 00000-022B.DWG			ISS: 2000.06

20" BTB COLLESCER
WITH FILTER ELEMENTS (11)
740 PSIG WAMP @100°F

AIRTEL CYLINDERS
THROW #2 13" RU 230 PSIG WAMP
THROW #1 8" RU 635 PSIG WAMP

ANG BURY
COLUMBIA
IC SECTION 1315 WAMP @300°F
IC SECTION 1315 WAMP @300°F

PSV
PSV-500 SET @ 230 PSIG
PSV-501 SET @ 635 PSIG



OPT#	OPTIONS INCLUDED IN THIS DRAWING
200	20" BTB COLLESCER
201	20" BTB COLLESCER
202	20" BTB COLLESCER
203	20" BTB COLLESCER
204	20" BTB COLLESCER
205	20" BTB COLLESCER
206	20" BTB COLLESCER
207	20" BTB COLLESCER
208	20" BTB COLLESCER
209	20" BTB COLLESCER
210	20" BTB COLLESCER
211	20" BTB COLLESCER
212	20" BTB COLLESCER
213	20" BTB COLLESCER
214	20" BTB COLLESCER
215	20" BTB COLLESCER
216	20" BTB COLLESCER
217	20" BTB COLLESCER
218	20" BTB COLLESCER
219	20" BTB COLLESCER
220	20" BTB COLLESCER
221	20" BTB COLLESCER
222	20" BTB COLLESCER
223	20" BTB COLLESCER
224	20" BTB COLLESCER
225	20" BTB COLLESCER
226	20" BTB COLLESCER
227	20" BTB COLLESCER
228	20" BTB COLLESCER
229	20" BTB COLLESCER
230	20" BTB COLLESCER
231	20" BTB COLLESCER
232	20" BTB COLLESCER
233	20" BTB COLLESCER
234	20" BTB COLLESCER
235	20" BTB COLLESCER
236	20" BTB COLLESCER
237	20" BTB COLLESCER
238	20" BTB COLLESCER
239	20" BTB COLLESCER
240	20" BTB COLLESCER
241	20" BTB COLLESCER
242	20" BTB COLLESCER
243	20" BTB COLLESCER
244	20" BTB COLLESCER
245	20" BTB COLLESCER
246	20" BTB COLLESCER
247	20" BTB COLLESCER
248	20" BTB COLLESCER
249	20" BTB COLLESCER
250	20" BTB COLLESCER
251	20" BTB COLLESCER
252	20" BTB COLLESCER
253	20" BTB COLLESCER
254	20" BTB COLLESCER
255	20" BTB COLLESCER
256	20" BTB COLLESCER
257	20" BTB COLLESCER
258	20" BTB COLLESCER
259	20" BTB COLLESCER
260	20" BTB COLLESCER
261	20" BTB COLLESCER
262	20" BTB COLLESCER
263	20" BTB COLLESCER
264	20" BTB COLLESCER
265	20" BTB COLLESCER
266	20" BTB COLLESCER
267	20" BTB COLLESCER
268	20" BTB COLLESCER
269	20" BTB COLLESCER
270	20" BTB COLLESCER
271	20" BTB COLLESCER
272	20" BTB COLLESCER
273	20" BTB COLLESCER
274	20" BTB COLLESCER
275	20" BTB COLLESCER
276	20" BTB COLLESCER
277	20" BTB COLLESCER
278	20" BTB COLLESCER
279	20" BTB COLLESCER
280	20" BTB COLLESCER
281	20" BTB COLLESCER
282	20" BTB COLLESCER
283	20" BTB COLLESCER
284	20" BTB COLLESCER
285	20" BTB COLLESCER
286	20" BTB COLLESCER
287	20" BTB COLLESCER
288	20" BTB COLLESCER
289	20" BTB COLLESCER
290	20" BTB COLLESCER
291	20" BTB COLLESCER
292	20" BTB COLLESCER
293	20" BTB COLLESCER
294	20" BTB COLLESCER
295	20" BTB COLLESCER
296	20" BTB COLLESCER
297	20" BTB COLLESCER
298	20" BTB COLLESCER
299	20" BTB COLLESCER
300	20" BTB COLLESCER

MATERIAL LIST			
PART	ITEM	QTY	DESCRIPTION
C1541	1	1	SCRUBBER 20"25IG 740WAMP
C2082	2	11	FILTER ELEMENT, PECO PS-36-MS
C2086	3	2	LEVEL GAUGE, DANIEL 77RL 1/2"WT STD
C0484	4	3	BALL VALVE, 1"WT WKM B136-CS-02-CS
C0313	5	2	DUMP VALVE, 1"WT MURPHY DV B50
C0315	6	2	MURPHY L1100 1/2"WT BUTYROLAS SPOT
WKL	7	5	TYPE J THERMOCOUPLES
WKL	9	1	LOUVER ACTUATOR (GARDZ 501-12)
C4329	15	1	BALL VALVE, NUTSON 2"-600#FP
C4329	17	4	NEEDLE VALVE, CENTURY 3/4"x1/2" WACE
C4329	18	2	MURPHY L1200 2"WT BUTYROLAS SPOT
C2535	19	1	CONTROLLER TEMP KIMRAY HT18
C2532	20	1	KIMRAY 1" SS-18SS TV
C2532	25	1	ORIFICE GASKETS, AS NOTED (318SS)
C2532	26	1	SUCTION SCREEN, 6"-300#
C2532	27	1	CYLINDER, AIRTEL 13 1/2" RU C/W WCP
C2532	28	1	CYLINDER, AIRTEL 6" RU C/W WCP
C2532	29	1	PSV, MERCKER 1 1/2"WT/PT/2" FMT SET@ 230 PSIG
C2532	30	1	PSV, MERCKER 1 1/2"WT/PT/2" FMT SET@ 635 PSIG
C2532	31	2	NEEDLE VALVE, 1/4"x1/4"
C0407	35	1	SPEC BLIND 3"-600#
C2084	55	1	CONTROL VALVE, FISHER 357, 2"-800# WACE
C2084	66	1	WIDEST D.P. GAUGE
REV. 1			
REV. 2			
REV. 3			
REV. 4			
REV. 5			
REV. 6			
REV. 7			
REV. 8			
REV. 9			
REV. 10			
REV. 11			
REV. 12			
REV. 13			
REV. 14			
REV. 15			
REV. 16			
REV. 17			
REV. 18			
REV. 19			
REV. 20			
REV. 21			
REV. 22			
REV. 23			
REV. 24			
REV. 25			
REV. 26			
REV. 27			
REV. 28			
REV. 29			
REV. 30			
REV. 31			
REV. 32			
REV. 33			
REV. 34			
REV. 35			
REV. 36			
REV. 37			
REV. 38			
REV. 39			
REV. 40			
REV. 41			
REV. 42			
REV. 43			
REV. 44			
REV. 45			
REV. 46			
REV. 47			
REV. 48			
REV. 49			
REV. 50			
REV. 51			
REV. 52			
REV. 53			
REV. 54			
REV. 55			
REV. 56			
REV. 57			
REV. 58			
REV. 59			
REV. 60			
REV. 61			
REV. 62			
REV. 63			
REV. 64			
REV. 65			
REV. 66			
REV. 67			
REV. 68			
REV. 69			
REV. 70			
REV. 71			
REV. 72			
REV. 73			
REV. 74			
REV. 75			
REV. 76			
REV. 77			
REV. 78			
REV. 79			
REV. 80			
REV. 81			
REV. 82			
REV. 83			
REV. 84			
REV. 85			
REV. 86			
REV. 87			
REV. 88			
REV. 89			
REV. 90			
REV. 91			
REV. 92			
REV. 93			
REV. 94			
REV. 95			
REV. 96			
REV. 97			
REV. 98			
REV. 99			
REV. 100			

BTB Compressors

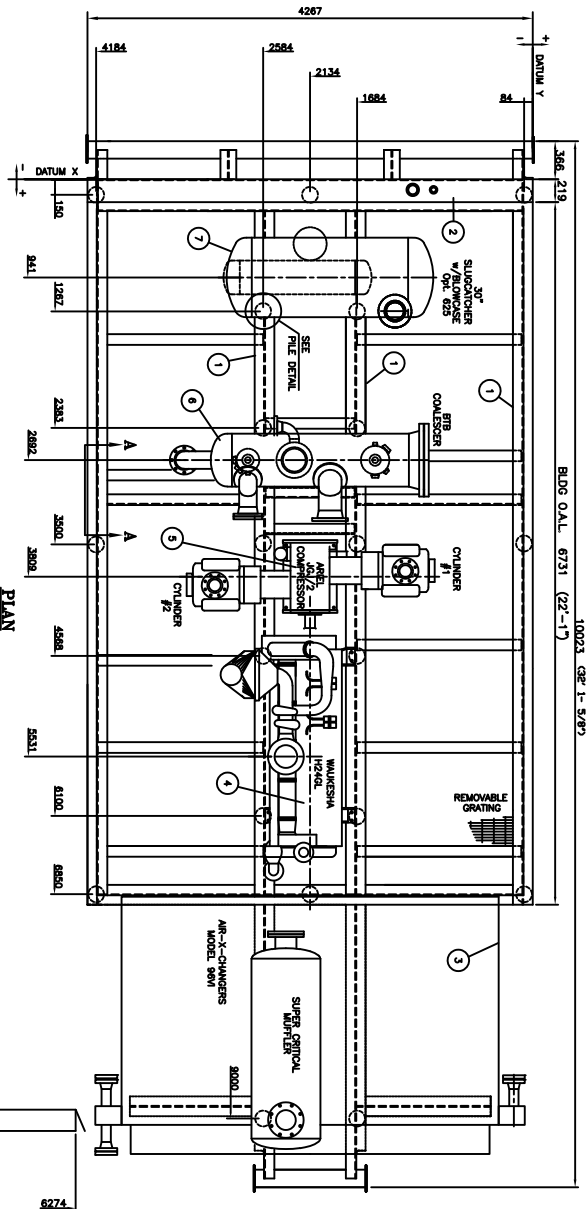
PROCESS FLOW SHEET

BS305 - 2 STAGE

PF-2000-022-D

1 of 5

09/09



MATERIAL LIST

ITEM	QTY	DESCRIPTION	WEIGHT (lb)
1	133#	WF 18"x50" SMD COMPONENT	
2	14#	HSS 18"x12"x3/8" SMD COMPONENT	
3	1	COOLER, 96"	11550
4	1	ENGINE, WALKESHA H24GL	7200
5	1	COMPRESSOR(1810), PEDISTAL(2800), & CHS	7830
6	1	COOLER 20"	2800
7	1	SLUICATCHER 30"(4000) & BLOWCASE 12"(1000)	5000
8	1	BS30 BUILDUP(1008 ft*2 X 3.3 + 4X100 lb/DR)	
9	1	SMD (12800) & PIPING (3371)	16171

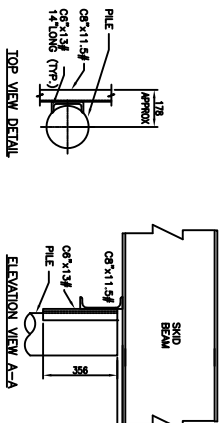
TOTAL WEIGHT:

- NOTES
1. CENTRE RUNNERS HAVE ACCESS DOORS AT PILE LOCATIONS
○ ON SEALED SMD BASE PNL.
 2. REFER TO BTB 905-3 FOR DETAILS.
 3. BACK FILL & COMPACT PRIOR THE COMPRESSOR SMD INSTALLATION.
 4. ALL DIMENSIONS IN MM UNLESS OTHERWISE SPECIFIED.
 5. REAR BUMPER BAR IS DESIGNED TO ACCOMMODATE A TWO POINT LIFT. ATTACH CABLES TO OUTER SECTION NEAR MAIN STRUCTURAL CHANNELS.

SHIPPING DATA	
UNIT SHIPPING WEIGHT:	48000lb
	21800kg
UNIT SHIPPING HEIGHT:	15'-6"
	4600 mm
UNIT SHIPPING WIDTH:	14'-6"
	4400 mm
UNIT SHIPPING LENGTH:	32'-11"
	10033 mm

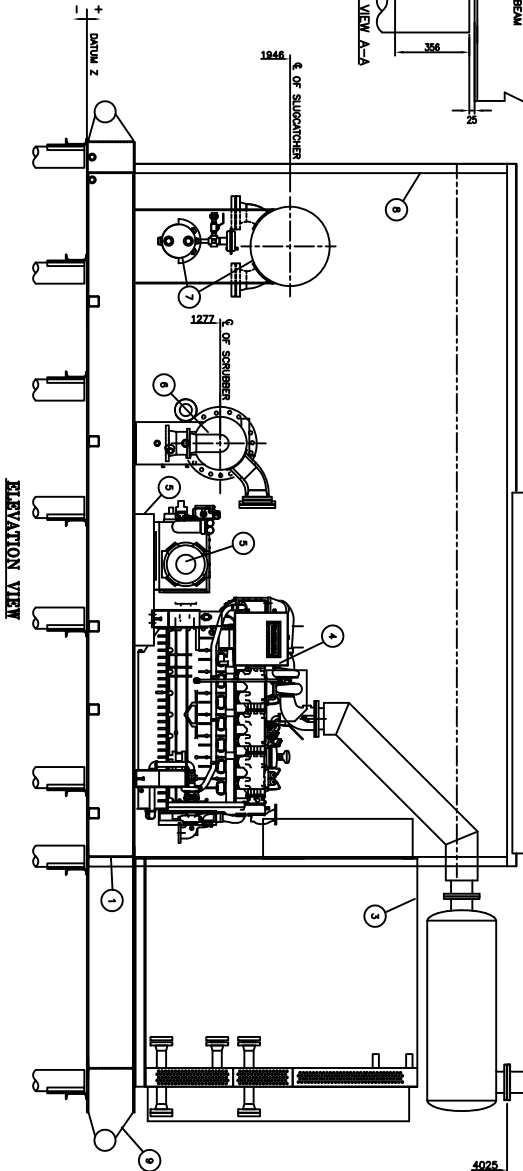
NATURAL FORCES	
UNBALANCED FORCES (@ 1800 RPM)	
TYPE	PRIMARY
FORCES (KIPF)	SECONDARY
VERTICAL	0
HORIZONTAL	0.16
COUPLES (KIP FT)	0.03
VERTICAL	4.23
HORIZONTAL	9.61
	0
	2.36

PILE DETAIL



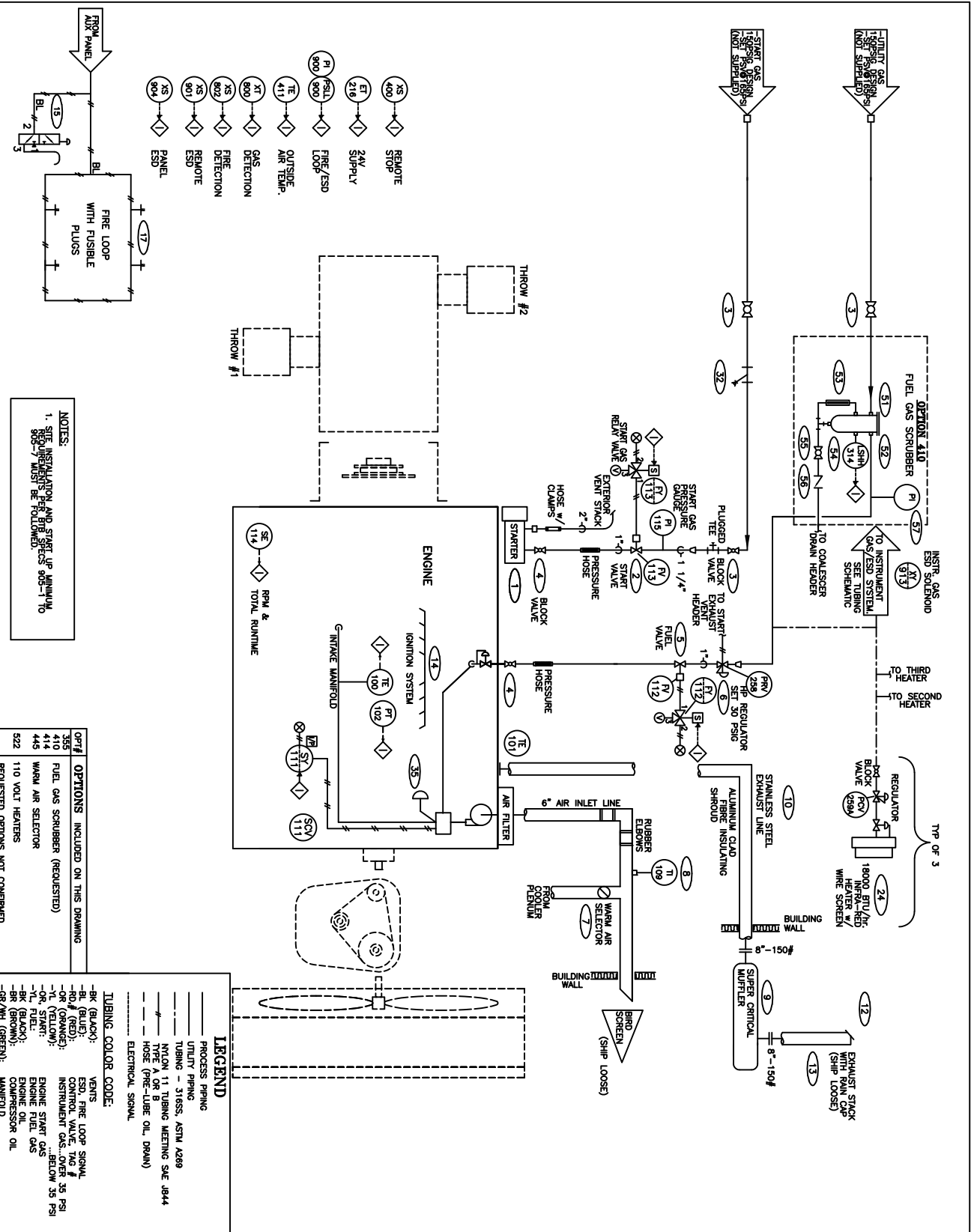
ELEVATION VIEW A-A

TOP VIEW DETAIL



ELEVATION VIEW

NEW DRAWING FOR 2000-022		2000 GRT
(K:\WP\PRODUCTS\A0023)		04.05
REV.	DESCRIPTION	DATE BY
A	NEW DRAWING FOR 2000-022	2000 GRT
(K:\WP\PRODUCTS\A0023)		04.05
DATE	SCALE	TITLE
2000.03.15	1:48	INSTALLATION DRAWING
CHK'D	APP'D	SMD AND PILE DATA
		BS30S
DRAWN	SYSTEM	DATE NO.
GRT	ACT'L	FD-2000-022-A
P.E. PD2000-022-A.DWG		SHEET 1
		ISS. 2000.03



MATERIAL LIST

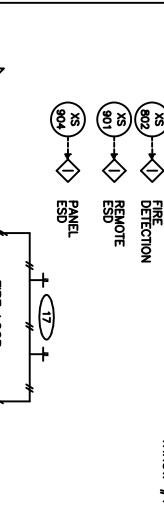
PART	ITEM	QTY	DESCRIPTION
02299	1	1	STARTER, IR 150 LFCE-21-RH6 STARTER
02307	2	1	GAS VALVE, IR SRV 125 1 1/4" NPT
01865	3	3	BALL VALVE, 1 1/2" NPT NAWCO C/W LATCH
00481	4	2	BALL VALVE, 1" NPT NAWCO C/W LATCH
00171	5	1	GAS VALVE, FISHER 118-129/16" ORifice
01214	6	1	REGULATOR, FISHER 627E-198, 1" NPT, 1/2" ORifice
01273	7	1	WARM AIR SELECTOR
00481	8	1	TEMP. MONTROD STROZAK-40" - 1207" LIQUID FILLED
00311	9	1	SILEX, JC-8-50 MUFFLER
01216	10	1	EXHAUST LINE, 8"
01062	12	1	EXHAUST RAIN CAP, 8"
02516	13	1	EXHAUST STACK, 8"
02077	14	1	CPUG5 IGNITION SYSTEM, ALTRONIC
02013	15	1	RED RING CONTROL VALVE, AMOT 4407-CA
01546	17	4	FUSIBLE PLUG, SWAGELOK SS-4-FTA-255, 3/8"
02295	24	3	HEATER, CANADONE, 120V
01726	35	1	STRAINER, ALTA 1 1/2" NPT
01972	51	1	FUEL FILTER/SCRUBBER BRB
02906	53	1	FILTER ELEMENT, PECO FG-24-MS
02019	54	1	LEVEL GAUGE, DANIEL 71RL 1/2" NPT
00481	55	1	LEVEL SWITCH, MURPHY, L1100, 1 1/2" NPT
01080	56	1	CHECK VALVE, NEMCO 1" NPT
02487	57	1	WIKO PI

REV.	DESCRIPTION	DATE	BY
D	AS-BUILT	2000	NO
C	ISSUED FOR CONSTRUCTION	2000	MG
B	REVISED FOR CUSTOMER OPTIONS	2000	KLS
A	NEW DRAWING FOR 2000-022 (KAWP/PRODUCT/AD023)	2000	GRT
REV.	DESCRIPTION	DATE	BY

LEGEND
PROCESS PIPING
UTILITY PIPING
TUBING - ST6SS, ASTM A269
NICOT 11 TUBING MEETING SAE J844
HOSE (PRE-LUBE OIL, DRAIN)
ELECTRICAL SIGNAL
TUBING COLOR CODE:
BR (BLACK): VENTS
BL (BLUE): ESD, FIRE LOOP SIGNAL
OR (ORANGE): INSTRUMENT GAS, OVER 35 PSI
YL (YELLOW): INSTRUMENT GAS, BELOW 35 PSI
GR (GREEN): ENGINE START GAS
BR (BLACK): ENGINE OIL
GR (GREEN): OIL PRESSURE OIL
GR WH (GREEN): MANIFOLD

OPTION	DESCRIPTION
355	FUEL GAS SCRUBBER (REQUESTED)
410	WARM AIR SELECTOR
445	110 VOLT HEATERS
522	REQUESTED OPTIONS NOT CONTAINED

NOTES:
1. SITE INSTALLATION AND START UP MANUAL REQUIREMENTS PER BIG SPECS 905-1 TO 905-7 MUST BE FOLLOWED.



MATERIAL LIST			
PART	ITEM	QTY	DESCRIPTION
00741	1	1	ARIEL J61/2 COMPRESSOR FRAME
01044	2	1	ENGINE, WALKERSEA 12404
02383	3	1	COUPLING, THOMAS 500 CMR
02385	4	1	AREL DRIFT
02386	5	1	COOLER, AYC 80V
02309	6	1	COOLER BUC SCREEN
01734	10	2	OIL LEVEL CONTROLLER, REN RAB-0
01696	11	2	OIL SAMPLE VALVE, JUBRO 1/4"
02481	12	2	BALL VALVE, 1" NPT WACO C/W LATCH
01222	13	1	ENGINE STUB SHAFT
02480	15	1	DRIVE SHAFT, BROWNING 25V 630SK
02480	16	1	DRIVE SHAFT, BROWNING SR 2 7/16"
02587	17	1	COOLANT SURGE TANK
02482	18	3	BALL VALVE, 1/2" NPT WACO C/W LATCH
02196	19	3	GAUGE VALVE SET, 1/2" NPT
01287	20	1	TANK, OIL B530 PER C12870
01243	21	1	COOLER SHAFT, BROWNING 25V200CE
01344	22	1	COOLER SHAFT, BROWNING "E" 2 7/16"
02481	23	1	IDLER SHAFT, BROWNING 25V630SK
02481	24	1	IDLER SHAFT, BROWNING SR 2 3/16"
01419	25	2	DRIVE BELTS, GREINACH SVX 1400
02479	26	2	BALL VALVE, 3/4" GRINELL 3011-48
02137	27	4	COUPLING, 3" DRESSER STYLE 38
02138	28	3	COUPLING, 2" DRESSER STYLE 38
02730	32	1	COOLER DRIVE BELT GUARD
02330	33	1	FLYWHEEL/COUPLING GUARD 500 CMR
02314	34	1	LEVEL SWITCH GAUGE, MURPHY EL-100-K1
02824	35	1	OIL COOLER, EK-712
02246	36	1	240C GENERATOR, C/W BATTERIES
02318	38	3	PUMP, WILSON M2
02481	39	1	BALL VALVE, 1" NPT WACO C/W LATCH
02380	54	1	SEPARATE LUBE OIL TANK
02480	55	1	BALL VALVE, 3/4" NIBCO
01131	56	1	FILTER, BALDWIN 1" NPT

INITIAL FILE OF LIQUIDS			
INCLUDES ENGINE AND COMPRESSOR			
PART	QTY	DESCRIPTION	
00064	1.2	COOLANT, LOCKE THERM 55 (20SL DRUM)	
01708	1.35	LUBE OIL, ESSO LUBE GLX-40 (20SL DRUM)	

LEGEND

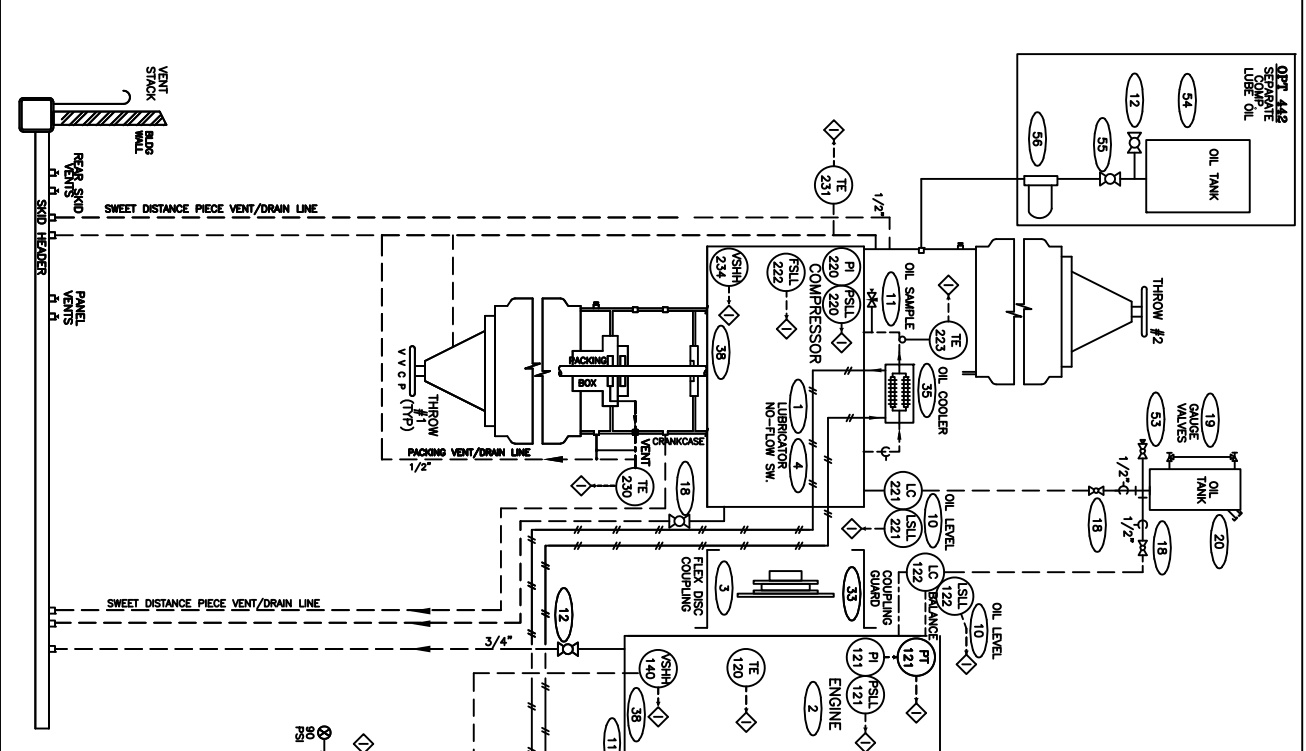
PROCESS PIPING
UTILITY PIPING
NATON 11 TUBING MEETING SAE J844
TYPE A OR B
HOSE (PRE-LUBE OIL, DRAIN)
ELECTRICAL SIGNAL

TUBING COLOR CODE:

BL (BLACK): VENTS
RD (RED): ESD, FIRE LOOP SIGNAL
OR (ORANGE): CONTROL VALVE, TAG #
TE (YELLOW): INSTRUMENT GAS, OVER 35 PSI
YL (YELLOW): ENGINE START GAS
BL (BLACK): ENGINE FUEL GAS
BR (BROWN): ENGINE OIL
GR (GREEN): COMPRESSOR OIL
GR (GREEN): MANUFACTURED STAINLESS STEEL TUBING

SCHEMATIC NOTES

1. PACKING GAS PREVENTS MIGRATION OF LUBE OIL FROM COMPRESSOR TO ENGINE
2. PACKING GAS PREVENTS MIGRATION OF LUBE OIL FROM ENGINE TO COMPRESSOR
3. ON LOSS OF PUMP DIFFERENTIAL, ESD SYSTEM OPERATES WHETHER UNIT IS RUNNING OR NOT
4. MEASURE ANY LEAKAGE INTO SWEET SYSTEM
5. PUMP SYSTEM TO MAINTAIN DIFF. PRESS. DURING BREEF INTERMITTENT PERIODS OF STOPPING
6. SITE REQUIREMENTS PER B530S 1 TO 905-7 MUST BE FOLLOWED.



OPTIONS INC. ON DRG.

442 SEPARATE LUBE OIL

OPTIONS REQUESTED NOT CONFORMED