




INSTRUMENT LIST		
TAG No.	DESCRIPTION	
EF-250/251	XP BUILDING FAN FOR 6 ACPH, 115/208-230VAC, 1PH, 60Hz, 1/4 HP	
V-250	VERTICAL SEPARATOR, 30"OD X 10'-0"S/S X 1335 PSI	
UH-250/251	RUFFNECK FX516-480360W-150T C/W PIPE MOUNTING KIT	
P-210 TO P-255	CHEMICAL PUMP, WILLIAMS MODEL CP250V225	
	CHEMICAL OUTPUT 2.16 L/HR AND 100:1 TURNDOWN RATIO (51.8 TO 0.5184 LPD)	
P-260	CHEMICAL PUMP, WILLIAMS MODEL CRP500V400	
FE 2400 CUSTOMER SUPPLIED	SR. METER RUN, 4" 600 ANSI SCH. 80, AGA 2000, FOE, FLOW CONDITIONER, 71.5" OAL, C/W 2.25" ORIFICE, LEFT HAND CRANK (CUSTOMER SUPPLIED)	
FIT 2410	SIMARK TURBINE METER, 2" X 2" 600 ANSI EZIN C/W MAG PICKUP MNTG KIT & SMRT-101 TOTALIZER 4-20 mA OUTPUTS, EXP. PROOF, -20°C-70°C OP. RANGE, SR. METER RUN, 4" 600 ANSI SCH. 80, AGA 2000, FOE, FLOW CONDITIONER, 71.5" OAL, C/W 2.25" ORIFICE, (CUSTOMER SUPPLIED)	
FE 2517-2617 CUSTOMER SUPPLIED	[2537,2557,2577,2595 RH CRANK & 2517,2527,2547,2567,2587,2617 LH CRANK]	
FG 5503	ACCURATE FLOW GAUGE MODEL PSG0180-S-T-LPD	
FG 5603	ACCURATE FLOW GAUGE MODEL PSG0404-S-T-LPH	
FIT 2517-2617/2400	CUSTOMER SUPPLIED SCADAPACK MODEL 4203-DR22101UA2-L	
LG 2400	MAGNETROL ORION ATLAS MAGNETIC LEVEL, MODEL: XMI-CB38-BEBP-2121-3NB499-153 X- 1524mm C-C/VIL, MEASUREMENT RANGE 1.524 m / CL FLANGES 1.524 m 2-1/2" NPS SCH. 40 316/316L SS, NACE MR0175 CERTIFICATION, CRN AB AND BC, SI UNITS	
LIT 2400	ENHANCED JUPITER MAGNOSTRICTIVE TX. MODEL: 241-3H00-100-2M-168, 4-20 mA, XP	
LV/LYV 2410	FISHER V500 3" 600 ANSI 2 3/4" NACE, TRIM 4S, C/W 2052 ROTARY SPRING ACT. FC C/W ASCO SOLENOID VALVE MODEL EVX8316G38/2104-24VDC RIGHT HAND, STYLE "B" POSITION I IMIRROR PACKAGE LEFT MOUNT, STYLE "C" POSITION II	
PCV 2100-2800	FISHER 67CFR, 0-35 PSI C/W GAUGE - SEE PI 2100...	
PDG 2410	ORANGE RES. 4.5" 0-100 PSID, MAX 3000 PSI, MODEL 1201PG-I-C-4.5B 100KPA -1-2	
PI 2100-2800	WIKA, 2-1/2", 60 PSI, SS/SS, BTM, 1/4", LF	
PIT 2400/2401	ROSEMOUNT PRESSURE TRANS. -147-4000 PSI, 4-20 mA, HART, 3051S2TG4A2EIIAIAK6M5PIQ408 C/W SS MANIFOLD	
PRV 2105-2805	NUPRO SS-4R3A5EP, 1/4" NPT, SET AT 4931 PSI	
PSV 2400	FARRIS 27CA33-320, 1" 600 X 1" 150, SET AT 9200 kPa	
PV/PY 2400	FISHER CV, 657-45 ET, ATC/FO, 3" 600 ANSI RF, 3 7/16" TRIM, NACE C/W FISHER DVC6200AC 4-20 mA LOOP, 0-35 PSI OUTPUT RANGE	
SDY 2100/2600	ASCO SOLENOID 1/4" NPT SST 3-WAY MODEL: EVX8316G384	
TE/TW 2517-2617	WIKA 3/4" TEMP ELEMENT TRIO-55649611 C/W (CUSTOMER SUPPLIED)	
TE/TW 2400	2" 1500 ANSI FLANGED THERMOWELL, INSERTION LENGTH 8 1/2"	
TIT 2505 A/B	ROSEMOUNT TEMP. TRANS. MODEL: 3144PDIAIK6B4M5T1XA 4-20mA, HART,	
TG/TW 2401	WIKA 3/4" TEMP INDICATOR TI 52 C/W 2" 1500 ANSI FLANGED THERMOWELL (55649645), 12" INSERTION, SST, NACE, CRN	
VALVE LIST		
ITEM	QTY.	DESCRIPTION
BV-1	20	GROVE TYPE B4.C BV, 4" 600 ANSI RF RP DB8B, NACE
BV-2	4	NUTRON BV, 4" 600 ANSI RF RP, NACE
BV-3A	1	NUTRON BV, 3" 600 ANSI RF RP, NACE
BV-3B	1	GROVE TYPE B4.C DB8B BV, 3" 600 ANSI RF RP, NACE
BV-4	2	NUTRON BV, 2" 600 ANSI RF RP, NACE
BV-5	1	NUTRON BV, 1" NPT 6000 PSI RP, STAINLESS STEEL
BV-6	30	NUTRON BV, 1" NPT 6000 PSI RP, NACE
BV-7	3	NUTRON BV, 3/4" NPT 6000 PSI FP, STAINLESS STEEL
BV-8	12	NUTRON BV, 3/4" NPT 6000 PSI RP, NACE
BV-9	20	KF BV, 1/2" NPT, 3000 PSI, K3-F05TH 30LZ, SS-SS RPTFE LF2 OII
BV-10	46	NUTRON BV, 1/2" NPT 6000 PSI FP, NACE
BV-11	1	GROVE BV, 10" 600 ANSI RF RP DB8B, LOW TEMP, NACE-SHIP LOOSE
BV-12	1	NUTRON BV, 3/8" NPT 6000 PSI FP, NACE
BV-13	2	GROVE TYPE B4.C BV, 2" 600 ANSI RF FP DB8B, NACE
CV-1	1	WHEATLEY 910 CHECK VALVE, 4" 600 ANSI, NACE
CV-2	1	WHEATLEY 910 CHECK VALVE, 3" 600 ANSI, NACE
CV-3	1	WHEATLEY 820 CHK VLV, 1/2"NPT, 2250 PSI, NACE
CV-4	10	WGI BALL CHECK, 1/2", SS, KALREZ
CV-4M	1	WGI BALL CHECK, 1/2", SS
GV-1	1	GLOBE VALVE, NEWCO, 2" 600 ANSI, NACE
GV-2	1	GLOBE VALVE, NEWCO, 1" CLASS 800 ANSI, NACE
NV-1	2	WGI NV, 3/4"X1/2" MXF, SS
NV-2	5	ANDERSON GREENWOOD NV, 1/2" MXF, SS, MODEL H71 VIS 44Q - 10,000 PSI
NV-3	13	WGI NV, 1/4" MXF, SS
NV-4	10	NV, 1/2" MXF, SS, KALREZ
ST-1	1	ALTA Y-STRAINER, 4" 600 ANSI, NACE
SB-1	20	SPECTACLE BLIND, 4" 600 ANSI, 316SS
BR-1	1	BLEED RING, 4" 600 ANSI, 316SS C/W 3/4" TAP

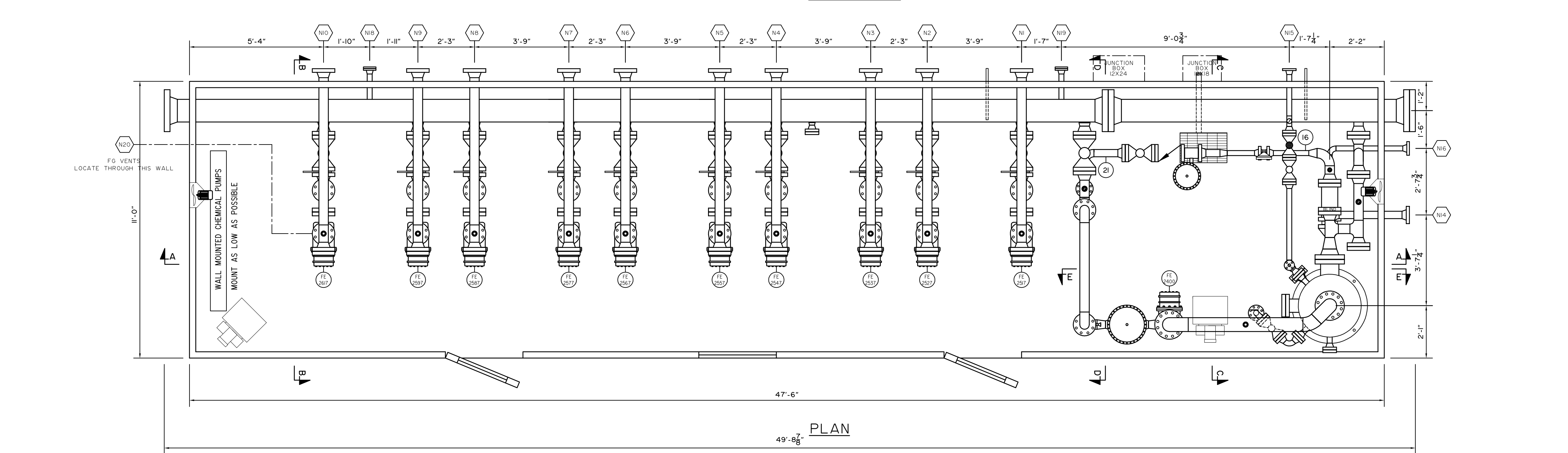


925-23rd Street S.W. Medicine Hat
Alberta, Canada, T1A 8R1 (403) 526-3142

PROJECT DILLY CREEK WELLSITE
SEPARATOR PACKAGE (Z-250)
LSD: d-37-J/94-0-8




TITLE P8ID

Wo No.: 35024	REV. No.: A	DATE: MM/DD/YY 10/20/14
DRAWN BY: BJ SYLYSKI	SCALE: N.T.S.	CAD No.: QT-12207-P8ID
DATE: MM/DD/YY 10/20/14		



NOTES:
ALL STD LENGTHS GIVEN ARE THREAD TO THREAD
SHIPPING DIMENSIONS 12"-5" WIDE X 50'-0" LONG X 15'-0" HIGH
PACKAGE WEIGHT APPROX 80,000 LBS
10" BALL VALVE AND TOP SPOOL, PEECE TO BE REMOVED FOR SHIPPING
ALL THREADED PIPING TO BE SCH. XXH
ALL THREADED FITTINGS TO BE 6000 PSI
ALL PIPING TO CONFORM TO NEXEN SPEC. 104-02B CLASS 'CB' & 'CBC'
ALL MATERIAL SUBJECT TO SOUR SERVICE SHALL BE IN COMPLIANCE WITH NEXEN SPEC. 120-01
P. ENG. STAMPED FOR ABSULT ONLY, NOT FOR FITNESS FOR PURPOSE

NOZZLE CHART				
NOZZLE	SIZE	RATING	SERVICE	NOTES
N1	4"	600 ANSI	INLET	
N2	4"	600 ANSI	INLET	
N3	4"	600 ANSI	INLET	
N4	4"	600 ANSI	INLET	
N5	4"	600 ANSI	INLET	
N6	4"	600 ANSI	INLET	
N7	4"	600 ANSI	INLET	
N8	4"	600 ANSI	INLET	
N9	4"	600 ANSI	INLET	
N10	4"	600 ANSI	INLET	
N11 A	4"	600 ANSI	TEST OUT	C/W ONE (I) RFB
N11 B	4"	600 ANSI	TEST OUT	.
N12 A	10"	600 ANSI	GROUP OUT	.
N12 B	10"	600 ANSI	GROUP OUT	C/W ONE (I) RFB
N13 A/B	10"	600 ANSI	SPARE	
N14	3"	600 ANSI	FLUSH OUT	
N15	2"	150 ANSI	PSV OUT	
N16	2"	600 ANIS	TRUCK OUT	
N17 A	2"	150 ANSI	INST. AIR	C/W ONE (I) RFB
N17 B	2"	150 ANSI	INST. AIR	.
N18	2"	150 ANSI	INST. AIR	C/W ONE (I) RFB
N19	2"	150 ANSI	INST. AIR	C/W ONE (I) RFB
N20	1"	150 ANSI	HPV	

<div> <div>CLIENT</div> <div>   </div> </div>		<div> <div>  </div> <div> 925-23rd Street S.W. Medicine Hat Alberta, Canada, T1A 8R1 (403) 526-3142 </div> </div>	
<div> <div>PROJECT</div> <div> DILLY CREEK WELL SITE SEPARATOR PACKAGE (Z-250) LSD: d-37-J/94-O-8 </div> </div>			
<div> <div>TITLE</div> <div>PIPING LAYOUT</div> </div>			
<div> <div>Wo. No.: 35024</div> </div>		<div> <div>REV. No.: A</div> <div>DATE: MM/DD/YY 10/20/14</div> </div>	
<div> <div>DRAWN BY: BJ SYLYSKI</div> <div>DATE: MM/DD/YY 10/20/14</div> </div>		<div> <div>SCALE: 3/8"=1'-0"</div> <div>CAD No.: 35024-LAYOUT</div> </div>	