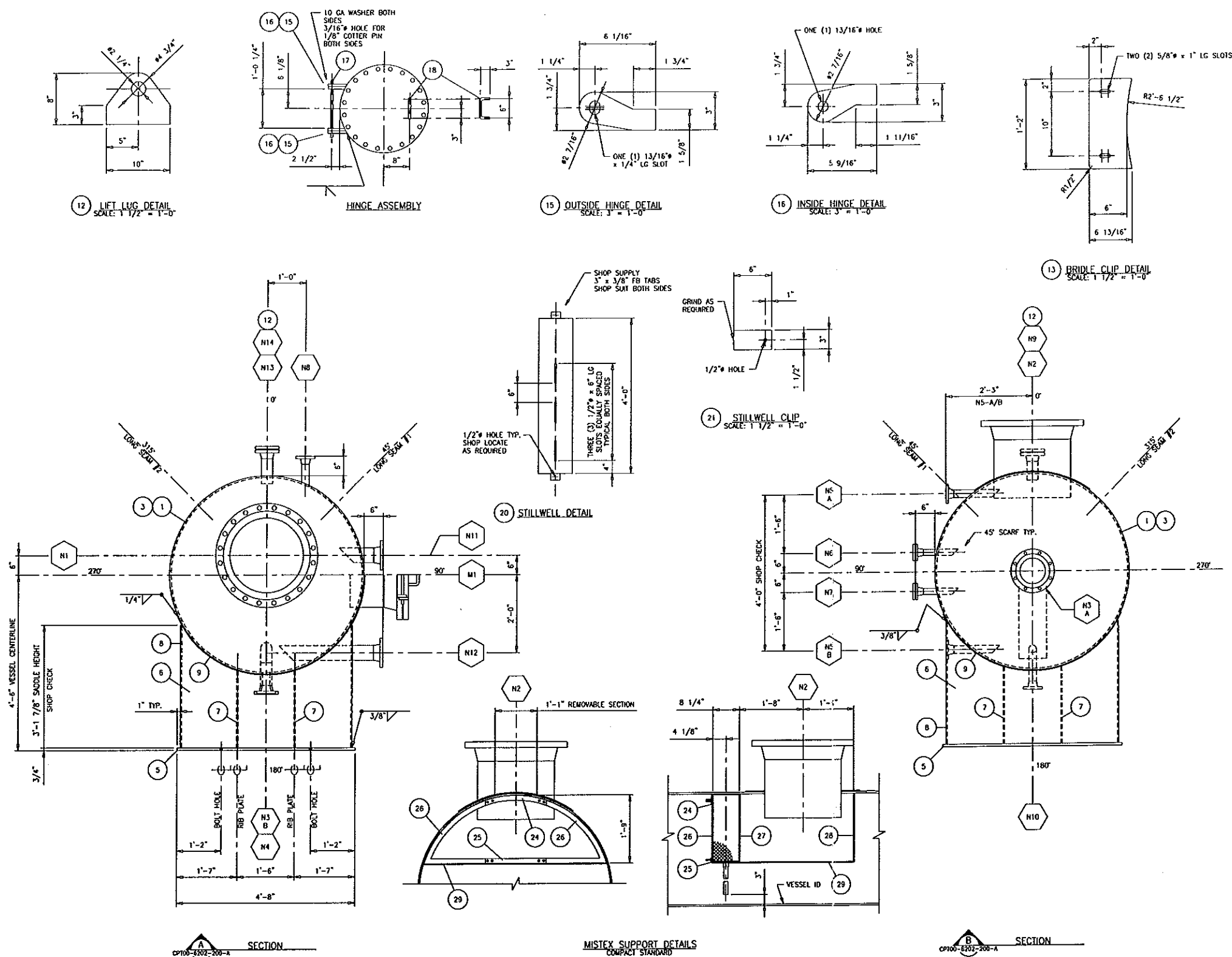


THIS DRAWING IS THE PROPERTY OF COMPLETE PACKAGE TECHNOLOGY (2000) LTD. ANY REPRODUCTION IN WHOLE OR PART WITHOUT EXPRESS PERMISSION IS PROHIBITED



# BILL OF MATERIAL

HEAT No.	ITEM	QTY.	PART	DESCRIPTION	MATERIAL
51				N4 - DRAIN	
52	1		FLANGE	2" 150# SCH XXH RFWN FLANGE	SA105 Gr. N
53	1		PIPE	2" SCH XXH SMLS PIPE x 4" LG	SA106 Gr. B
54				N5 A - BRIDLE CONNECTION	
55	1		FLANGE	2" 150# SCH XXH RFWN FLANGE	SA105 Gr. N
56	1		PIPE	2" SCH XXH SMLS PIPE x 1'-2 3/16" LG (SCARF)	SA106 Gr. B
57				N5 B - BRIDLE CONNECTION	
58	1		FLANGE	2" 150# SCH XXH RFWN FLANGE	SA105 Gr. N
59	1		PIPE	2" SCH XXH SMLS PIPE x 1'-2 3/16" LG (SCARF)	SA106 Gr. B
60				N6 - TI c/w 3/4" FNPT HUB BLIND	
61	1		FLANGE	1 1/2" 150# SCH XXH RFWN FLANGE	SA105 Gr. N
62	1		FLANGE	1 1/2" 150# RF x 3/4" FNPT HUB BLIND	SA105 Gr. N
63	1		PIPE	1 1/2" SCH XXH SMLS PIPE x 10 7/8" LG (SCARF)	SA106 Gr. B
64	1		GASKET	1 1/2" 150# RF x 1/8" FLEXITALLIC GASKET	304 S.S.
65	4		BOLTING	1/2" x 2 3/4" LG STUD c/w (2) NUTS	SA193 Gr. B7 SA194 Gr. 2H
66				N7 - PI c/w 3/4" FNPT HUB BLIND	
67	1		FLANGE	1 1/2" 150# SCH XXH RFWN FLANGE	SA105 Gr. N
68	1		FLANGE	1 1/2" 150# RF x 1/2" FNPT HUB BLIND	SA105 Gr. N
69	1		PIPE	1 1/2" SCH XXH SMLS PIPE x 10 7/8" LG (SCARF)	SA106 Gr. B
70	1		GASKET	1 1/2" 150# RF x 1/8" FLEXITALLIC GASKET	304 S.S.
71	4		BOLTING	1/2" x 2 3/4" LG STUD c/w (2) NUTS	SA193 Gr. B7 SA194 Gr. 2H
72				N8 - PSV	
73	1		FLANGE	2" 150# SCH XXH RFWN FLANGE	SA105 Gr. N
74	1		PIPE	2" SCH XXH SMLS PIPE x 7 1/16" LG	SA106 Gr. B
75				N9 - LT c/w 2" FNPT HUB BLIND & STILLWELL	
76	1		FLANGE	3" 150# SCH 160 RFWN FLANGE	SA105 Gr. N
77	1		FLANGE	3" 150# RF x 2" FNPT HUB BLIND	SA105 Gr. N
78	1		PIPE	3" SCH 160 SMLS PIPE x 5 3/4" LG	SA106 Gr. B
79	1		GASKET	3" 150# RF x 1/8" FLEXITALLIC GASKET	304 S.S.
80	4		BOLTING	5/8" x 3 1/2" LG STUD c/w (2) NUTS	SA193 Gr. B7 SA194 Gr. 2H
81				N10 - RECYCLE c/w SYPHON	
82	1		FLANGE	2" 150# SCH 160 RFWN FLANGE	SA105 Gr. N
83	1		PIPE	2" SCH 160 SMLS PIPE x 7" LG	SA106 Gr. B
84	1		ELBOW	2" SCH 40 LRBW 180° RETURN BEND	SA234 Gr. WPB
85				N11 - LSHH	
86	1		FLANGE	4" 150# SCH 160 RFWN FLANGE	SA105 Gr. N
87	1		PIPE	4" 150# SCH 160 SMLS PIPE x 10 11/16" LG (SCARF)	SA106 Gr. B
88				N12 - LSLI	
89	1		FLANGE	4" 150# SCH 160 RFWN FLANGE	SA105 Gr. N
90	1		PIPE	4" 150# SCH 160 SMLS PIPE x 2'-5 1/2" LG (SCARF)	SA106 Gr. B
91				N13 - SPARE c/w BLIND	
92	1		FLANGE	3" 150# SCH 160 RFWN FLANGE	SA105 Gr. N
93	1		FLANGE	3" 150# RF BLIND FLANGE	SA105 Gr. N
94	1		PIPE	3" SCH 160 SMLS PIPE x 7 3/4" LG	SA106 Gr. B
95	1		GASKET	3" 150# RF x 1/8" FLEXITALLIC GASKET	304 S.S.
96	4		BOLTING	5/8" x 3 1/2" LG STUD c/w (2) NUTS	SA193 Gr. B7 SA194 Gr. 2H
97				N14 - SPARE c/w BLIND	
98	1		FLANGE	3" 150# SCH 160 RFWN FLANGE	SA105 Gr. N
99	1		FLANGE	3" 150# RF BLIND FLANGE	SA105 Gr. N
100	1		PIPE	3" SCH 160 SMLS PIPE x 7 3/4" LG	SA106 Gr. B
101	1		GASKET	3" 150# RF x 1/8" FLEXITALLIC GASKET	304 S.S.
102	4		BOLTING	5/8" x 3 1/2" LG STUD c/w (2) NUTS	SA193 Gr. B7 SA194 Gr. 2H
103				M1 - MANWAY c/w BLIND & HINGE ASSEMBLY	
104	1		REPAD	36" OD x 3/8" PL	SA516 Gr. 70N
105	1		FLANGE	20" 150# SCH 40 RFWN FLANGE	SA105 Gr. N
106	1		FLANGE	20" 150# SCH 40 RFWN BLIND FLANGE	SA105 Gr. N
107	1		PIPE	20" SCH 40 SMLS PIPE x 10 1/2" LG	SA106 Gr. B
108	1		GASKET	20" 150# RF x 1/8" FLEXITALLIC GASKET	304 S.S.
109	20		BOLTING	1 1/8" x 6 1/4" LG STUD c/w (2) NUTS	SA193 Gr. B7 SA194 Gr. 2H
110					
111					
112					
113					
114					
115					
116					
117					
118					
119					
120					
121					
122					
123					
124					
125					

GENERAL NOTES				DESIGN DATA:		
1.) SEE REFERENCE DRAWING EPT00-6202-200-A	No.	DATE	REVISION	DWN.	CHK.	APP.
	0	00/11/13	ISSUED FOR CONSTRUCTION	JG	BCA	PE
	1	00/11/14	GENERAL REVISIONS, ISSUED FOR CONSTRUCTION	JG	BCA	PE
	2	00/11/17	GENERAL REVISIONS, REVISED QUANTITY REQUIRED, ISSUED FOR CONSTRUCTION	JG	BCA	PE
	3	00/11/24	REVISED STILLWELL DETAIL, QUANTITY REQUIRED, ISSUED FOR CONSTRUCTION	JG	BCA	PE
	4	01/04/27	AS BUILT	FC	BCA	PE

**Compact**  
COMPLETE PACKAGE TECHNOLOGY (2000) LTD.  
EDMONTON, ALBERTA, CANADA

CLIENT: PARAMOUNT RESOURCES LTD.			
PROJECT: INLET SEPARATOR/SLUG CATCHER 60" ID x 16'-0" SEAM/SEAM x 280 PSIG @ 100°F			
SCALE: 3/4" = 1'-0"	JOB No.: 00-6202-1/2/3/4/8	DWG. No.: CPT00-6202-200-B	REV. 4
SHEET #2 OF 2			
MATERIAL SHOWN FOR ONE (1) UNIT ONLY - FIVE (5) UNITS REQUIRED			

I LONG SEAM	II CIRC. SEAM	III NOZZLE FLUSH	IV NOZZLE & INT. PROJ.	V REPAID & INT. PROJ.	VI REPAID & FLUSH	VII FLG/FTG to FTG
WPS CPT-04/05/10/34	WPS CPT-04/05/10/34	WPS CPT-10/34	WPS CPT-10/34	WPS CPT-10/34	WPS CPT-10/34	WPS CPT-04/10/34

# NOZZLE SCHEDULE

TAG	SIZE	RATING	TYPE		SERVICE	NOZZLE W.T.	REPAID	PROJECTION		WELD DETAIL	WELD SIZE				ITEM NUMBER
			EXTERNAL	INTERNAL				1/5	0/5		A	B	C	D	
N1	24"	150#	RFWN	N/A	INLET	1.500"	N/A	4"	SHOWN	1/4"X	3/4"	1/2"	--	--	35-36
N2	24"	150#	RFWN	N/A	GAS OUTLET	1.250"	36" OD x 3/8"	2"	16"	1/4"X	3/8"	0"	3/8"	--	38-40
N3 A	8"	150#	RFWN	N/A	LIQUID OUTLET c/w SYPHON	SCH 160	N/A	SHOWN	SHOWN	N/VII	3/8"	--	--	--	42-45
N3 B	3"	150#	RFWN	N/A	LIQUID OUTLET c/w SYPHON	SCH 160	N/A	SHOWN	6 1/4"	N/VII	5/8"	--	--	--	47-49
N4	2"	150#	RFWN	N/A	DRAIN	SCH XXH	N/A	GF	6"	N/VII	3/8"	--	--	--	52-53
N5 A	2"	150#	RFWN	N/A	BRIDLE CONNECTION	SCH XXH	N/A	6"	SHOWN	N/VII	3/8"	--	--	--	55-56
N5 B	2"	150#	RFWN	N/A	BRIDLE CONNECTION	SCH XXH	N/A	6"	SHOWN	N/VII	3/8"	--	--	--	58-59
N6	1 1/2"	150#	RFWN	N/A	TI c/w 3/4" FNPT HUB BLIND	SCH XXH	N/A	6"	SHOWN	N/VII	3/8"	--	--	--	61-65
N7	1 1/2"	150#	RFWN	N/A	PI c/w 1/2" FNPT HUB BLIND	SCH XXH	N/A	6"	SHOWN	N/VII	3/8"	--	--	--	67-71
N8	2"	150#	RFWN	N/A	PSV	SCH XXH	N/A	GF	SHOWN	N/VII	3/8"	--	--	--	73-74
N9	3"	150#	RFWN	N/A	LT c/w 2" FNPT HUB BLIND & STILLWELL	SCH 160	N/A	2"	6"	N/VII	5/8"	--	--	--	76-80
N10	2"	150#	RFWN	N/A	RECYCLE c/w SYPHON	SCH XXH	N/A	SHOWN	6"	N/VII	3/8"	--	--	--	82-84
N11	4"	150#	RFWN	N/A	LSHH	SCH 160	N/A	6"	SHOWN	N/VII	5/8"	--	--	--	86-87
N12	4"	150#	RFWN	N/A	LSLL	SCH 160	N/A	6"	SHOWN	N/VII	5/8"	--	--	--	89-90
N13	3"	150#	RFWN	N/A	SPARE c/w BLIND	SCH 160	N/A	2"	8"	N/VII	5/8"	--	--	--	92-96
N14	3"	150#	RFWN	N/A	SPARE c/w BLIND	SCH 160	N/A	2"	8"	N/VII	5/8"	--	--	--	98-102
M1	20"	150#	RFWN	N/A	MANWAY c/w BLIND & HINGE ASSEMBLY	SCH 40	36" OD x 3/8"	2"	12"	V.VW	1/2"	3/8"	3/8"	--	104-109

# BILL OF MATERIAL

HEAT No.	ITEM	QTY.	PART	DESCRIPTION	MATERIAL
	1	2	HEAD	60" ID x 5/8" NOM THK (0.5625" MIN) 2:1 SE HEAD	SA516 Gr. 70H
				c/w 2" SF (HOT FORMED)	
	3	2	SHELL	60" ID x 1/2" PL x 8'-0" LG	SA516 Gr. 70H
	4				
	5	2	BASE PLATE	10" x 3/4" PL x 4'-8" LG	SA-516-70
	6	2	SADDLE WEB	3'-1 7/8" x 3/8" PL x 4'-6" LG	SA-516-70H
	7	4	RIB PLATE	5 5/8" x 3/8" PL x 1'-11 13/16" LG	SA-516-70H
	8	4	SIDE PLATE	5 5/8" x 3/8" PL x 3'-1 7/8" LG	SA-516-70H
	9	2	WEAR PAD	8" x 1/4" PL x 5'-9" LG (ROLL TO SHELL OD)	SA-516-70H
	10				
	11	1	NAME PLATE	COMPACT 2000 STD NAME PL BRACKET c/w NAME PL	SA-516-70H
	12	2	LIFT LUG	8" x 3/4" PL x 10" LG (SEE DETAIL)	SA36
	13	1	BRIDLE CLIP	6 13/16" x 3/8" PL x 1'-2" LG (SEE DETAIL)	SA-516-70
	14				
	15	2	OUTSIDE HINGE	3" x 3/4" PL x 6 1/16" LG (SEE DETAIL)	SA-516-70
	16	2	INSIDE HINGE	3" x 3/4" PL x 5 9/16" LG (SEE DETAIL)	SA-516-70
	17	1	PIN	1/2" RB x 1'-6" LG	SA36
	18	1	HANDLE	3/4" RB x 1'-0" LG (BEND TO SUIT)	SA-516-70H
	19				
	20	1	STILLWELL	10" SCH 40 SMLS PIPE x 4'-0" LG (SEE DETAIL)	SA106 Gr. B
	21	4	STILLWELL CLIP	3" x 3/8" PL x 6" LG (SEE DETAIL)	SA-516-70H
	22	4	BOLTING	3/8" x 1 1/2" LG HEX CAPSCREW c/w (1) NUT	GR. 5
	23				
	24	1	FACE PLATE	3 1/8" x 1/4" PL x 1'-7" LG	SA-36
	25	1	FACE PLATE	1 1/2" x 1/4" PL x 1'-7" LG	SA-36
	26	2	HALF D RING	1'-8 3/16" x 1/4" PL x 1'-10 3/16" LG	SA-36
	27	1	D RING	1'-8 15/16" x 1/4" PL x 4'-9 1/8" LG	SA-36
	28	1	END PLATE	1'-8 15/16" x 1/4" PL x 4'-9 1/8" LG	SA-36
	29	1	BOTTOM PLATE	3'-8 3/4" x 1/4" PL x 4'-9 1/8" LG	SA-36
	30	1	COUPLING	1" 3000# HALF COUPLING	SA105
	31	1	PIPE	1" SCH XX SMLS PIPE x 2'-11" (TOE) (SHOP CHECK)	SA106 Gr. B
	32	8	BOLTING	3/8" x 1 1/2" LG STUD c/w (1) NUT	SA193 Gr. B7 SA194 Gr. 2H
	33				
	34			N1 - INLET	
	35	1	FLANGE	24" 150# SCH XX RFWN FLANGE	SA105 Gr. N
	36	1	NOZZLE NECK	24" OD x 1 1/2" PL x 20" LG (HOT ROLL, TAPER 3:1)	SA516 Gr. 70H
	37			N2 - GAS OUTLET	
	38	1	REPAID	36" OD x 3/8" PL	SA516 Gr. 70H
	39	1	FLANGE	24" 150# SCH XX RFWN FLANGE	SA105 Gr. N
	40	1	NOZZLE NECK	24" OD x 1 1/4" PL x 18" LG (HOT ROLL, TAPER 3:1)	SA516 Gr. 70H
	41			N3 A - LIQUID OUTLET c/w SYPHON	
	42	1	FLANGE	8" 150# SCH 160 RFWN FLANGE	SA105 Gr. N
	43	1	PIPE	8" SCH 160 SMLS PIPE x 2'-2" LG	SA106 Gr. B
	44	1	PIPE	8" SCH 40 SMLS PIPE x 3'-1 1/2" LG	SA106 Gr. B
	45	1	ELBOW	8" SCH 40 BW 45° ELBOW	SA234 Gr. WPB
	46			N3 B - LIQUID OUTLET c/w SYPHON	
	47	1	FLANGE	3" 150# SCH 160 RFWN FLANGE	SA105 Gr. N
	48	1	PIPE	3" SCH 160 SMLS PIPE x 7" LG	SA106 Gr. B
	49	1	ELBOW	3" SCH 40 LRW 180° RETURN BEND	SA234 Gr. WPB
	50			CONTINUED ON CPT00-6202-200-B	

# 1. CUSTOMER INFORMATION

a) FIVE (5) UNITS REQUIRED FOR NORMAL SERVICE.

# 2. MATERIAL NOTES:

- a) PRODUCTION IMPACT TEST EXEMPT PER UCS-66(b), UCS-66(b) AND UC-20(f)  
b) WTR'S REQUIRED FOR PRESSURE RETAINING PARTS AND ITEMS WELDED DIRECTLY TO PRESSURE RETAINING PARTS.

# 3. FABRICATION NOTES:

- a) ALL ATTACHMENT WELDS TO BE 1/4" FILLET UNLESS NOTED OTHERWISE.  
b) ALL TACK WELDS TO BE DONE WPS CPT-10/34  
c) ALL ATTACHMENTS WELDS TO BE DONE WPS CPT-10/34  
d) ALL NOZZLE OPENINGS TO HAVE A 1/8" INTERNAL RADIUS.  
e) NOZZLE N1 TO HAVE MINIMUM 200F PREHEAT.

# 4. NDE NOTES:

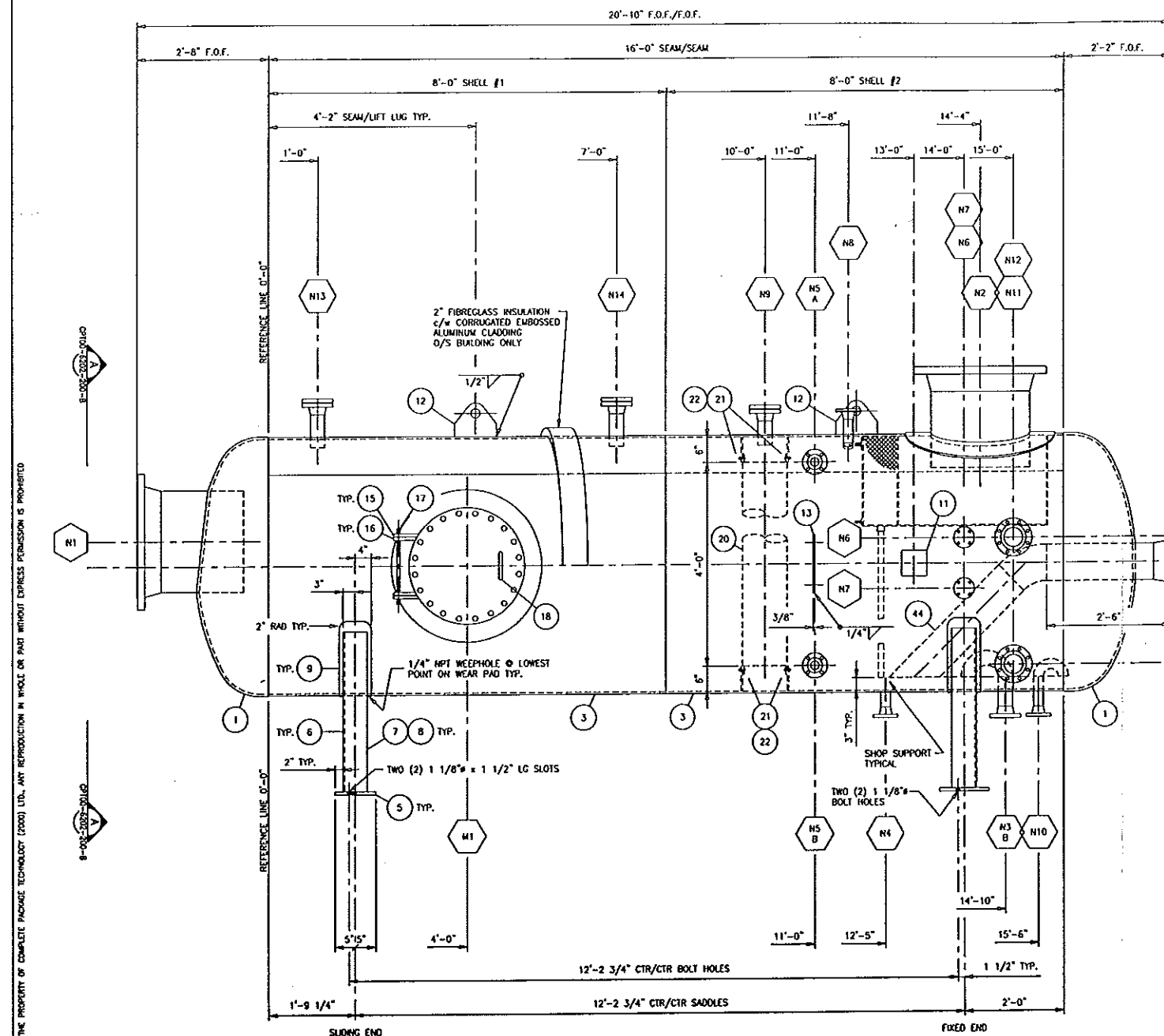
- a) RT: FULL RT-2 PER UW-11(a)(5)(b)  
b) MT: NONE  
c) UT: NONE  
d) PWHT: NONE  
e) HT: NONE  
f) HYDRO: HOLD TIME (1) ONE HOUR c/w AFFIDAVIT

# 5. VESSEL FINISH:

- a) EXTERIOR FINISH/PREPARATION AS FOLLOWS:  
BRUSH-OFF BLAST CLEANING PER SSPC-SP7  
ONE (1) SHOP COAT OF DEVOX 752 OR EQUAL, 1.5 TO 2.0 MILS DFT  
ONE (1) SHOP COAT OF MARINE ENAMEL 111 OR EQUAL, 3.5 TO 4.0 MILS DFT, WARM DRY FINISH  
2" ROD FIBERGLASS INSULATION c/w CORRUGATED EMBOSSED ALUMINUM CLADDING O/S BUILDING ONLY  
b) INTERIOR FINISH/PREPARATION AS FOLLOWS:  
NONE

# 6. SERIAL No. CHART

SERIAL No. CHART			
00-6202-1		00-6202-4	
00-6202-2		00-6202-8	
00-6202-3			



ELEVATION  
SEE REFERENCE DWG. CPT00-6202-200-B FOR ORIENTATIONS

GENERAL NOTES	No.	DATE	REVISION	DWN.	CHK.	APP.	DESIGN DATA:
1.) VESSEL TO BE DESIGNED AND CONSTRUCTED IN ACCORDANCE WITH ASME BOILER AND PRESSURE VESSEL CODE, SECTION VIII, DIV. 1, 1998 EDITION, 1999 ADDENDA.	0	00/11/13	ISSUED FOR CONSTRUCTION	JG	BCA	PE	DESIGN PRESS.: 280 PSIG CORR. ALLOW.: 1/16" RADIOGRAPHY: RT-2 NOTE 1(a) P.W.H.T.: NONE M.A.W.P.: 280 PSIG @ 100F M.D.M.T.: -20F @ 281 PSIG DESIGN
2.) BOILER REGISTRATION IN THE PROVINCE OF ALBERTA.	1	00/11/14	GENERAL REVISIONS, ISSUED FOR CONSTRUCTION	JG	BCA	PE	OPERATING PRESS.: 346 PSIG @ 320 PSIG VOLUME: 11,000 B WT. (EMPTY): 33,000 B WT. (TEST): 33,000 B SERVICE: NORMAL LSO: SEE CHART
3.) ALL BOLT HOLES TO STRADDLE NATURAL CENTERLINES UNLESS NOTED OTHERWISE.	2	00/11/17	GENERAL REVISIONS, REVISED QUANTITY REQUIRED, ISSUED FOR CONSTRUCTION	JG	BCA	PE	
4.) ALL OPENINGS TO BE COVERED PRIOR TO SHIPMENT.	3	00/11/24	REVISED STILLWELL DETAIL, QUANTITY REQUIRED, ISSUED FOR CONSTRUCTION	JG	BCA	PE	
5.) SEE REFERENCE DWG. CPT00-6202-200-B.	4	00/12/13	REVISED ITEMS 36, 40, NOTES 2(c) AND 3(e), ISSUED FOR CONSTRUCTION	BA	PE	BA	
	5	01/04/27	AS BUILT	FC			

**Compact**  
COMPLETE PACKAGE TECHNOLOGY (2000) LTD.  
EDMONTON, ALBERTA, CANADA

CLIENT: PARAMOUNT RESOURCES LTD.			
PROJECT: INLET SEPARATOR/SLUG CATCHER 60" ID x 16'-0" SEAM/SEAM x 280 PSIG @ 100F			
SCALE: 3/4" = 1'-0"	JOB No.: 00-6202-1/2/3/4/8	DWG. No.: CPT00-6202-200-A	REV. 5
MATERIAL SHOWN FOR ONE (1) UNIT ONLY - FIVE (5) UNITS REQUIRED			



