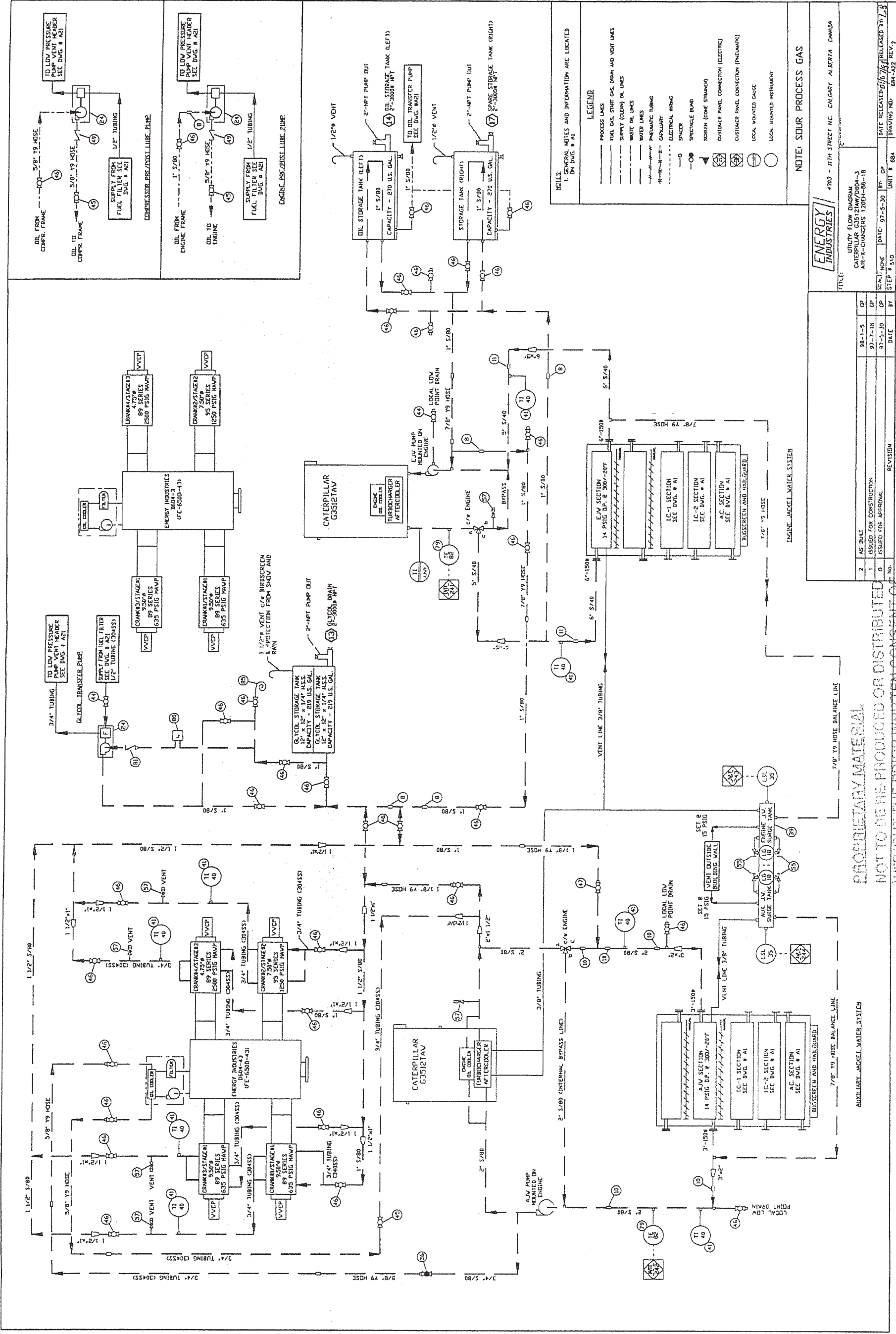


WITHOUT THE PRIOR WRITTEN CONSENT OF
ENERGY INDUSTRIES LTD.



UTILITY FLOW DIAGRAM	
CATERPILLAR G3512TAV/D604-3	
AIR-X-CHANGERS 1200H-BB-18	
DATE: 97-5-30	BY: GP
SCALE: NONE	STEP: 510
UNIT: 884	REV: 2

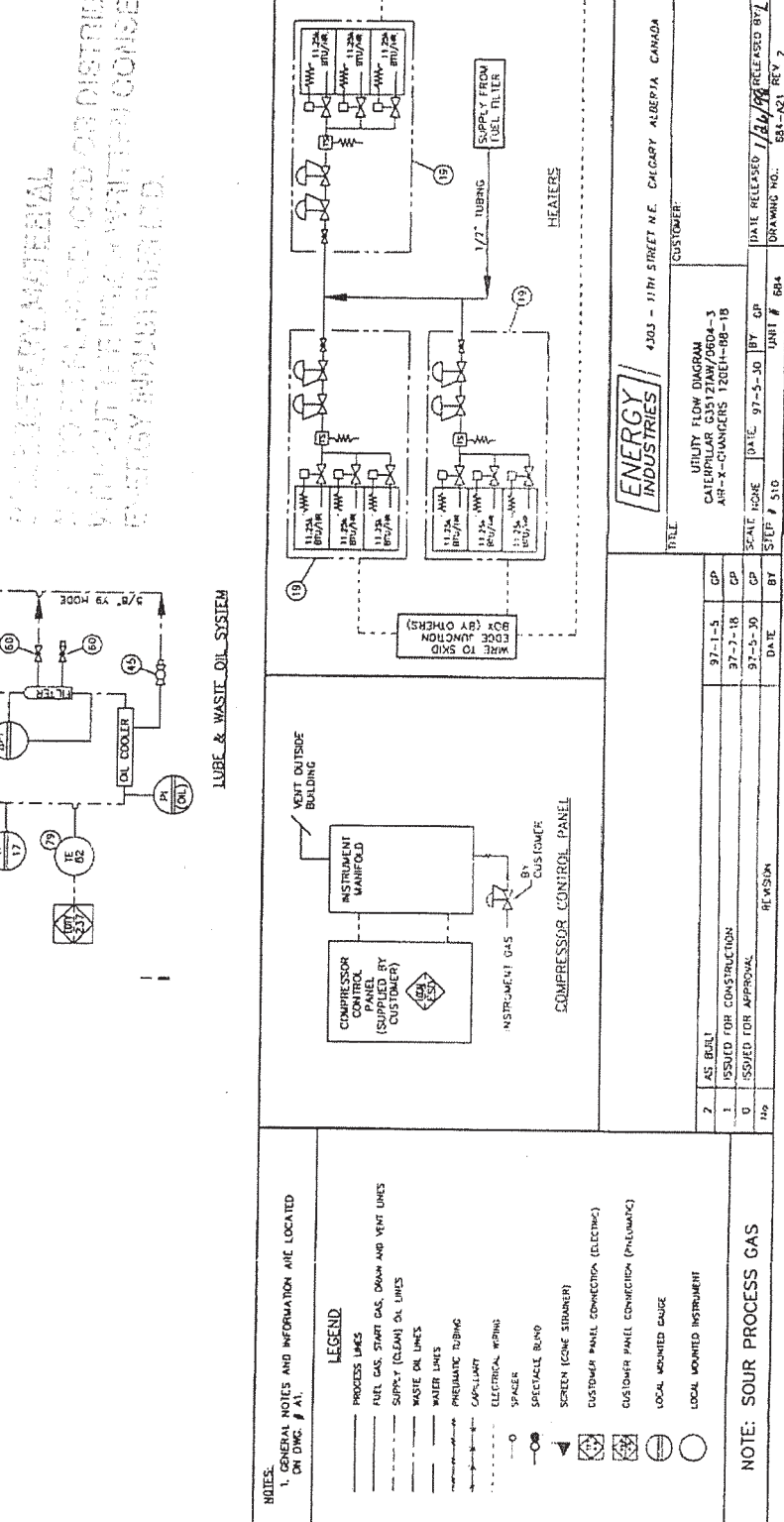
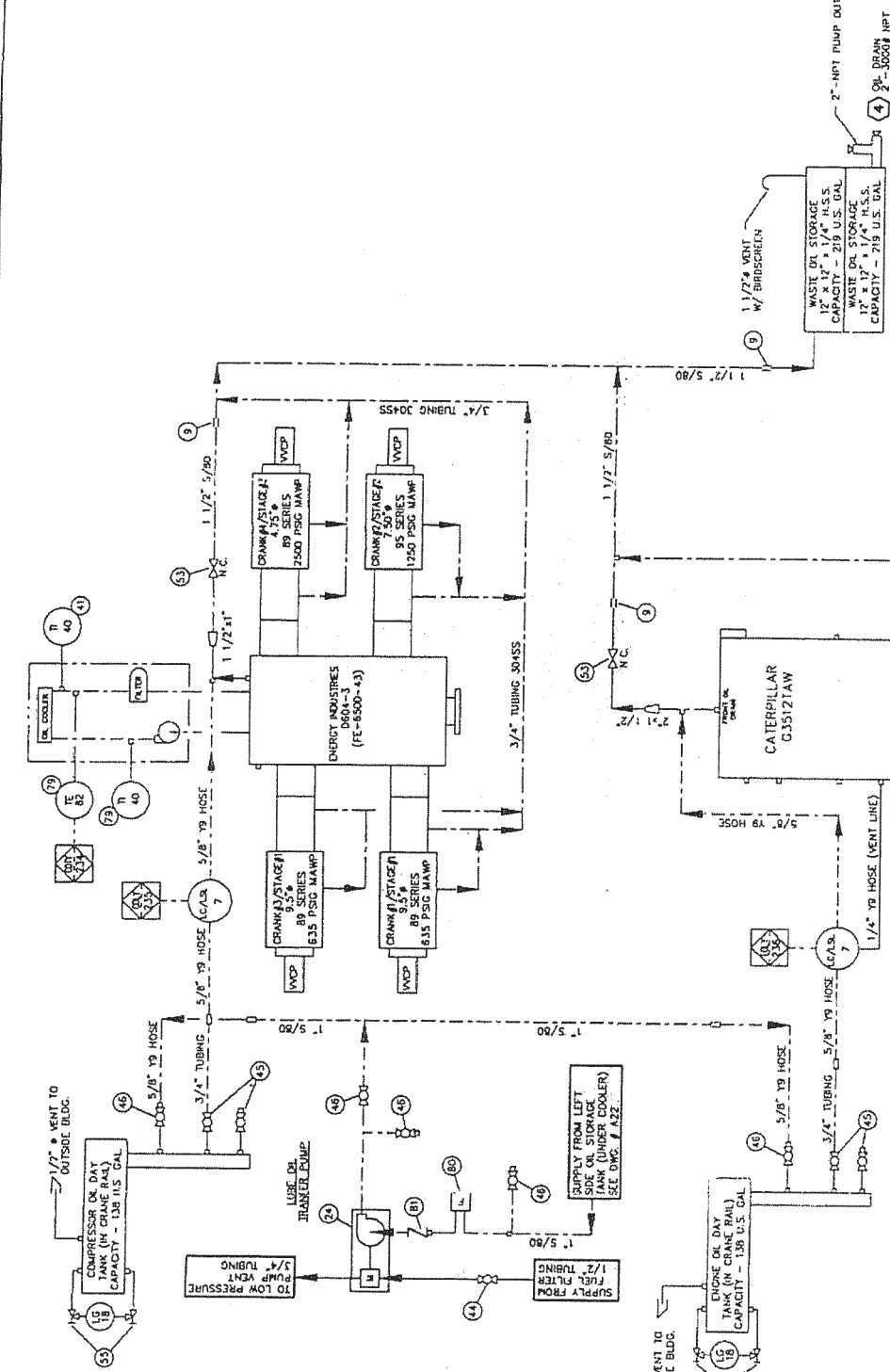
2	AS BUILT	98-1-5	GP
1	ISSUED FOR CONSTRUCTION	97-7-18	GP
0	ISSUED FOR APPROVAL	97-5-30	GP
REVISION		DATE	BY

PROPERTY MATERIAL
NOT TO BE REPRODUCED OR DISTRIBUTED
WITHOUT THE PRIOR WRITTEN CONSENT OF
ENERGY INDUSTRIES LTD.

NOTE: SOUR PROCESS GAS

LEGEND

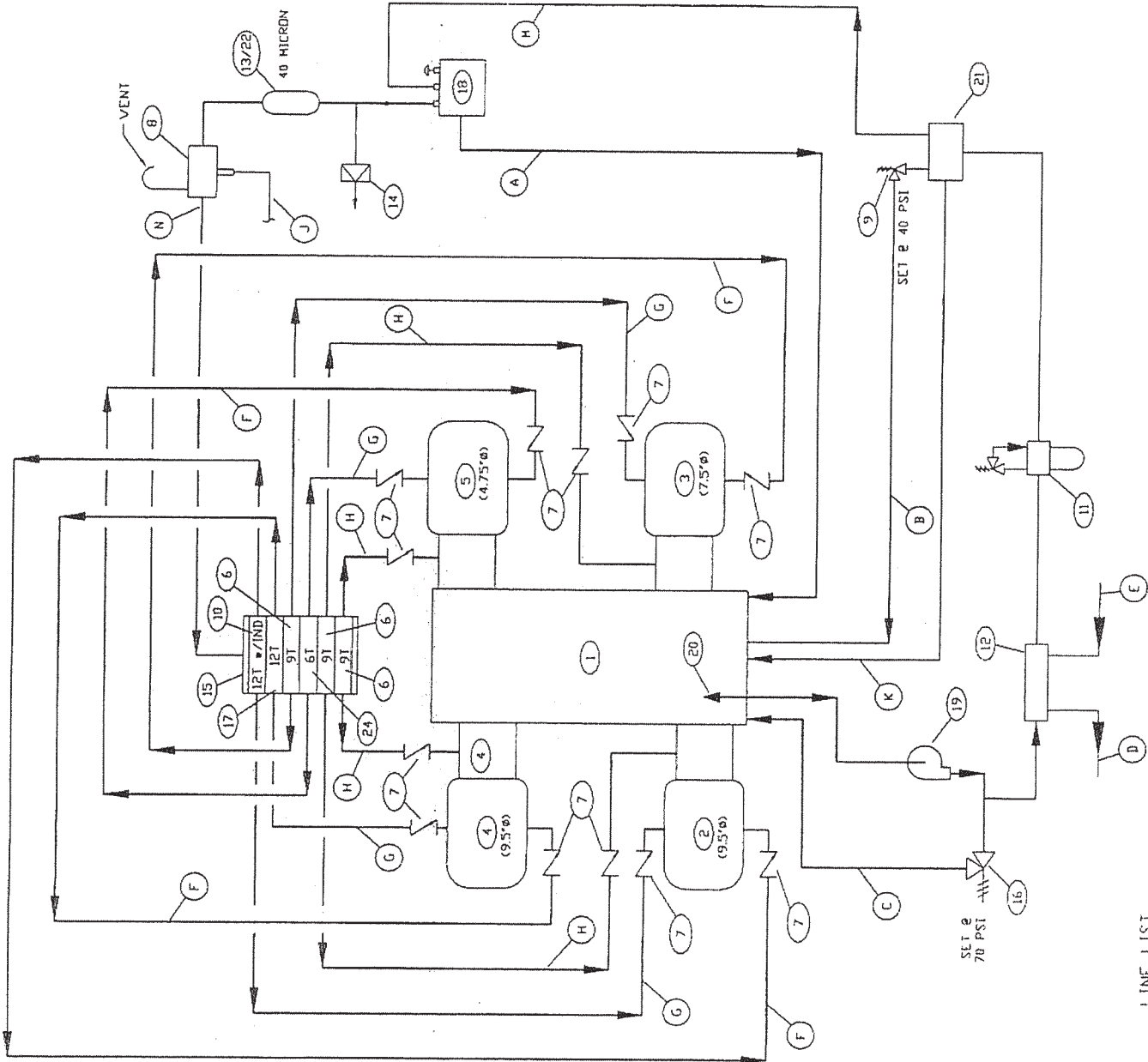
- PROCESS LINES
- FUEL GAS, START GAS, SHAM AND VENT LINES
- SUPPLY (CLEAN) OIL LINES
- WASTE OIL LINES
- WATER LINES
- PNEUMATIC TUBING
- CHILLANT
- ELECTRICAL WIRING
- SPACER
- SPECTACLE BUMP
- SCREEN (CONV. STRAINER)
- CUSTOMER PANEL CONNECTION (ELECTRIC)
- CUSTOMER PANEL CONNECTION (PNEUMATIC)
- LOCAL MOUNTED GAUGE
- LOCAL MOUNTED INSTRUMENT



BILL OF MATERIALS			
No.	PART No.	DESCRIPTION	QTY
1	-	COMPRESSOR D604-3	1
2	-	CYLINDER #1 9.5"	1
3	-	CYLINDER #2 7.5"	1
4	-	CYLINDER #3 9.5"	1
5	-	CYLINDER #4 4.75"	1
6	12A982	DIVIDER VALVE 9T	3
7	880511	CHECK VALVE (BALL)	12
8	-	LUBE SENTRY VALVE (SEE FLOW DIA. BILL OF MATERIALS)	1
9	4V-PS-1284	RELIEF VALVE SET @ 40PSI (C/W COMPRESSOR)	1
10	12A228	DIVIDER VALVE 12T C/W INDICATOR	1
11	9-PS-2203	FILTER C/W DIRT ALARM (C/W COMPRESSOR)	1
12	2-PS-7522	OIL COOLER ASSEMBLY (C/W COMPRESSOR)	1
13	11A066	INLINE SINTERED FILTER (40 MICRON)	1
14	11A068	RUPTURE DISC	1
15	12A980A	DIVIDER BLOCK HLC-6	1
16	N/A	INTERNAL OIL RELIEF VALVE (C/W COMPRESSOR)	1
17	12A983	DIVIDER VALVE 12T	1
18	52-PS-5864	LINCOLN LUBE PUMP (C/W COMPRESSOR)	1
19	3-100036	OIL PUMP ASSEMBLY (C/W COMPRESSOR)	1
20	5-PS-3904	INLET STRAINER (C/W COMPRESSOR)	1
21	3-024658	LUBE OIL MANIFOLD (C/W COMPRESSOR)	1
22	8BA824	1/4" NPT HEX-NIPPLE	1
23	---	---	-
24	13A384	DIVIDER VALVE 6T	1
25	-	-	-

NOTE:
1. DESIGN CYCLE TIME IS 24.1 SECONDS
2. DESIGN OIL FLOW RATE IS 14.175 US P.P.D.
3. ALL TUBING TO BE 304SS C/W CAD-PLATED SWAGELDK FITTINGS W/ S.S. FERRULES.

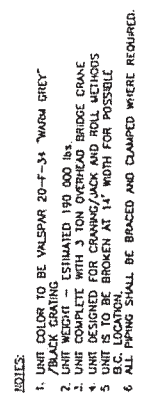
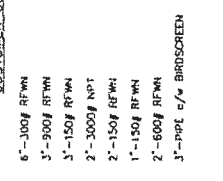
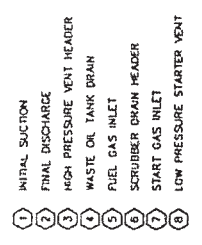
NOT TO BE REPRODUCED OR TRANSMITTED IN ANY FORM OR BY ANY MEANS, WITHOUT PERMISSION IN WRITING FROM THE COPYRIGHT HOLDER.

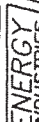


LINE LIST

- (A) OVERFLOW LINE BACK TO CRANKCASE
- (B) RELIEF DOWNSTREAM OF OIL FILTER
- (C) RELIEF DOWNSTREAM OF OIL PUMP
- (D) WATER TO JACKET WATER COOLER
- (E) WATER FROM JACKET WATER COOLER
- (F) LOWER PISTON LUBE
- (G) UPPER PISTON LUBE
- (H) ROD PACKING LUBE
- (I) SIGNAL TO PANEL (ELECTRIC)
- (J) MAIN BEARINGS, CRANK PIN BEARINGS, CROSSHEAD PIN, BEARINGS, CROSSHEAD SHAFT LUBE
- (K) OIL SUPPLY TO LUBRICATOR PUMP FROM MAIN OIL PUMP
- (L) HIGH PRESSURE OIL LINE TO DIVIDER BLOCK
- (M)
- (N)

0	ISSUED FOR CONSTRUCTION	REVISION	97-07-21	GP	BY
No.			DATE		
ENERGY INDUSTRIES					
4303 - 11TH STREET N.E. CALGARY ALBERTA CANADA					
TITLE: LUBE OIL FLOW DIAGRAM D604-3 COMPRESSOR					
SCALE: NONE	DATE: 97-21-07	BY: GP	UNIT # 684	DATE RELEASED: 1/30/98	RELEASED BY: L.B.
STEP # 511			DRAWING NO. 684-A3	REV. 0	



0	'AS BUILT'	REVISION	98/1/7	GP
No.			DATE	BY
		4303 - 11TH STREET N.E. CALGARY ALBERTA CANADA		
TITLE:		Q21 100000		
COMPRESSOR ELEVATION				
CHANGERS 120EH-88-13				
AIR-X-CHANGERS 120EH-88-18				
SCALE: 1/2"=1'	DATE: 37/03/05	BY: B4	DATE RELEASED: 01/07/99 RELEASED BY: 617	
STEP # 0	UNIT # 684	DRAWING NO. 684-C	REV. 0	