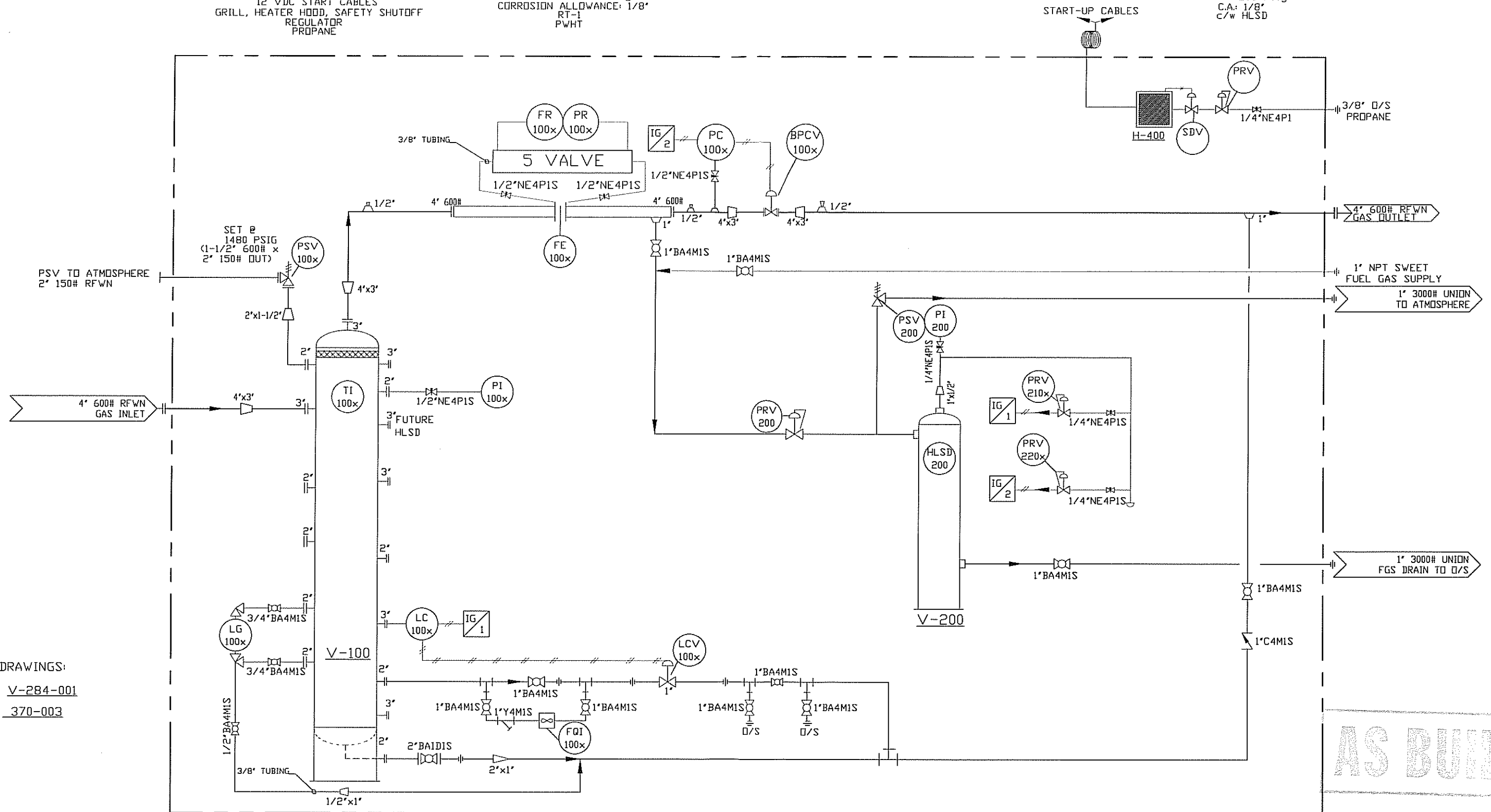


**H-400 BUILDING HEATER**  
 MAKE: CATADYNE  
 12,000 BTU/HR C/W 30"DF  
 12 VDC START CABLES  
 GRILL, HEATER HOOD, SAFETY SHUTOFF  
 REGULATOR  
 PROPANE

**V-100 3 PHASE VERT. SEPARATOR**  
 SIZE: 30" OD x 10'-0" S/S  
 DESIGN PRESSURE: 1480 PSIG @ 100°F  
 CORROSION ALLOWANCE: 1/8"  
 RT-1  
 PWHT

**V-200 FUEL GAS SCRUBBER**  
 SIZE: 6' x 36'  
 MAWP: 285 PSIG  
 C.A.: 1/8"  
 C/W HLSD



REF. DRAWINGS:  
 V-100 V-284-001  
 SKID 370-003

**AS BUILT**

ENGINEERS & PERMIT STAMPS

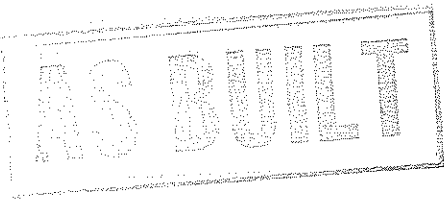
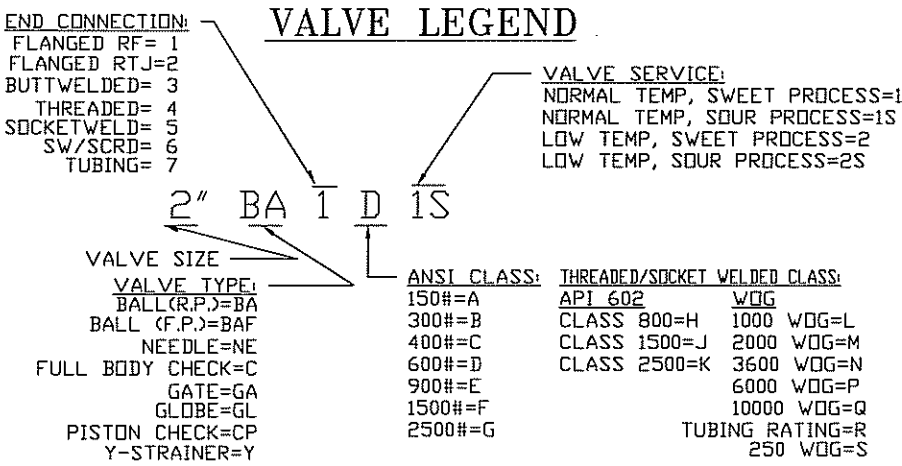
NO.	REVISIONS	DWN	APPR	DATE
2	AS BUILT	RK		01-04-09
1	ADD FGS AND ALT. TAKEDOFF PER CUSTOMER	CP		01-02-01
0	ISSUED FOR CONSTRUCTION	CP		01-01-31
A	ISSUED FOR APPROVAL	CP		01-01-29

**DELANEY ENERGY**  
 MANUFACTURING LTD.

DATE	01-01-29	CLIENT	GAUNTLET ENERGY CORPORATION c/o O'ROURKE ENGINEERING LTD.
DESIGNED BY	DELANEY	TITLE	30" OD x 10'-0" S/S 2 PHASE VERTICAL SEPARATOR PACKAGE DESIGN PRESSURE: 1480PSIG @ 100°F
DRAWN BY	C.PRICHARD	PROJECT NO.	370-001
CHECKED BY	[Signature]	FILENAME	370-001PID
APPROVED BY	[Signature]	REFERENCE NO.	
SCALE	N.T.S.	SHEET NO.	1 OF 1
		DRAWING NO.	CCL-370-001PID
		REV. NO.	2


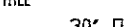

NOTES:

1. QUANTITIES IN B.O.M. ARE FOR ONE (1) UNIT.  
2. ALL PIPING TO BE IN ACCORDANCE WITH THE LATEST EDITION OF ANSI B31.3 PRESSURE PIPING CODE.  
3. VESSEL TO BE FABRICATED TO THE LATEST EDITION OF ASME SECTION VIII, DIVISION 1 PRESSURE VESSELS.  
4. WELDED PIPING TO BE: SA-106B SMLS PIPE, SPEC '600# ANSI', 4' @SCH.80, 3' @ SCH.80, 2' @ SCH.80, 1 1/2' @ SCH.80  
5. THREADED PIPING TO BE: SA-106B SMLS, 2'-SCH.80 (min.)  
6. ALL WELDED FITTINGS TO BE SA-234-WPB c/w SA-105N FLANGES  
7. ALL FORGED STEEL FITTINGS TO BE: SA-105N, 3000# (min.) RATING  
8. TUBING DETAILS: 3/8" S.S. TUBING c/w SWAGelok S.S. FITTINGS AND FERRULES  
9. PAINTING: PACKAGE TO BE CLEANED TO (SSPC-SP-6)  
1st COAT PRIMER: DEVDE FAST DRY PRIMER  
FINISH COAT: DEVDE GREY ENAMEL  
SKID FLOOR: ONE (1) COAT OF DEVDE GREY ENAMEL  
10. REMOVE ALL FLOATS/DISPLACERS FROM ALL LEVEL CONTROLLERS/SWITCHES; TAG AND CRATE FOR SHIPMENT  
11. PROTECT ALL OPENINGS FOR SHIPMENT  
12. BOLTING TO BE SA-193-B7M STUDS WITH SA-194-2HM NUTS c/w 316 S.S. FLEXITALLIC GASKETS  
13. BUILDING: SIZE: 10'-0"LG x 8'-0"WIDE  
ROOF TYPE: SHED WALL HEIGHTS: 9'-6" LOW EAVE x 10'-0" HIGH EAVE  
EXTERIOR: 22 GAUGE GALVALUME  
INTERIOR: 24 GAUGE FLUTED ALUMINUM, R-12 INSULATION IN ROOF AND WALLS  
DOORS: ONE (1) 3'-0"x7'-0" STEEL MAN DOOR WITH PANIC HARDWARE,  
CHECK CHAIN, WEATHER-STRIP, IWG WINDOW  
WINDOWS: ONE (1) 36"x38" DOUBLE GLAZED SLIDING c/w SCREEN  
VENTILATION: TWO (2) 12" Sq. STAMPED ALUMINUM LOUVERS c/w SCREEN, HI-LO CROSS MOUNTED  
14. BUTTWELDED PIPING TO BE X-RAYED 100% TO ASME B31.3 AND HYDROTEST 600# ANSI PIPING TO 2220 PSig (MINIMUM 1 HOUR) AT ROOM TEMP, PWHT REQUIRED

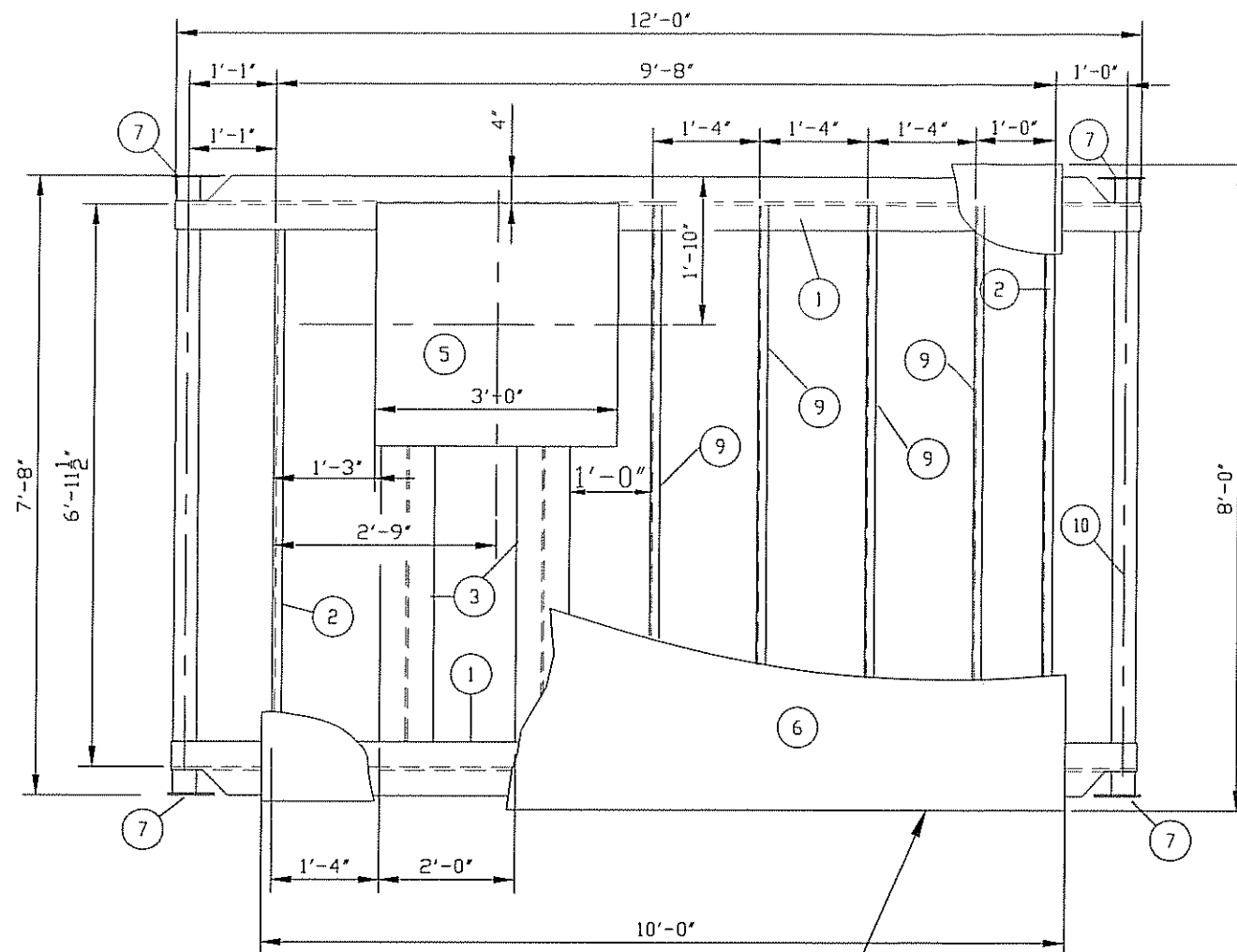


BILL OF MATERIALS

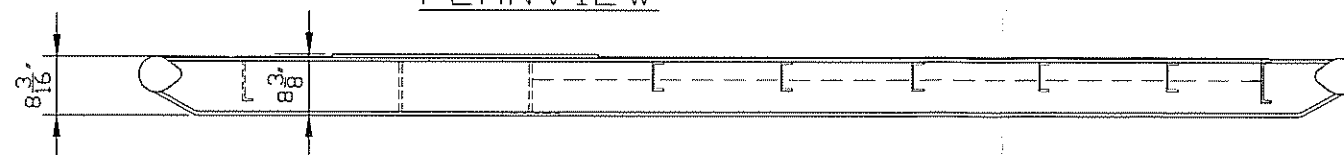
TAG	QTY.	MAKE	DESCRIPTION
FE-100x	1	DANIEL REMANU.	SENIOR METER RUN,4" 600# RF SCH.80 AGA 3C FIG c/w ONE(1) 316 S.S. DRIFICE PLATE ONE(1) TEFLON SEAL RING, ONE (1) 1" 3000# TOL & ONE(1) 3/4" 3000# TOL & STRAIGHTENING VANES (79" F/F)
FR/PR-100x	1	BARTON REMANU.	MODEL 202E 2 PEN RECORDER, SOUR. PRESSURE BOUNDARY, 0-100"W.C. DIFFERENTIAL PRESSURE, 0-1500 PSig STATIC ELEMENT, DISPOSABLE PENS c/w BATTERY CLOCK AND 5 VALVE S.S. MANIFOLD
PSV-100x	1	MERCER	1 1/2"600#RF x 2"150# RF RELIEF VALVE, SET @ 1480 PSig ON THE VESSEL. NACE
PSV-200	1	MERCER	1"NPT x 1" NPT MODEL 9100 SET @ 1580 PSig ON THE FGS, SOUR
LC-100x	1	NORRISEAL	2" NPT 1001A SERIES LIQUID LEVEL CONTROLLERS. SOUR SNAP, DIRECT ACTING 6-30 PSig RANGE, 22' FLOAT ARM, VENTED
LCV-100x	1	NORRISEAL	2276 LIQUID CONTROL VALVE, 1" NPT SOUR TRIM, 6-30 PSig RANGE,FAIL CLOSED SOUR. SERVICE, 3/8" TRIM
PI-100x	1	WIKA	PRESSURE INDICATOR 4" DIAL,0-1500 PSI DUAL SCALE. 1/2" NPT BOTTOM MOUNT SOUR
PI-200x	1	WIKA	PRESSURE INDICATOR 2 1/2" DIAL,0-300 PSI DUAL SCALE, 1/4" NPT BOTTOM MOUNT, SOUR
TI-100x	1	TREND	TEMPERATURE INDICATOR, 3" DIAL, -40°F-160°F RANGE, DUAL SCALE, c/w 1/2" x 3/4" x 6" 316 S.S. THERMOWELL 6" STEM, SOUR
PRV-210x PRV-220x	2	FISHER	MODEL 67 CFR REGULATORS 1/4"NPT 5-35 PSig RANGE. SOUR TRIM.
FQI-100x	1	BLANCETT	1" MNPT TURBINE METER, 5-50 GPM CAPACITY 5000 PSig MAWP, c/w DRT-100 BATTERY OPERATED TOTALIZER c/w LCD DISPLAY
LG-100x	1	PENBERTHY	MODEL 1RM5 REFLEX TYPE LEVEL GAUGE c/w 330J VALVES, NACE.
BPCV-100x	1	FISHER REMAN.	3" 600# RF 667-"D" BODY CONTROL VALVE, c/w SIZE 40 ACTUATOR, 6-30 PSig RANGE SOUR SERVICE. FAIL CLOSED. TRIM TBA
PC-100x	1	FISHER REMAN.	MODEL 4150K PRESSURE CONTROLLER, 6-30 PSig OUTPUT, SOUR SERVICE, K-MONEL, 0-1500 PSig BOURDON TUBE c/w YOKE MOUNT PARTS
PRV-200	1	FISHER	MODEL 630, 1" NPT REGULATOR, 46-95 PSig RANGE 2000# STEEL BODY, 3/16" TRIM, SOUR SERVICE
1"BA4M1S	10	MAS	1" NPT 2000# BALL VALVE R.P. SOUR SERVICE
1"C4M1S	1	WHEATLY	1" NPT 2160# CHECK VALVE SOUR SERVICE
3/4"BA4M1S	2	MAS	3/4" NPT 2000# BALL VALVE R.P. SOUR SERVICE
2"BA1D1S	1	NUTRON	2" 600# RF BALL VALVE R.P. SOUR SERVICE
1/2"NE4P1S	4	CENTURY	1/2" NPT 6000# MxF NEEDLE VALVE S.S., MODEL # CM2-1-M44T-B-V
1/4"NE4P1	1	CENTURY	1/4" NPT 6000# MxF NEEDLE VALVE CS, MODEL # CM2-2-M22T-B-V
1/2"BA4M1S	1	MAS	1/2" NPT 2000# R.P., BALL VALVE SOUR SERVICE
1/4"NE4P1S	3	CENTURY	1/4" NPT 6000# MxF NEEDLE VALVE SS, MODEL # CM2-3-M22T-B-V, SOUR

												DATE 01-01-29		CLIENT GAUNTLET ENERGY CORPORATION c/o O'ROURKE ENGINEERING LTD.							
												DESIGNED BY DELANEY		TITLE 30' OD x 10'-0" S/S 2 PHASE VERTICAL SEPARATOR PACKAGE DESIGN PRESSURE: 1480 PSIG @ 100°F							
												DRAWN BY C.PRICHARD									
												CHECKED BY 									
												APPROVED BY		PROJECT NO.		FIELD NAME 370-001BOM		REFERENCE NO.			
										SCALE N.T.S.		SHEET NO. 1 OF 1		DRAWING NO. CCL-370-001BOM		REV. NO. 					
										NO.		AS BUILT		RK		01-04-09		HALKIRK		ALBERTA	
										0		ADD FGS SYSTEM- ISSUED FOR CONSTRUCTION		CP		01-02-01					
										A		ISSUED FOR APPROVAL		CP		01-01-29					
										NO.		REVISIONS		DWN		CHK.		APPR		DATE	





PLANVIEW

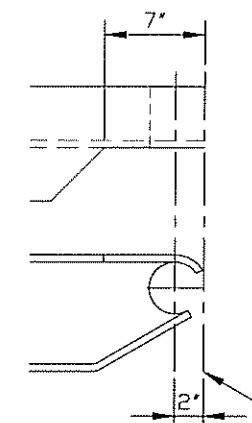


ELEVATION

NOTE:  
CHECKER PLATE SHALL HAVE A  
2" OVERHANG ALL THE WAY AROUND.

# BILL OF MATERIALS

MARK	QUANTITY	DESCRIPTION
1	2	W8 x 31# x 12'-0" LONG
2	2	C6 x 8.2# x 6'-11 3/8" LONG
3	2	W8 x 31# x 6'-11 3/8" LONG
4		
5	1	PLATE: 3'-0" x 3'-0" x 3/8" THK.
6	2	CHECKER PLATE: 10'-0" x 8'-0" x 3/16" THK.
7	4	PLATE: 7" x 5" x 1/4" THK.
8		
9	4	C4 x 5.4# x 6'-11 3/8" LONG
10	2	3"Ø PIPE x 7'-10" LONG



TYP. BEAM END DETAIL  
SCALE: 2x DRAWING SCALE

AS BUILT

REV. #	REVISION	BY	DWN	APPR.	DATE
1	AS BUILT			RK	01-03-16
0	ISSUED FOR CONSTRUCTION			CP	01-01-31
A	ISSUED FOR APPROVAL			CP	01-01-30

**DELANEY**  
**ENERGY**  
MANUFACTURING LTD.

HALKIRK

ALBERTA

DATE 01-01-30	GAUNTLET ENERGY CORPORATION c/o O'ROURKE ENGINEERING LTD.		
DESIGNED BY DELANEY			
DRAWN BY C.PRICHARD	TITLE 12'-0" x 8'-0" SKID BASE DRAWING FOR A 30"OD x 10'-0" S/S VERT. SEPARATOR PACKAGE C/W 8'-0" x 10'-0" BUILDING		
CHECKED BY OF	PROJECT NO. 370-001	FILENAME 370-003SKID	REFERENCE NO.
APPROVED BY	SCALE N.T.S.	SHEET NO. 1 OF 1	DRAWING NO. CCL-370-003SKD
			REV. NO. 1