

PLOT 26 Feb, 2014-9:23am, dhammondTHE INFORMATION CONTAINED HEREIN IS THE CONFIDENTIAL PROPERTY OF ENERFLEX, LTD. AND IS NOT FOR PUBLICATION, AND NO PART THEREOF SHALL BE COPIED OR COMMUNICATED TO A THIRD PARTY WITHOUT AUTHORIZATION FROM ENERFLEX, LTD.

PROJECT DESCRIPTION

ONE (1) NATURAL GAS COMPRESSOR PACKAGE
FOR: ENERFLEX RENTAL
LOCATION NAME: TBD
LOCATION LSD: TBD

FABRICATED BY:

ENERFLEX LTD.
CALGARY, ALBERTA, CANADA

TANK CAPACITIES

GLYCOL STORAGE TANK: 1,760 LITERS (465 US GALLONS)
WASTE OIL STORAGE TANK: 1,760 LITERS (465 US GALLONS)
COMPR. LUBE OIL DAYTANK: 556 LITERS (147 US GALLONS)
ENGINE LUBE OIL DAYTANK: 556 LITERS (147 US GALLONS)

DESIGN CRITERIA & APPLICABLE CODES

SITE ELEVATION:	TBD
BAROMETRIC PRESSURE:	13.055 PSIA (90 KPAA)
AMBIENT TEMPERATURE:	MAXIMUM 35°C (95°F) MINIMUM -29°C (-20°F)
PROCESS INLET:	DESIGN 635 PSIG @ 300°F (4378 kPag @ 149°C)
PROCESS FINAL DISCHARGE:	DESIGN 1650 PSIG @ 350°F (11376 kPag @ 117°C)
INSTRUMENT AIR:	MINIMUM PRESSURE 90 PSIG (620 kPag) MAXIMUM PRESSURE 115 PSIG (792 kPag) QUALITY FILTERED/DRY, 10°C (50°F) MAXIMUM DEW POINT
APPLICABLE CODE:	CODE PIPING B31.3 - 2010 NON-CODE PIPING EFX C01, 1mm CA VESSEL ASME SECTION VIII EXCHANGER ASME SECTION VIII STRUCTURAL CWB ELECTRICAL CEC/NEC
REGISTRATION:	VESSEL AB/BC/SK/NB PIPING TO BE COMPLETED UPON SITE LOCATION DEFINED
MISCELLANEOUS:	GASKETS CG TYPE, SPIRAL WOUND, GRAPHITE FILLED, 316SS BOLTING STUDS - SA-193-B7M, NUTS - SA-194-2HM PROCESS PIPE CARBON STEEL UTILITY PIPE CARBON STEEL FLANGES RAISED FACE (UNLESS OTHERWISE NOTED) ORIFICE PLATES REMOVABLE SIZED BORE ORIFICE PLATES
ELECTRICAL:	RIGID ALUMINUM CONDUIT
SUITABLE FOR USE IN:	CLASS 1, DIV 2, GROUP D/CLASS 1, ZONE 2

SYSTEM CONSUMABLES

COMPRESSOR CRANKCASE LUBE OIL: SAE 40 (LOW ASH), 140 LITERS (37 US GALLONS)
COMPRESSOR CYLINDER LUBE OIL: SAE 40, LOW ASH
ENGINE CRANKCASE LUBE OIL: SAE 40, LOW ASH, 719 LITERS (190 US GALLONS)
GLYCOL: 50% ETHYLENE INHIBITED GLYCOL/WATER SOLUTION
IN ENGINE AND AUXILIARY JACKET WATER SYSTEMS.
EXPANSION TANK CAPACITY: 190 LITERS (50 US GALLONS) FOR JW SECTION;
26 LITERS (7 US GALLONS) FOR AJW SECTION.
FULL SYSTEM VOLUME: 995 LITERS (263 US GALLONS FOR JW SECTION;
178 LITERS (47 US GALLONS FOR AJW SECTION.

POWER REQUIREMENTS

ENGINE IGNITION SYSTEM:	VOLTS: 24 VDC	AMPS: NOM: 10 MAX: 15
CONTROL PANEL:	VOLTS: 24 VDC	AMPS: NOM: 10 MAX: 15
BUILDING HEATER (x4):	VOLTS: 24 VDC	
COOLER MOTOR:	-	

DESIGN SPECIFICATION:

ENERFLEX LTD. (EFX) SCOPE OF SUPPLY ON THIS PROJECT CONSISTS OF ONE SKIDDED GAS COMPRESSOR PACKAGE.

PACKAGE CONSISTS OF ONE (1) WAUKESHA L7042GSI ENGINE DRIVING AN ARIEL JGK/4, THREE/TWO STAGE, SOUR NATURAL GAS COMPRESSOR.

PROCESS PIPING:	-100% RADIOGRAPHIC TESTING -1/8" CORROSION ALLOWANCE -PWHT -SPOOLING BETWEEN CONE STRAINER AND COMPRESSOR SUCTION FLANGE MECHANICALLY CLEANED INTERNALLY (SSPC-SP3), AS REQUIRED -NO PICKLING -PAINT PRIME
VESSELS:	-100% RADIOGRAPHIC TESTING - RT1 -1/8" CORROSION ALLOWANCE -PWHT -SUCTION VESSELS BETWEEN CONE STRAINER AND COMPRESSOR SUCTION FLANGE MECHANICALLY CLEANED INTERNALLY (SSPC-SP3), AS REQUIRED -NO PICKLING -PAINT PRIME

PROCESS	
TUBING SPECIFICATION	ENERFLEX: G-S16-S16-S16-S16-375
TUBING MATERIAL	316SS
FITTING MATERIAL	316SS
OD	MINIMUM WALL THICKNESS*
--	--
3/8"	0.035" 21842 kPag MAX.
1/2"	0.049" 24490 kPag MAX.
--	--
--	--
--	--
UTILITY	
TUBING SPECIFICATION	ENERFLEX: G-S04-CSZ-CS-S16-375
TUBING MATERIAL	304SS
FITTING MATERIAL	CS C/W BACK FERRULE
OD	MINIMUM WALL THICKNESS*
1/4"	0.028" 13789 kPag MAX.
1/4"	0.035" 17236 kPag MAX.
3/8"	0.035" 11031 kPag MAX.
3/8"	0.049" 16547 kPag MAX.
1/2"	0.049" 12410 kPag MAX.
FRAME INTERNALS	
TUBING SPECIFICATION	ENERFLEX: G-S16-S16-S16-S16-375
TUBING MATERIAL	316SS
FITTING MATERIAL	316SS
TUBING TRAYS	-

FINAL
AS BUILT

NAME A.HAMMOND DATE FEB 26/14

						DATE	JUL 29/13	SCALE	NTS	ENERFLEX RENTAL WAUKESHA L7042GSI ARIEL JGK4-3/2 L2C SOUR	ENERFLEX Calgary, Alberta, Canada	P&I DIAGRAM PROJECT DESCRIPTION & OVERVIEW				
	2	AS BUILT - RENTAL	FEB 26/14	AH	PO	DRAWN BY	H. LIU	CHECKED BY	H. LIU						APPROVED BY	G. HUSZTI
	1	AS BUILT	NOV 18/13	HBL	GCH	PROJECT MANAGER		PROJECT ENGINEER							G. HUSZTI	H. LIU
	0	ISSUED FOR CONSTRUCTION	SEP 16/13	HBL	GCH	CUST PO										
	A	ISSUED FOR APPROVAL	JUL 29/13	HBL	GCH											
	REV	DESCRIPTION	DATE	BY	APR	APEGGA PERMIT No:		P8651	OPER. CODE						WORK ORDER	E000733-01

PLOT 26 Feb. 2014-9:23am. dhammond@enerflex.com. dhammond@enerflex.com. THE INFORMATION CONTAINED HEREIN IS THE CONFIDENTIAL PROPERTY OF ENERFLEX, LTD. AND IS NOT FOR PUBLICATION, AND NO PART THEREOF SHALL BE COPIED OR COMMUNICATED TO A THIRD PARTY WITHOUT AUTHORIZATION FROM ENERFLEX, LTD.

V4211
1ST STAGE SUCTION SCRUBBER

MFG: ENERFLEX LTD.
SIZE: 36"(914.4mm) OD X 72"(1828.8mm) S/S
MAWP: 4516 kPag @ 149°C
MDMT: -29°C @ 4516 kPag
CA: 1/8"
MATERIAL: CARBON STEEL
ELEMENTS: MESH PAD

V4220
1ST STAGE SUCTION BOTTLE

MFG: ENERFLEX LTD.
SIZE: 24"(609.6mm) OD X 64"(1625.6mm) S/S
MAWP: 4516 kPag @ 149°C
MDMT: -29°C @ 4516 kPag
CA: 1/8"
MATERIAL: CARBON STEEL

V4222
1ST STAGE DISCHARGE BOTTLE

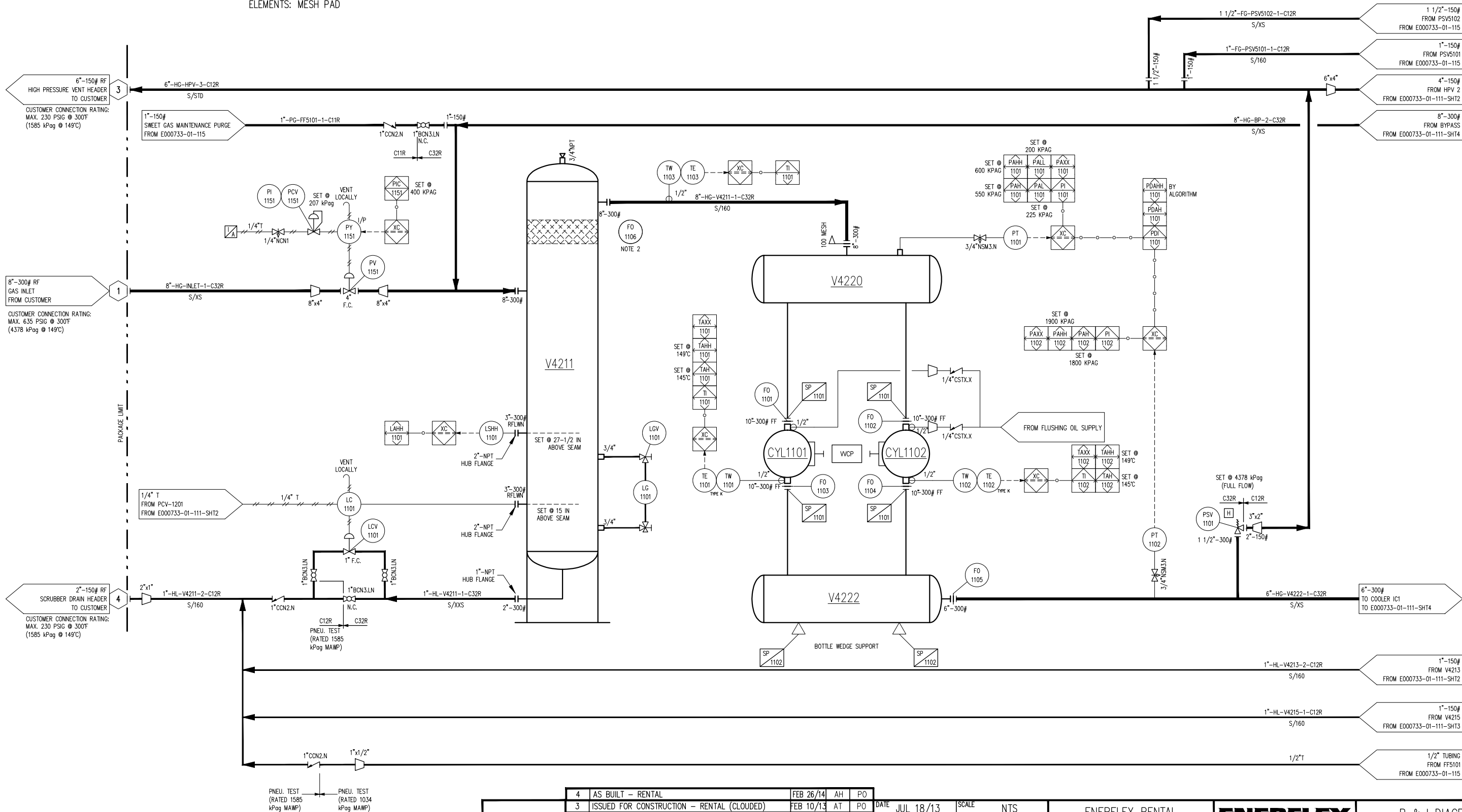
MFG: ENERFLEX LTD.
SIZE: 20"(508mm) OD X 74"(1879.6mm) S/S
MAWP: 4378 kPag @ 177°C
MDMT: -29°C @ 4378 kPag
CA: 1/8"
MATERIAL: CARBON STEEL

CYL1101
COMPRESSOR CYLINDER

MFG: ARIEL
MODEL: 14 1/8 K
SIZE: 13.625"(376mm) BORE
MAWP: 4378 kPag
THROW: #1

CYL1102
COMPRESSOR CYLINDER

MFG: ARIEL
MODEL: 14 1/8 K
SIZE: 13.625"(376mm) BORE
MAWP: 4378 kPag
THROW: #3



- NOTES:
1. SOUR SERVICE \leq 2%
 2. SHIP LOOSE TO REPLACE STRAINER.

**FINAL
AS BUILT**

NAME: A.HAMMOND DATE: FEB 26/14

4	AS BUILT - RENTAL	FEB 26/14	AH	PO
3	ISSUED FOR CONSTRUCTION - RENTAL (CLOUDED)	FEB 10/13	AT	PO
2	ADDED FLUSHING OIL FOR CYLINDER	DEC10/13	HBL	GCH
1	AS BUILT	NOV18/13	HBL	GCH
0	ISSUED FOR CONSTRUCTION	SEP 16/13	HBL	GCH
B	UPDATED PER PRELIMINARY STUDY & PID REVIEW	AUG 18/13	HBL	GCH
A	FOR APPROVAL	JUL 18/13	HBL	GCH
REV	DESCRIPTION	DATE	BY	APR

DATE	JUL 18/13	SCALE	NTS
DRAWN BY	H.LIU	CHECKED BY	P.O'CONNOR
PROJECT MANAGER	S.PRITCHARD	PROJECT ENGINEER	P.O'CONNOR
CUST PO			
APEGGA PERMIT No:	P8651	OPER. CODE	
WORK ORDER			

ENERFLEX RENTAL
WAUKESHA L7042GSIE
ARIEL JGK4-3/2 L2C SOUR

ENERFLEX
Calgary, Alberta,
Canada

P & I DIAGRAM
PROCESS GAS-3/2 STG SOUR
STAGE #1

DWG NO	E000733-01-111	SHT	1	REV	4
--------	----------------	-----	---	-----	---

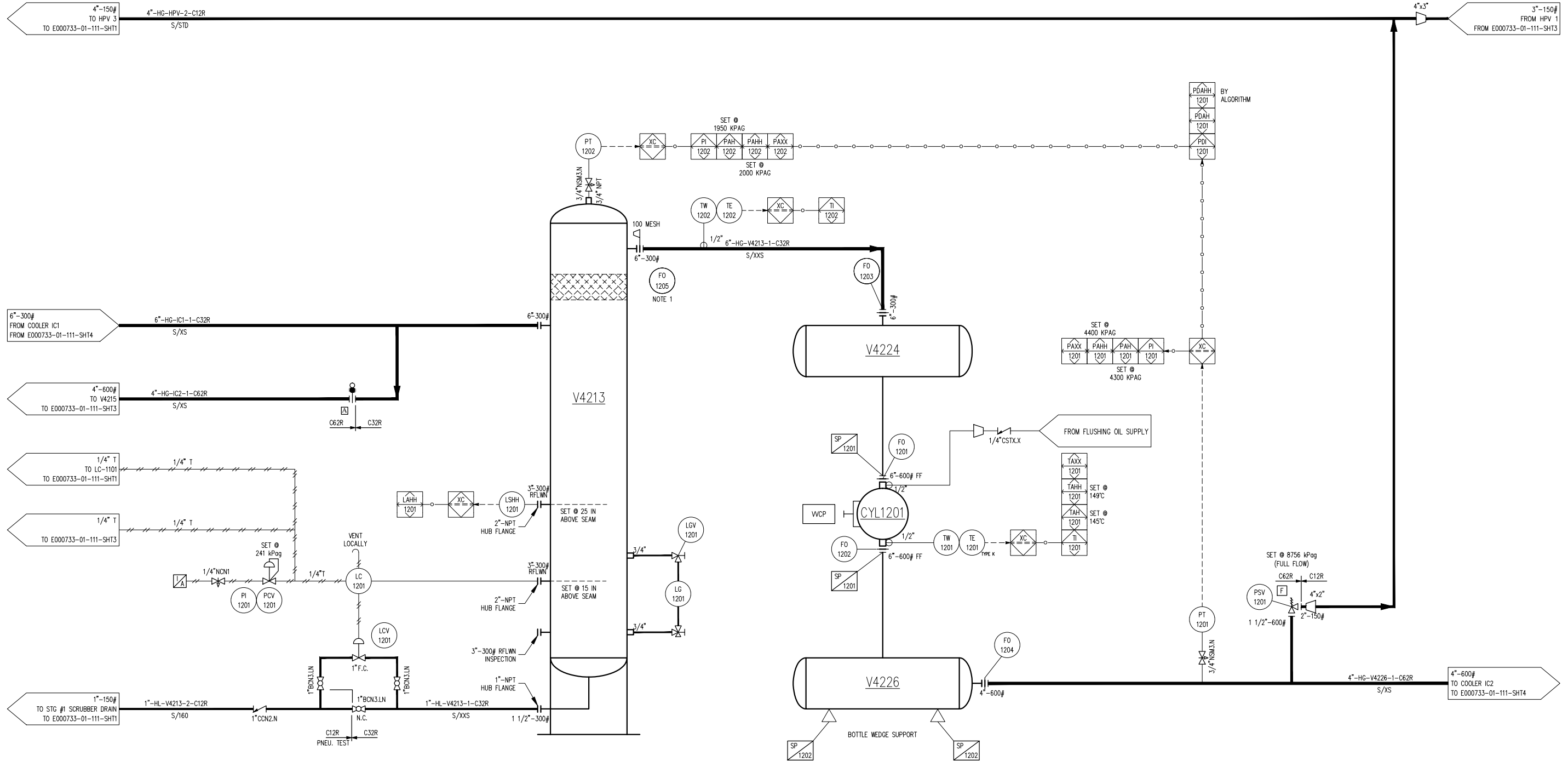
PLOT 26 Feb, 2014-9:23am, dhammond@enerflex.com THE INFORMATION CONTAINED HEREIN IS THE CONFIDENTIAL PROPERTY OF ENERFLEX, LTD. AND IS NOT FOR PUBLICATION, AND NO PART THEREOF SHALL BE COPIED OR COMMUNICATED TO A THIRD PARTY WITHOUT AUTHORIZATION FROM ENERFLEX, LTD.

V4213
2ND STAGE SUCTION SCRUBBER
MFG: ENERFLEX LTD.
SIZE: 24"(609.6mm) OD X 66"(1676.4mm) S/S
MAWP: 4516 kPag @ 149°C
MDMT: -29°C @ 4516 kPag
CA: 1/8"
MATERIAL: CARBON STEEL
ELEMENTS: MESH PAD

V4224
2ND STAGE SUCTION BOTTLE
MFG: ENERFLEX LTD.
SIZE: 18"(457.2mm) OD X 30"(762mm) S/S
MAWP: 4516 kPag @ 149°C
MDMT: -29°C @ 4516 kPag
CA: 1/8"
MATERIAL: CARBON STEEL

V4226
2ND STAGE DISCHARGE BOTTLE
MFG: ENERFLEX LTD.
SIZE: 18" OD(457.2mm) X 30"(762mm) S/S
MAWP: 8873 kPag @ 177°C
MDMT: -29°C @ 8873 kPag
CA: 1/8"
MATERIAL: CARBON STEEL

CYL1201
2ND STAGE COMPRESSION CYLINDER
MFG: ARIEL
MODEL: 9 5/8 K
SIZE: 9.625"(244.5mm) BORE
MAWP: 8756 kPag
THROW: #4



NOTES:
1. SHIP LOOSE TO REPLACE STRAINER.

**FINAL
AS BUILT**

NAME A.HAMMOND DATE FEB 26/14

4	AS BUILT -- RENTAL	FEB 26/14	AH	PO
3	ISSUED FOR CONSTRUCTION -- RENTAL (CLOUDED)	FEB 10/14	AT	PO
2	ADDED FLUSHING OIL FOR CYLINDER	DEC10/13	HBL	GCH
1	AS BUILT	NOV18/13	HBL	GCH
0	ISSUED FOR CONSTRUCTION	SEP 16/13	HBL	GCH
B	UPDATED PER PRELIMINARY STUDY & PID REVIEW	AUG 16/13	HBL	GCH
A	FOR APPROVAL	JUL 18/13	HBL	GCH
REV	DESCRIPTION	DATE	BY	APR

DATE	JUL 18/13	SCALE	NTS
DRAWN BY	H.LIU	CHECKED BY	P.O'CONNOR
PROJECT MANAGER	S.PRITCHARD	PROJECT ENGINEER	P.O'CONNOR
CUST PO			

APEGGA PERMIT No:	P8651	OPER. CODE	
WORK ORDER			

ENERFLEX RENTAL
WAUKESHA L7042GSIE
ARIEL JGK4-3/2 L2C SOUR

ENERFLEX
Calgary, Alberta,
Canada

DWG NO E000733-01-111

P & I DIAGRAM
PROCESS GAS-3/2 STG SOUR
STAGE #2

SHT 2 REV 4

THE INFORMATION CONTAINED HEREIN IS THE CONFIDENTIAL PROPERTY OF ENERFLEX, LTD., AND IS NOT FOR PUBLICATION, AND NO PART THEREOF SHALL BE COPIED OR COMMUNICATED TO A THIRD PARTY WITHOUT AUTHORIZATION FROM ENERFLEX, LTD.

V4215

3RD STAGE SUCTION SCRUBBER

MFG: ENERFLEX LTD.

SIZE: 20"(508mm) OD X 60"(1524mm) S/S

MAWP: 9032 kPag @ 149°C

MDMT: -29°C @ 9032 kPag

CA: 1/8"

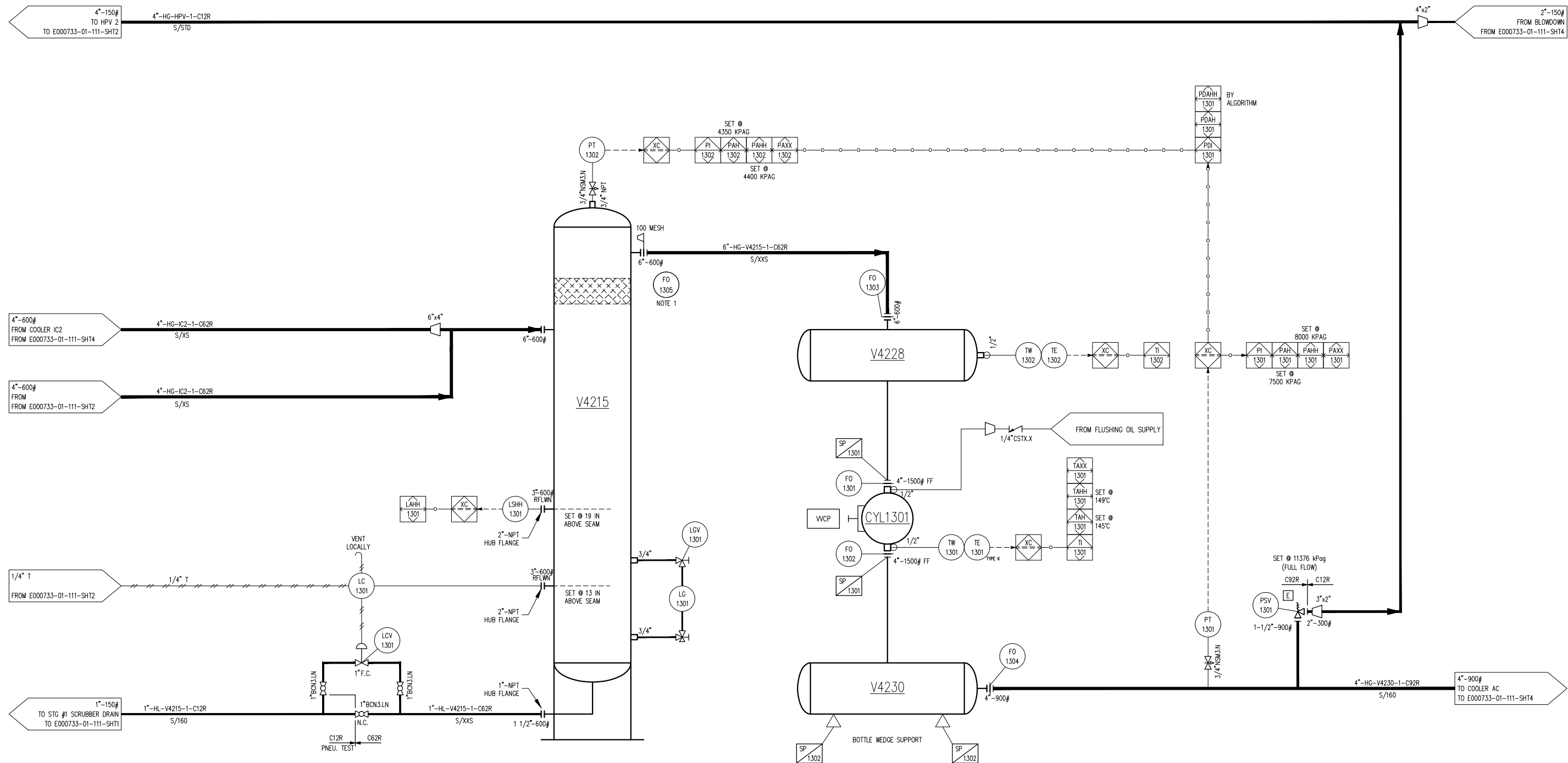
MATERIAL: CARBON STEEL

ELEMENTS: MESH PAD

V4228
3RD STAGE SUCTION BOTTLE
MFG: ENERFLEX LTD.
SIZE: 16" (406.4mm) OD X 18" (457.2mm) S/S
MAWP: 9032 kPag @ 149°C
MDMT: -29°C @ 9032 PSIG
CA: 1/8"
MATERIAL: CARBON STEEL

V4230
3RD STAGE DISCHARGE BOTTLE
MFG: ENERFLEX LTD.
SIZE: 16"(406.4mm) OD X 49"(1244.6mm) S/S
MAWP: 11376 @ 177°C
MDMT: -29°C @ 11376 kPag
CA: 1/8"
MATERIAL: CARBON STEEL

CYL1301
3RD STAGE COMPRESSOR CYLINDER
MFG: ARIEL
MODEL: 6 1/4 K
SIZE: 6.250"(15.88mm) BORE
MAWP: 16788 kPag
THROW: #2



**FINAL
AS BUILT**

NAME A. HAMMOND DATE FEB 26/14

NOTES:
1. SHIP LOOSE TO REPLACE STRAINER.

4	AS BUILT – RENTAL	FEB 26/14	AH	PO
3	ISSUED FOR CONSTRUCTION – RENTAL (CLOUDED)	FEB 10/14	AT	PO
2	ADDED FLUSHING OIL FOR CYLINDER	DEC10/13	HBL	GCH
1	AS BUILT	NOV18/13	HBL	GCH
0	ISSUED FOR CONSTRUCTION	SEP 16/13	HBL	GCH
B	UPDATED PER PRELIMINARY STUDY & PID REVIEW	AUG 16/13	HBL	GCH
A	FOR APPROVAL	JUL 18/13	HBL	GCH
REV	DESCRIPTION	DATE	BY	APR

DATE JUL 18/13		SCALE NTS	
DRAWN BY H. LIU		CHECKED BY P.O'CONNOR	APPROVED BY S.PRITCHARD
PROJECT MANAGER S.PRITCHARD		PROJECT ENGINEER P.O'CONNOR	
CUST PO			

ENERFLEX RENTAL
WAUKESHA L7042GSIE
ARIEL JGK4-3/2 L2C SOUR

ENERFLEX
Calgary, Alberta,
Canada

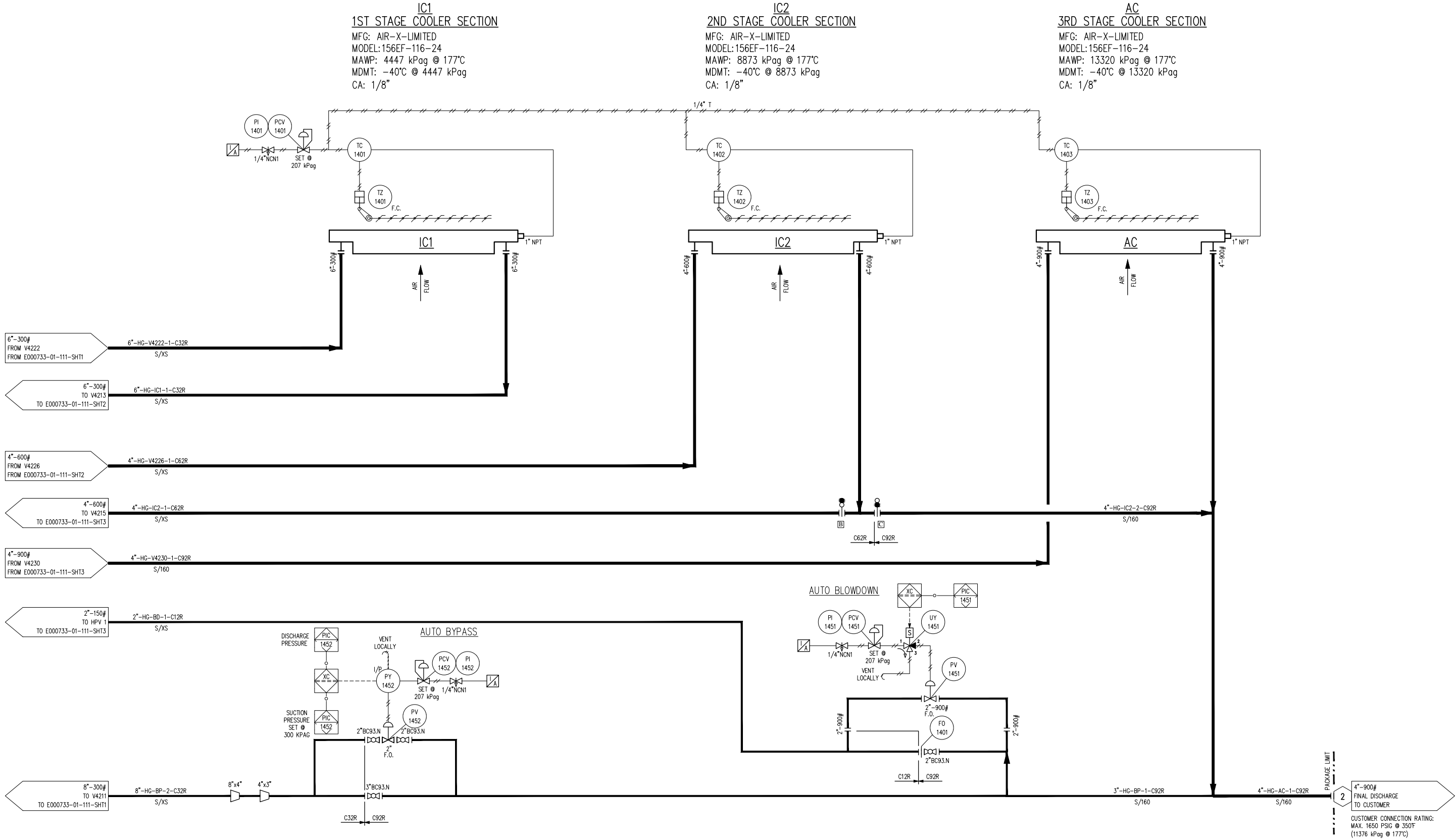
P & I DIAGRAM
PROCESS GAS-3/2 STG SOUR
STAGE #3

DWG
NO E000733-01-111

SHT	3
-----	---

REV 4

PLOT 26 Feb. 2014-9:23am. dhammond THE INFORMATION CONTAINED HEREIN IS THE CONFIDENTIAL PROPERTY OF ENERFLEX, LTD. AND IS NOT FOR PUBLICATION, AND NO PART THEREOF SHALL BE COPIED OR COMMUNICATED TO A THIRD PARTY WITHOUT AUTHORIZATION FROM ENERFLEX, LTD.



**FINAL
AS BUILT**
NAME: A. HAMMOND DATE: FEB 26/14

	3	AS BUILT – RENTAL	FEB 26/14	AH	PO	DATE	JUL 18/13	SCALE	NTS	ENERFLEX RENTAL WAUKESHA L7042GSIE ARIEL JGK4–3/2 L2C SOUR	ENERFLEX Calgary, Alberta, Canada	P & I DIAGRAM PROCESS GAS–3/2 STG SOUR PROCESS COOLER						
	2	ISSUED FOR CONSTRUCTION – RENTAL (CLOUDED)	FEB 10/14	AT	PO	DRAWN BY	H. LIU	CHECKED BY	P.O'CONNOR						APPROVED BY	S.PRITCHARD		
	1	AS BUILT	NOV 18/13	HBL	GCH	PROJECT MANAGER		S.PRITCHARD							PROJECT ENGINEER		P.O'CONNOR	
	0	ISSUED FOR CONSTRUCTION	SEP 16/13	HBL	GCH	CUST PO												
	B	UPDATED PER PRELIMINARY STUDY & PID REVIEW	AUG 16/13	HBL	GCH													
	A	FOR APPROVAL	JUL 18/13	HBL	GCH													
REV	DESCRIPTION		DATE	BY	APR	AEPGGA PERMIT No:		P8651		OPER. CODE	WORK ORDER	DWG NO	E000733–01–111		SHT	4	REV	3

PLOT DATE: February 26, 2014 THE INFORMATION CONTAINED HEREIN IS THE CONFIDENTIAL PROPERTY OF ENERFLEX, LTD. AND IS NOT FOR PUBLICATION, AND NO PART THEREOF SHALL BE COPIED OR COMMUNICATED TO A THIRD PARTY WITHOUT AUTHORIZATION FROM ENERFLEX, LTD.

C-2101
RECIPROCATING GAS COMPRESSOR FRAME

MFG: ARIEL
MODEL: JGK/4
RATED POWER: 2540 HP @ 1200 RPM
STROKE: 5.50 in (139.7mm)
ROD LOAD, TOTAL: 74,000 lbs (33,565 kg)
ROD LOAD, COMPRESSION: 40,000 lbs (18,143 kg)
ROD LOAD, TENSION: 37,000 lbs (16,783 kg)

CE-2101
COMPRESSOR ENGINE

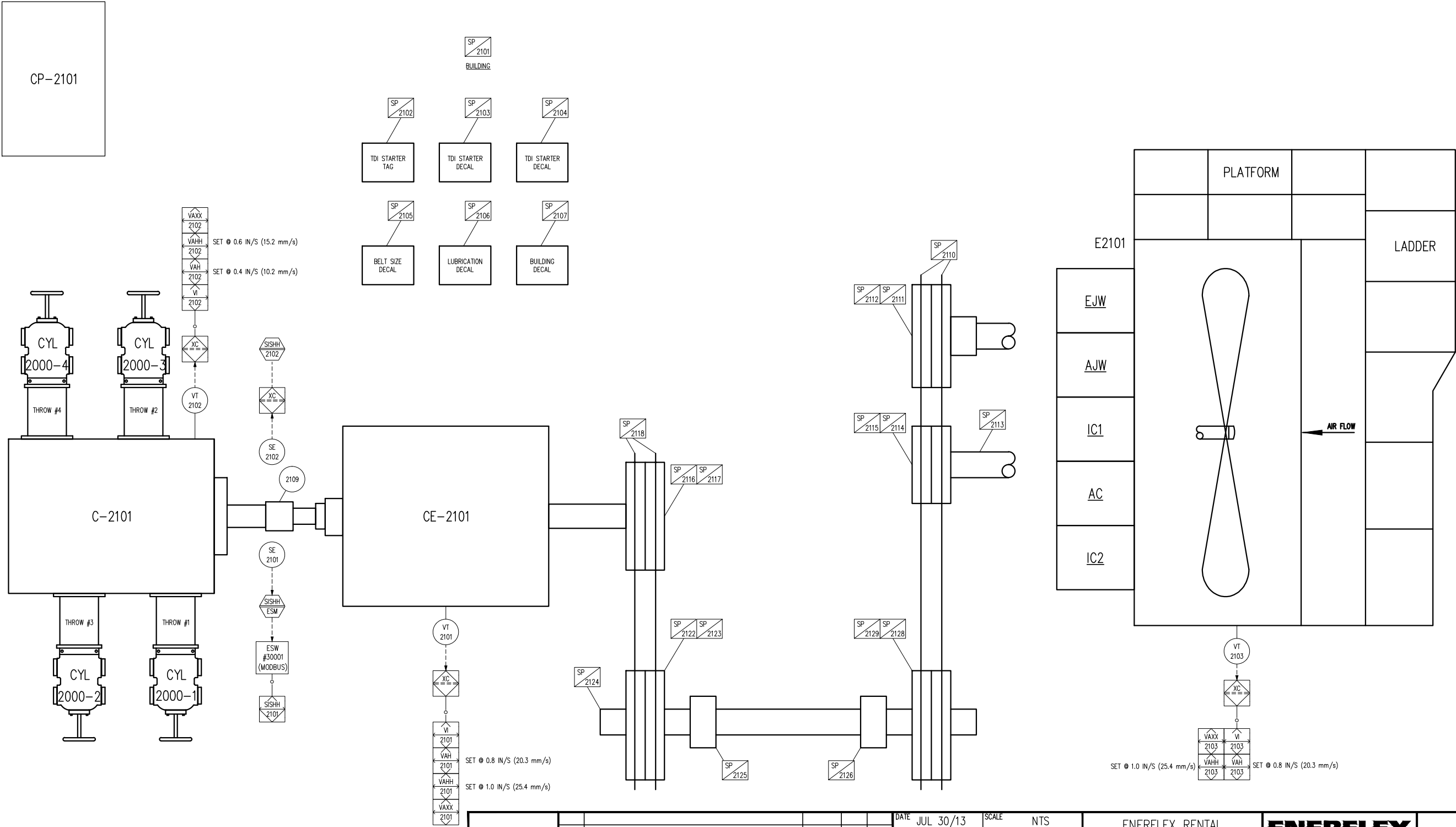
MFG: WAUKESHA
MODEL: L7042GSI
BORE: 9.375" (238.1mm)
STROKE: 8.5" (215.9mm)
DISPLACEMENT: 7040 CU. IN (115,365 cc)
COMP. RATIO: 8:1
POWER: 1480 BHP @ 1200 RPM

CP-2101
CONTROL PANEL

MFG: ENERFLEX AB COMPACTLOGIX
STANDARD

E-2101
PACKAGE GAS COOLER FRAME

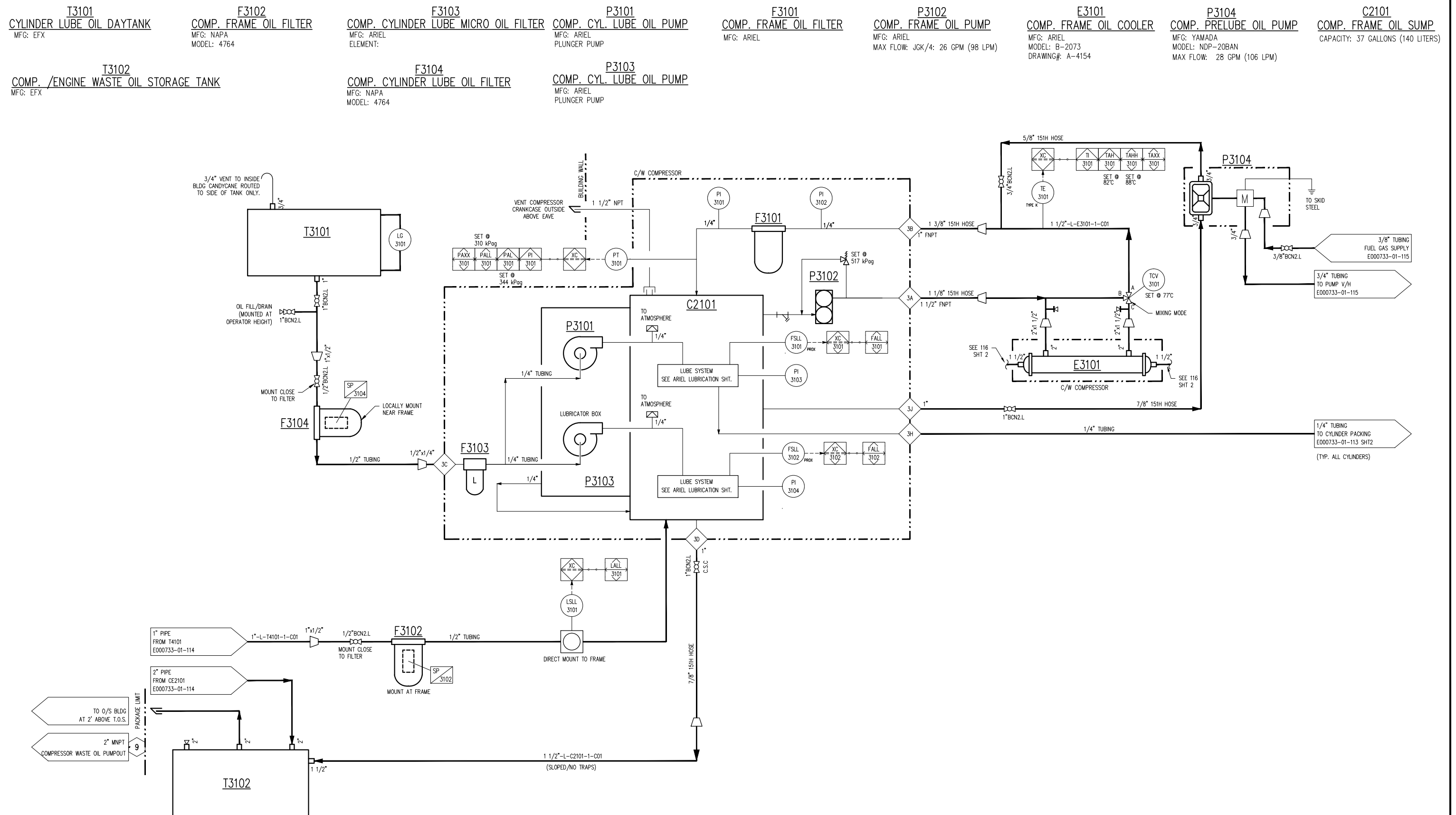
MFG: AIR-X-LIMITED
MODEL: 156EF-116-24
TYPE: FORCED DRAFT
AIR FLOW: 197,616 SCFM
FAN TYPE: (1) MOORE 156"DIA. x 10 BLADES
FAN POWER: 52.8 BHP @ 265 RPM (PER FAN)
FAN BLADE PITCH: 13.9 DEGS
AMBIENT AIR TEMPERATURE: PROCESS/95°F; WATER/100°F




FINAL
AS BUILT
NAME: A.HAMMOND DATE: FEB 26/2014

						DATE	JUL 30/13	SCALE	NTS	ENERFLEX RENTAL WAUKESHA L7042GSIE ARIEL JGK4-3/2 L2C SOUR	ENERFLEX Calgary, Alberta, Canada	P & I DIAGRAM DRIVE TRAIN					
	2	AS BUILT - RENTAL	FEB 26/14	AH	PO	DRAWN BY	H.LIU	CHECKED BY	P.O'CONNOR						APPROVED BY	S.PRITCHARD	
	1	AS BUILT	NOV 18/13	HBL	GCH	PROJECT MANAGER		S.PRITCHARD							PROJECT ENGINEER		P.O'CONNOR
	0	ISSUED FOR CONSTRUCTION	SEP 16/13	HBL	GCH	CUST PO											
	A	FOR APPROVAL	JUL 30/13	HBL	GCH												
	REV	DESCRIPTION	DATE	BY	APR	APEGGA PERMIT No: P8651		OPER CODE		WORK ORDER E000733-01							
										DWG NO E000733-01-112		SHT 1	REV 2				

PLOT DATE February 26, 2014



**FINAL
AS BUILT**
NAME A.HAMMOND DATE FEB 26/14

	3	AS BUILT – RENTAL	FEB 26/14	AH	PO	DATE	JUL 18/13	SCALE	NTS	ENERFLEX RENTAL WAUKESHA L7042GSIE ARIEL JGK4-3/2 L2C SOUR	 ENERFLEX Calgary, Alberta, Canada	P&I DIAGRAM COMP. LUBE OIL & UTILITIES JGK4 – L2C GUIDE	DWG NO E000733-01-113-SHT1	SHT 1 OF 2	REV 3					
	2	ISSUED FOR CONSTRUCTION – RENTAL (CLOUDED)	FEB 10/14	AT	PO	DRAWN BY	H.LIU	CHECKED BY	P.O'CONNOR							APPROVED BY	S.PRITCHARD			
	1	AS BUILT	NOV 18/13	HLB	GCH	PROJECT MANAGER	S.PRITCHARD	PROJECT ENGINEER	P.O'CONNOR							CUST PO				
	0A	UPDATED PER PRE-FAB MEETING	SEP 25/13	HLB	GCH															
	0	ISSUED FOR CONSTRUCTION	SEP 16/13	HLB	GCH															
	A	FOR APPROVAL	JUL 18/13	HLB	GCH															
REV		DESCRIPTION	DATE	BY	APR	APEGGA PERMIT No: P8651			OPER CODE	WORK ORDER										

PLOT 26 Feb. 2014-9:23am. dhammond@enerflex.com. dhammond@enerflex.com. INFORMATION CONTAINED HEREIN IS THE CONFIDENTIAL PROPERTY OF ENERFLEX, LTD. AND IS NOT FOR PUBLICATION, AND NO PART THEREOF SHALL BE COPIED OR COMMUNICATED TO A THIRD PARTY WITHOUT AUTHORIZATION FROM ENERFLEX, LTD.

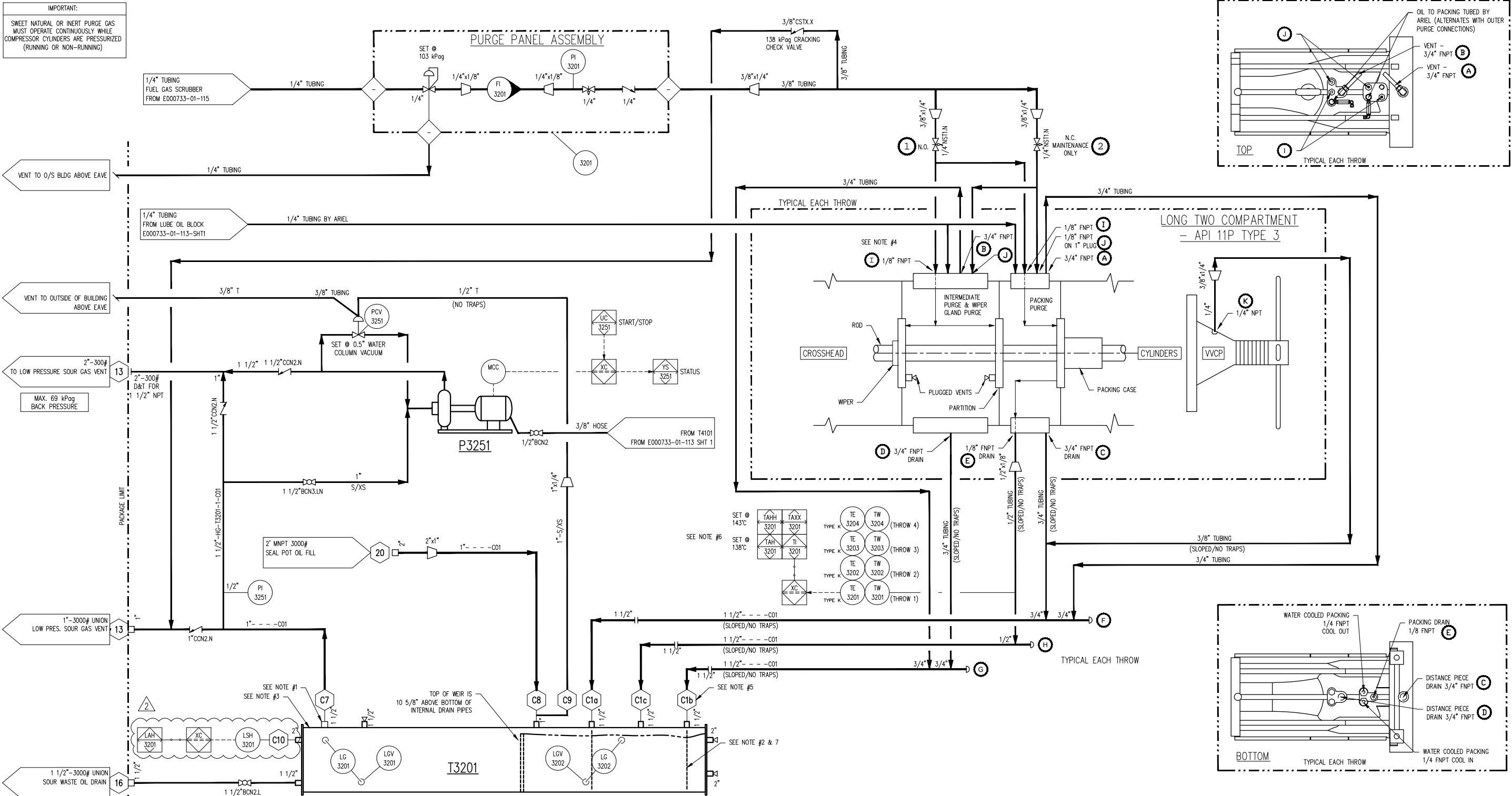
**P3251
VACUUM PUMP**

MFG: EAGLE
MODEL: LGA-18-3-18-1
3 HP, 1725 RPM
115/230VAC/1PH/60HZ XP MOTOR

**T3201
SEAL POT/SOUR WASTE OIL TANK**

MFG: EFX
CAPACITY: 47 GALLONS (178 LITERS) (SEE NOTE #7)

IMPORTANT:
SWEET NATURAL OR INERT PURGE GAS
MUST OPERATE CONTINUOUSLY WHILE
COMPRESSOR CYLINDERS ARE PRESSURIZED
(RUNNING OR NON-RUNNING)



NOTES:

- VENTING SOUR WASTE OIL TANK TO ATMOSPHERE IS NOT RECOMMENDED FOR SAFETY REASONS.
- SEAL POT TO BE CHARGED WITH OIL (SAE 30/40) PRIOR TO START UP.
- TOP OF OIL SEAL POT ELEVATION SHALL BE NO LESS THAN 6" BELOW BOTTOM OF DISTANCE PIECES.
- LETTER TAGS REFER TO CAC-ENG-DAN-003, "ARIEL VENTING AND DRAINING REQUIREMENTS".
- C# TAGS REFER TO DWG. PNNNN-SEALPOT.
- PACKING TEMPERATURE SET POINTS MUST BE REVIEWED AND RESET POST START UP.
- TAH SET POINT = NORMAL TEMP. + 18°F
TAXH SET POINT = NORMAL TEMP. + 27°F
- REFER TO CAC-ENG-DAN-001, "SOUR GAS SEAL POTS FUNCTION AND DESIGN" FOR SIZING AND SELECTION.

**FINAL
AS BUILT**
NAME: A.HAMMOND DATE: FEB 26/14

	3	AS BUILT – RENTAL	FEB 26/14	AH	PO	DATE	JUL 18/13	SCALE	NTS	ENERFLEX RENTAL WAUKESHA L7042GSIE ARIEL JGK4-3/2 L2C SOUR	ENERFLEX Calgary, Alberta, Canada	P&I DIAGRAM COMP. LUBE OIL/UTILITIES JGK4 – L2C GUIDE				
	2	ISSUED FOR CONSTRUCTION – RENTAL (CLOUDED)	FEB 10/14	AT	PO	DRAWN BY	H.LIU	CHECKED BY	P.O'CONNOR				APPROVED BY	S.PRITCHARD		
	1	AS BUILT	NOV 18/13	HBL	GCH	PROJECT MANAGER	S.PRITCHARD	PROJECT ENGINEER	P.O'CONNOR							
	0A	UPDATED PER PRE-FAB MEETING	SEP 25/13	HBL	GCH	CUST PO										
	0	ISSUED FOR CONSTRUCTION	SEP 16/13	HBL	GCH											
	A	FOR APPROVAL	JUL 18/13	HBL	GCH											
	REV	DESCRIPTION	DATE	BY	APR	APEGGA PERMIT No:	P8651	OPER. CODE	WORK ORDER							
											DWG NO	E000733-01-113-SHT2	SHT	2 OF 2	REV	3

ENERFLEX
Calgary, Alberta,
Canada

WUKESHA L7042GSIE
ARIEL JGK4-3/2 L2C SOUR

DWG NO: E000733-01-113-SHT2

SHT 2 OF 2

REV 3

PLOT 26 Feb, 2014-9:23am, dhammond@enerflex.com THE INFORMATION CONTAINED HEREIN IS THE CONFIDENTIAL PROPERTY OF ENERFLEX, LTD., AND IS NOT FOR PUBLICATION, AND NO PART THEREOF SHALL BE COPIED OR COMMUNICATED TO A THIRD PARTY WITHOUT AUTHORIZATION FROM ENERFLEX, LTD.

F4103
OIL STRAINER (C/W ENGINE)

F4102
ENGINE OIL FILTER (C/W ENGINE)

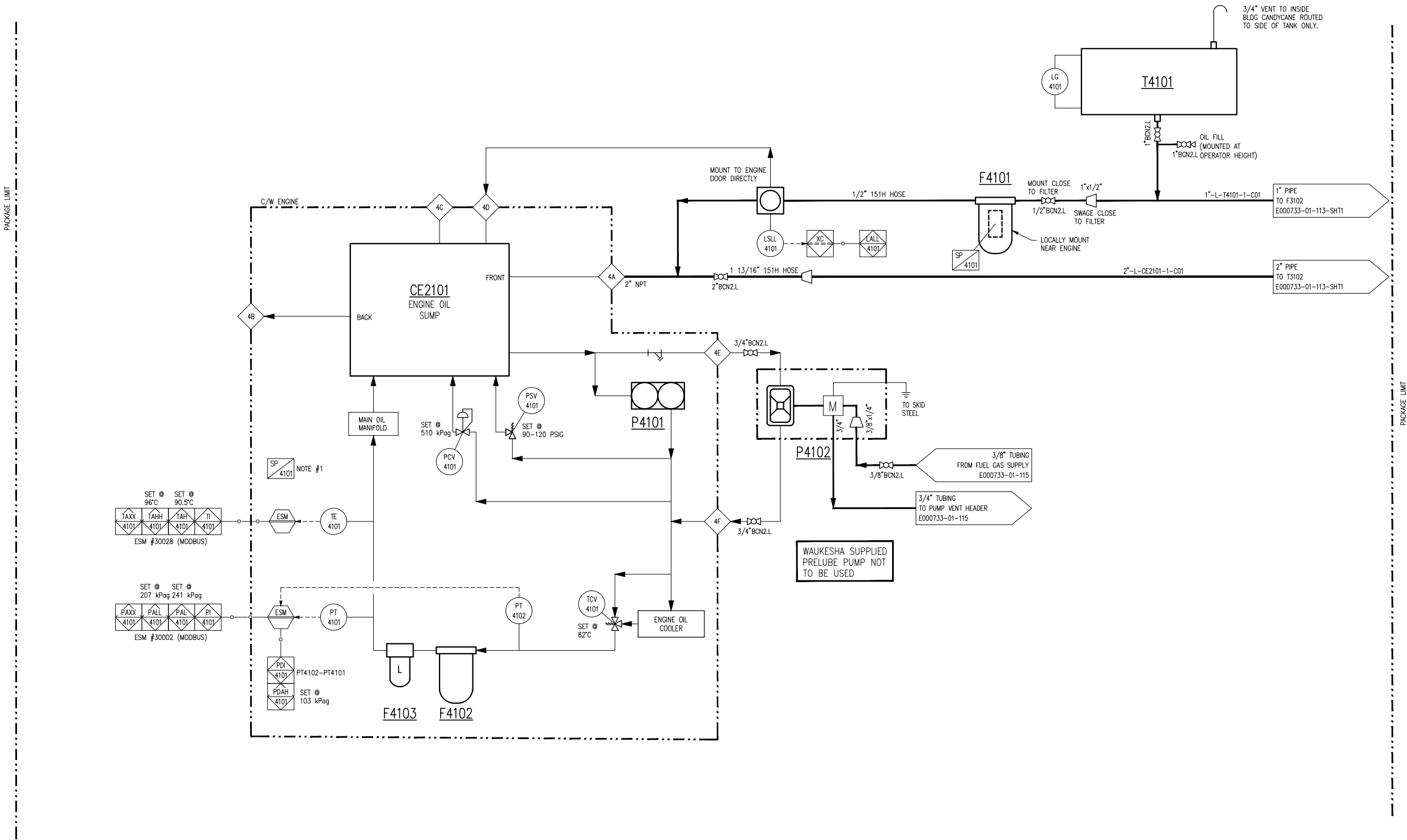
CE2101
ENGINE OIL SUMP
CAPACITY: 190 (719 LITERS) GALLONS

P4101
ENGINE LUBE OIL PUMP
MFG: WAUKESHA
CAPACITY: 140 GPM (530 LPM) @ 1200 RPM

P4102
ENGINE PRE/POST LUBE OIL PUMP
MFG: YAMADA
MODEL: NDP-20BAN
MAX. FLOW: 28 GPM (106 LPM)

F4101
OIL FILTER
MFG: NAPA
MODEL: 4764

T4101
COMPRESSOR FRAME/ENGINE OIL DAY TANK
MFG: EFX (INTEGRAL WITH CRANE RAIL)
CAPACITY: TBA



NOTES:

1. INSTALL WAUKESHA FIRE SLEEVES ON TURBO OIL SUPPLY LINES.

**FINAL
AS BUILT**

NAME: A.HAMMOND DATE: FEB 26/14

REV	DESCRIPTION	DATE	BY	APR
2	AS BUILT - RENTAL	FEB 26/14	AH	PO
1	AS BUILT, FIRE SLEEVES ADDED	NOV 18/13	HBL	GCH
0A	UPDATED PER PRE-FAB MEETING	SEP 25/13	HBL	GCH
0	ISSUED FOR CONSTRUCTION	SEP 16/13	HBL	GCH
A	FOR APPROVAL	JUL 18/13	HBL	GCH

DATE	JUL 18/13	SCALE	NTS
DRAWN BY	H.LIU	CHECKED BY	P.O'CONNOR
PROJECT MANAGER	S.PRITCHARD	PROJECT ENGINEER	P.O'CONNOR
CUST PO			
APEGGA PERMIT No:	P8651	OPER. CODE	

ENERFLEX RENTAL
WAUKESHA L7042GSIE
ARIEL JGK4-3/2 L2C SOUR

ENERFLEX
Calgary, Alberta,
Canada

P&I DIAGRAM
ENGINE LUBE OIL SYSTEM
WAUKESHA L7042GSI

DWG NO E000733-01-114

SHT 1 OF 1

REV 2

PLOT 26 Feb. 2014-9:23am. dhammond THE INFORMATION CONTAINED HEREIN IS THE CONFIDENTIAL PROPERTY OF ENERFLEX, LTD. AND IS NOT FOR PUBLICATION, AND NO PART THEREOF SHALL BE COPIED OR COMMUNICATED TO A THIRD PARTY WITHOUT AUTHORIZATION FROM ENERFLEX, LTD.

FF5101
FUEL GAS FILTER
MFG: EFX FF-8-245-125-00
SIZE: 8.625"(225.2mm) OD FILTER
MAWP:1689 kPag @ 121°C

IMPORTANT
OVERPRESSURE PROTECTION
TO BE PROVIDED OFF-SKID
BY CUSTOMER
ON-SKID SYSTEM RATING
60-90 PSIG @ -20/120°F
(414-620 kPag @ -29/49°C)

STARTER REQUIREMENTS
MODEL: T115B
MAX. INLET P: 90 PSIG (620 kPag)
MAX. Q: 1460 SCFM
MIN. INLET P: 50 PSIG (345 kPag)
MIN. Q: 870 SCFM

1" PIPE C/W BIRDSCREEN
VENT TO OUTSIDE BLDG ABOVE EAVE

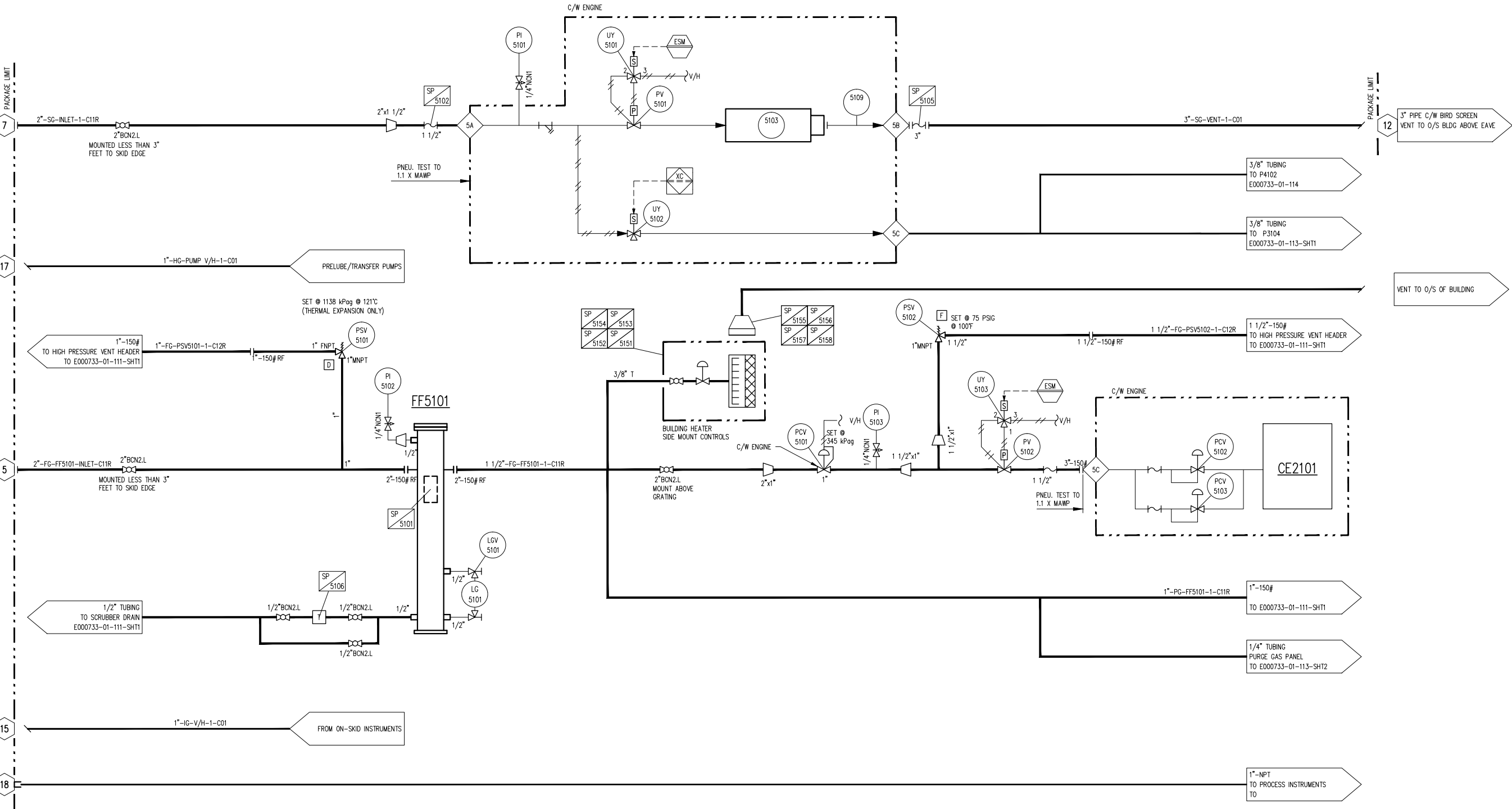
IMPORTANT
OVERPRESSURE PROTECTION
TO BE PROVIDED OFF-SKID
BY CUSTOMER
ON-SKID SYSTEM RATING
150 PSIG @ -20/140°F
(1034 kPag @ -29/60°C)

2"-150# RF THD
FUEL GAS INLET
ENGINE FUEL GAS FLOW
900 BTU/FT³
244 SCFM @ 1200 RPM
134 SCFM @ 700 RPM

1" PIPE C/W BIRDSCREEN
VENT TO O/S BLDG ABOVE EAVE

1"-NPT
INSTRUMENT AIR SUPPLY

NOTE:



**FINAL
AS BUILT**

NAME: A.HAMMOND DATE: FEB 26/14

2	AS BUILT - RENTAL	FEB 26/14	AH	PO	DATE	JUL 18/13	SCALE	NTS
1	AS BUILT	NOV18/13	HBL	GCH	DRAWN BY	H.LIU	CHECKED BY	P.O'CONNOR
0A	UPDATED PER PRE-FAB MEETING	SEP 25/13	HBL	GCH	PROJECT MANAGER	S.PRITCHARD	PROJECT ENGINEER	P.O'CONNOR
0	ISSUED FOR CONSTRUCTION	SEP 16/13	HBL	GCH	CUST PO			
A	FOR APPROVAL	06/18/13	HBL	GCH	APEGGA PERMIT No:	P8651	OPER. CODE	
REV	DESCRIPTION	DATE	BY	APR	WORK ORDER			

ENERFLEX RENTAL
WAUKESHA L7042GSIE
ARIEL JGK4-3/2 L2C SOUR

ENERFLEX
Calgary, Alberta,
Canada

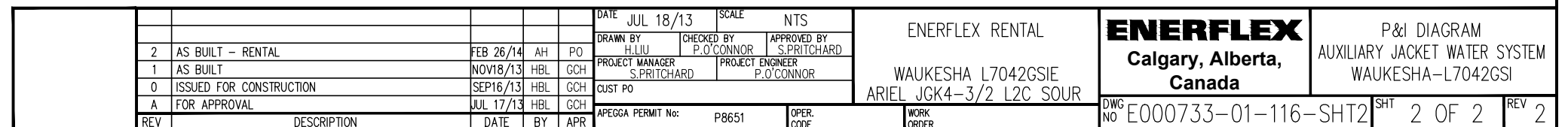
P&I DIAGRAM
START/FUEL GAS SYSTEM
WAUKESHA L7042GSI

DWG NO E000733-01-115

SHT 1 OF 1

REV 2

AJW
ENGINE AUXILIARY WATER COOLER SECTION
MFG: AXH
MAWP: 96 kPag @ 149°C
MDMT: -29°C @ 96 kPag



**FINAL
AS BUILT**

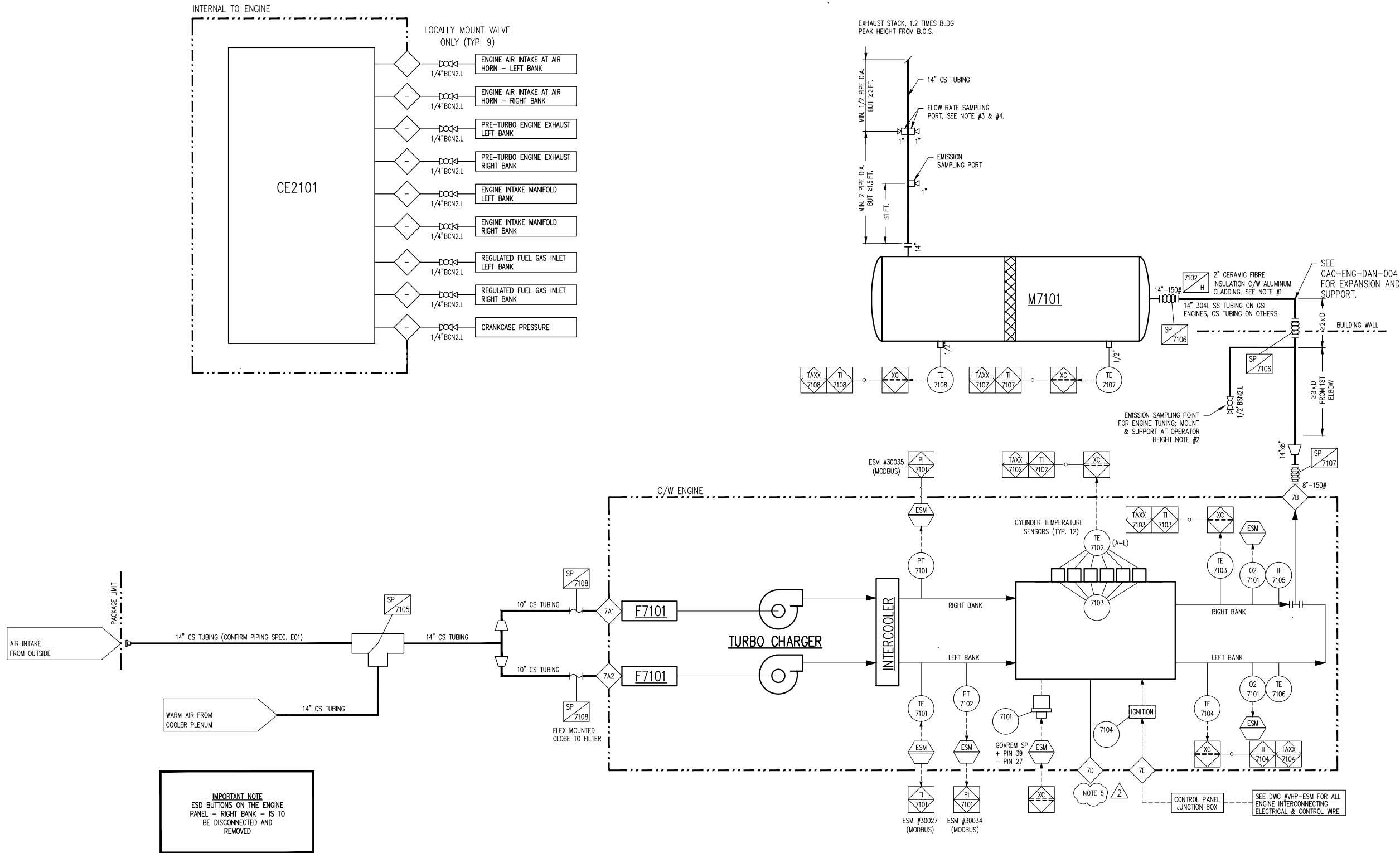
NAME A. HAMMOND DATE FEB 26/2014

PLOT 26 Feb. 2014-9:23am. dhammond@enerflex.com THE INFORMATION CONTAINED HEREIN IS THE CONFIDENTIAL PROPERTY OF ENERFLEX, LTD. AND IS NOT FOR PUBLICATION, AND NO PART THEREOF SHALL BE COPIED OR COMMUNICATED TO A THIRD PARTY WITHOUT AUTHORIZATION FROM ENERFLEX, LTD.

**F7101
AIR FILTER**
MFG: WAUKESHA
QTY: 2

**M7101
SILENCER**

MFG: EMIT CATALYTIC CONVERTER - HOSPITAL GRADE
MODEL: ELH-3550T

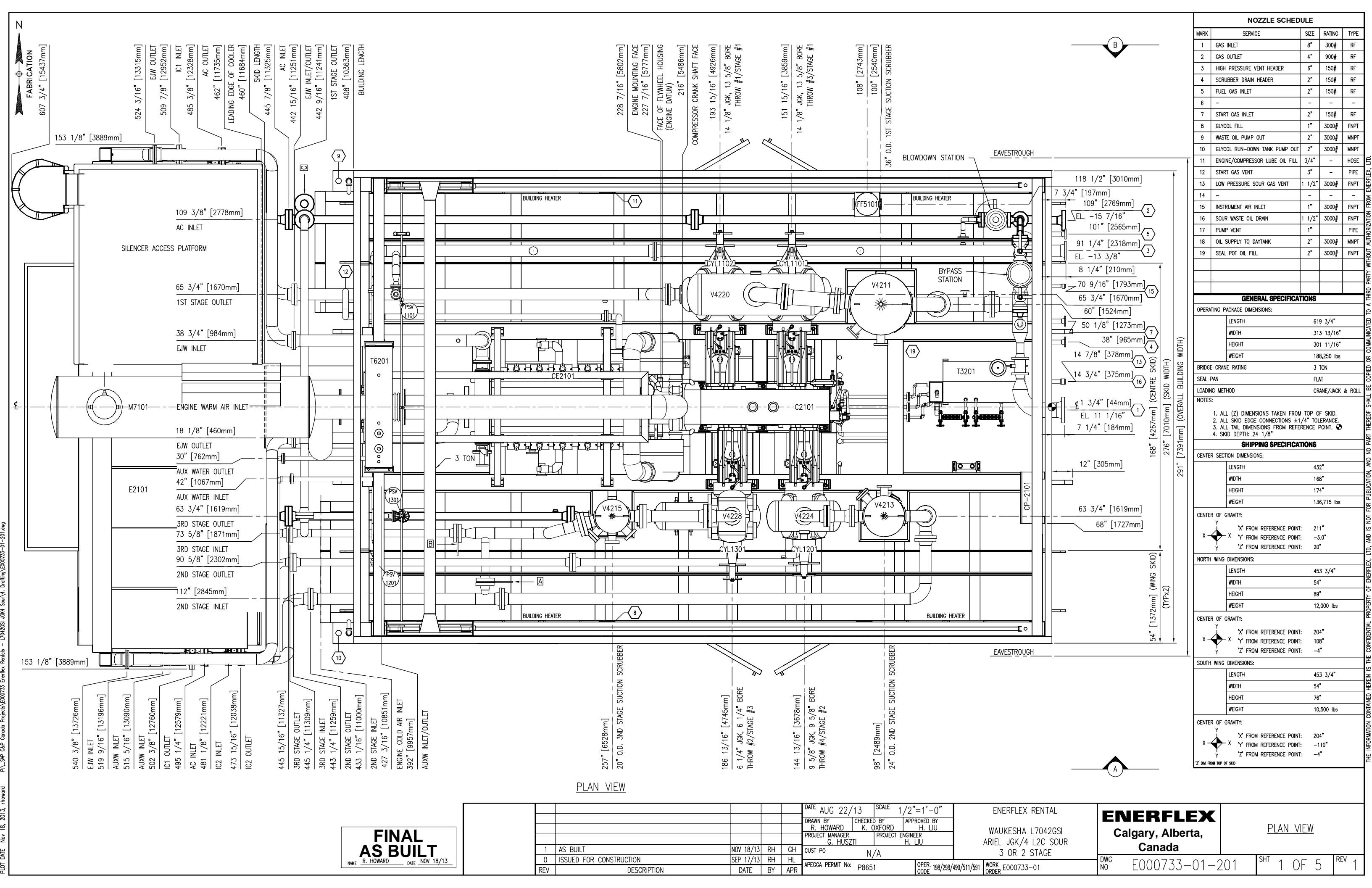


WAUKESHA ESP PARAMETERS
WKI FOR SHOP TEST RUN = 95
WKI FOR FIELD CONDITION = ____ (GAS ANALYSIS REQUIRED)
LOAD INERTIA = ____ lbf/in2
NOx = ____ g/BHP-HR

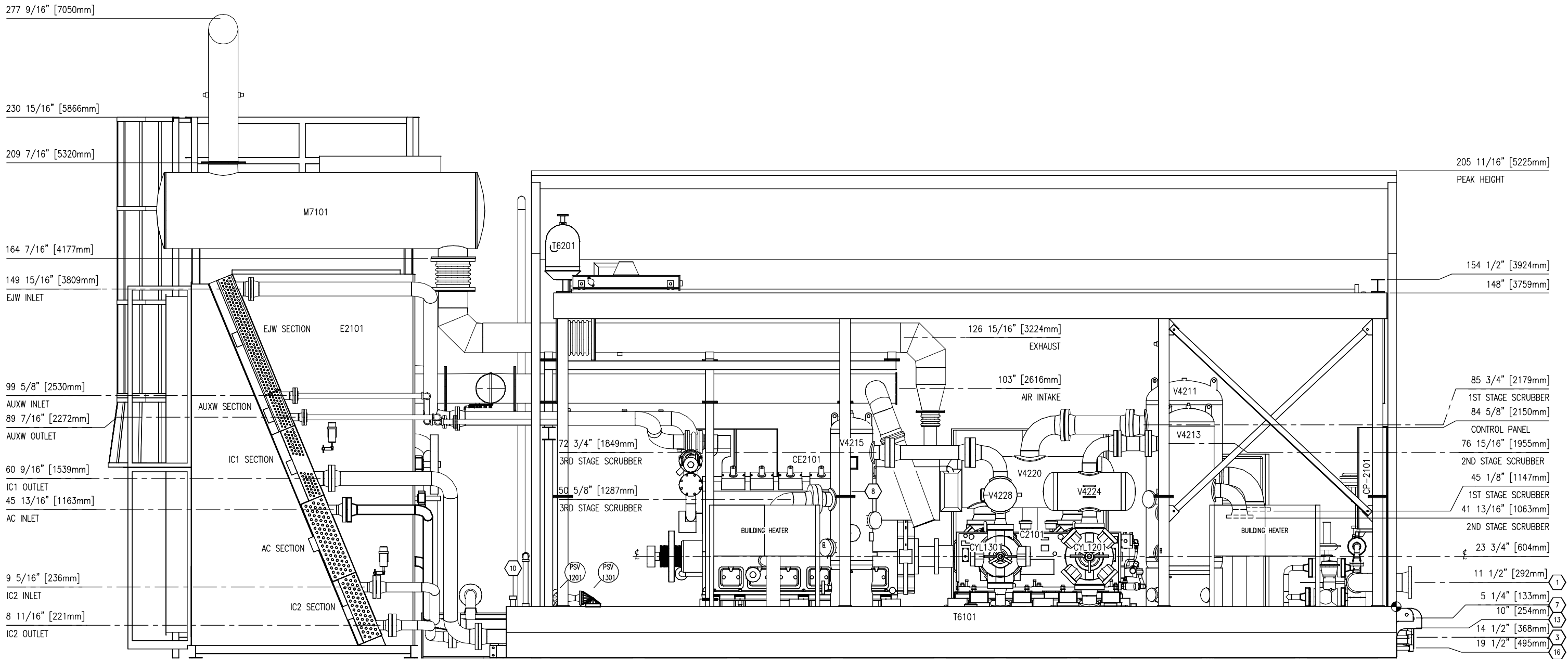
- NOTE:**
1. INSULATION FROM ENGINE EXHAUST OUTLET TO OUTSIDE OF BUILDING WALL.
 2. SAMPLING PORT TUBINGS AND VALVES SHALL BE POST MOUNTED.
 3. TWO FLOW RATE SAMPLING PORTS SHALL BE PERPENDICULAR TO EACH OTHER.
 4. EMISSION SAMPLE POINTS CONFIRM TO USA/CANADIAN REQUIREMENT.
 5. CLOSED CRANKCASE. LOCK OPEN VALVE ON VENT LINE.

**FINAL
AS BUILT**
NAME: A.HAMMOND DATE: FEB 26/14

	3	AS BUILT – RENTAL	FEB 26/14	AH	PO	DATE	JUL 18/13	SCALE	NTS	ENERFLEX RENTAL WAUKESHA L7042GSIE ARIEL JGK4-3/2 L2C SOUR	ENERFLEX Calgary, Alberta, Canada	P & I DIAGRAM AIR / EXHAUST SYSTEMS WAUKESHA L7042GSI			
	2	ISSUED FOR CONSTRUCTION – RENTAL (CLOUDED)	FEB 10/14	AT	PO	DRAWN BY	H.LIU	CHECKED BY	P.O'CONNOR				APPROVED BY	S.PRITCHARD	
	1	AS BUILT	NOV 18/13	HBL	GCH	PROJECT MANAGER		PROJECT ENGINEER							
	0A	ADDED CATALYST TE-7107/8, UPDATED TURBO TE-7103,4,5,6	SEP 23/13	HBL	GCH	S.PRITCHARD		P.O'CONNOR							
	0	ISSUED FOR CONSTRUCTION	SEP 16/13	HBL	GCH	CUST PO									
	A	FOR APPROVAL	JUL 18/13	HBL	GCH										
REV		DESCRIPTION	DATE	BY	APR	APEGGA PERMIT No: P8651		OPER. CODE	WORK ORDER	DWG NO	E000733-01-117	SHT	1 OF 1	REV	3



P:_SAP C&P Canada Projects\E000733 Enerflex Rentals - L7042GSI JGK 4 Sour V. Drafting\E000733-01-201.dwg
PLOT DATE Nov 18, 2013, Howard



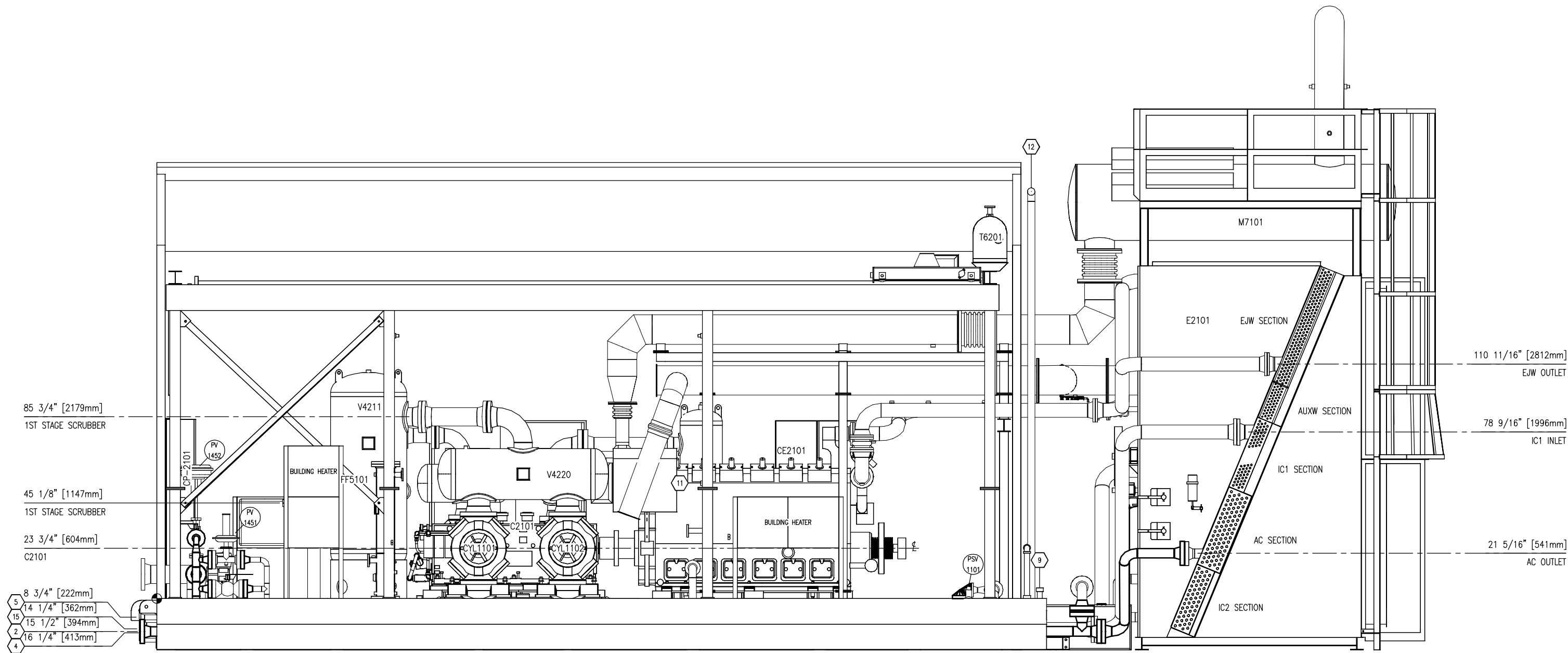
ELEVATION VIEW A-A

**FINAL
AS BUILT**
NAME R. HOWARD DATE NOV 18/13

						DATE	AUG 22/13	SCALE	1/2"=1'-0"	ENERFLEX RENTAL WAUKESHA L7042GSI ARIEL JGK/4 L2C SOUR 3 OR 2 STAGE			ENERFLEX Calgary, Alberta, Canada		ELEVATION VIEW A-A				
						DRAWN BY	R. HOWARD	CHECKED BY	K. OXFORD									APPROVED BY	H. LIU
						PROJECT MANAGER		PROJECT ENGINEER											
						G. HUSZTI		H. LIU											
1	AS BUILT		NOV 18/13	RH	GH	CUST PO	N/A												
0	ISSUED FOR CONSTRUCTION		SEP 17/13	RH	HL	APEGGA PERMIT No: P8651			OPER. CODE	198/298/490/511/591	WORK ORDER	E000733-01	DWG NO	E000733-01-201		SHT	2 OF 5	REV	1
REV	DESCRIPTION		DATE	BY	APR														

THE INFORMATION CONTAINED HEREIN IS THE CONFIDENTIAL PROPERTY OF ENERFLEX, LTD. AND IS NOT FOR PUBLICATION, AND NO PART THEREOF SHALL BE COPIED OR COMMUNICATED TO A THIRD PARTY WITHOUT AUTHORIZATION FROM ENERFLEX, LTD.

P:_SAP C&P Canada Projects\E000733 Enerflex Rentals - L7042GSI JGK 4 Sour V. Drafting\E000733-01-201.dwg
PLOT DATE Nov 18, 2013, Howard



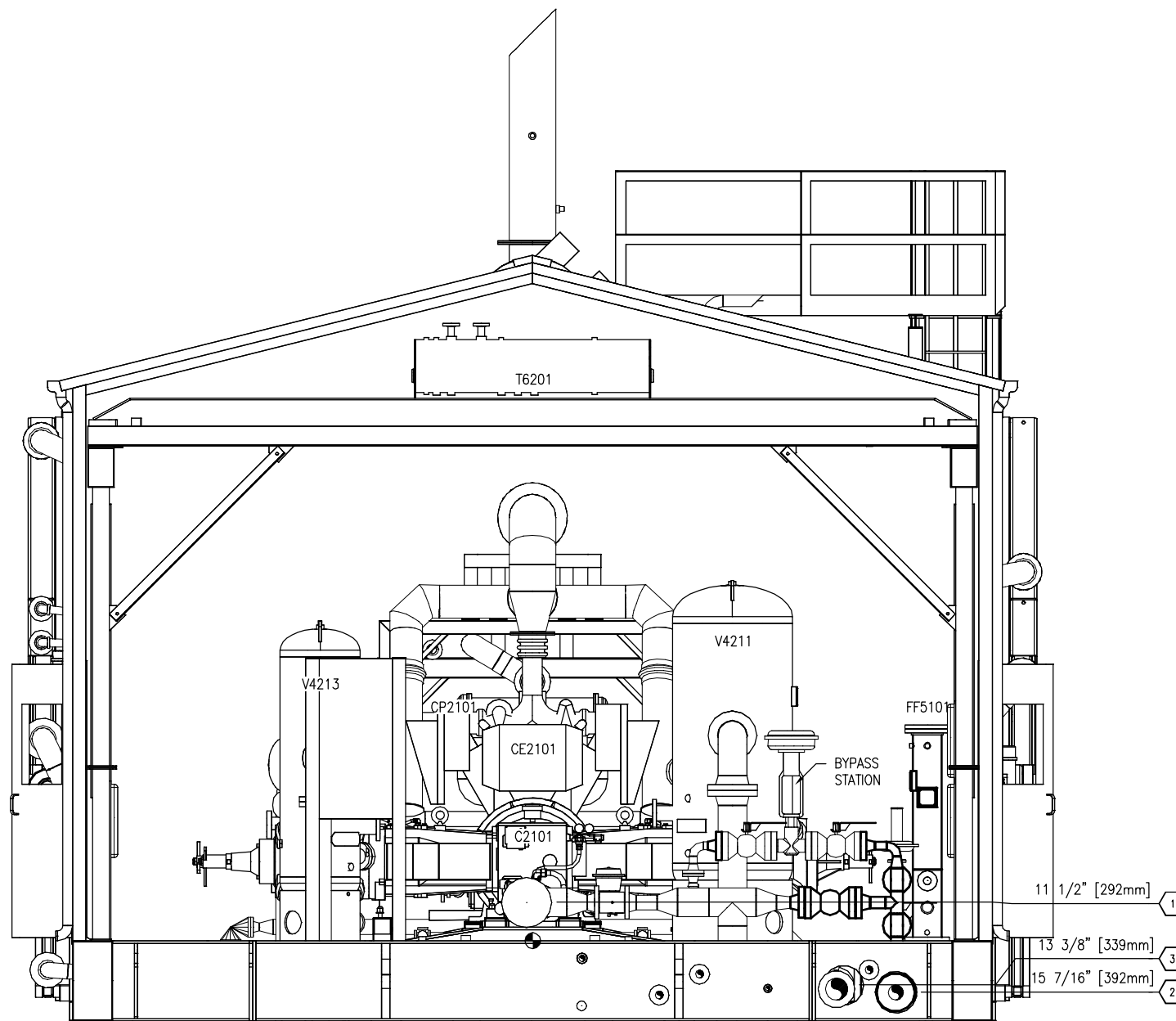
ELEVATION VIEW B-B

NOTE:
ALL TAIL DIMENSIONS ARE
TAKEN FROM REFERENCE
POINT AT TOP OF SKID

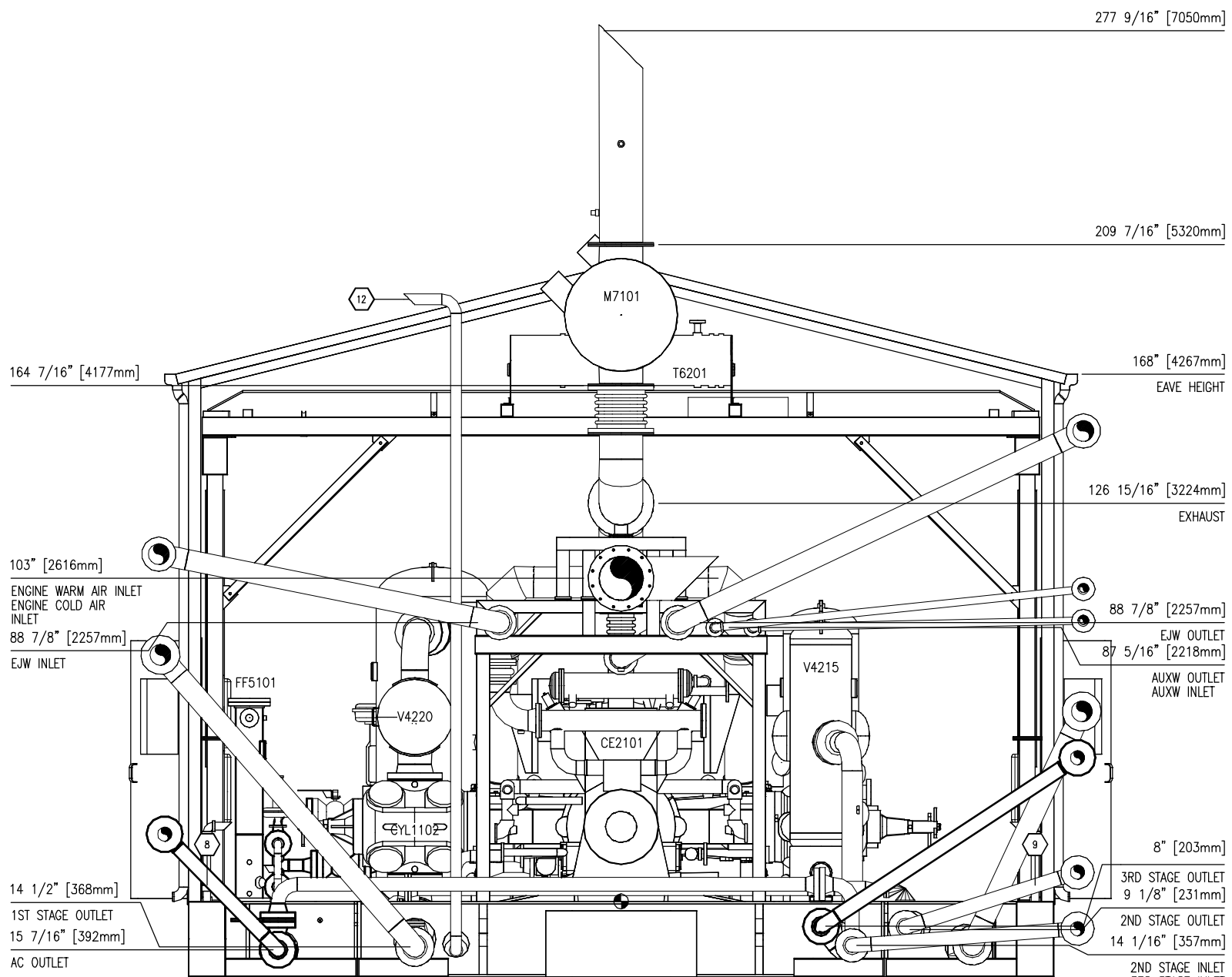
				DATE	AUG 22/13		SCALE	1/2"=1'-0"		ENERFLEX RENTAL WAUKESHA L7042GSI ARIEL JGK/4 L2C SOUR 3 OR 2 STAGE		ENERFLEX Calgary, Alberta, Canada		ELEVATION VIEW B-B					
				DRAWN BY	R. HOWARD		CHECKED BY	K. OXFORD									APPROVED BY	H. LIU	
				PROJECT MANAGER			PROJECT ENGINEER												
				G. HUSZTI			H. LIU												
1	AS BUILT			NOV 18/13	RH	GH	CUST PO		N/A										
0	ISSUED FOR CONSTRUCTION			SEP 17/13	RH	HL													
REV	DESCRIPTION			DATE	BY	APR	APEGGA PERMIT No: P8651		OPER. CODE	198/298/490/511/591		WORK ORDER	E000733-01		DWG NO	E000733-01-201			
													SHT	3 OF 5		REV	1		

**FINAL
AS BUILT**
NAME R. HOWARD DATE NOV 18/13

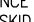
THE INFORMATION CONTAINED HEREIN IS THE CONFIDENTIAL PROPERTY OF ENERFLEX, LTD. AND IS NOT FOR PUBLICATION, AND NO PART THEREOF SHALL BE COPIED OR COMMUNICATED TO A THIRD PARTY WITHOUT AUTHORIZATION FROM ENERFLEX, LTD.



DATUM END VIEW



COOLER END VIEW
(AC NOT SHOWN FOR CLARITY)

NOTE:
ALL TAIL DIMENSIONS ARE
TAKEN FROM REFERENCE
POINT  AT TOP OF SKID

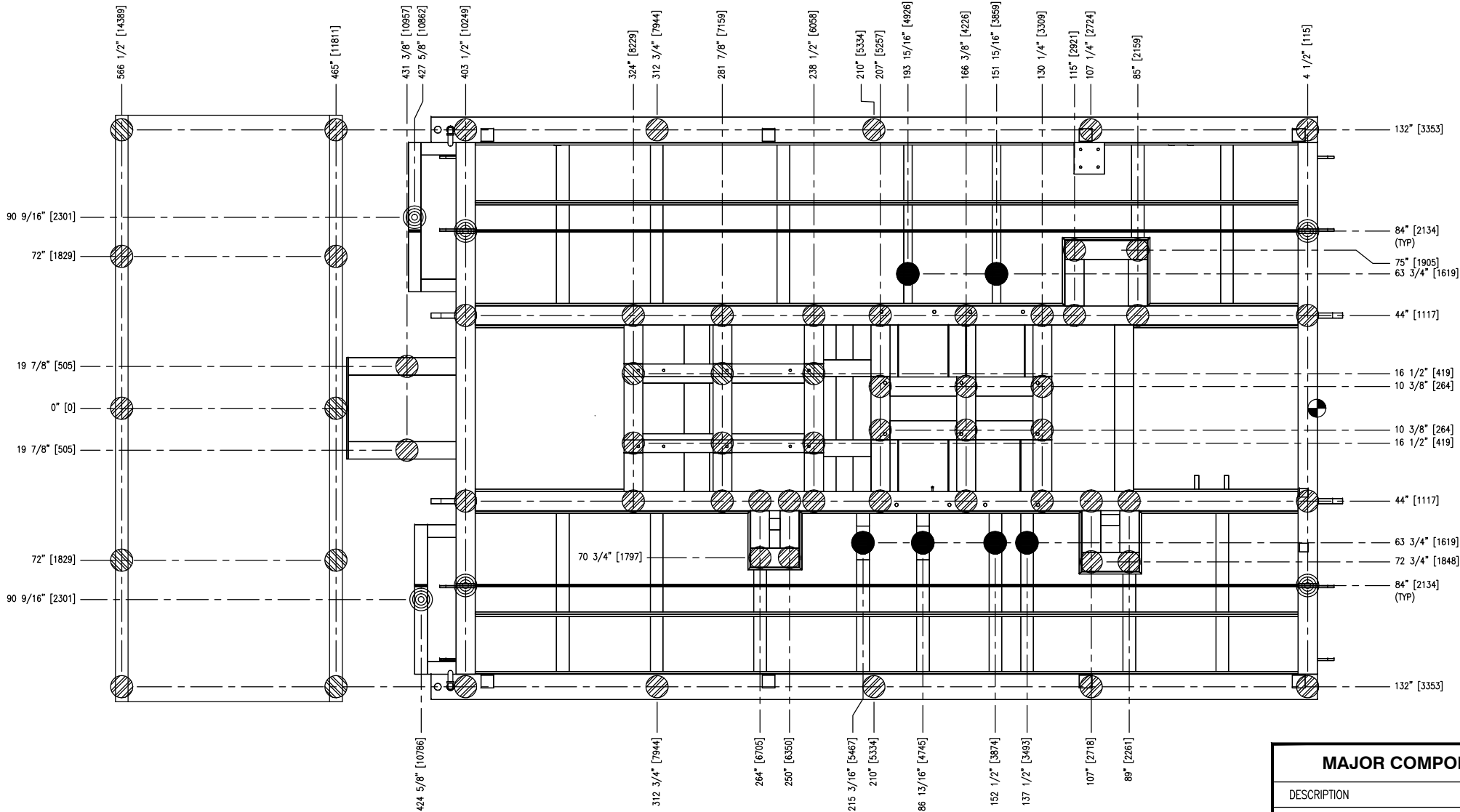
						DATE	AUG 22/13	SCALE	1/2"=1'-0"	ENERFLEX RENTAL WAUKESHA L7042GSI ARIEL JGK/4 L2C SOUR 3 OR 2 STAGE			ENERFLEX Calgary, Alberta, Canada		END VIEWS				
						DRAWN BY	R. HOWARD	CHECKED BY	K. OXFORD									APPROVED BY	H. LIU
						PROJECT MANAGER	G. HUSZTI	PROJECT ENGINEER	H. LIU										
						CUST PO	N/A												
1	AS BUILT		NOV 18/13	RH	GH														
0	ISSUED FOR CONSTRUCTION		SEP 17/13	RH	HL														
REV	DESCRIPTION		DATE	BY	APR	APEGGA PERMIT No: P8651			OPER. CODE 198/298/490/511/591		WORK ORDER	E000733-01	DWG NO E000733-01-201		SHT 4 OF 5	REV 1			

ISSUED FOR
CONSTRUCTION
NAME R. HOWARD DATE NOV 18/13

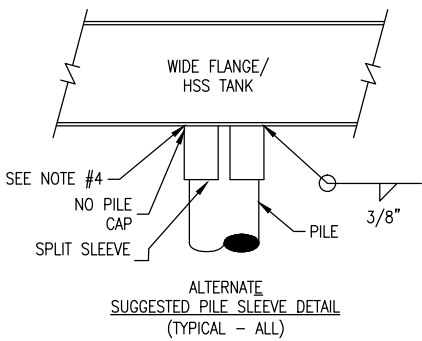
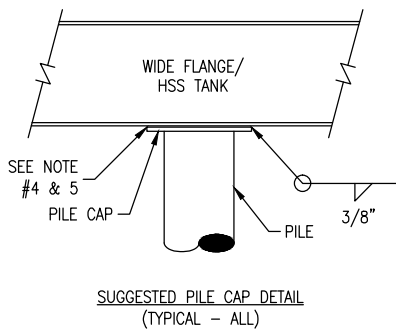
PLOT DATE Nov 18, 2013, Howard
F:_SAP C&P Canada Projects\E000733 Enerflex Rentals - L7042GSI JGK/4 Sour V. Drafting\E000733-01-201.dwg

THE INFORMATION CONTAINED HEREIN IS THE CONFIDENTIAL PROPERTY OF ENERFLEX, LTD. AND IS NOT FOR PUBLICATION, AND NO PART THEREOF SHALL BE COPIED OR COMMUNICATED TO A THIRD PARTY WITHOUT AUTHORIZATION FROM ENERFLEX, LTD.

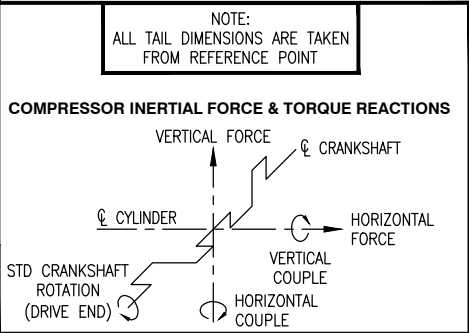
PLOT DATE: Nov 19, 2013, rhoward
P:_SAP_C&P_Canada Projects\E000733 Enerflex Rentals - L7042GSI JGK4 Sour A Drilling\E000733-01-301.dwg



PLAN VIEW



FRAME: JGK/4 MAX. RPM: 1200						
THROW #	1	2	3	4	5	6
CYL. BORE (in.)	13 5/8	6 1/4	13 5/8	9 5/8	—	—
UNBALANCED FORCES & COUPLES						
HORIZONTAL			PRIMARY	SECONDARY		
FORCE, KIP AT MAX. lmb: 2.50 lbs			0.398	0.112		
FORCE, KIP (ACTUAL WEIGHTS)			0.287	0.065		
COUPLE, KIP-ft			20.555	0.070		
VERTICAL			PRIMARY	SECONDARY		
FORCE, KIP			0.057	—		
COUPLE, KIP-ft			17.505	—		
CROSSHEAD GUIDE DEFLECTION						
THROW 1	THROW 2	THROW 3	THROW 4	THROW 5	THROW 6	
0.020	0.015	0.020	0.018	—	—	



FOR
REFERENCE
ONLY
NAME: R. HOWARD DATE: NOV 15/13

REV	DESCRIPTION	DATE	BY	APR
A	ISSUED FOR REFERENCE ONLY	NOV 15/13	RH	HL

MAJOR COMPONENT WEIGHTS	
DESCRIPTION	WEIGHT (LBS.)
COMPRESSOR FRAME:	8,300
ENGINE: (c/w FLUIDS)	20,550
COOLER: (DRY)	32,500
SUCTION SCRUBBER	4,247
INTERSTAGE #1 SCRUBBER:	2,319
INTERSTAGE #2 SCRUBBER:	2,259
THROW #1 CYLINDERS & BOTTLES:	3,373
THROW #2 CYLINDER & BOTTLES:	5,273
THROW #3 CYLINDER & BOTTLES:	3,373
THROW #4 CYLINDER & BOTTLES:	3,328
BRIDGE CRANE:	1,040
BRIDGE CRANE RAILS:	7,035
SKID BASE: (w/o CONCRETE)	33,500
SKID BASE: (w/ CONCRETE)	37,427
BUILDING:	TBA
MISC. STEEL:	1,100
TOTAL PACKAGE: (7% S.F.)	204,868
TOTAL PACKAGE: (LESS COOLER)	172,368

ICON	DESCRIPTION	QTY
●	SUPPORT POINT FOR DISCHARGE BOTTLE WEDGE SUPPORTS.	
◎	SUPPORT POINT FOR SPLIT SKID JOINT (ASSIST FIELD ASS'Y)	
⊗	GENERAL SUPPORT POINT	
THESE SUPPORT POINTS ARE NOT NECESSARILY A PILE LOCATION		

ENERFLEX RENTAL WAUKESHA L7042GSI ARIEL JGK/4 L2C SOUR 3 OR 2 STAGE		ENERFLEX Calgary, Alberta, Canada		SUGGESTED SUPPORT LOCATION (800 BHP & ABOVE)	
DWG NO	E000733-351	SHT	1	REV	0

PLEASE READ CAREFULLY

USE OF THIS DIAGRAM INDICATES OWNER'S/OPERATOR'S ACCEPTANCE OF THE FOLLOWING PROVISIONS NOT WITHSTANDING ANY OTHER AGREEMENT OR PROVISION BETWEEN ENERFLEX LTD. ("EFX") AND THE OWNER/OPERATER ("O/O").

1. THE DESIGN OF THE FOUNDATION FOR THIS COMPRESSOR PACKAGE IS NOT IN THE SCOPE OF SUPPLY BY EFX. AS SUCH, THE DESIGN AND ADEQUACY OF THE FOUNDATION IS ENTIRELY THE RESPONSIBILITY OF THE O/O AND/OR ITS ENGINEERING FIRM AND THEIR REPRESENTATIVES.

2. THE RECOMMENDATIONS SHOWN ON THE DIAGRAM AT LEFT ARE BASED UPON ACTUAL FIELD EXPERIENCE ONLY. THESE FOUNDATION RECOMMENDATIONS HAVE NOT BEEN SPECIFICALLY DESIGNED BY A QUALIFIED CIVIL ENGINEER FOR THIS PROJECT. EFX AND ITS REPRESENTATIVES SHALL NOT BE HELD LIABLE FOR ANY COSTS INCURRED RESULTING FROM THE USE OR MISUSE OF THE RECOMMENDATIONS.

3. THIS DRAWING INDICATES THE MINIMUM SUGGESTED NUMBER OF SUPPORT POINTS. THE ACTUAL NUMBER AND LOCATION REQUIRED MAY BE MORE, DEPENDING ON SOIL CONDITIONS, PILE DEPTH OF REFUSAL, FIELD EXPERIENCE, ENGINEERING OPINION, LOCAL CODES OR LAWS, ETC.. EFX DOES NOT AND CANNOT WARRANT THIS SUGGESTED DESIGN AND IT IS STRONGLY RECOMMENDED THAT A CIVIL ENGINEER FAMILIAR WITH PACKAGED RECIPROCATING COMPRESSORS OF THIS HP MAGNITUDE BE CONSULTED TO DESIGN THE FOUNDATION FOR THIS COMPRESSOR PACKAGE. EFX IS NOT AN EXPERT IN FOUNDATION DESIGN, IS NOT BEING PAID TO DESIGN THE FOUNDATION AND, IN CONSIDERATION OF EFX EXPENDING THE TIME AND RESOURCES ON THIS DIAGRAM TO ASSIST THE O/O, THE O/O HEREBY RELEASES EFX, AND THEIR REPRESENTATIVES FROM ANY LIABILITY, OF ANY NATURE, WHATSOEVER, WITH RESPECT TO THE ADEQUACY, USEFULNESS, OR FITNESS FOR PURPOSE, OF THE DIAGRAM OR RESULTING FOUNDATION.

4. ALL PILE CAPS/SLEEVES MUST BE SHIMMED LEVEL AND WELDED TO THE SKID WITH CONTINUOUS WELDMENTS USING GOOD INDUSTRY WELDING PRACTICES. STITCH WELDING IS NOT ACCEPTABLE. STEP SHIMMING IS NOT ACCEPTABLE. EFX DOES NOT WARRANT VIBRATION ISSUES RELATING TO POOR PILE TO SKID CONNECTIONS.

5. AS A MINIMUM, (3) SIDES OF THE PILE CAP SHALL BE WELDED TO THE SKID MEMBER.

6. PACKAGES INCORPORATING ENVIRONMENTAL PANS (DRIP) IN THE WINGS WILL RESTRICT ACCESS TO SUPPORTS BELOW. IT WILL BE NECESSARY TO CUT THE SEAL PAN TO GAIN ACCESS TO THESE AREAS FOR WELDING PURPOSES.

7. A RECIPROCATING COMPRESSOR IS CAPABLE OF PRODUCING VERY HIGH HORIZONTAL COUPLES ABOUT THE CENTERLINE OF THE CRANKCASE. SPECIAL ATTENTION MUST BE GIVEN TO ALL TWO THROW AND HIGH ROD LOAD RATED FRAMES. CAREFUL CONSIDERATION MUST BE GIVEN TO THE LOCATION OF SUPPORT BELOW THE CYLINDER CROSSHEAD AREA OF THE SKID. A SINGLE POINT OF SUPPORT BELOW THE CENTERLINE OF EACH THROW IS NOT SUFFICIENT. SUPPORT SHOULD STRADDLE EACH THROW.

8. IT IS ALWAYS RECOMMENDED TO PERFORM A GEO-TECHNICAL INVESTIGATION OF THE SUB-SURFACE CONDITIONS OF THE SOIL AT THE INSTALLATION SITE.

9. IT IS THE END USER'S RESPONSIBILITY TO HAVE THE PILES PLACED AS RECOMMENDED BY A QUALIFIED CIVIL ENGINEER.

10. THIS COMPRESSOR PACKAGE HAS BEEN LEVELED VIA TRANSIT INSTRUMENTS, AND READINGS DOCUMENTED ON DWG. NO. NNNNN-351, SHEET 2. TO MINIMIZE THE RISK OF EQUIPMENT FIELD ALIGNMENT CHALLENGES, IT IS RECOMMENDED THAT THESE ALIGNMENT READINGS BE REFERENCED WHEN SETTING THE PACKAGE ONTO THE FOUNDATION.

11. SKID DEFLECTION CAN CAUSE EQUIPMENT ALIGNMENT PROBLEMS, PIPE STRAIN AND VIBRATION. ONCE EQUIPMENT HAS BEEN PLACED ON THE FOUNDATION, IT MUST BE CHECKED FOR ALIGNMENT AND PIPE STRAIN. ALIGN AS REQUIRED TO MEET ROTATING EQUIPMENT MANUFACTURER'S SPECIFICATIONS.

12. REFERENCE THE GENERAL ARRANGEMENT DRAWING FOR LOCATION OF MAJOR EQUIPMENT.

THE INFORMATION CONTAINED HEREIN IS THE CONFIDENTIAL PROPERTY OF ENERFLEX, LTD. AND IS NOT FOR PUBLICATION, AND NO PART THEREOF SHALL BE COPIED OR COMMUNICATED TO A THIRD PARTY WITHOUT AUTHORIZATION FROM ENERFLEX, LTD.